
MIRROR RELOCATION BRACKETS

(1997-2006 WRANGLER TJ)

INSTALLATION INSTRUCTIONS

CONTENTS

- (1) LH Bracket
- (1) RH Bracket
- (2) Spacers
- (2) Large Washers
- (2) Small Washers

TOOLS REQUIRED

- T40 Torx Bit
- T27 Torx Bit
- 17MM Socket and Ratchet

SKU # J133447

STEP 1



Locate and remove the (2) T40 Bolts on the windshield mounting bracket.

STEP 2



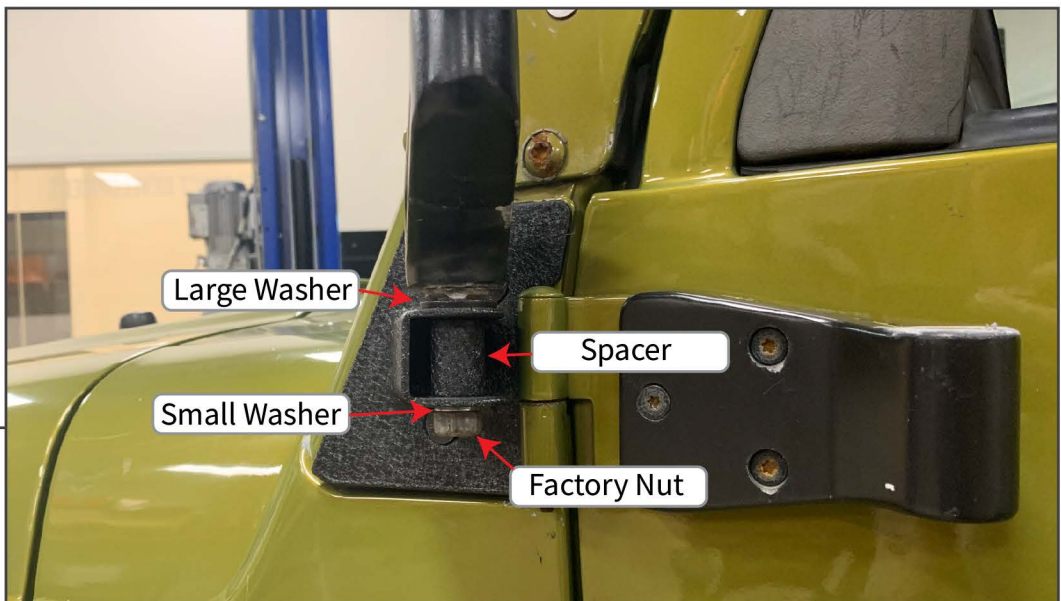
Install the relocation bracket using the factory hardware.

STEP 3



Using a 17mm socket, remove the factory mirror nut and remove the mirror from the door bracket.

STEP 4



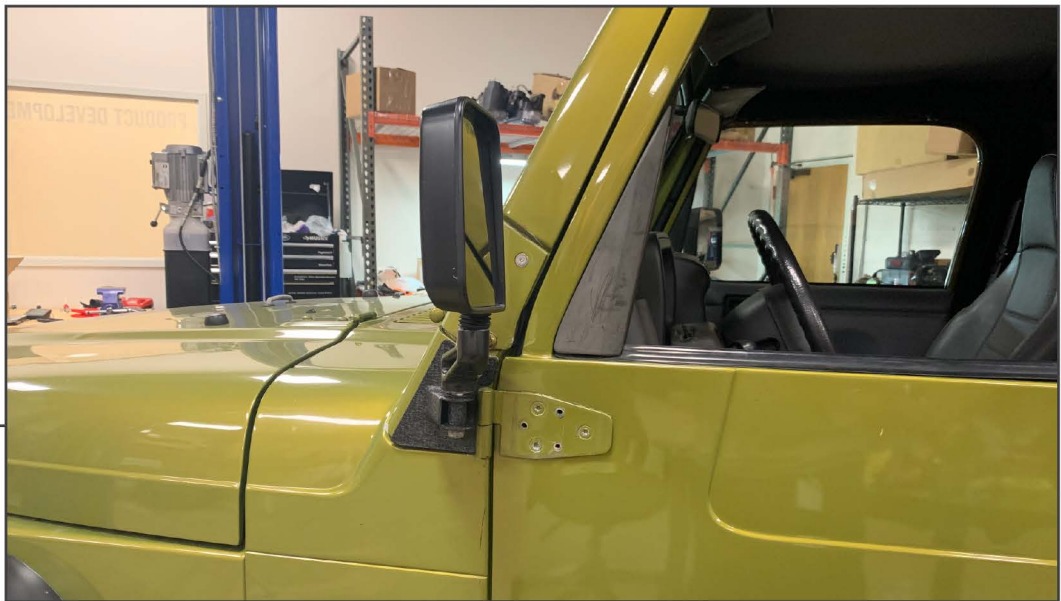
Install the mirror on the relocation bracket using (1) Large Washer, (1) Spacer, and (1) Small Washer. Reuse the factory nut.

STEP 5



Using a T27 Torx bit, remove the factory door bracket.

STEP 6



Installation is now complete.