



---

# SPARE TIRE EXTENSION BRACKET

(1997-2006 WRANGLER TJ)

(2007-2018 WRANGLER JK)

---

## INSTALLATION INSTRUCTIONS

### CONTENTS

---

- (1) Extension Bracket
- (3) 1/2"-20 x 1.5" Bolts
- (3) 1/2"-20 Lock Nuts

### TOOLS REQUIRED

---

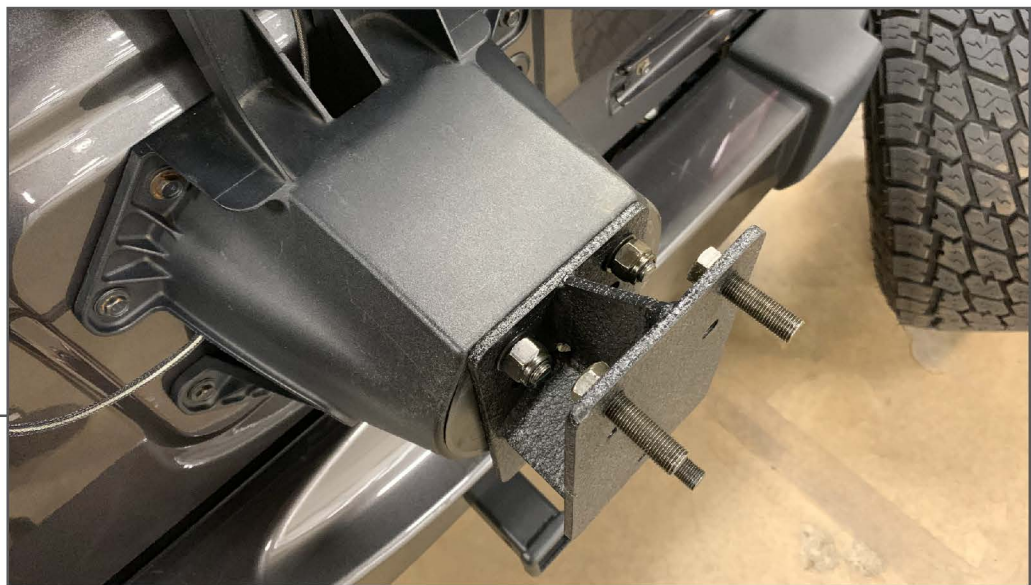
- 19mm or Lug Nut Socket
- 18mm, 19mm Wrench
- Breaker Bar
- Torque Wrench

---

**STEP 1**

Using your lug nut socket, removed the (3) lug nuts securing the tire to the vehicle. Remove the spare tire from the vehicle.

---

**STEP 2**

Match the bracket to the vehicles correct lug nut pattern. The top set of holes are for JK. Secure the extension bracket to the vehicle using the supplied lock nuts. Torque nuts to 40-80 ft-lbs.



---

**STEP 3**

Secure the wheel to the vehicle using the original lug nuts. Torque the wheel to 40-80 ft-lbs.

Installation is now complete.