



SOLID STEEL REAR BUMPER

(2018-2025+ WRANGLER JL)

INSTALLATION INSTRUCTIONS

CONTENTS

- (1) Bumper
- (1) Hitch Reinforcement Bracket
- (2) 3/4" D-Rings
- (2) D-Ring Isolators
- (1) License Plate Light
- (2) LED Lights
- (2) LED Light Housings
- (4) LED Light Mounting Brackets
- (1) LED Light Wiring Harness
- (1) Frame Rail Nut Bracket
- (1) License Plate Bracket
- (2) License Plate Hole Plugs
- (5) Zip Ties
- (1) 4mm Allen Key
- (6) M14 x 1.50 x 40mm Bolts
- (6) M14 Lock Washers
- (6) M14 Flat Washers
- (4) M12 x 1.75 x 110mm Bolts
- (4) M12 Lock Washers
- (8) M12 Flat Washers
- (4) M12 Nuts
- (2) M8 x 1.25 x 25mm Bolts
- (4) M8 Flat Washers
- (2) M8 Lock Nuts
- (20) M6 x 1.00 x 30mm Allen Bolts
- (20) M6 Flat Washers
- (20) M6 Lock Nuts
- (4) M6 x 1.00 x 20mm Bolts
- (4) M6 Flange Nuts

TOOLS REQUIRED

- 8mm, 10mm, 13mm, 14mm, 16mm, 18mm, 19mm, 21mm Sockets/Wrenches
- Ratchet
- Phillips Screwdriver
- Panel Removal Tool

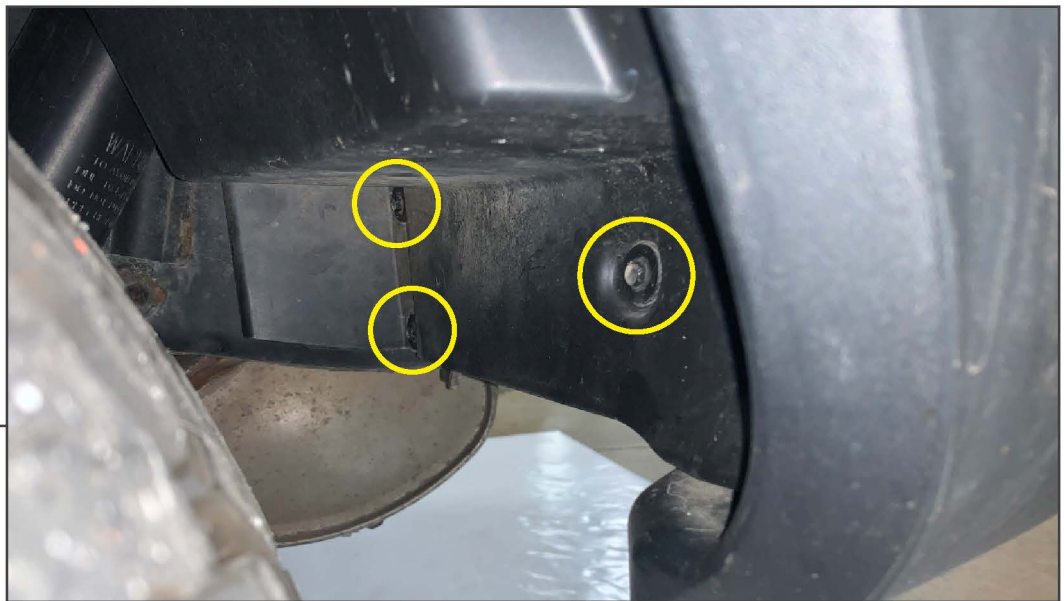
SKU # J132473

STEP 1



Remove the spare tire camera cover, then remove the spare tire from the vehicle.

STEP 2

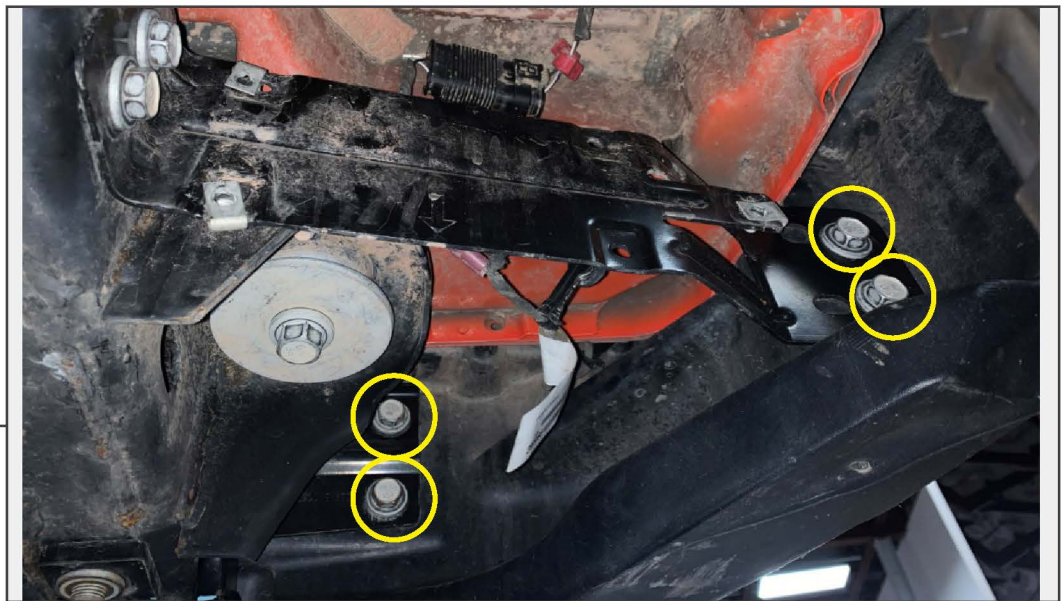


Behind the rear tire, remove (3) 8mm screws holding the bumper plastic liner in place. Once all screws are removed, pull the liner out and set aside. Repeat this procedure to the opposite side.



STEP 3

With the bumper liner removed, use a panel removal tool to dislodge the connector from the vehicle. Unplug the harness from the connector.



STEP 4

Remove (4) 16mm bolts from the backside of the bumper. Repeat this procedure for the opposite side. Remove the bumper from the vehicle.



STEP 5

Remove (2) 16mm bolts from the original outer bumper bracket. Remove the bracket from the vehicle. Repeat this procedure to the opposite side.



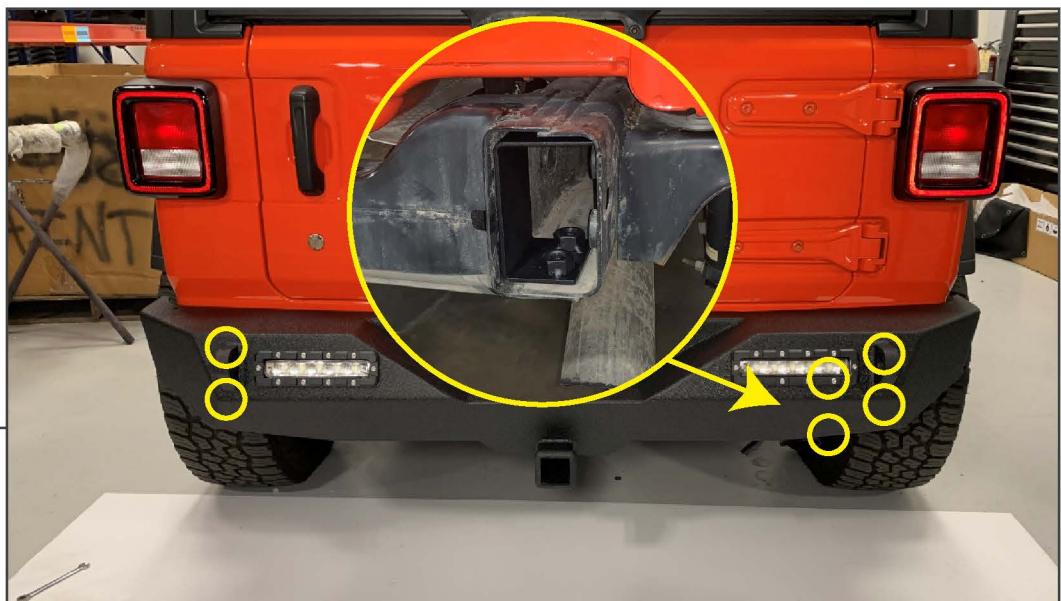
STEP 6

Remove (4) 21mm bolts to remove the inner bumper bracket and tow hook on the driver side. Remove (2) 21mm bolts to remove the inner bumper bracket on the passenger side.



STEP 7

Install the (2) LED light mounting brackets to the LED light using (2) Phillips screws. Install the light into the bumper by installing (10) M6 x 20mm Allen bolts, (10) M6 flat washers, and (10) M10 lock nuts. Pass the bolts through the light surround, LED light mounting bracket, and bumper.



STEP 8

Place the frame rail bracket inside the passenger side frame rail on the vehicle. Align the bumper up to the vehicle and install (6) M14x1.50 x 40mm bolts, (6) M14 lock washers, and (6) M14 flat washers to secure the bumper to the vehicle.

Note: To re-use original tow hook, (2) original bolts must be re-used.

STEP 9



Using (1) receiver hitch reinforcement bracket, (4) M12 x 1.75 x 110mm bolts, (4) M12 lock washers, (8) M12 flat washers, and (4) M12 nuts, secure the hitch portion of the bumper to the vehicle.

STEP 10



Using (2) M8 x 1.25 x 25mm bolts, (4) M8 flat washers, and (2) M8 locking nuts, secure the license plate bracket to the top of the bumper.

STEP 11



Secure the vehicle license plate to the license plate bracket using (4) M6 x 1.00 x 20mm bolts and (4) M6 flange nuts. Secure the license plate lights to the bracket using pre-installed light hardware.

Note: Ensure light is pointing towards the license plate.

STEP 12



Neatly route the wiring harness towards the original vehicle license plate light connector. Secure the wiring harness out of the way of any moving components using the provided (5) zip ties.



STEP 13

Route the bumper LED light harness towards the front of the vehicle. Attach the power (Red) and ground (Black) leads to the designated terminals on the battery. Route the switch to the interior through a suitable firewall grommet.

Installation is now complete.