



EXTREME HD ADVENTURE DOORS - REAR DOORS

(2018-2025+ WRANGLER JL)

INSTALLATION INSTRUCTIONS

CONTENTS

- (1) Left Rear Door
- (1) Right Rear Door
- (2) Latches
- (6) Latch Spacers
- (2) Door Straps
- (2) Door Rubber Stoppers
- (4) M8 Lock Nuts
- (4) M8 Flat Washers
- (4) M6x1.0x25mm Screws
- (4) M6 Flat Washers
- (4) M6 Lock Washers
- (2) M4x0.7x20mm Screws
- (6) M4 Flat Washers
- (2) Allen Wrenches

TOOLS REQUIRED

- Trim Panel Removal Tool
- T-50 Torx Bit
- T-40 Torx Bit
- Rubber Mallet
- 10mm Socket
- Ratchet

SKU # J132134-JL

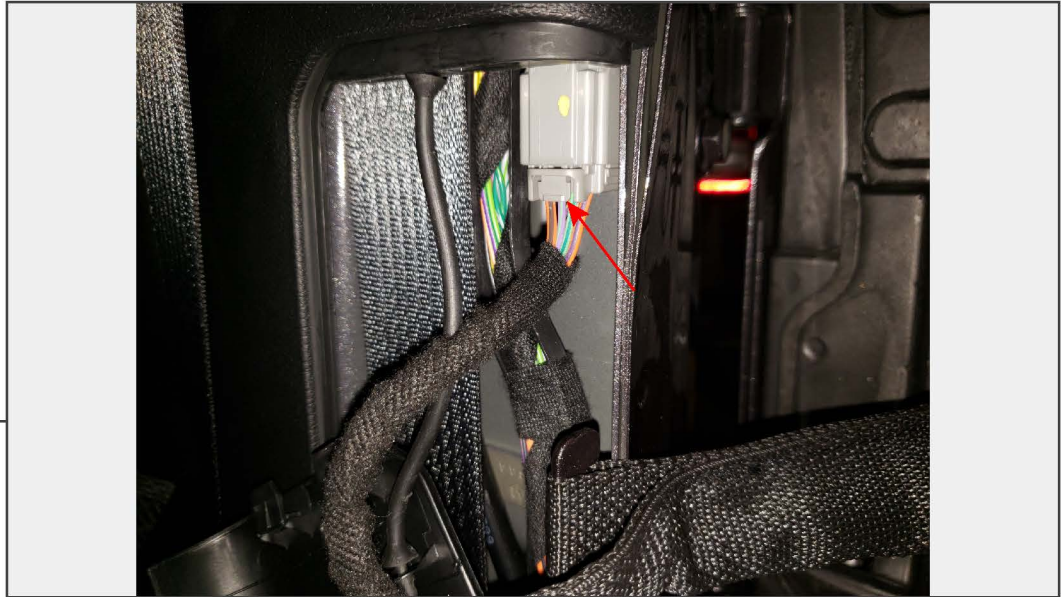
STEP 1

Begin by removing the T-50 Torx nuts on the bottom of the factory door hinges. These will not be reused.

STEP 2

Slide the front seat forward to access the interior trim panel. Using a panel removal tool, pry the panel off.

Note: The panel has indents on the sides, pry from those indents.

STEP 3

Roll down the windows so that the door is easier to handle while removing it from the vehicle. Unplug the connector. Slide the hinge strap off the chassis mount.

STEP 4

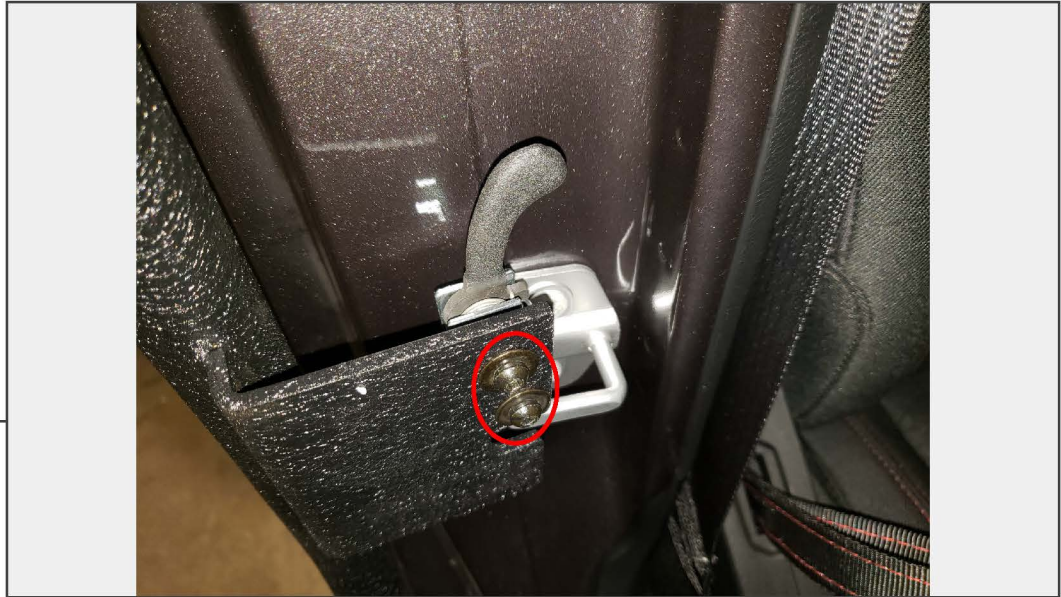
Locate, and remove the T-40 Torx bolt securing factory door hinge stop. Lift the door up to remove it from the vehicle. Then reinstall the factory T-40 Torx bolt as a place holder to ensure it doesn't get lost.

STEP 5

Install the new door, you may need to use a rubber mallet to seat the door all the way onto the hinge. Use the supplied M8 nut and washer to secure the door to the hinge.

STEP 6

Install the rubber door stopper to the door using the M4x0.7x15mm bolt, and M4 flat washer.

STEP 7

Loosely install the door latch using the M6x1.0x25mm bolts, flat washers, and lock washers.

STEP 8

Align the door latch with the striker using the latch spacers as seen above.

Note: Spending extra time aligning the latch to the striker will result in a smoother feel when opening and closing the door.

STEP 9

Install the door strap from the door to the chassis mount. Re-install the trim panel.

STEP 10

Repeat Steps 1-9 for the remaining rear door.

Installation is now complete.