



---

# EXTREME HD ADVENTURE FRONT DOORS

(2018-2025+ WRANGLER JL)

---

## INSTALLATION INSTRUCTIONS

### CONTENTS

---

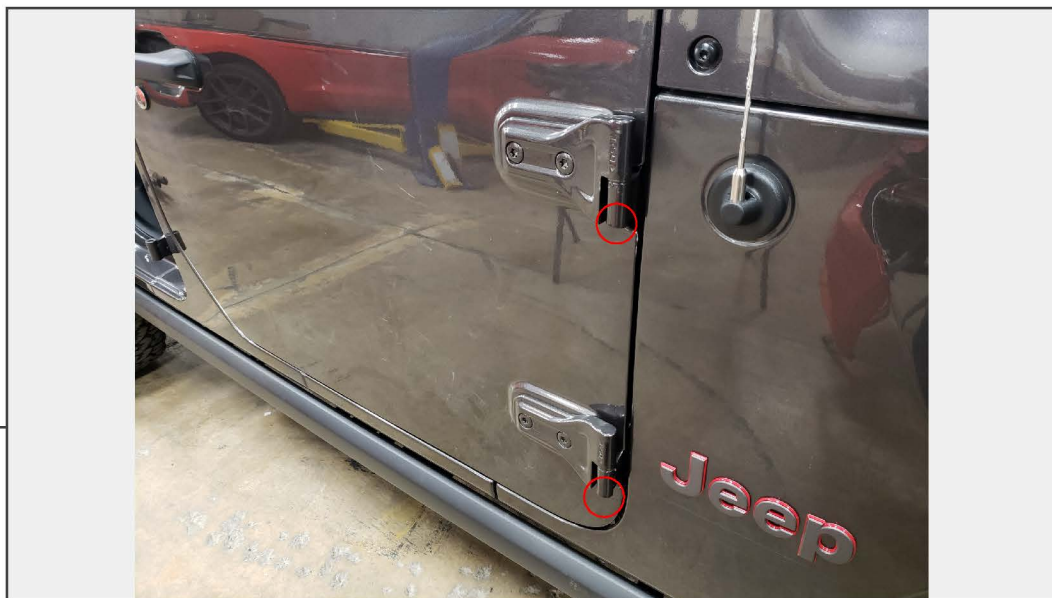
- (1) Left Front Door
- (1) Right Front Door
- (2) JK Style Mirrors
- (2) Mirror Mounts
- (2) Latches
- (6) Latch Spacers
- (2) Door Straps
- (2) Door Rubber Stoppers
- (4) M10x1.5x20mm Bolts
- (4) M10 Flat Washers
- (4) M10 Lock Washers
- (2) M8x1.25x20mm Screws
- (4) M8 Lock Nuts
- (6) M8 Flat Washers
- (2) M8 Lock Washers
- (4) M6x1.0x25mm Screws
- (4) M6 Flat Washers
- (4) M6 Lock Washers
- (2) M4x0.7x20mm Screws
- (6) M4 Flat Washers
- (2) Allen Wrenches

### TOOLS REQUIRED

---

- Trim Panel Removal Tool
- T-50 Torx Bit
- T-40 Torx Bit
- Rubber Mallet
- 10mm Socket
- Ratchet

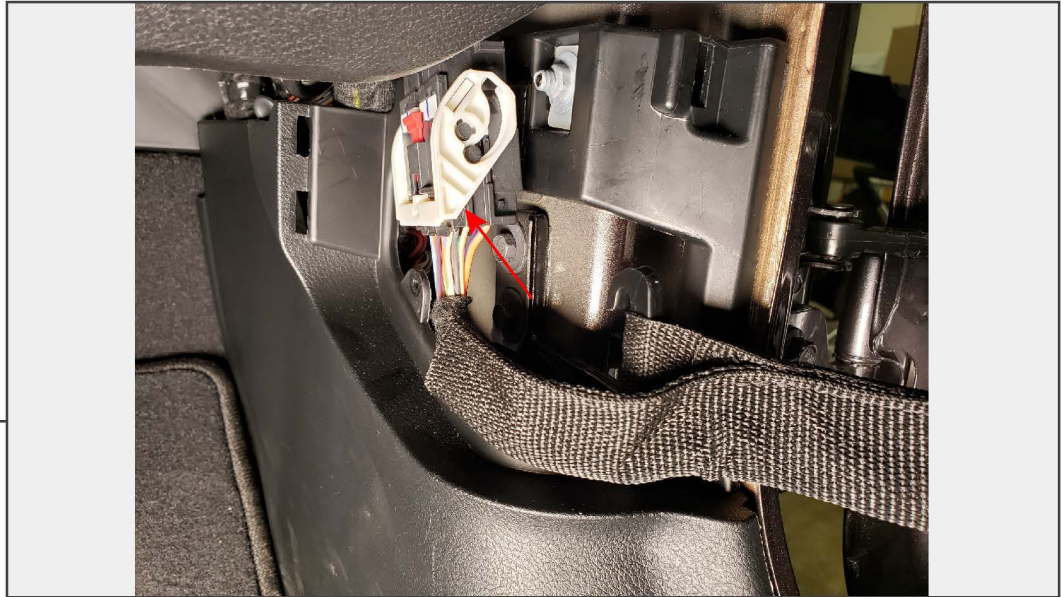
SKU # J132133-JL

**STEP 1**

Begin by removing the T-50 Torx nuts on the bottom of the factory door hinges. These will not be reused.

**STEP 2**

Using a panel removal tool, pry the kick panel away from the vehicle body.

**STEP 3**

Roll down the windows so that the door is easier to handle while removing it from the vehicle. Unplug the door electrical connector by sliding the red lock, and then folding the white connector latch. Slide the hinge strap off the chassis mount hook.

**STEP 4**

Locate, and remove the T-40 Torx bolt securing factory door hinge stop. Lift the door up to remove it from the vehicle. Then, reinstall the factory T-40 Torx bolt as a place holder to ensure it doesn't get lost.

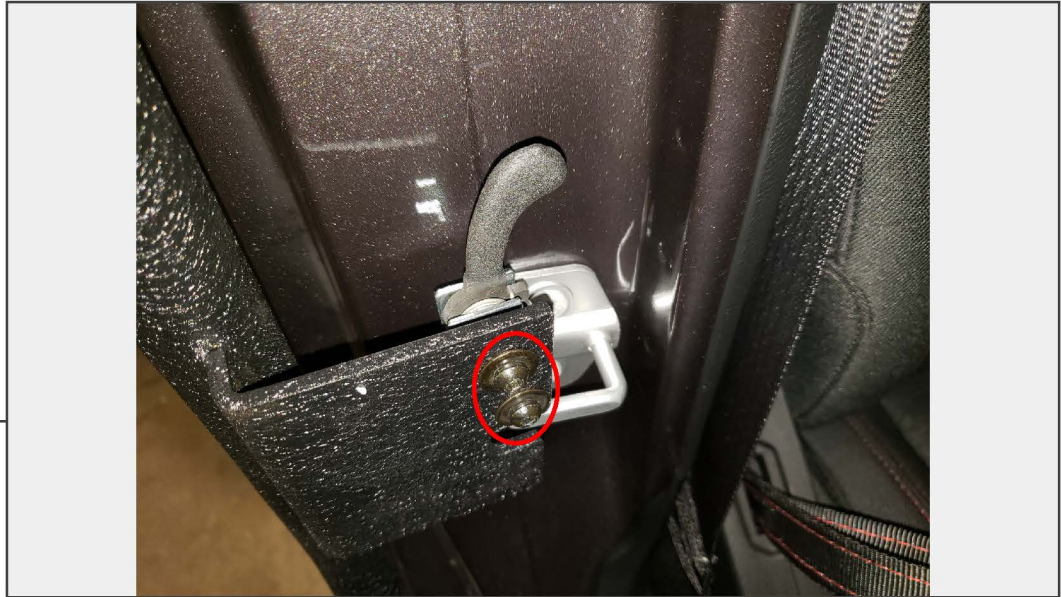


**STEP 5**

Install the new door, you may need to use a rubber mallet to seat the door all the way onto the hinge. Use the supplied M8 nut and washer to secure the door to the hinge.

**STEP 6**

Install the rubber door stopper to the door using the M4x0.7x15mm bolt, and M4 flat washer.

**STEP 7**

Loosely install the door latch using the M6x1.0x25mm bolts, flat washers, and lock washers.

**STEP 8**

Align the door latch with the striker using the latch spacers as seen above.

Note: Spending extra time aligning the latch to the striker will result in a smoother feel when opening and closing the door.

**STEP 9**

Install the door strap from the new door to the chassis mount. Reinstall the interior trim panel.

**STEP 10**

Install the mirror mount to the door using the (2) M10x1.5x20mm bolts, lock washers, and flat washers.



**STEP 11**

Install the supplied mirror to the mirror mount using the (1) M8x1.25x20mm bolt, flat washer, and lock washer.

Installation is now complete.