



REAR TUBULAR ADVENTURE DOORS

(2007-2018 WRANGLER JK - 4 DOOR)

INSTALLATION INSTRUCTIONS

CONTENTS

- (1) Left Rear Door
- (1) Right Rear Door
- (2) Latches
- (4) Latch Spacers
- (2) M6 Dual Nut Latch Plate
- (2) Door Straps
- (2) Door Rubber Stoppers
- (4) M8 Lock Nuts
- (4) M8 Flat Washers
- (4) M6x1.0x25mm Screws
- (4) M6 Flat Washers
- (4) M6 Lock Washers
- (2) M4x0.7x20mm Screws
- (6) M4 Flat Washers
- (2) Allen Wrenches

TOOLS REQUIRED

- Trim Panel Removal Tool
- 13mm Socket
- Ratchet
- T50 Torx Bit
- Rubber Mallet

SKU # J132130

STEP 1

Begin by removing the T-50 Torx nuts on the bottom of the factory door hinges. These will not be reused.

STEP 2

Slide the front seat forward to access the interior trim panel. Using a panel removal tool, pry the panel off. **Note: The panel has indents on the sides, pry from those indents.

STEP 3

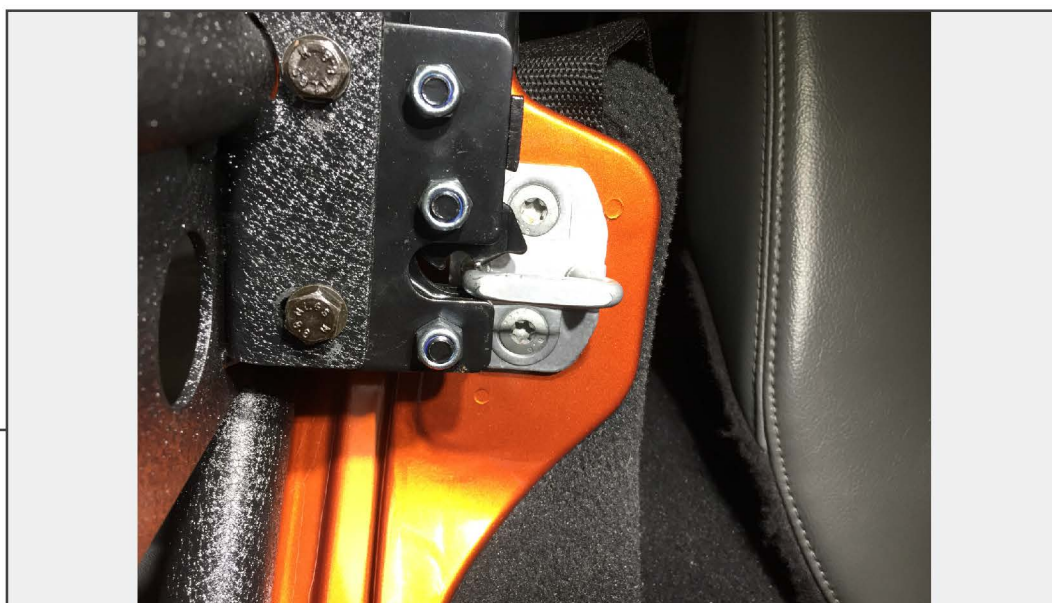
Roll down the windows so that the door is easier to handle while removing it from the vehicle. Unlock the red locking mechanism and then unplug the connector. Slide the hinge strap off the chassis mount. Lift the door up to remove it from the vehicle.

STEP 4

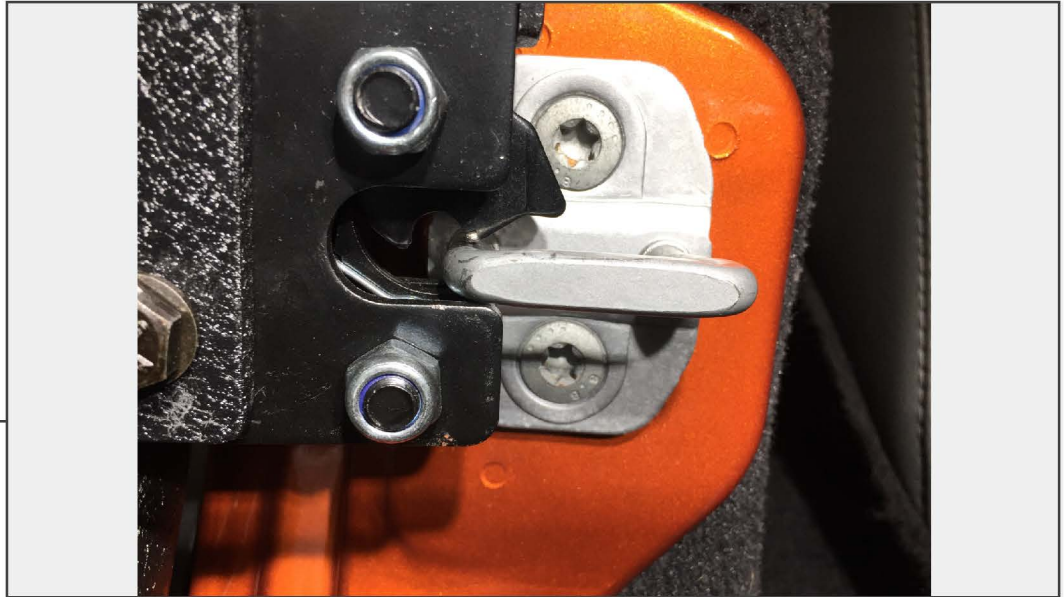
Install the tubular door, you may need to use a rubber mallet to seat the door all the way onto the hinge. Use the supplied M8 lock nut and flat washer to secure the door to the hinge.

STEP 5

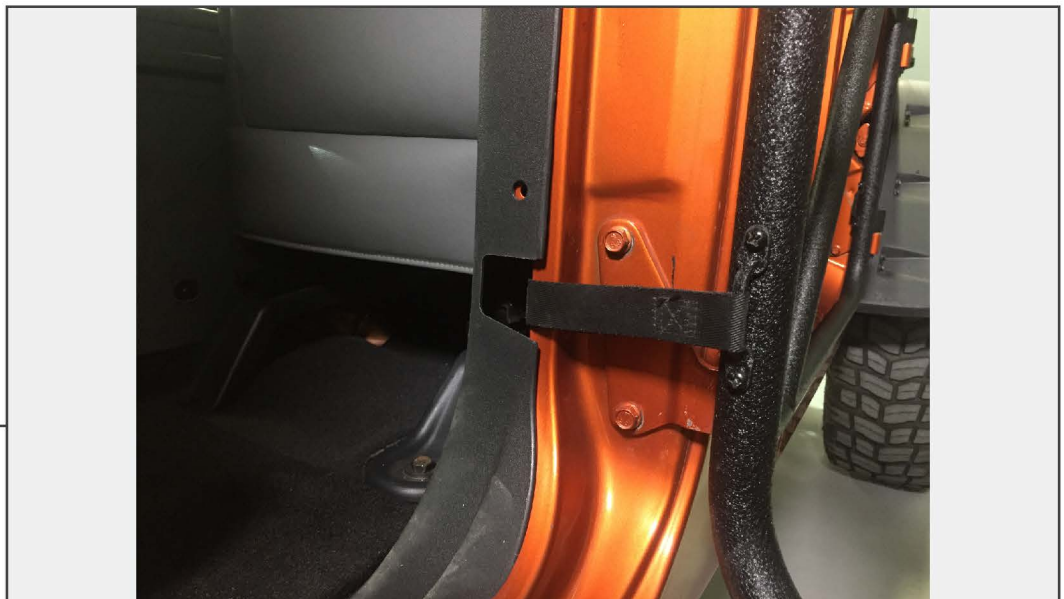
Install the rubber door stopper to the door using the M4x0.7x15mm screw, and M4 flat washer.

STEP 6

Loosely install the door latch using the M6x1.0x25mm screws, flat washers, lock washers, and (1) M6 dual nut plate.

STEP 7

Align the door latch with the striker using the latch spacers as seen above. **Note: Spending extra time aligning the latch to the striker will result in a smooth feel when opening and closing the door.

STEP 8

Install the door strap from the tubular door to the chassis mount. Reinstall the trim panel.

Installation is now complete.