

# REDROCK

## KEY TO COMPONENTS

- A. 1 ea. Mounting bracket
- B. 1 ea. U brackets
- C. 1 ea. M10 Wing nuts
- D. 1 ea. Velcro strap
- E. 1 ea. M10x1.0x70mm carriage bolt
- F. 1 ea. M8x1.0x30mm carriage bolt
- G. 2 ea. M8x1.25x50mm Hex head bolt
- H. 3 ea. M8 flat washer
- I. 3 ea. M8 split washer
- J. 1 ea. M10 flat washer
- K. 1 ea. M10 split washer
- L. 2 ea. Spacer
- M. 1 ea. Plastic Knob

## TOOLS NEEDED

T-50 torx bit  
T-30 torx bit  
10mm socket  
#2Philip's head  
screw driver

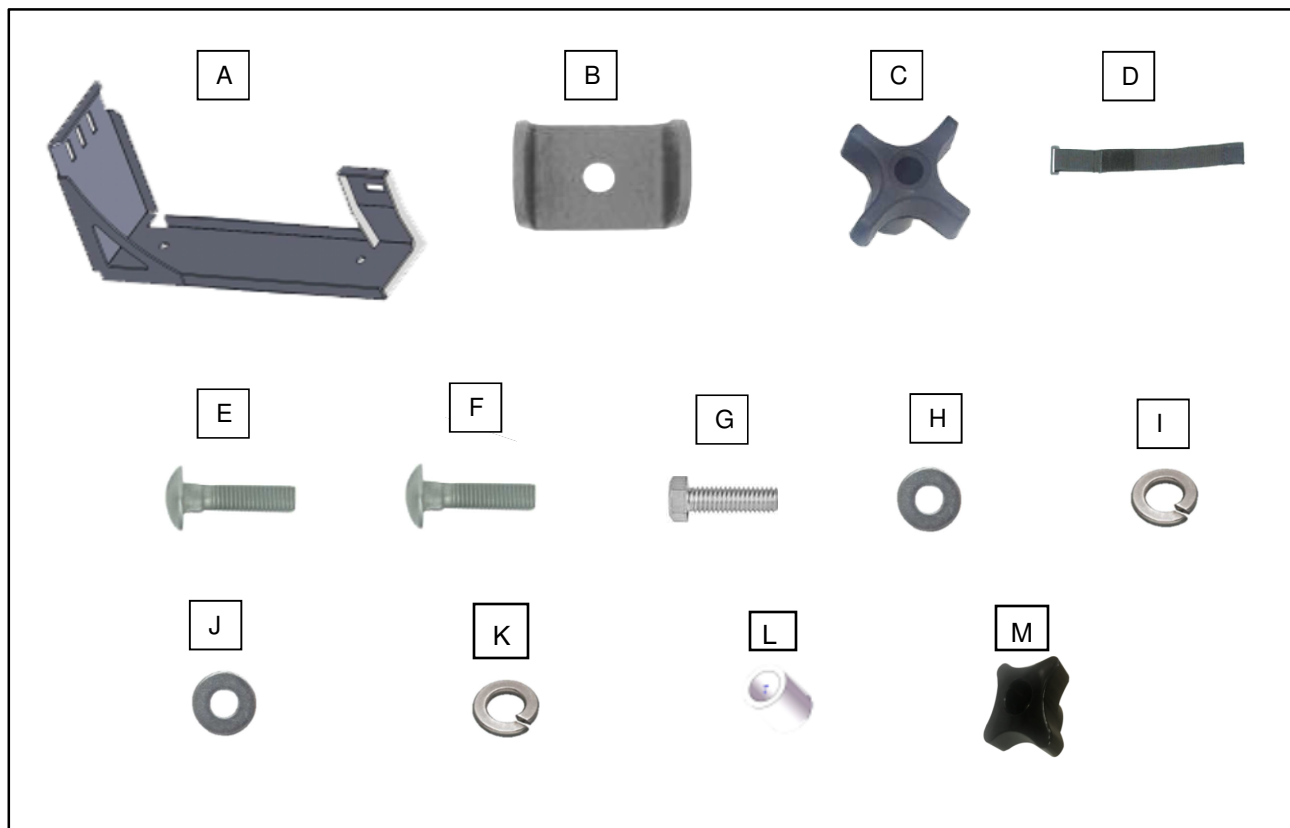
## Duratrek Hi-Lift Jack Mounting Bracket

### Installation Instructions

Part Number:J130910

FITS Jeep Wrangler JK

07-18



Please take a few minutes to read and thoroughly familiarize yourself with the installation procedures outlined in this manual. Following the steps as outlined will save you time and help reduce mistakes. Once the instructions are reviewed, if you feel that you are not capable of safely installing the parts seek the help of a qualified installation expert to help you complete the job. The manufacture is in no way responsible for any personal injury or vehicle damage that may occur during the installation.

### California Proposition 65 Warning!

This product may contain lead a chemical known to the State of California to cause cancer and birth defects or other reproductive harm. For more information go to [www.P65Warnings.ca.gov](http://www.P65Warnings.ca.gov).

**Step 1:**  
Remove factory rear tailgate plastic hing bracket covers.

**Step 2:**  
Leaving the tailgate shut remove the right factory hinge bracket bolts on the tailgate. Fig 1

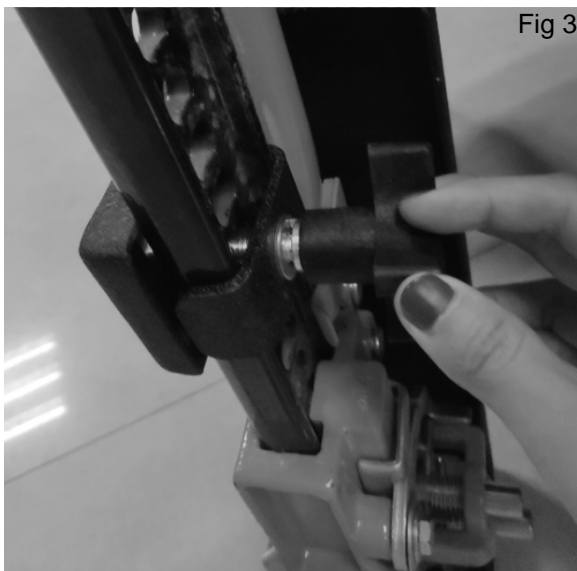
**Step 3:**  
Insert one of the supplied spacers into each of the holes in the OE hinge bracket.

**Step 4:**  
Using the 2 supplied M8 50mm bolts and washers install the Jack Mount to the tailgate. Fig 2

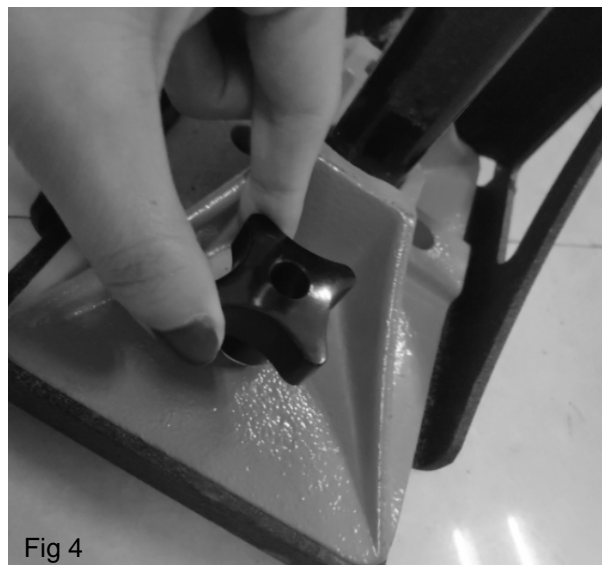


**Step 5:**  
Using the supplied M10 carriage bolt and washer, U bracket,Wing nut install the Upper Mount Bracket in the left side hole. Fig 3

**Step 6:**  
Using the supplied M8 carriage bolt, washer, and knob secure your Jack to the foot of the Jack Mount Bracket. Fig 4



Using compont B / E / J / K / C



Using compont F / H / I / M

This completes the installation.