



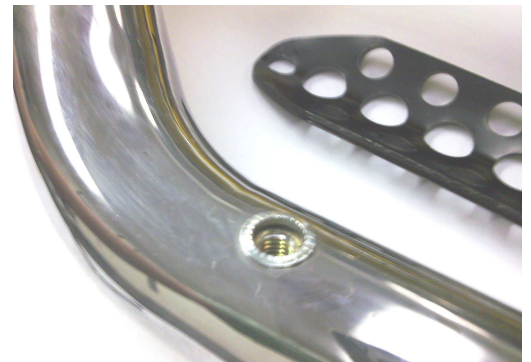
## DOMINATOR

### CLEANING INSTRUCTIONS

1. Remove your aluminum step pads using a 5/8" hex tool.



2. Apply a fine cleaning solution to a clean cloth. Gently wipe away all dust, mud, and salt from the inside of the step pad nutsert. Avoid dropping any liquid directly into the nutsert. Protect the finish by applying a non-abrasive wax (e.g. pure carnauba).



3. Repeat above steps for all nutserts and aluminum step pads.

4. To prevent corrosion and to avoid getting moisture inside the tube; apply a small bead of silicone around the nutsert, and to the screw, before reinstalling the step pad, to re-seal it.



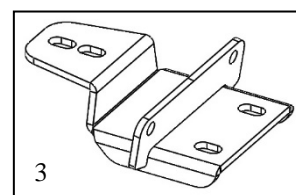
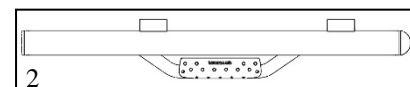
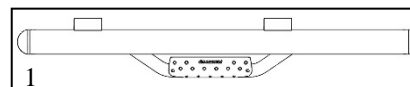
5. Replace the aluminum step pads and tighten the bolts back into place using the 5/8" hex tool.

**Installation instructions**  
**Dominator D2 Side Steps Part # D24926 (T-PS)**  
**2007 - 2016 Jeep Wrangler 2 Doors**

Do not attempt to install this product on any vehicle other than the one listed above!

PARTS LIST

item	Qty.	Part No	Description	Torque
1	1	D24926D	Driver Side Step	
2	1	D24926P	Passenger Side Step	
3	4	45052	Mounting Bracket	
4	4		M8 x 25 Hex bolt	20 Lbs ft
5	12		5/16 x 1" Hex bolt	16 Lbs ft
6	20		5/16" Flat washer	
7	12		5/16" Spring lock washer	
8	8		5/16" Hex nut	
9	4		5/16" "U" nut	
10	8		1/4"x 1" Hex bolt	4 Lbs ft
11	16		1/4" Flat washer	
12	8		1/4" Spring lock washer	
13	8		1/4" Hex nut	



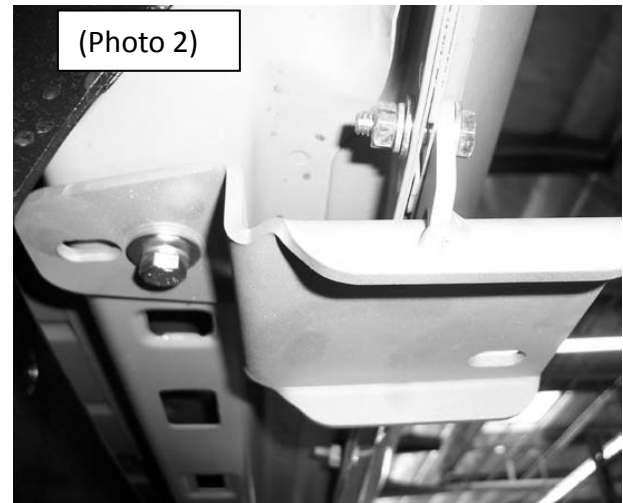
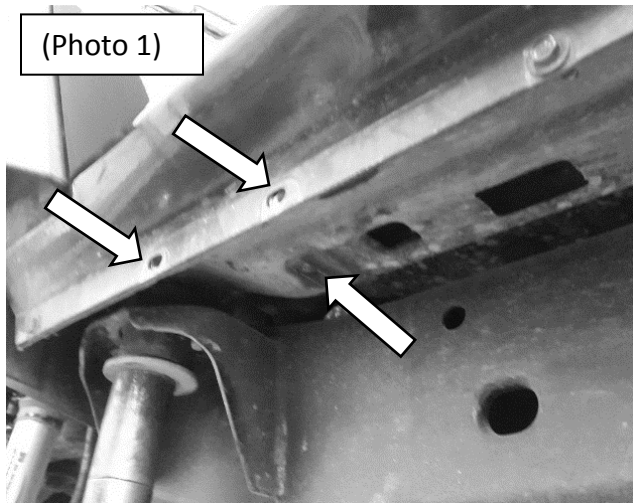
**Tool Required:**

- A. 1/2", 7/16", 13mm, 10mm Wrench
- B. Ratchet
- C. Ratchet extension
- D. 1/2", 7/16", 13mm, 10mm socket

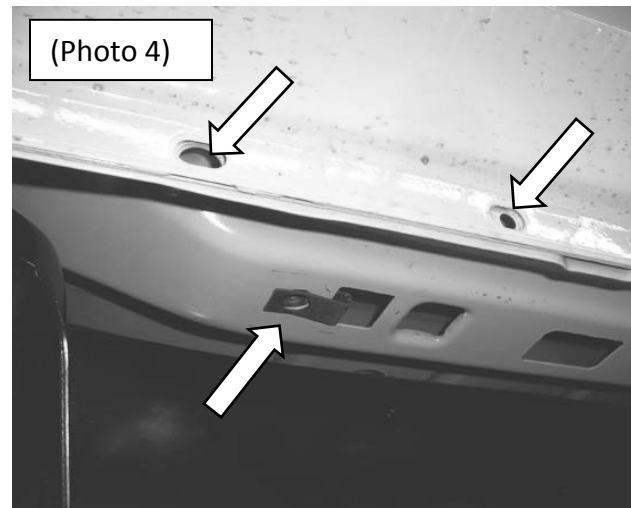
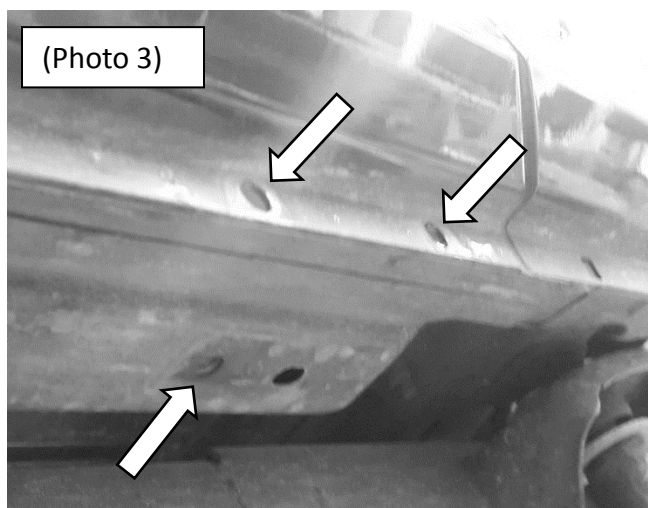
Read the installation instructions completely and verify that all of the parts listed are accounted for. If you have defective, missing or damaged parts or need assistance, please contact *Go Rhino Products* for fast, friendly customer service at: 1-888-427-4466 or email: [warranty@gorhino.com](mailto:warranty@gorhino.com)

**NOTE: IF THE VEHICLE IS EQUIPPED WITH FACTORY SLIDER BARS, REMOVE THE FASTENERS, BRACKETS AND SLIDER BARS FROM THE VEHICLE.**

1. **If vehicle had factory slider bars.** Begin by installing the driver side front bracket. Locate the holes in the body pinch mold and the threaded hole in the underside of the body. **Photo #1**
2. Attach (1) 45052 mounting bracket to the pinch mold using (2)  $\frac{1}{4}$ " x 1" hex bolts, flat washers, lock washers, hex nuts and to the body using (1) M8 x 25" hex bolt, lock washer and flat washer. Do not tighten. **Photo #2**
3. Repeat the above procedure to install (1) 45052 mounting bracket at the rear position. **Photo #3.** Do not tighten.



4. **If vehicle has not factory slider bars.** This installation uses (2) mounting brackets per side. Begin by installing the driver side front bracket. Locate the holes in the body pinch mold and in the underside of the body. Remove the black tape covering the round hole in the body and install (1)  $\frac{5}{16}$ " u-nut as shown. **Photo #4**
5. Attach (1) 45052 mounting bracket to the pinch mold using (2)  $\frac{1}{4}$ " x 1" hex bolts, flat washers, lock washers, hex nuts and to the body using (1)  $\frac{5}{16}$  x 1" hex bolt, lock washer and flat washer. Do not tighten. **Photo #2.** Repeat the above procedure to install (1) 45052 mounting bracket at the rear position. Do not tighten.



6. Attach D24505D driver side step to each of the mounting brackets using (2) 5/16" x 1" hex bolts, (4) flat washers, (2) lock washers and (2) hex nuts. **Photo #5.**



7. Align the side steps with the vehicle and tighten all bracket and side step nuts and bolts. Repeat the above procedure to install the passenger side brackets and side step.
8. Remember to check and retighten the nuts and bolts every six months.

