



## JL Bruiser™ Front Bumpers

**IMPORTANT:** Thank you for purchasing this Poison Spyder product. Please read through this entire document before proceeding with installation. If you are not confident in your mechanical skills, please seek the help of a professional to perform the installation. Check your packages immediately upon arrival to ensure that everything listed is included, and to check for damage during shipping. If anything is missing or damaged, or if you need technical assistance with any aspect of this installation, call Poison Spyder at (951) 849-5911 as soon as possible. This document last updated June 2018.

### APPLICATIONS

These installation instructions apply to the following Poison Spyder products:



**19-57-010DBTP1** JL Bruiser Front Bumper (shown above)

**19-55-010DBTP1** JK Bruiser MID Front Bumper

### PARTS LIST

Please check your packages immediately upon arrival to ensure that everything listed is included, and to check for damage during shipping. If anything is missing or damaged, call Poison Spyder at (951) 849-5911 as soon as possible.

- (1) JL Bruiser™ Front Bumper
- (1) JL Bruiser™ Recessed Winch Cradle
- (2) JL Bruiser Winch Cradle Spacer Plate
- (1) JL Bruiser Winch Cradle Bracket Left
- (1) JL Bruiser Winch Cradle Bracket Right
- (1) JL Bruiser™ Front Bumper Hardware Kit  
PN: HW-19-57-010 Includes:
  - (8) 1/2" Hardened Flat Washer
  - (8) 1/2-13 Gr8 Nylon Insert Lock Nut
  - (4) 5/16-18 clip-nut
  - (4) 5/16-18 X 1 SS Flat Head Cap Screw
  - (4) 3/8-16 X 1 Gr8 Hex Head Cap Screw
  - (4) 3/8-16 Gr8 Nylon Insert Lock Nut
  - (8) 3/8 Hardened Flat Washer

### TOOLS NEEDED

- Mechanic's tool set with assortment of metric and SAE hand tools
- Dead blow hammer or rubber mallet
- Protective tape, film or blankets

### INSTALLATION PROCEDURE

1. **Park vehicle on a level** surface and set the emergency brake. You will want to wear eye protection beyond this point.
2. **Remove the plastic lower air dam.** The bottom fasteners are bolts which can be removed with a socket or wrench.



Use a push-in retainer removal tool to pop out the plastic push-in retainers along the front edge of the air dam. If you do not have a push-in retainer tool, a flat-edge screwdriver or small pry-bar may be used.



With the fasteners removed, remove the plastic lower air dam and set it aside.



3. Un-bolt the metal air dam retainer bracket.



with the bolts removed, slide the metal air dam retainer bracket upward to slide the upper tabs out of the frame horns.



Remove the metal air dam retainer bracket and set it aside.



4. If your Jeep is equipped with factory fog lamps, reach behind the bumper and disconnect the fog lamp wiring harness from the chassis wiring harness.



5. Use a push-in retainer removal tool to pop out the plastic push-in retainers along the top edge of the plastic upper air dam. If you do not have a push-in retainer tool, a flat-edge screwdriver or small pry-bar may be used.



6. Use a ratchet and deep socket to remove the eight (8) nuts that fasten the bumper to the frame. There are two of these nuts on the inner side, and two on the outer side, of each frame rail where it joins the bumper.



With these nuts removed, remove the bumper from the Jeep.





**7. Remove the bumper retaining bracket** from the side of the frame rail.



**8. Drop the Recessed Winch Cradle** into place between the frame rails.



Temporarily “hang” the Cradle by resting the right-angle flanges on to the tops of the Jeep’s bumper mounting flanges.



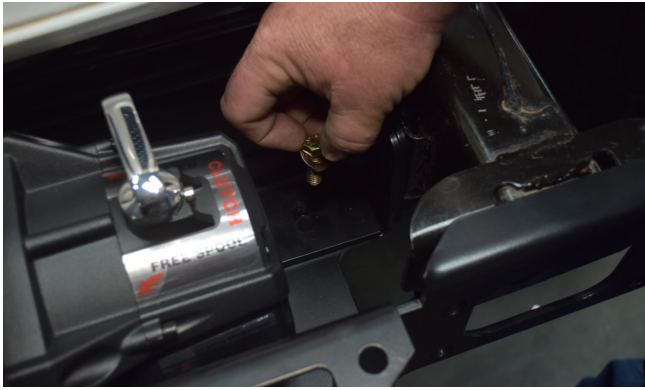
**9. Use the stock bumper bolts** to install the Winch Cradle Mounting Brackets on either side of the Winch Cradle, to fasten it to the inner frame rails.



Note that the Winch Cradle Mounting Brackets are specific for the left and right side. They slip on to the Winch Cradle as shown, so that they sit above the bottom surface and outboard of the side flanges of the Winch Cradle. (photos shown without the Winch Cradle installed onto the Jeep, for clarity)



**10. Use supplied hardware to attach** the Winch Cradle Brackets to the bottom surface of the Winch Cradle.



- 11. Semi-tighten all hardware for the Winch Cradle Brackets.** Do not fully tighten these fasteners at this time, as some slight adjustments may be necessary.



- 12. Place the winch into the Recessed Winch Cradle.** If the winch is new, install it without the cable or rope. If the cable or rope is already installed, it will need to have a removable hook or thimble. Otherwise the cable or rope will need to be un-spooled prior to this step, and re-spooled after the end of the bumper installation. It is also recommended to hook up your winch wiring at this time.



- 13. Install the four mounting bolts** that came with your winch, through the bottom of the Recessed Winch Cradle, into the mounting nuts in the winch.



- 14. Tighten the four winch bolts** to whatever specification is recommended by the winch manufacturer.



- 15. Install the supplied 5/16-18 clip-nuts** into the four nut flanges along the front of the Recessed Winch Cradle. Make sure that the extruded barrel of the clip-nut points downward through the hole in the flange.





**16. A rubber mallet or soft dead-blow hammer** may be needed to properly seat and position the clip-nuts.



**17. Pre-position the two Frame Mount Spacer Plates**, between the Recessed Winch Cradle and the bumper mounting flanges on the ends of the Jeep's frame rails. Slightly loosen the fasteners for the previously-installed Winch Cradle Brackets, if necessary, to allow necessary movement of the Cradle. But keep the fasteners tight enough to hold the Spacer Plates in place, once positioned.



Note that the Spacer Plates are not symmetrical and must be oriented correctly, to match the four corresponding bolt holes in the Cradle and the frame. The space between the bolt holes and the edge of the spacers is wider along one edge. The Spacer Plate should be oriented so the edge with the wide space is at the top, as shown in the photo above. A spud bar or pry bar will be helpful in fine-tuning the placement of the spacer plate.



A piece of packing or masking tape might be helpful to hold the spacer plate in place until the bumper shell is installed.



**18. Install a pair of LED** cube lights (sold separately) into the light mounts of the Bruiser bumper. Use the mounting brackets that were supplied with the lights, to mount them to the light pedestals welded into the interior of the Bruiser bumper. Adjust the position of the light so that it is flush with the exterior surface of the bumper.



**19. Install a winch fairlead** (sold separately) to the front of the Bruiser bumper, using the provided mounting holes, and the hardware that was supplied with the winch fairlead.



**IMPORTANT:** If installing the optional Skid Plate, refer at this point to the instructions that came with the Skid Plate, and proceed with those steps. Return to these instructions and proceed with the next step, below, once the Skid Plate installation instructions have been completed.



**20. With the help of a friend,** move the bumper (and pre-installed skid, if desired) into position close to the front of the Jeep. A padded surface to set the bumper close to the Jeep is helpful. Thread the end of the winch rope (if present) through the fairlead. Also make sure the wiring pigtails for the LED lights are positioned out of the way, so they don't get caught between bumper mounting surfaces.



**21. There are floating bolt plates** pre-installed inside the Bruiser bumper. These bolts interface with the four large bolt holes on each of the two mounting flanges on the ends of the Jeep's frame rails. The bolt plates are "floating", that is, they can move around slightly, in order

to accommodate slight variations in the Jeep manufacturing tolerances. However, this can make it somewhat tedious to get all 8 mounting bolts started into their corresponding bolt holes.



The best strategy is to first try to get one nut threaded on, on either side of the bumper, to start. Once there is at least one nut started on either side, it will be easier to coax the remaining threaded studs through their corresponding bolt holes.

Once the bumper has been drawn into place by tightening the mounting nuts, make sure there is a flat washer installed under each of the mounting nuts, then fully tighten all 8 of them. A deep socket with an extension will be required to reach each nut from the back side of the bumper.

**22. Insert a provided Stainless Steel Flat Head Cap Screw** into each of the four counter-sunk holes along the top of the Bruiser bumper, into the corresponding previously-installed clip-nuts. It may be necessary to use the spud bar, in the adjacent hole, to help with alignment while installing these fasteners.



Leave all of the flat head cap screws loose until all of them are started.



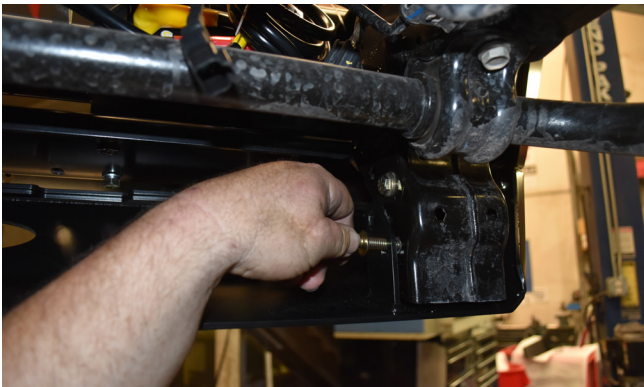


Use a wrench to final-tighten the flat head cap screws. Note that stainless steel is a softer alloy than the hardened steel of the clip-nut, and it may gall or strip if cross-threaded or over-tightened. Do not over-tighten.



*Congratulations, you have completed the installation of your Poison Spyder JL Bruiser™ Front Bumper!*

- 23. If the optional Bruiser Front Skid** has been installed, use the supplied hardware to fasten the skid's lower retaining tabs to the lower frame horns.



- 24. Go back over the entire Bruiser Front Bumper and Skid** (if applicable) assembly and check that each fastener is properly tightened.
- 25. Installation of the Bruiser bumper** is now complete. Finish your installation by making your wiring connections for lights, and attaching winch thimble (or installing rope).