



## INSTALLATION INSTRUCTIONS

# JEEP Wrangler JK Rock Slider HD Rear Bumper | 2007-2017

Item	Kit No.
HD Bumper	83208/83268

## WARNINGS/CAUTIONS

Before you install this kit, read and understand all instructions, warnings, cautions, and notes in this instruction sheet and in the vehicle owner's manual.

Proper installation of this kit requires knowledge of the factory recommended procedures for removal and installation of original equipment components. We recommend that the factory shop manual and any special tools needed to service your vehicle be on hand during the installation. Installation of this kit without proper knowledge of the factory recommended procedures may affect the performance of these components and the safety of the vehicle. We strongly recommend that a certified mechanic familiar with the installation of similar components install this kit.

Many states and municipalities have laws restricting bumper heights and "type". Consult state and local laws to determine if the changes you intend to make to the vehicle comply with the law.

Always wear eye protection when operating power tools.

Before you install this kit, block the vehicle tires to prevent the vehicle from rolling.

OR-FAB Inc. recommends using the Loctite® supplied in the kit on the threads of all kit nuts and bolts unless specified otherwise in these instructions.

If parts are missing from kit, please be prepared to provide the following information:

1. Name of purchase location
2. Bar Code on side of box
3. Date above bar code
4. Date inside box cover
5. Inspector # from inside box cover

## BEFORE STARTING INSTALLATION

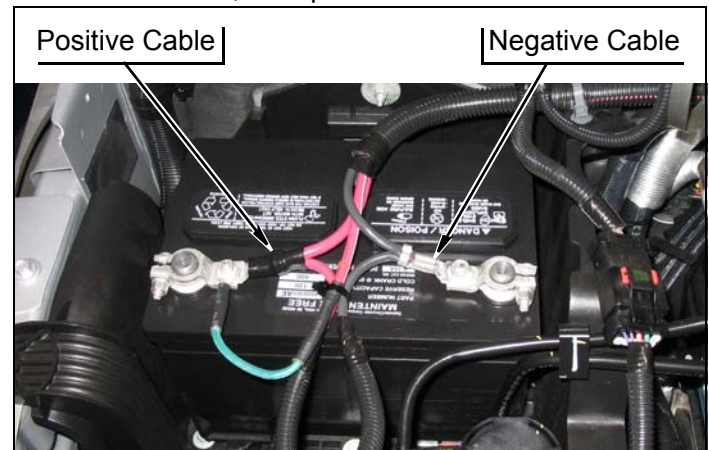
### NOTE

Kit parts are prefaced by the word **kit** and appear in bold print.

1. Carefully read all warnings and instructions completely before beginning.
2. Verify all parts have been received in this kit by checking the parts list at the end of this document.
3. **Only install this kit on the vehicle for which it is specified.** If anytime during the installation you encounter something different from what is outlined in the instructions, call technical support at the number below.
4. Park the vehicle on a clean, dry, flat, level surface and block the tires so the vehicle cannot roll in either direction.

## ENGINE COMPARTMENT

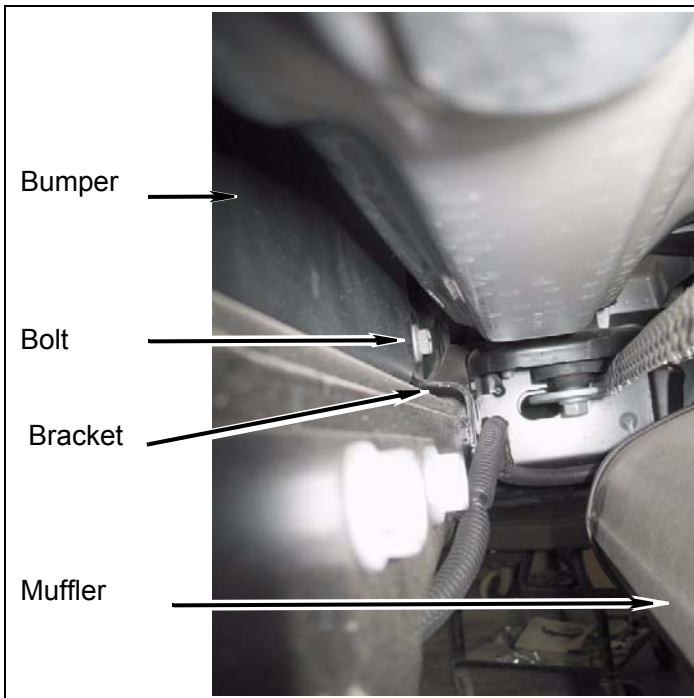
Disconnect both battery cables. Disconnect negative cable first, then positive cable.



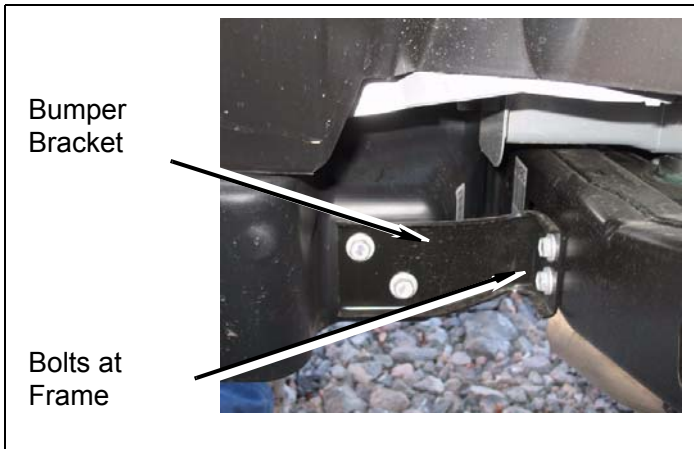
## Rear Bumper

### 1. Remove Factory Bumper

- a. Remove two bolts from brackets on back side of bumper.

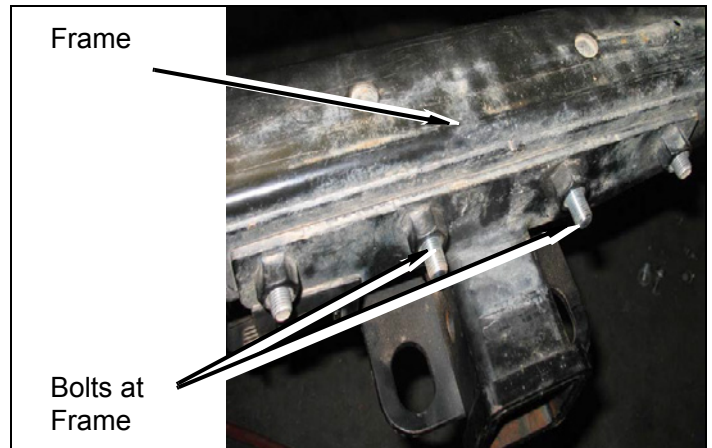


- b. Remove two bolts from each bumper bracket at frame and remove bumper.

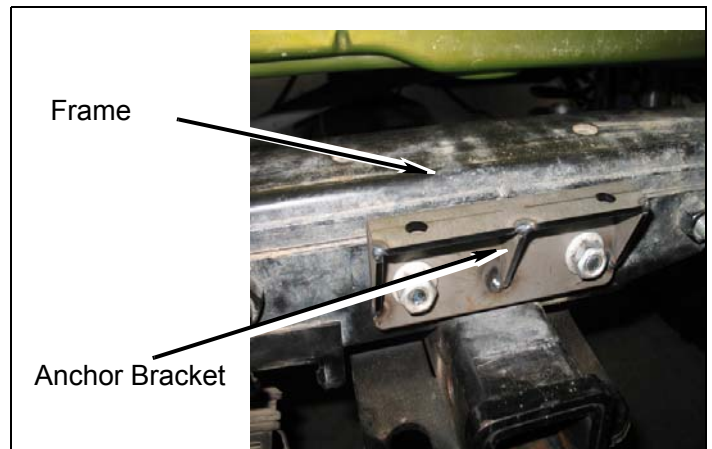


- c. **2012+ Models:** Remove Dvr Rear Tow Hook

- a. Remove two center 12mm bolts from factory hitch mount or tow hook and replace bolts with two *kit bolts* (12m-1.5x120mm) and two *kit washers* (12m)..



- b. Install *kit anchor bracket* with two *kit flange nuts* (12m-1.5). Center *kit anchor bracket* flush with the mounting surface and tighten down *kit flange nuts*..



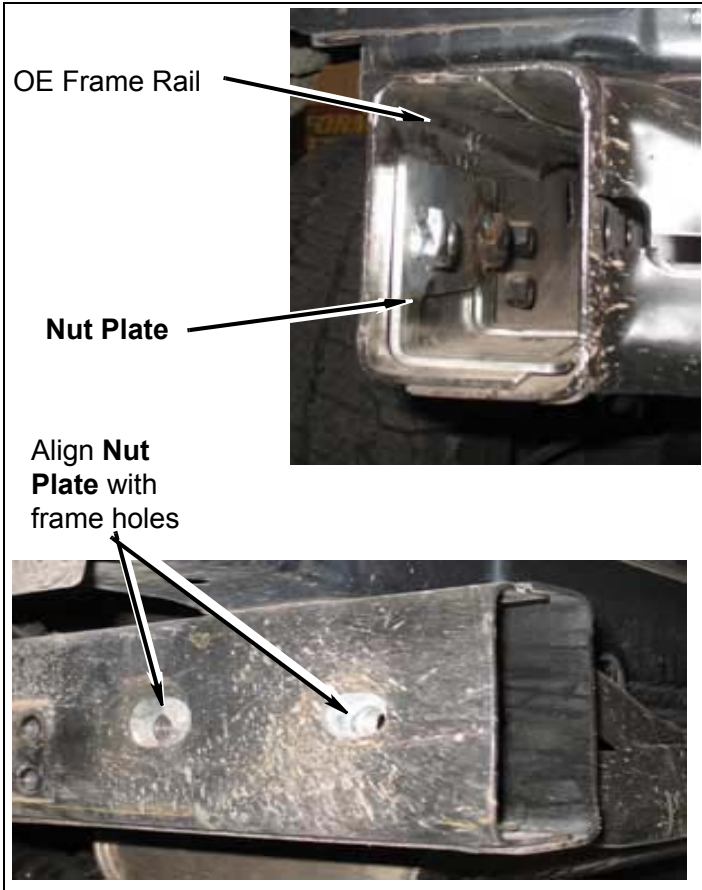
**NOTE:** 2012+ year models with relocated dvr rear tow hook & no rear hitch will require you to use two *kit spacers* in-between rear frame crossmember and *kit anchor bracket*.

## INSTALL REAR BUMPER

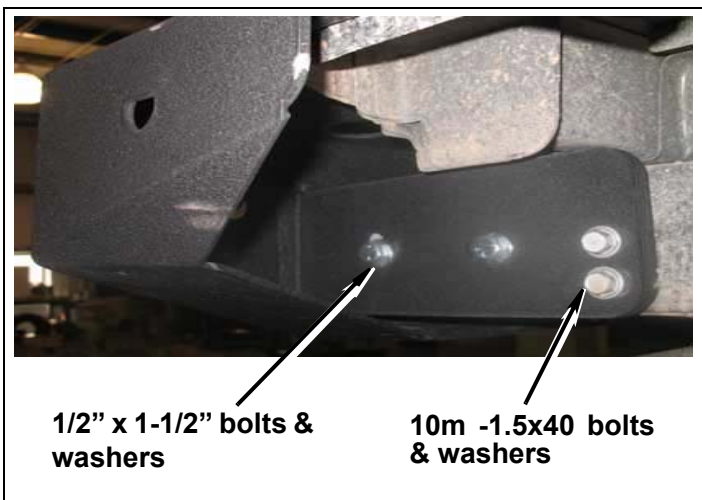
### 1. Rear Bumper *Kit Anchor Plate*



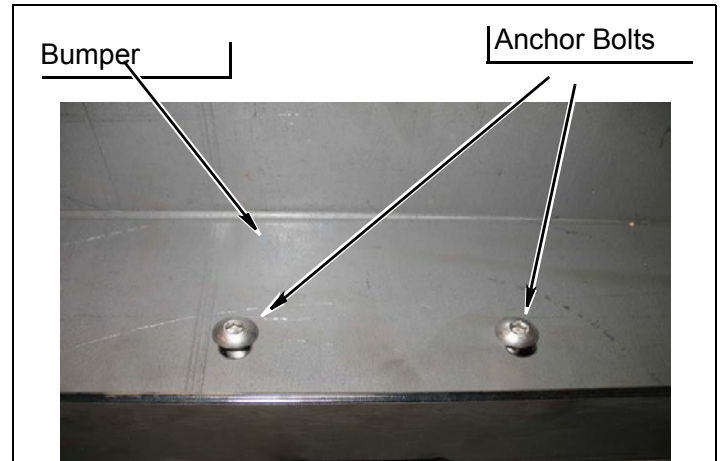
- a. Position **Kit nut plate** inside both pass and dvr frame rail so that nuts line up with holes as shown.



- b. Position **kit bumper** on vehicle. Secure bumper to frame rail on both sides using **kit, 10m-1.5x40 bolts & washers**, for forward two holes and **kit 1/2" x 1-1/2" bolts & 1/2" washers** through **nut plate** inside frame rail. Do not tighten at this time.



- c. Install two **kit bolts (3/8-16x1)** through bumper center plate and into **kit anchor bracket**.

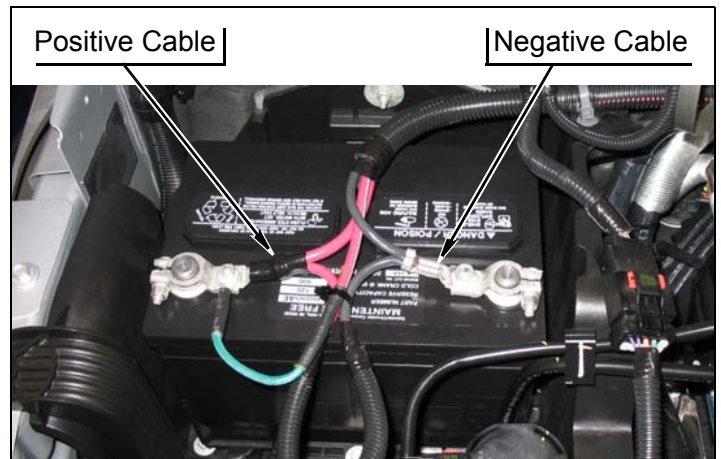


- d. Insure bumper is centered and level. Tighten down all hardware at this time.



## Engine Compartment

1. Connect both battery cables. Connect positive cable first, then negative cable.



## Miscellaneous

1. Check all fasteners to ensure they are tight.

### ⚠WARNING

Retorque all fasteners after 500 miles and after off road use. All body lift components should be visually inspected and fasteners retorqued during routine vehicle servicing.

### NOTE

All warranty information, instruction sheets, and other documents regarding the installation of this product must be retained by the vehicle owner. Information contained in the instructions and on the warranty card will be required for any warranty claims. The vehicle owner needs to understand the modifications made to the vehicle and how they affect vehicle handling and performance. Failure to provide the customer with this information can result in damage to the vehicle and severe personal injury.

## Kit Parts List

### Qty. Description

- 1 **Bumper**, Rear Main
- 1 **Bracket**, Center Rear Anchor Plate
  
- 1 83208 (Hardware bag kit)**
- 4 **Bolt**, 1/2" x 1 1/2"
- 2 **Bolt**, 3/8" x 1"
- 2 **Bolt**, 12m-1.5 x 120
- 4 **Bolt**, 10m-1.5 x 40
- 2 **Nut**, 12m-1.5 Flange
- 2 **Bracket**, Nut Plate
- 4 **Washer**, 1/2" USS
- 4 **Washer**, 10mm
- 2 **Spacer**, Rear Anchor Bracket
  
- 2 **D-Rings**

