



EXTREME HD FULL WIDTH FRONT BUMPER

(2007-2025+ WRANGLER JK, JL)

(2020-2025+ GLADIATOR JT)

INSTALLATION INSTRUCTIONS

CONTENTS

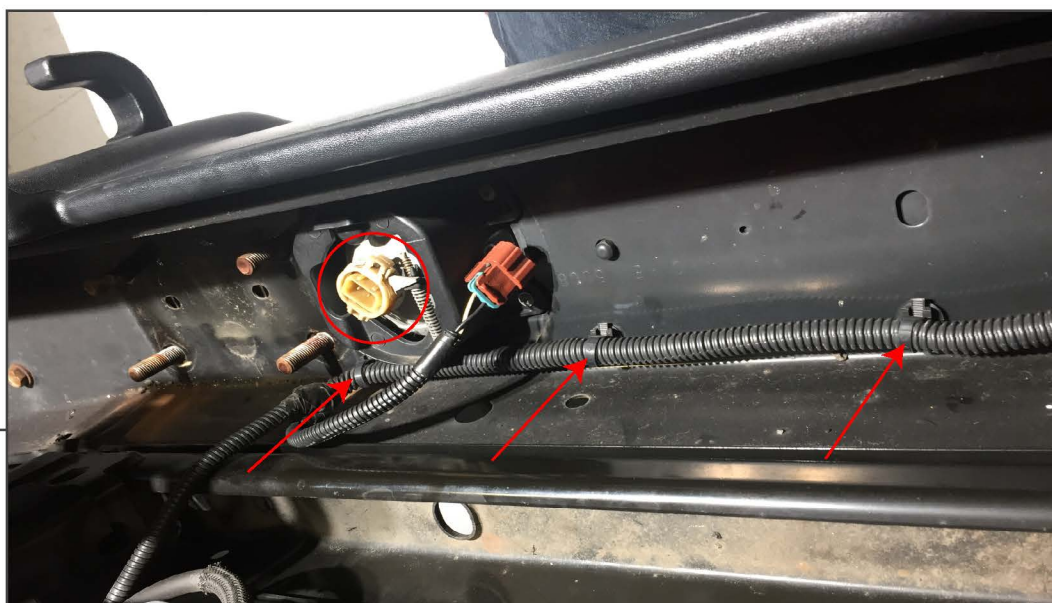
- | | |
|-----------------------------------------|--------------------------------|
| (1) Front Bumper | Light Bar Hardware (Optional): |
| (2) D Rings | (1) LED Light bar |
| (2) 11-17 Fog Light Extension Harnesses | (1) Flood Light Harness |
| (2) 07-10 Fog Light Extension Harnesses | (2) M8 x 1.25 x 70mm Bolts |
| (2) Adapter Harnesses | (2) M8 x 1.25 x 60mm Bolts |
| (2) LED Fog Lights | (4) M8 Polished Nuts |
| (4) M10 x 1.5 x 25mm Bolts | (4) M8 Polished Flat Washers |
| (8) M4 Lock Washers | (4) M8 Polished Lock Washers |
| (8) M10 Flat Washers | (2) Brackets |
| (8) M4 Nuts | (2) Light bar Spacers |
| (8) M10 Lock Washers | (4) M5 x 0.8 x 10mm Bolts |
| (4) M10 Nuts | (1) Allen Key |
| (2) M8 x 1.25 x 50mm Bolts | |
| (4) M8 Flat Washers | |
| (4) M8 Flat Washers | |
| (2) M8 Nuts | |
| (8) M4 x 0.7 x 15mm Bolts | |
| (8) M4 Flat Washers | |

TOOLS REQUIRED

- Flat Head Screwdriver
- Trim Panel Removal Tool
- Metric Socket Set
- Allen Key Set

STEP 1

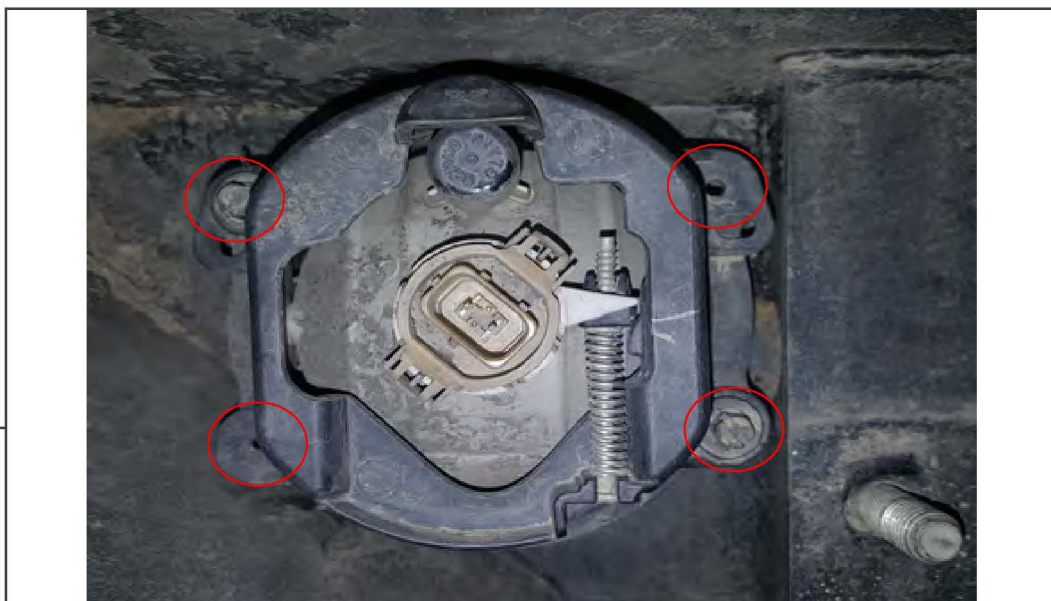
Using a flat head screwdriver or trim panel removal tool, remove the (6) plastic push pins securing the factory splash shield to the vehicle. (4) Across the front edge, (2) on the rear edge.

STEP 2

From under the vehicle, remove the factory fog light connectors and free the fog light wiring loom from the bumper.

STEP 3

From under the vehicle, access and remove the (8) 18mm nuts securing the factory bumper to the vehicle.

STEP 4

OPTIONAL LED FOG LIGHTS: Remove the (2) factory fog lights from the factory bumper by removing the (4) screws. Reinstall the factory fog lights on the new Barricade bumper using (8) M4 bolts, flat washers, lock washers, and nuts.

STEP 5

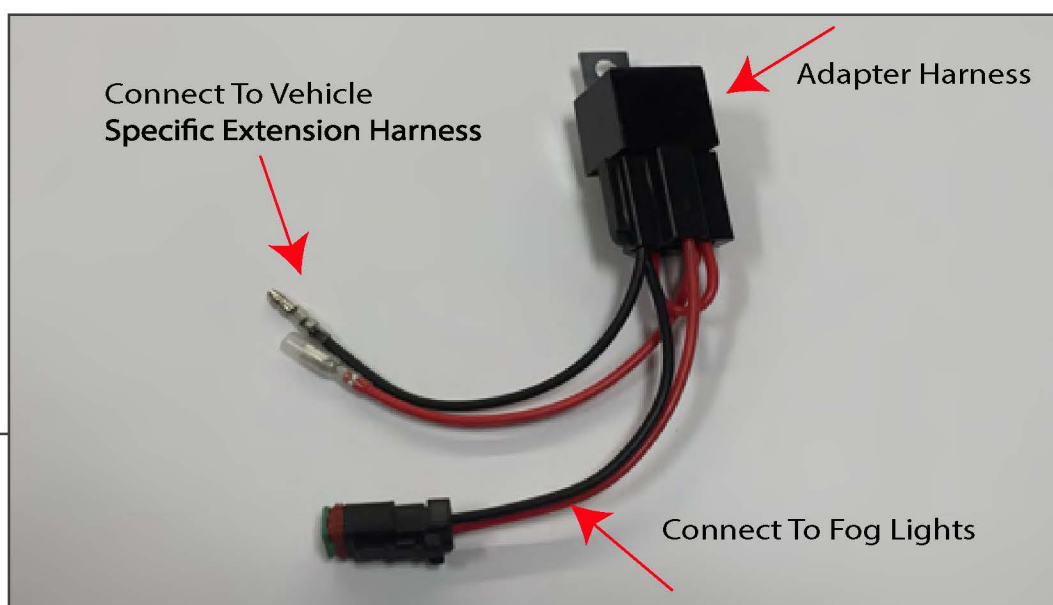
OPTIONAL LED FOG LIGHTS: Install the (2) fog light brackets using the (8) M4 bolts, lock washers, flat washers, and nuts. Install the (2) LED fog lights to the brackets by using the (2) M8x1.75x50mm bolts, lock washers, flat washers, and nuts.

STEP 6

Install the bumper by using the (4) M10 nuts, lock washers, and flat washers to the vehicle frame.VV

STEP 7

Install the bumper by using the (4) M10 nuts, (4) M10 x 25mm bolts, (8) lock washers, and (8) flat washers to the vehicle. Torque to 40 lb ft.

STEP 8

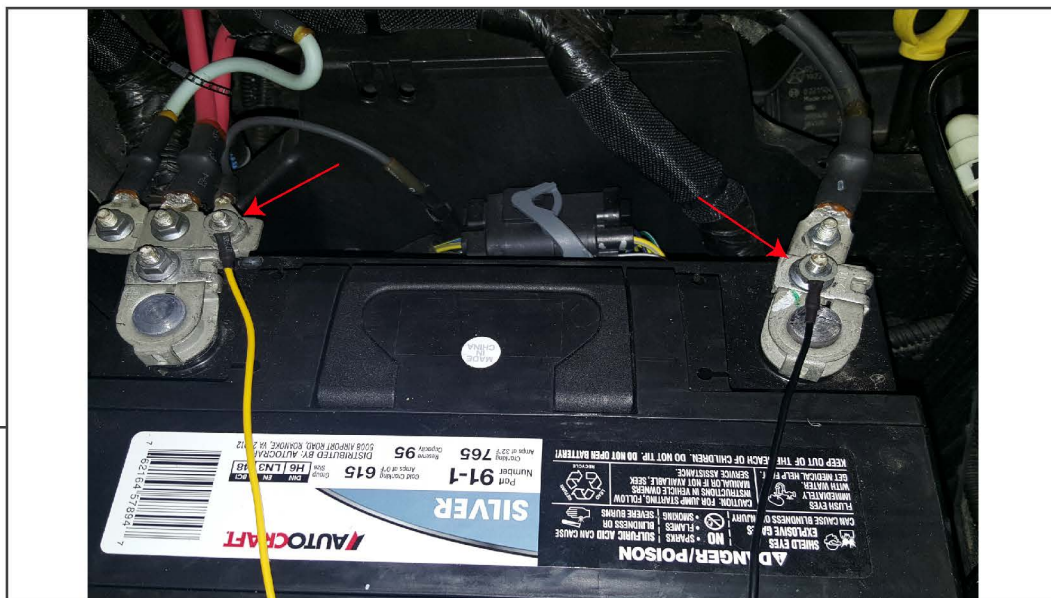
OPTIONAL LED FOG LIGHT WIRING: Connect the adapter harness to the led fog light harnesses. Connect the fog light extension harnesses to the factory fog light wiring harnesses. There are (2) different style factory fog light connectors. Use the correct harness for your vehicle.

STEP 9

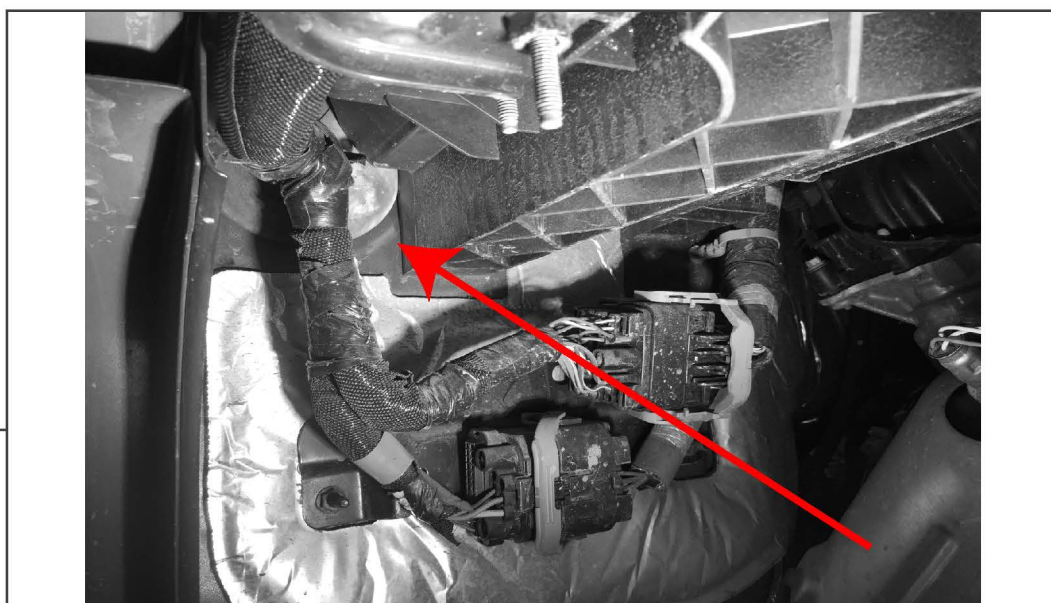
OPTIONAL LIGHT BAR INSTALLATION: Begin by installing the 70mm bolt through the silver light bracket. Install the bracket to the light bar using (1) M8 x 1.25 x 60mm bolts, flat washers, lock washers and nuts for each side. Slide the light bar bracket spacer onto the 70mm long bolt. Install the light bar to the bumper using the flat washer, lock washers, and nuts.

STEP 10

OPTIONAL FOG LIGHT WIRING: Connect the fog lights into the supplied harness. Zip tie any excess wire away from moving and/or hot engine components.

STEP 11

OPTIONAL FOG LIGHT WIRING: Install the yellow 12+ volt wire to the positive battery terminal. Connect the black ground wire to the negative battery terminal. Secure any extra wire out of the way.

STEP 12

OPTIONAL FOG LIGHT WIRING: Route the on/off switch to the interior of the vehicle. Mount the switch in the desired location. Zip tie any extra loose wiring out of the way.