

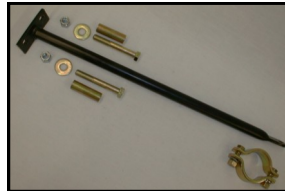


MOUNTAIN OFF ROAD ENTERPRISES LLC.
P O BOX 690 DELTA, COLORADO 81416
970-625-0500
E-MAIL: info@mountainoffroad.com
www.mountainoffroad.com

INSTALLATION INSTRUCTIONS FOR: SB9037W

This steering brace fits 1987-1995 Jeep® YJ Wrangler vehicles with power steering. It is designed to bolt on, no drilling, grinding or welding. It bolts to the passenger side frame rail holes and clamps to the steering box housing just above the sector shaft pitman arm.

1. Install the clamp on the steering box housing just above the pitman arm. The proper assemble sequence is:
7/16" bolt with one flat washer under head. Clamp half. Steering brace (flattened end with hole punched in it). Clamp half. Flat washer, crimp-Loc nut.



2. The brace has a "flattened" end with a hole punched in it. That end goes in-between the two clamp halves at the steering box end.

3. The end that has a welded plate on it with two holes bolts on the passengers side frame rail. There are two 3/4" diameter holes in the frame that you must insert the two steel sleeves (2-3/8" long) into. If you have the plastic frame cover drill 1/2" holes in it, or remove it. Install the brace in place and start all bolts finger tight. Tighten the frame bolts first to 55 Lbs. Ft. torque. Then tighten the bolts on the clamp to 40 Lbs. Ft. torque.

4. Make sure that the steering pitman arm and clamp halves do not contact each other.

TERMS-POLICIES:

DAMAGE CLAIMS: All orders are carefully packed, however, mishandling by the carrier can result in damage. The carrier has the responsibility for the shipment from the time it leaves our warehouse until it is delivered to you. All claims for lost or damaged goods should be reported to the carrier, not to **M.O.R.E.™ LLC.**

RETURNS: No returns will be accepted without prior permission from **M.O.R.E.™ LLC.** After you receive a Return Goods Authorization (RGA) number, merchandise must be returned prepaid and insured. A claim must be made within 30 days from receipt of merchandise. The original invoice or a copy with the RGA number written on must accompany all returns. A 20% restocking fee will be charged on all parts returned for credit or refund unless merchandise is proven to be defective or was shipped wrong by **M.O.R.E.™ LLC.** No merchandise will be issued credit or refund if it has been installed, modified, used in any way or is in unsalable condition.

WARRANTY: All merchandise is warranted to be free from defects in materials and workmanship prior to installation. Any alteration or improper use will void this warranty. Because all parts we sell are intended for use in heavy-duty applications it is not possible to warrantee or guarantee the performance of any items. **M.O.R.E.™ LLC.** products and the products manufactured by others, which we sell may be subject to an infinite variety of conditions due to the manner in which they are used, serviced and/or installed. Purchasers and users of such products rely upon their own judgment as to the suitable use selection, service and installation of such products.

PRODUCT DISCLAIMER: Modification of your vehicle to enhance performance with parts sold by **M.O.R.E.™ LLC.** may create a dangerous condition which could cause serious bodily injury, and the buyer hereby expressly assumes all risks associated with any such modifications. All parts sold by **M.O.R.E.™ LLC.** and for racing or off road use only. Mountain Off Road Enterprises LLC. will not accept responsibility for personal injury or property damage arising from the failure of any parts manufactured or sold by **M.O.R.E.™ LLC.**

Specifications are subject to change without notice.

Jeep®, AMC®, CJ®, YJ®, Wrangler®, are registered trademarks DaimlerChrysler.

M.O.R.E.™, BombProof™, S.R.S.™, SlipLoc™, DoubleJointed™, RockProof™, are trademarks used by **Mountain Off Road Enterprises, LLC.** The **M.O.R.E.™** logo, and this instruction sheet is copyright©, 1999-2008.