



2” FRONT 1” REAR LEVELING KIT

(2007-2018 WRANGLER JK)

INSTALLATION INSTRUCTIONS

CONTENTS

- (2) Front Leveling Blocks
- (2) Rear Leveling Blocks
- (2) Front Sway Bar End Links
- (2) Zerk Fittings
- (2) M12 Lock Nuts
- (2) M12 Flat Washers
- (2) Bushings

TOOLS REQUIRED

- Sockets/Wrench Set
- Ratchet
- Pry Bars
- Floor Jack
- Jack Stands

SKU # J110222

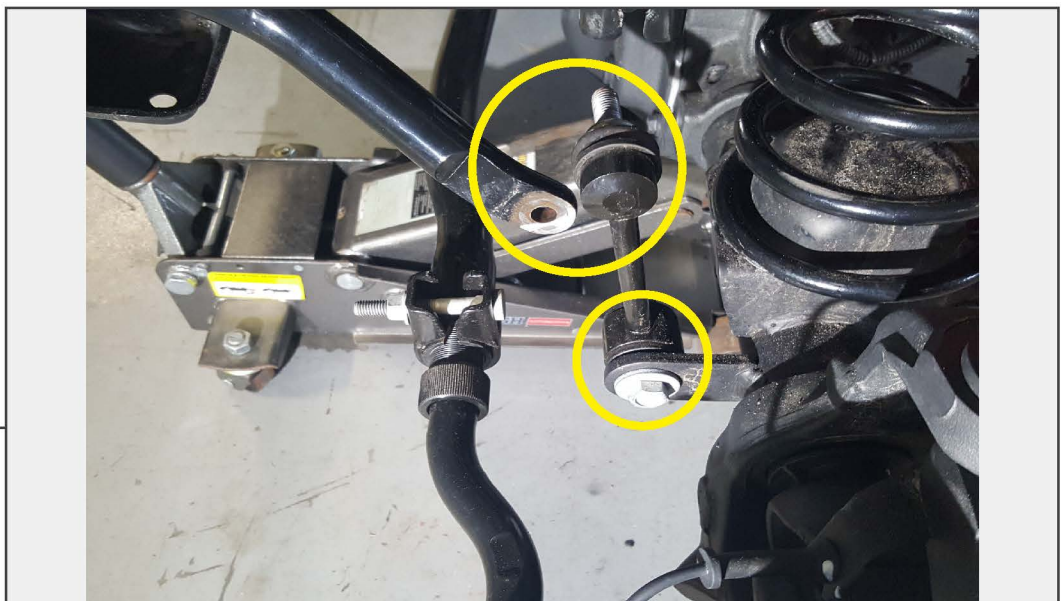
**STEP 1
(FRONT)**



Safely lift and support the front of the vehicle in the air using a jack and jack stands. Remove the front wheels from the vehicle.

Place a floor jack under the axle with light pressure to prevent tension during disassembly.

STEP 2



Remove the upper sway bar link nut to disconnect the link from the sway bar. Remove (1) lower sway bar link bolt to remove the sway bar link from the axle. Remove the sway bar link from the vehicle.

Repeat this procedure to the opposite side of the vehicle.

Note: The lower sway bar link bolt will be reused during assembly.



STEP 3

Remove the lower shock absorber bolt from the axle mount. Hardware will be resued.

Repeat this procedure to the opposite side of the vehicle.



STEP 4

Press downwards on the axle to allow the spring to become loose. Remove the spring and spring isolator from the vehicle. Repeat this procedure to the opposite side of the vehicle.

Note: Using a pry bar may be necessary.

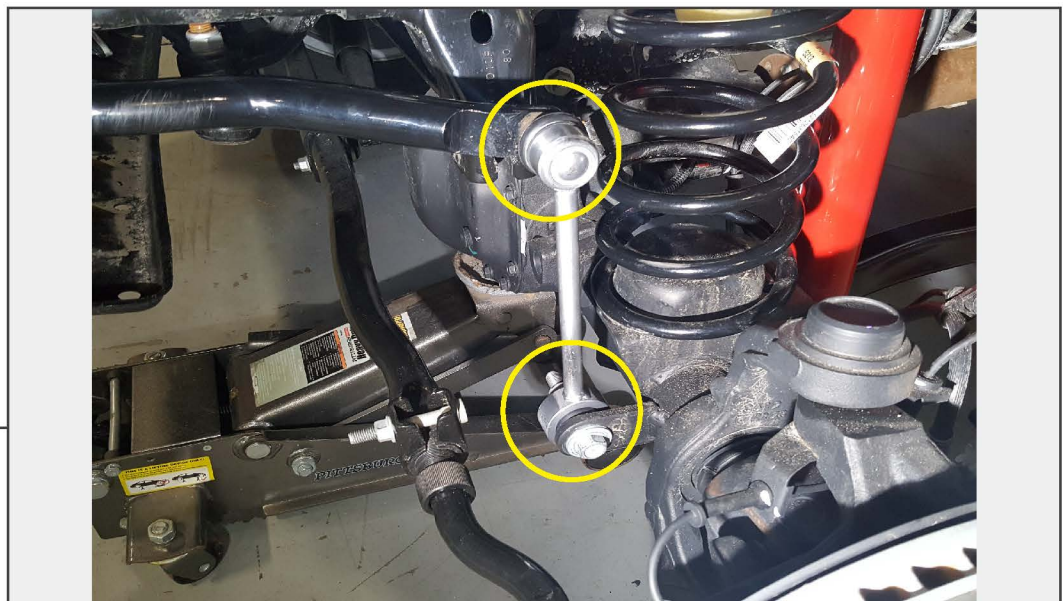
STEP 5



Install the coil spring spacer over the factory bump stop on the vehicle, ensuring the spacer lip is facing downwards. Install the coil spring with the original coil spring isolator on the top of the spring. Repeat this procedure to the opposite side of the vehicle.

Note: Fitting the coil spring into place may require prying downwards on the axle with a pry bar. Ensure to rotate the coil spring until the bottom of the spring is in the dedicated cutout.

STEP 6



Install the new sway bar link to the axle re-using the original hardware. Secure the sway bar link to the sway bar using the provided (1) M12 flat washer and (1) M12 lock nut.

Repeat this procedure to the opposite side of the vehicle.

STEP 7



Re-install the shock absorber to the axle using the original hardware.

Front installation is now complete.

**STEP 8
(REAR)**



Safely lift and support the rear of the vehicle in the air using a jack and jack stands. Remove the rear wheels from the vehicle.

Place a floor jack under the axle with light pressure to prevent tension during disassembly.



STEP 9

Remove (1) brake line mounting bolt on the frame of the vehicle.

Repeat this procedure to the opposite side of the vehicle.



STEP 10

Remove the lower shock absorber bolt from the axle mount. Hardware will be reused.

Repeat this procedure to the opposite side of the vehicle.



STEP 11

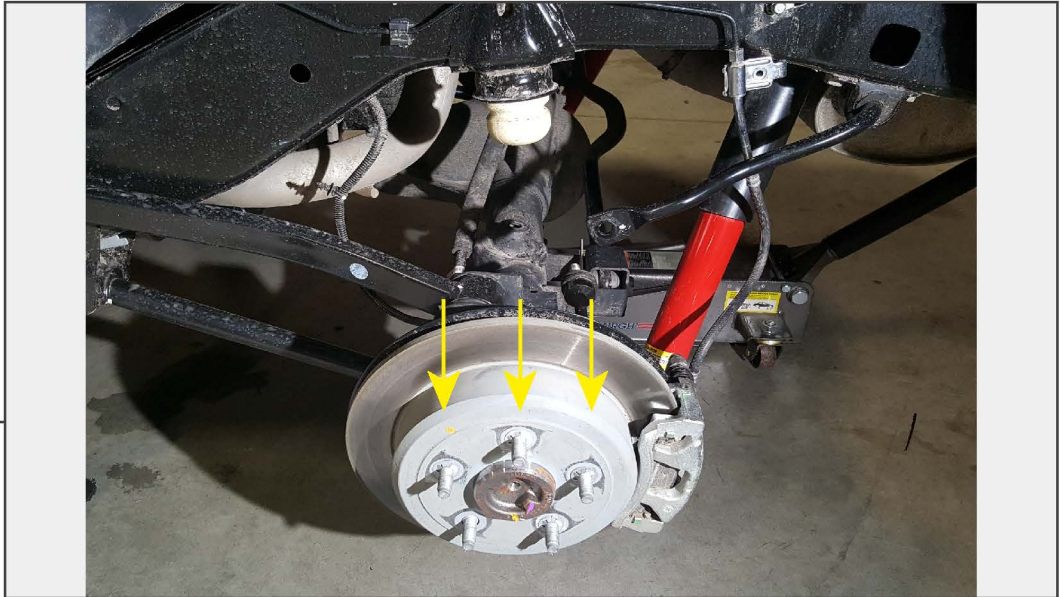
Remove the upper sway bar link nut to separate the sway bar link from the sway bar. Hardware will be reused.

Repeat this procedure to the opposite side of the vehicle.



STEP 12

Remove the wiring clips from the frame rail of the vehicle.



STEP 13

Press downwards on the axle to allow the spring to become loose. Remove the spring and spring isolator from the vehicle. Repeat this procedure to the opposite side of the vehicle.

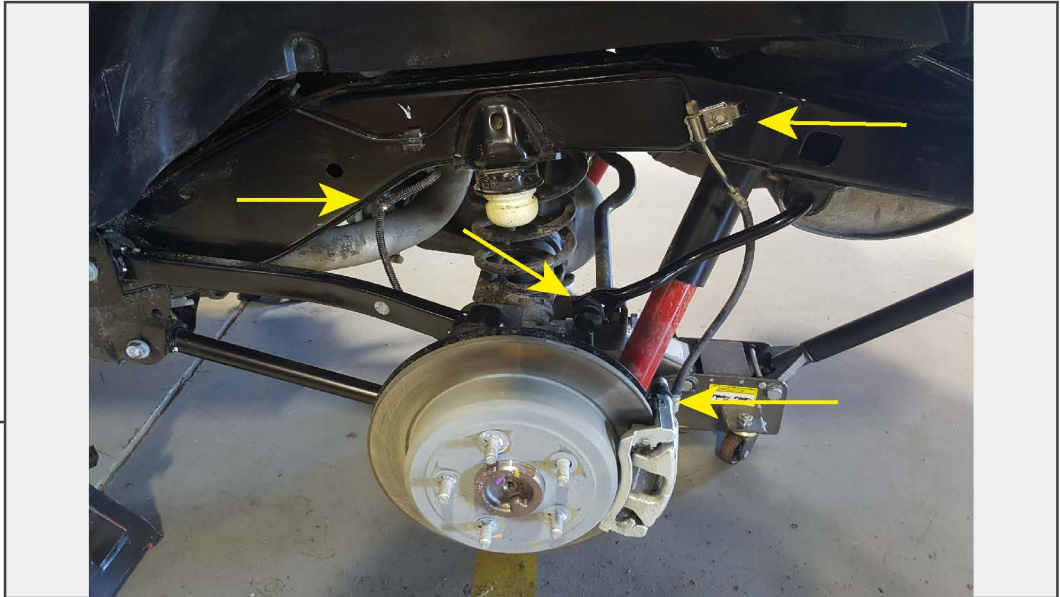
Note: Using a pry bar may be necessary.



STEP 14

With the coil spring isolator remaining installed on the spring, place the spring spacer on top of the spring isolator, ensuring the spacer conical seat is facing downwards. Install the coil spring, isolator, and spring spacer into the vehicle. Repeat this procedure to the opposite side of the vehicle.

Note: Fitting the coil spring into place may require prying downwards on the axle with a pry bar. Ensure to rotate the coil spring until the bottom of the spring is in the dedicated cutout.



STEP 15

Re-install the rear shock absorber to the axle mount using original hardware. Re-install the rear sway bar link to the sway bar reusing original hardware. Re-install the brake line bracket and the wiring harnesses to the frame rail at the original locations.

Repeat this procedure to the opposite side of the vehicle.



STEP 16

Re-install the wheels, then torque to OEM specifications while the vehicle is on the ground.

Installation is now complete.