



VISION SERIES FRONT BUMPER WITH LED LIGHTS

(2007-2018 WRANGLER JK)

INSTALLATION INSTRUCTIONS

CONTENTS

- (1) Front Bumper
- (1) Hardware Kit
- (1) Light Bar
- (2) Square LED Lights
- (2) Horizontal Lights
- (2) Standalone Wire Harness
- (1) Splice-In Harness

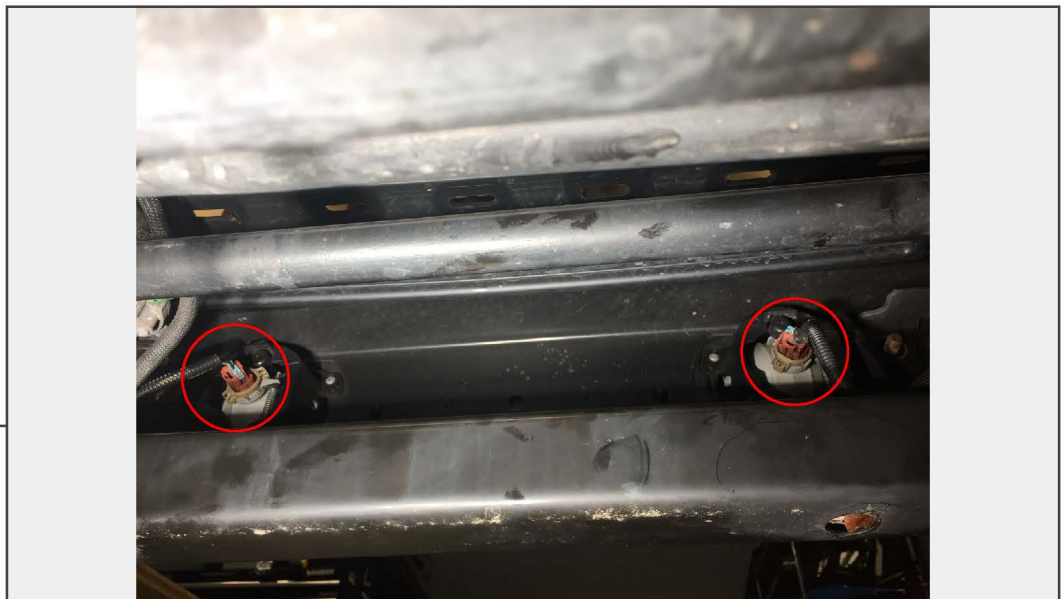
TOOLS REQUIRED

- Flathead Scredriver
- Socket/Wrench Set
- Wire Cutters/Crimpers

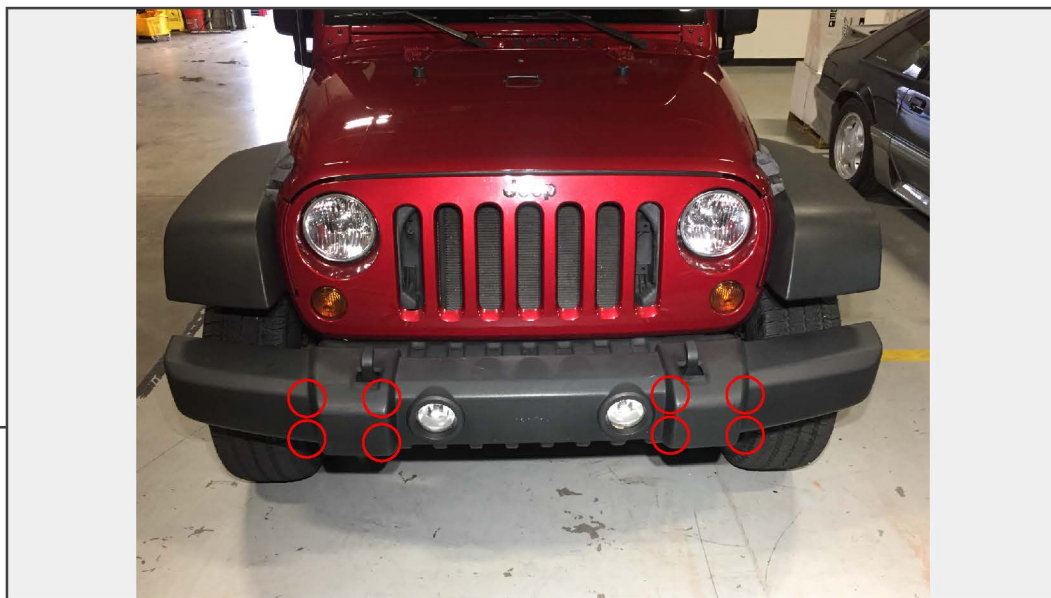
SKU # J107019

STEP 1

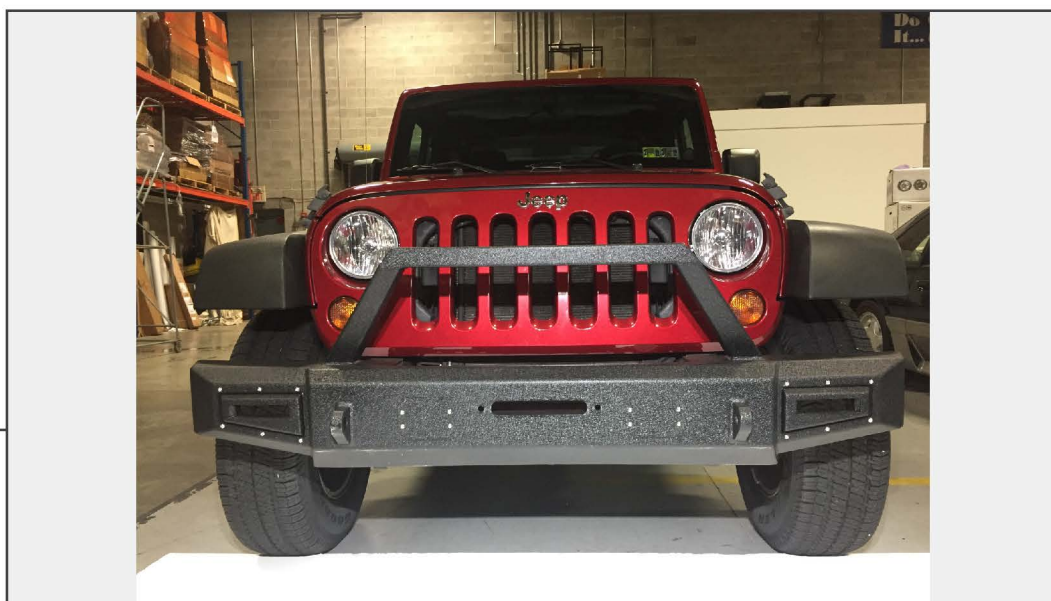
Remove the (6) plastic push pins securing the factory splash shield to the vehicle. (4) Across the front edge, (2) on the rear edge.

STEP 2

Remove the factory fog light connectors and free the fog light wiring loom from the bumper. Secure the factory fog light wiring harness out of the way.

STEP 3

From under the vehicle access and remove the (8) 18mm nuts securing the factory bumper to the vehicle.

STEP 4

Install the bumper using the factory reinforcement tabs and the supplied hardware (4) nuts and (4) bolts.

STEP 5

Remove the center block off plates to install the flush mounted bumper lights. The Allen bolts will be reused.

STEP 6

Install the horizontal LED bumper lights. **Note: The mounting tabs may need to be manipulated slightly so that the light can slide in easier.

STEP 7

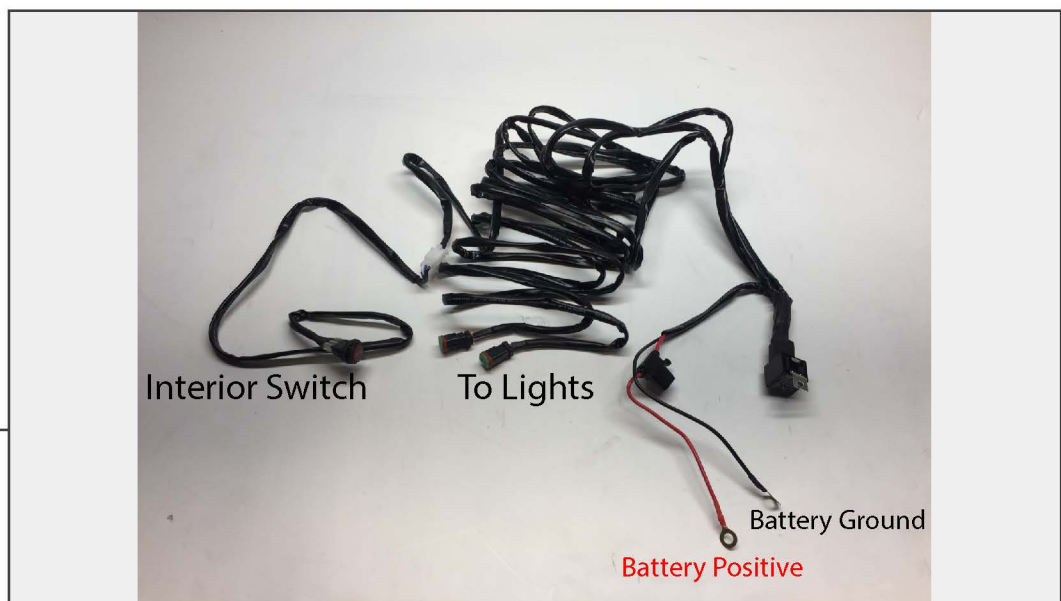
Install the LED light bar using the provided hardware.

STEP 8

Reinstall the filler plate if a winch is not going to be used.

STEP 9

The bumper mounted outer horizontal LED lights can be wired to the factory fog light switch using the preexisting fog light wiring harness. The black lead off of the LED light will get connected to a ground, the gray lead will be wired to switched 12v+. With the fog light switch turned on, use a test light determine which wire is the 12v+ and which is the ground. Using wire connectors, splice or crimp the LED wiring leads to the appropriate fog light wiring. Test the lights before taping/shrink wrapping the connections. Secure any loose wires out of the way.

STEP 10

Using the supplied LED wiring harnesses, connect the red eyelet to the positive battery terminal, and the black eyelet to the negative terminal. Run the on/off switch to the passenger compartment using a suitable body grommet or by drilling your own hole. Zip tie the excess wire away from heat and moving parts. Connect the plugs to the supplied LED lights. **Note: (2) Separate harnesses will be used. (1) Harness will be used for the light bar. (1) Will be used for the square bumper mount LEDs.