

**Step 8**

Once installed along the top edge, pull the front corner over the front post of the door frame.



Fig. 8

**Step 9**

Lift the velcro flap as shown in fig. 9. Wrap it over the cross bar of the frame and close tightly.

**Note:** Do not fasten the bottom hook and loop until the upper door is in place on the vehicle.

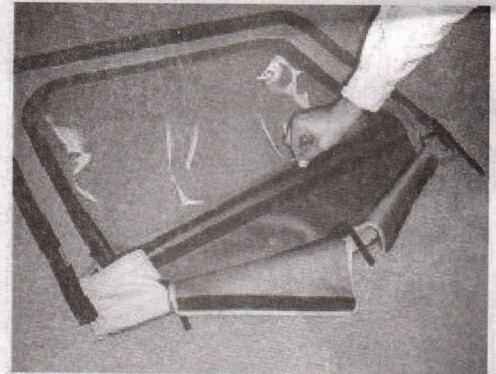


Fig. 9

**Step 10**

Install the upper door onto the vehicle door. Insert the bottom flap of the door fabric into the channel on the vehicle door.



Fig. 10

**Step 11**

Now tighten the bottom hook and loop to achieve the desired fabric to frame to retaining strip tension.

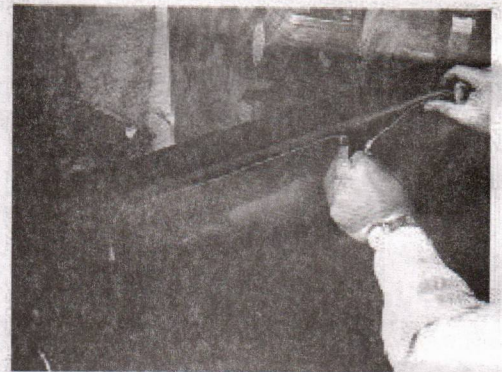


Fig. 11

Rampage Products, LLC  
22420 Temescal Canyon Rd Unit C Corona, CA 92883  
Phone: (951) 277-4949 Fax: (951) 277-2295

Made in China  
Page 3 of 3

#### Step 4

Fasten the snaps along the track above the doors. The studs should slide to the proper location for the snap. (Fig 4)

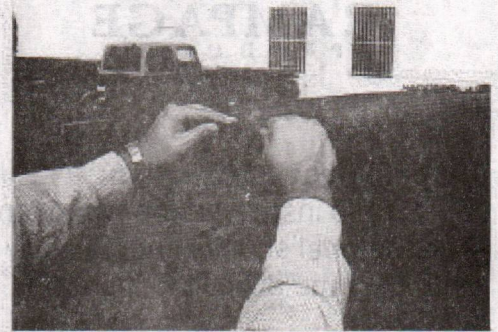


Fig 4

#### Step 5

Install the rear corners of the top into the retainer channel. Then the rear and quarter window sections.

**Note:** If it is cold (below 70°F) or this is first installation it may be necessary to slide the rear support bow slightly forward to install the corners.

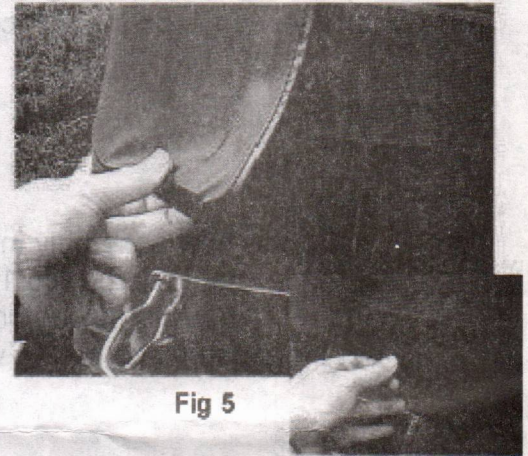


Fig 5

#### Step 6

Now slide the rear support bow into position on the belt rail and push the support bow up into position (fig 6).

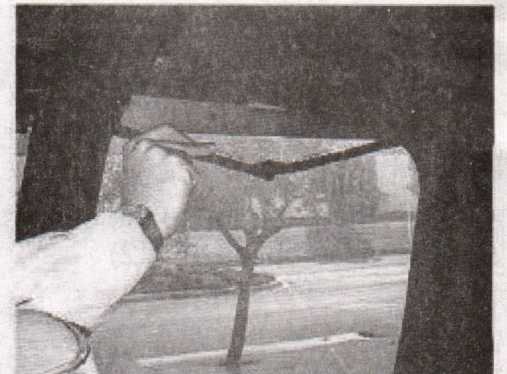
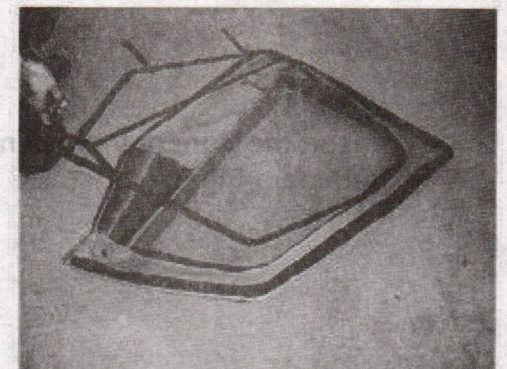


Fig 6

#### Step 7

Install the window frame into the door skin, begin with the corner as shown in fig. 7.





## Soft Top, OEM Replacement, w/ Door Skins

1988-95 Jeep Wrangler

### To help ease installation:

Be sure to install the top when temperatures are above 70°F. The material shrinks substantially at lower temperatures and may become difficult to install.

The top may seem wrinkled when first installed, this is caused by the fabric becoming wrinkled in shipping. It will relax after a few days on the vehicle.

### Step 1

Install the bow assembly into the vehicle with the spreader bar lowered (fig 1) and the with the front and rear support row feet in belt rail notches. Now set the top in place on the vehicle.

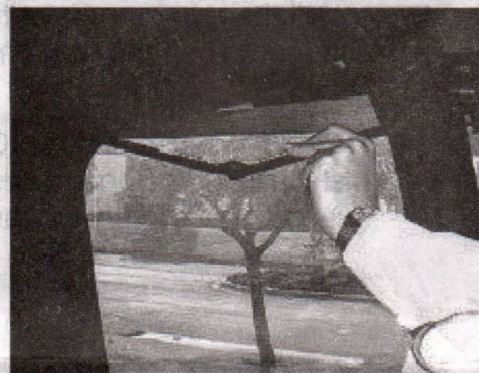


Fig 1

### Step 2

Snap the top to the center and rear bow assemblies. (Fig 2)



Fig 2

### Step 3

Insert the front of the top into the windshield retainer. (Fig 3)

