



FULL WIDTH FRONT BUMPER

(2007-2018 WRANGLER JK)

(2018-2025+ WRANGLER JL)

(2020-2025+ GLADIATOR JT)

INSTALLATION INSTRUCTIONS

CONTENTS

- (1) Extreme HD Front Bumper
- (2) 3/4" D-Ring Shackles
- (4) M12x1.75 Stud Plates
- (8) Plastic Stud Holders
- (2) Fog Light Brackets
- (1) 2.5mm Allen Key
- (8) M12x1.75 Nuts
- (8) M12 Lock Washers
- (8) M12 Flat Washers
- (12) M4x0.7 x 15mm Allen Bolts
- (12) M4 Lock Washers
- (20) M4 Flat Washers
- (8) M4 Nuts

TOOLS REQUIRED

- Flathead Screwdriver
- Phillips Screwdriver
- 13mm-19mm Sockets
- 13mm-19mm Wrenches
- Socket Wrench
- 3mm Allen Wrench

STEP 1

Using a flat head screwdriver or trim panel removal tool, remove the 6 pins holding the splash guard onto the vehicle.

STEP 2

Next, unplug the factory fog lights and remove the (8) 19mm nuts holding the front bumper to the frame of the vehicle. Remove bumper.

STEP 3

Using a flat head screwdriver, remove the 2 push pins holding the top cover onto the vehicle.

STEP 4

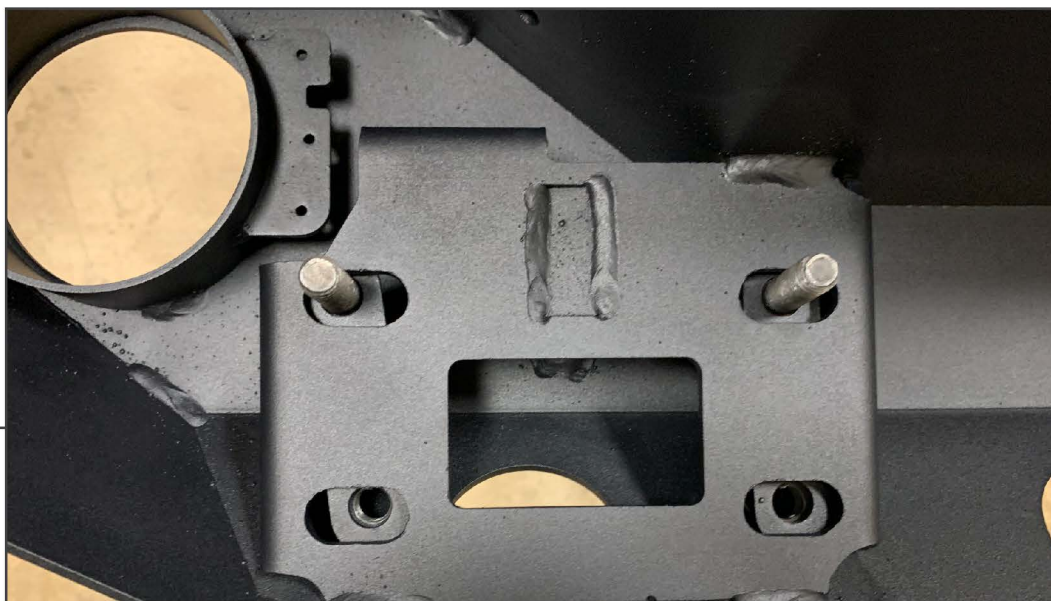
Remove the fog lights by removing the (4) Phillips screws on each light.

STEP 5

Using (2) M4 bolts, (2) M4 lock washers, and (2) M4 flat washers, attach the fog light bracket to the bumper. Repeat on both sides of the bumper.

STEP 6

Using (4) M4 Allen bolts, (4) M4 lock washers, (4) M4 flat washers, (4) M4 nuts, attach the fog light to the bumper and bracket installed in Step 5. Repeat for both fog lights.

STEP 7

Place the nut/bolt plates behind the bumper mounting pad. This will allow for minor adjustment side to side.

STEP 8

JK: The fog light harness will need to be extended. Cut and splice the wires to reach the new fog light locations.

JL/JT: Remove (8) 15mm nuts and (24) 7mm screws to disassemble the original vehicle rear bumper, and remove the fog light harness from the original bumper and fit to the vehicle.

STEP 9

With help, carefully install the bumper. Secure the bumper to the vehicle using the provided M12 hardware. Reconnect the fog lights (extending the wiring may be required). Installation is now complete.

STEP 10

Install the D-rings to complete the installation. Winch sold separately.