



FITTING INSTRUCTIONS

Part Number: **5650360 & 5650370**

Product

Description: **JK REAR BAR ONLY 2014/-**

Suited to

vehicle/s: **JK JEEP WRANGLER SWB & LWB**

WARNING

REGARDING VEHICLES EQUIPPED WITH SRS AIRBAG:

When installed in accordance with these instructions, the front protection bar does not affect operation of the SRS airbag.

ALSO, NOTE THE FOLLOWING:

- ◆ This product must be installed exactly as per these instructions using only the hardware supplied.
- ◆ In the event of damage to any bull bar component, contact your nearest authorised ARB stockist. Repairs or modifications to the impact absorption system must not be attempted.
- ◆ Do not use this product for any vehicle make or model, other than those specified by ARB.
- ◆ Do not remove labels from this bull bar.
- ◆ This product or its fixing must not be modified in any way.
- ◆ The installation of this product may require the use of specialized tools and/or techniques
- ◆ It is recommended that this product is only installed by trained personnel
- ◆ These instructions are correct as at the publication date. ARB Corporation Ltd. cannot be held responsible for the impact of any changes subsequently made by the vehicle manufacturer
- ◆ During installation, it is the duty of the installer to check correct operation/clearances of all components
- ◆ Work safely at all times
- ◆ Unless otherwise instructed, tighten fasteners to specified torque

ARB 4x4 ACCESSORIES

Corporate Head Office

42-44 Garden St
Kilsyth, Victoria
AUSTRALIA 3137

Tel: +61 (3) 9761 6622
Fax: +61 (3) 9761 6807

Australian enquiries
North & South American enquiries
Other international enquiries

sales@arb.com.au
sales@arbusa.com
exports@arb.com.au

www.arb.com.au

GENERAL CARE AND MAINTENANCE

By choosing an ARB Bar, you have bought a product that is one of the most sought after 4WD products in the world. Your bar is a properly engineered, reliable, quality accessory that represents excellent value. To keep your bar in original condition it is important to care and maintain it following these recommendations:



- Prior to exposure to the weather your bar should be treated to a Canuba based polish on all exposed surfaces. It is recommended that this is performed on a six monthly basis or following exposure to salt, mud, sand or other contaminants.
- As part of any Pre Trip Preparation, or on an annual basis, it is recommended that a thorough visual inspection of the bar is carried out, making sure that all bolts and other components are torqued to the correct specification. Also check that all wiring sheaths, connectors, and fittings are free of damage. Replace any components as necessary. This service can be performed by your local authorized ARB Stockist.

FITTING REQUIREMENTS

REQUIRED TOOLS FOR FITMENT OF PRODUCT:

BASIC TOOL KIT	
DRILL & DRILL BITS	
AIR HACKSAW/ JIGSAW	

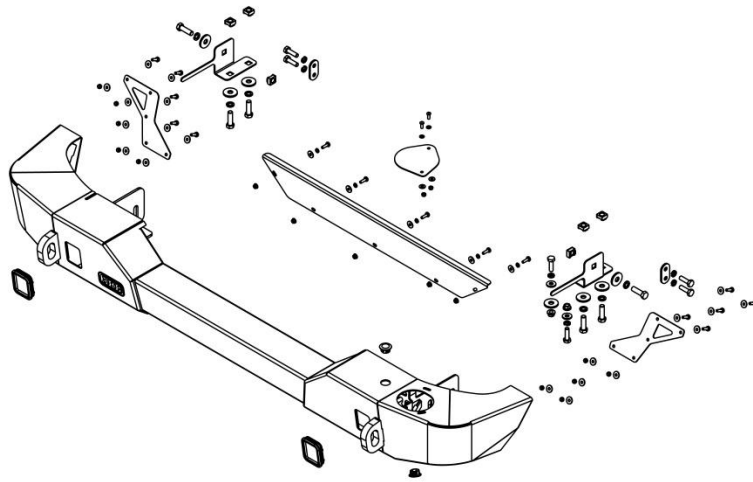
HAVE AVAILABLE THESE SAFETY ITEMS WHEN FITTING PRODUCT:

Protective eyewear		Hearing protection	
--------------------	---	--------------------	---

NOTE: 'WARNING' notes in the fitting procedure relate to OHS situations, where to avoid a potentially hazardous situation it is suggested that protective safety gear be worn or a safe work procedure be employed. If these notes and warnings are not heeded, injury may result.

FASTENER TORQUE SETTINGS:

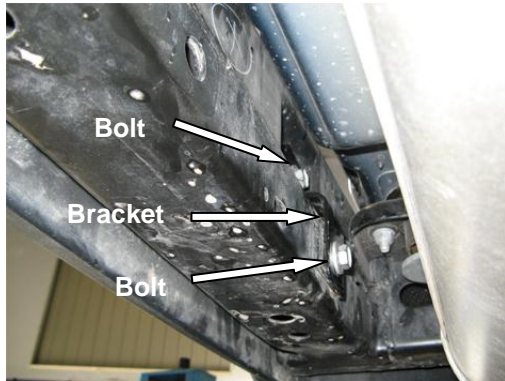
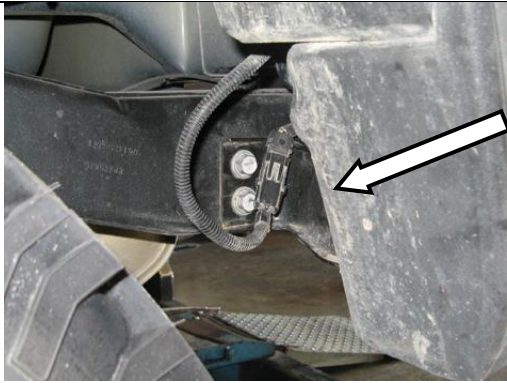
SIZE	Torque Nm	Torque lbft
M6	9	7
M8	22	16
M10	44	32
M12	77	57



PARTS LISTING			
APPLICATION.	PART NO.	QTY	DESCRIPTION
CENTRE PANEL TO REAR BAR	6522934	1	COVER PANEL
	6151213	5	BOLT M6 X 20 BLACK
	6151173	5	NUT FLANGE M6 BLACK
	4581082	5	WASHER FLAT M6 BLACK
	4581287	5	WASHER SPRING M6 BLACK
CARRIER COVER PANEL TO REAR BAR	3194588	1	PLATE COVER JK RB 12/-
	4581072	2	WASHER FLAT, M6 X 16 X 1.2 ZP
	4581304	2	WASHER FLAT, M6 SS
	6151162	2	NUT HEX M6 X 1.0 NYLOC TZP480
	6151256	2	SCREW BTN HD M6 X 16 SS
REAR BAR TO VEHICLE	4654018	1	REAR BAR ASSEMBLY
	3758217R	1	CAGE NUT PLATE
	3658217L	1	CAGE NUT PLATE
	6151255	6	BOLT M12 X 40
	6151306	6	CAGE NUT M12
	6151321	2	NUT FLANGE M10 X 1.5 ZP
	4581064	6	WASHER SPRING M12
	4581007	7	WASHER FLAT ½
	4581040	2	WASHER FLAT M10 X 25 X 3 ZP
	6151204	6	BOLT M10 X 35
	4581048	6	WASHER SPRING M10
	3199927	2	WASHER PLATE
	3163009	2	PLUGS HIGH LIFT JACK
	3163074	2	PLUG BULL-BAR
	MUD FLAPS TO VEHICLE	3194254	2
6151213		10	BOLT M6 X 20 BLACK
6151223		10	NUT M6 NYLOC BLACK
4581082		20	WASHER FLAT M6 BLACK

OPTIONAL PARTS: 5750320 TYRE CARRIER
5750310 LICENSE PLATE ASSY
3500370 ARB MUDFLAP (x2)

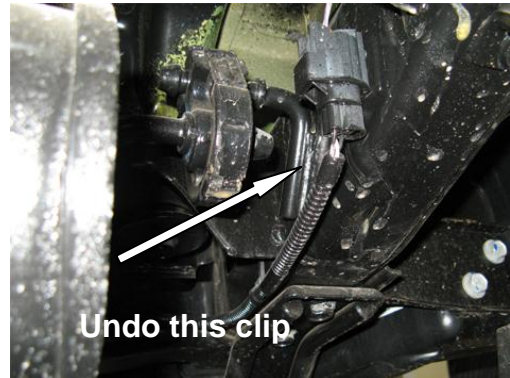
FITTING PROCEDURE



1. Firstly remove the spare tyre from the rear door.

To remove the bar, remove the 4 bolts (2 each side) found either side of the vehicle. Then remove the 4 bolts and 2 brackets found on the inside at the top of the bar. Retain at least 4 of these bolts for later use.

Also undo the connector for the fog light loom (if fitted) located on the chassis next to the muffler, and also remove the cable clips holding the loom to the chassis.



2. The bar can now be slid off rearwards.
Note: If fitting a factory tow bar, fit now whilst bar is off.



3. The plastic inner guards can now be trimmed. Measure 60mm up from the bottom edge of the inner guard and draw a horizontal line as shown.

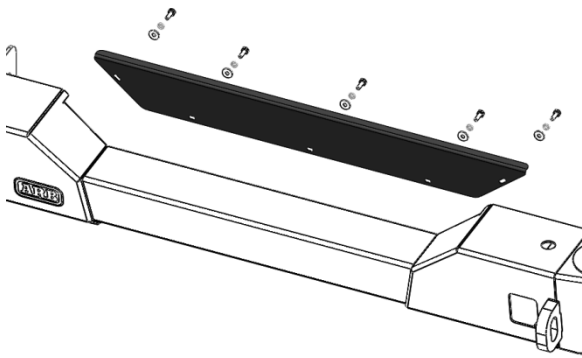
FITTING PROCEDURE



4. Cut along the marked line being careful not to damage the flared guard.



Warning: Cutting operations can result in flying metal debris, safety glasses should be worn.

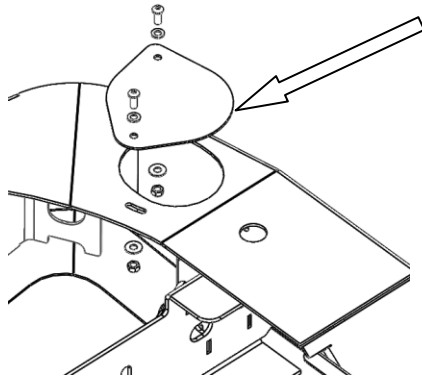


5. Fit centre cover panel to bar using 5 x M6 x 20 bolts, spring washers, flat washers and flange nuts. Place bolt head towards the front of the vehicle.

Torque to specification.



M6 - 9 Nm.

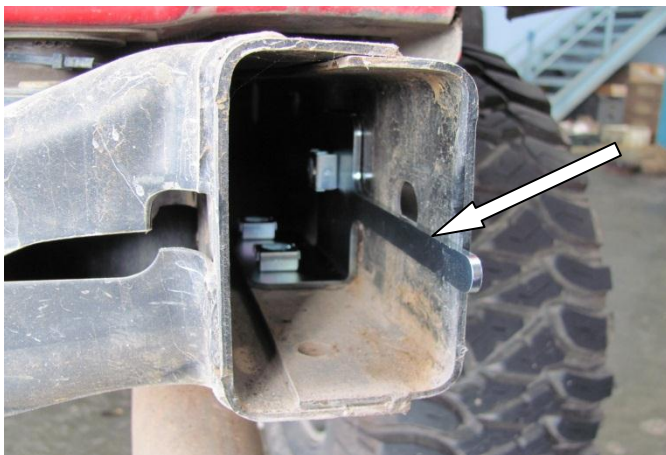


6. Fit carrier cover panel to bar using 2 x M6 x 16 button head SS screws, SS flat washers, ZP flat washers and nyloc nuts. Place Stainless Steel hardware on top of the cover plate as shown.

Torque to specification.



M6 - 9 Nm.





7. Place M12 cage nuts in cage nut plate and slide into chassis rail so bottom two cage nuts line up with the two forward most holes on underside of chassis. Check that bottom holes line up with cage nuts correctly. If the chassis holes are slightly off use a die-grinder to correct. RH side shown, repeat for left hand side.

NOTE: It has been noted on some models that the bottom chassis rails holes may only appear on one side. If this is the case place bar on vehicle and use mount brackets as a template for drilling.

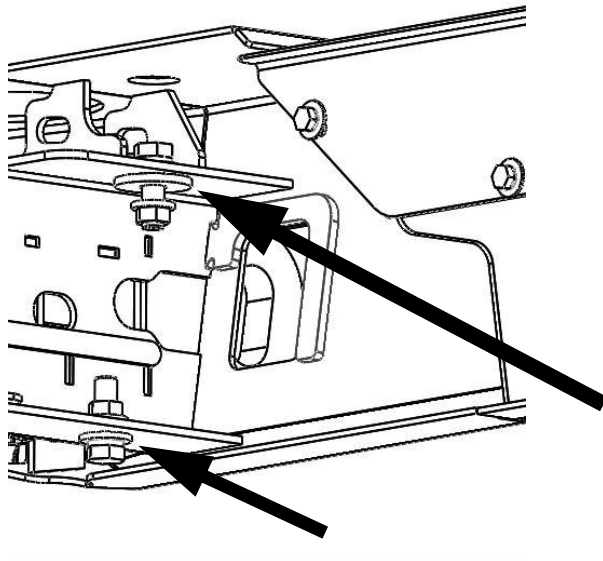


8. Place bar onto chassis and secure to captive nuts using M10 x 50mm bolts, spring washers and washer plates. Leave bolts finger tight. Secure all other points using M12 x 40mm bolts, spring washers and flat washers. Torque to specification.

 M10 - 44 Nm.

 M12 - 77 Nm.

NOTE: Due to variations in some chassis the bar may be tight over the chassis rails. If this is the case use a rag and rubber mallet on the recovery eyes to drive the bar home.

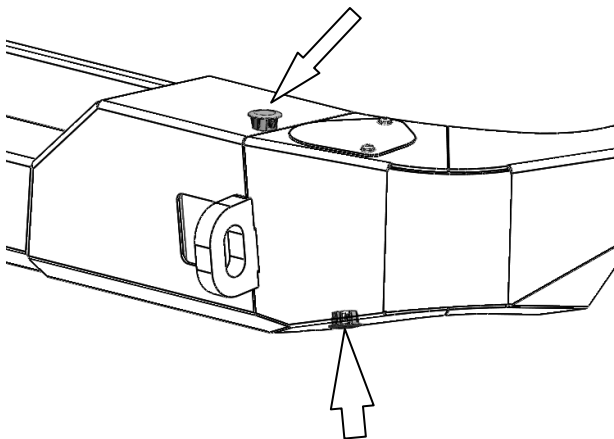


9. Drill pinning bolt using a DIA 10.0 drill bit. Clean away any debris and paint bare metal using a rust preventative coating.




Warning: Cutting operations can result in flying metal debris, safety glasses should be worn.

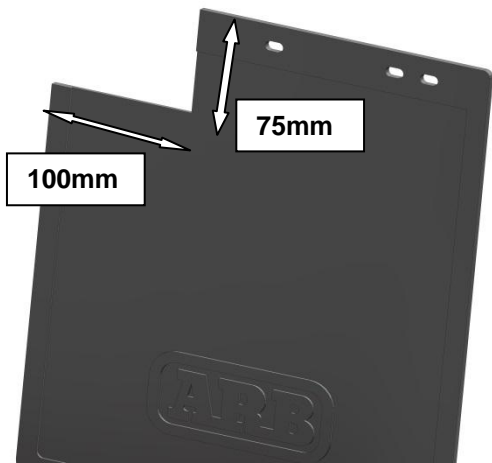
10. Repeat step on lower side of chassis.
 11. Place a 1/2" x 4 mm flat washer between the top of the chassis and the bar.
 12. Fit M10 x 1.5 x 35 bolt, spring, flat washer and a flange nut as shown holes as shown.



13. Torque bolts fitted in previous step to specification.

 M10 - 44 Nm.

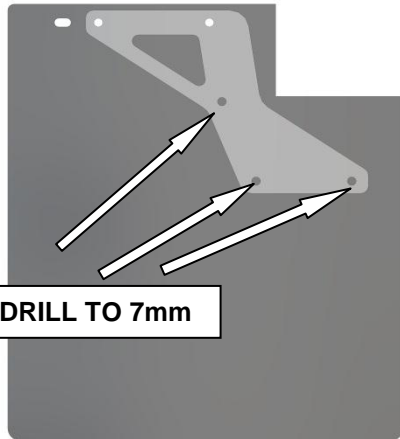
14. Insert plugs into access holes as shown.



15. **IF FITTING MUD FLAPS (ARB SHOWN part no: 3500370).** Cut a section out of each opposite corner of the mud flap as shown.



Warning: Cutting operations can result in flying metal debris, safety glasses should be worn.



16. Place mounting panel on flap as shown lining up the two inner mounting holes on the mud flap. Mark and drill holes as shown to 7mm. Once complete place on vehicle and secure using black M6 hardware.

Torque to specification.

 M6 - 9 Nm.



Warning: Cutting operations can result in flying metal debris, safety glasses should be worn.

FITTED PRODUCT



**Tyre carrier (5750320) shown also.*