



# HD REAR BUMPER WITH TIRE CARRIER

(2021-2024+ BRONCO)

## INSTALLATION INSTRUCTIONS

### CONTENTS

- (1) Rear Bumper
- (2) Bumper Mounting Nut Plates
- (2) 3/4 D-Rings
- (1) Tire Carrier Post
- (2) Upper Bumper Caps
- (2) Lower Bumper Caps
- (4) M12x1.75 x 45mm Bolts
- (4) M12 Lock Washers
- (4) M12 Flat Washers
- (4) M10x1.50 x 35mm Bolts
- (4) M10 Lock Washers
- (4) M10 Flat Washers
- (10) M6x1.00 x 15mm Combo Allen Bolts
- (4) M6 Flange Nuts
- (4) Proximity Sensor Install Kits
- (10) Cable Ties
- (1) License Plate Lamp Harness
- (1) Tailgate Bracket
- (1) Third Brake Light Bracket
- (1) Camera Retaining Bracket
- (1) Camera Housing Bracket
- (1) License Plate Bracket
- (1) Tire Carrier Post Washer
- (1) Spare Tire Extension Bracket
- (1) Spare Tire Mount
- (1) Double Heim Joint
- (2) Camera Retaining Brackets
- (2) Camera Extension Harnesses
- (1) Upper Tire Carrier Bearing
- (1) Lower Tire Carrier Bearing
- (2) Tire Carrier Washers/Shims
- (1) Tire Carrier Cap
- (1) Castle Nut
- (1) Cotter Pin
- (4) M12x1.75 x 70mm Bolts
- (4) M12x1.75 x 70mm Shoulder Bolts
- (4) M12x1.75 x 50mm Bolts
- (1) M12x1.75 x 30mm Bolt
- (4) M12 Lock Washers
- (16) M12 Flat Washers
- (6) M12 Lock Nuts
- (2) M10x1.50 x 20mm Allen Bolts
- (2) M10 Lock Washers
- (2) M10 Flat Washers
- (2) M8x1.25 x 20mm Allen Bolts
- (2) M8 Lock Washers
- (2) M8 Flat Washers
- (1) M8x1.25 Allen Set Screw
- (4) M6x1.00 x 25mm Allen Bolts
- (2) M6 Flat Washers
- (2) M6 Flange Nuts
- (2) M6 Lock Nuts
- (2) M6 x1.00 x 20mm Tapered Allen Bolts
- (1) M4x0.7 Phillips Bolt
- (2) M3 x 15mm Phillips Bolts
- (2) M3 Lock Washers
- (2) M3 Flat Washers
- (2) M3 Nuts
- (1) 4mm Allen Key
- (1) 5mm Allen Key
- (1) 6mm Allen Key

### TOOLS REQUIRED

- 10mm-19mm Socket/Wrench
- 35mm Socket
- Ratchet
- Panel Removal Tool
- Rubber Hammer
- Pliers

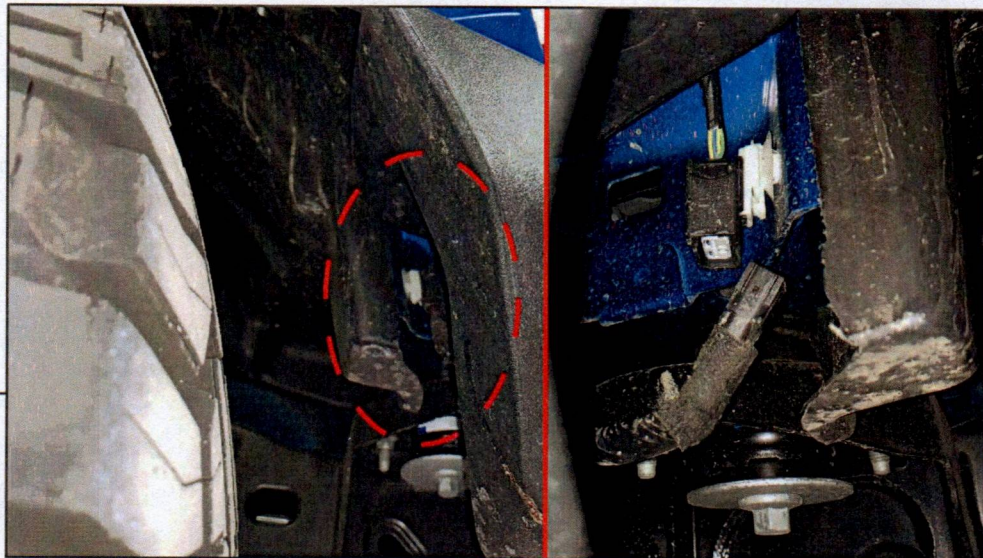
SKU # FB49721;FB50257  
Edited: 01/11/2024

# BARRICADE



## STEP 1

Remove the (3) lug nuts from the spare tire and remove the spare tire from the vehicle.



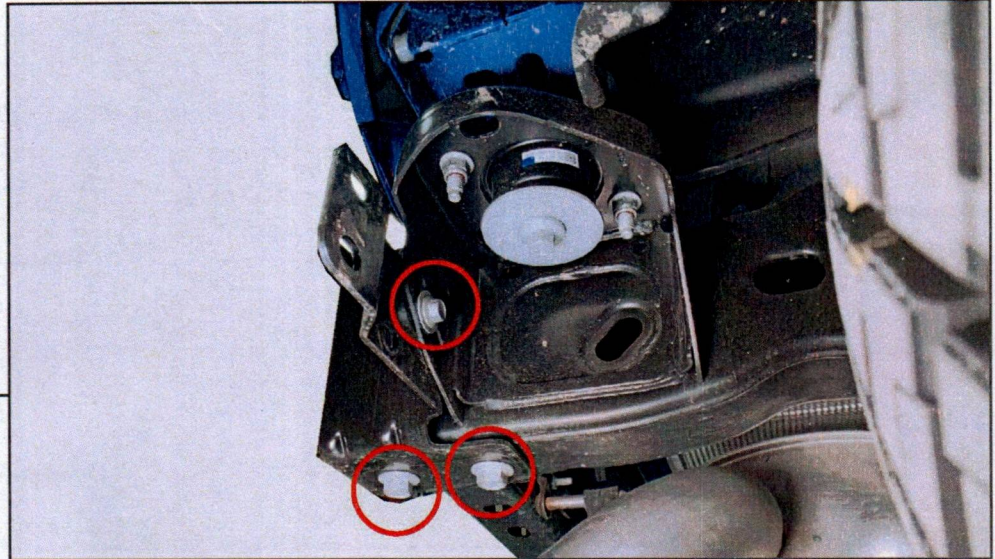
## STEP 2

Behind each rear wheel, disconnect (1) electrical connector per side to disconnect the rear backup sensors and the license plate lamp from the vehicle harness.

## **BARRICADE**

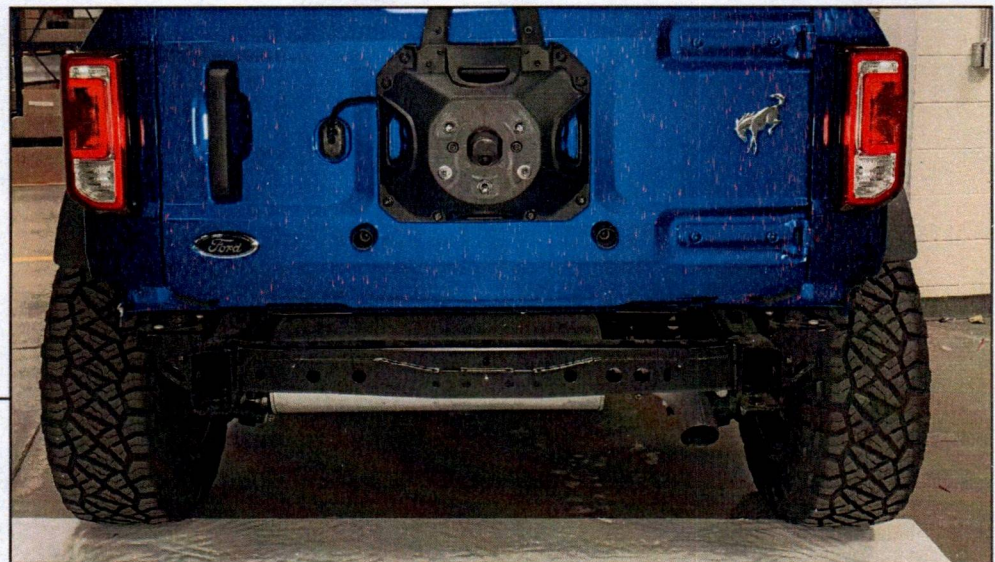
---

### **STEP 3**



Along each rear frame rail, remove (1) 13mm bolt and (2) 18mm bolts from each side to remove the original bumper mounting brackets and tow hook from the vehicle.

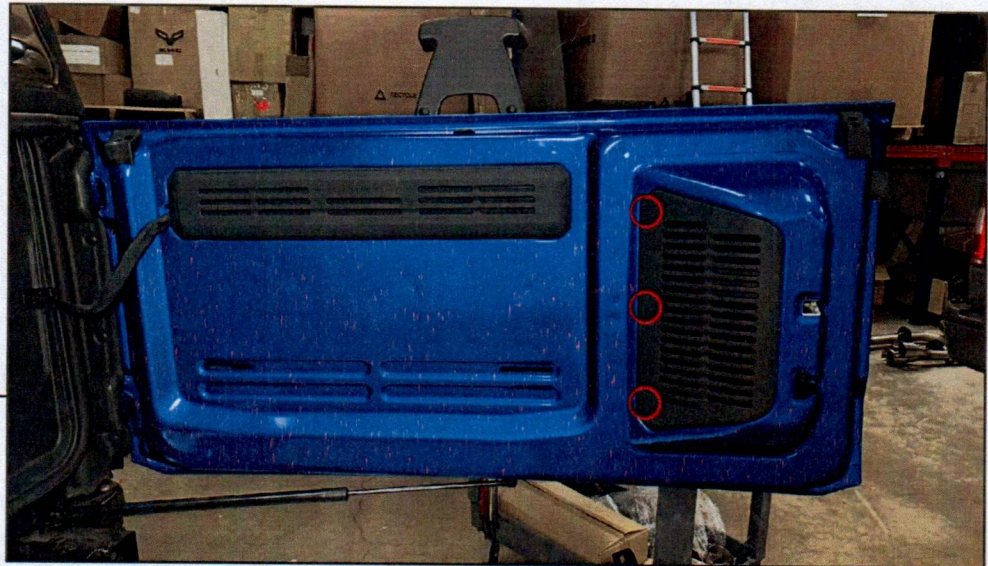
### **STEP 4**



Pull the original bumper from the vehicle and set aside for disassembly later.

## **BARRICADE**

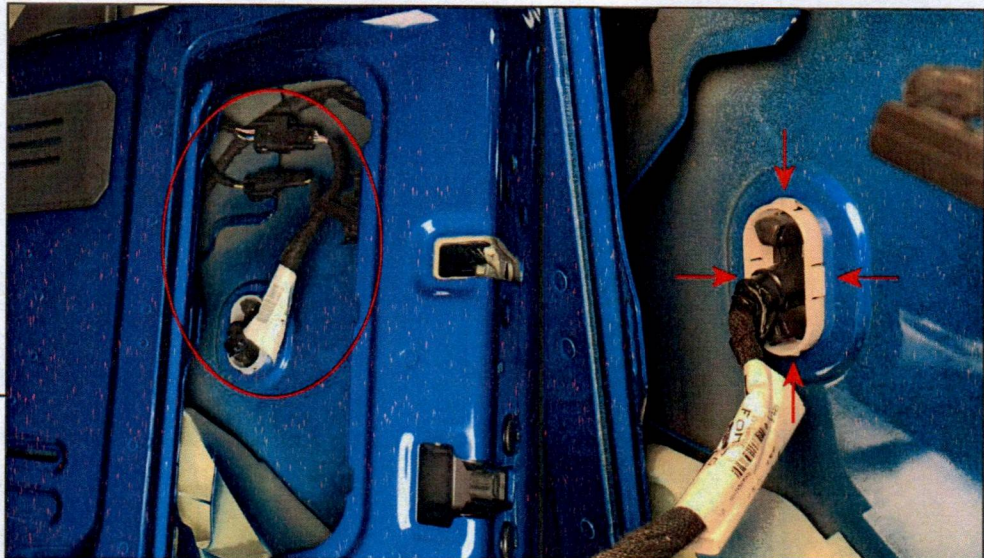
---



---

### **STEP 5**

Using a plastic panel removal tool, remove the tailgate panel by dislodging (3) metal clips. Set the panel aside.



---

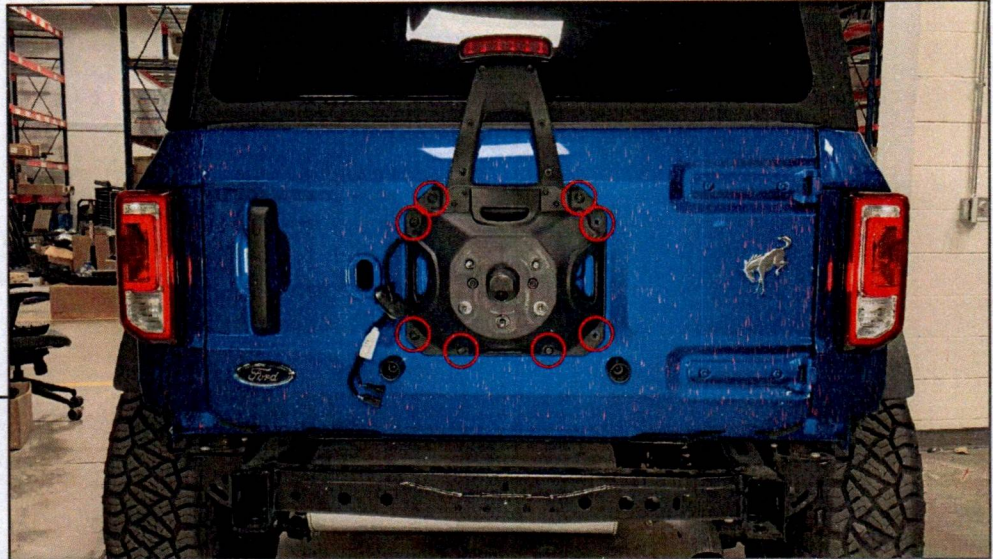
### **STEP 6**

Unplug the electrical connectors attached to the harness leading to the outside of the tailgate.  
Press the (4) grommet tabs to remove the wiring harness grommet through the face of the tailgate.

## BARRICADE

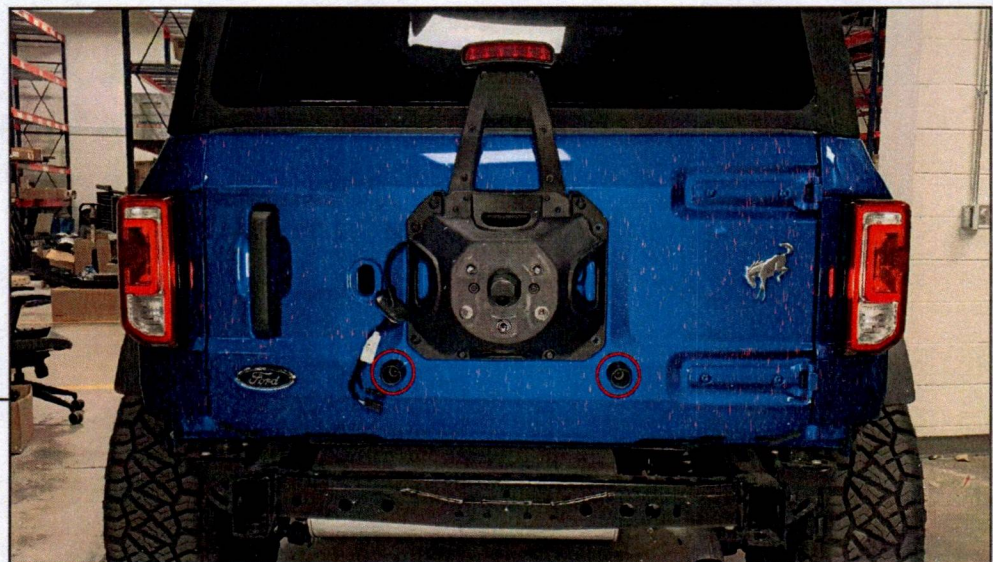
---

### STEP 7



Remove (8) 13mm bolts from the tire carrier assembly. Set the tire carrier aside for disassembly later.

### STEP 8



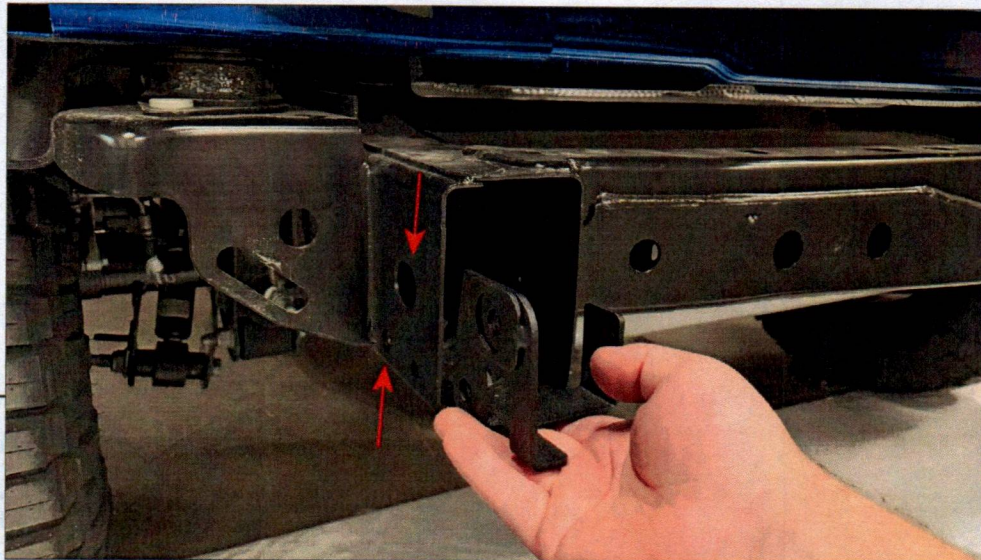
Remove the (2) tire bumpers from the tailgate by removing the retaining clip in the center of each bumper.

# BARRICADE



## STEP 9

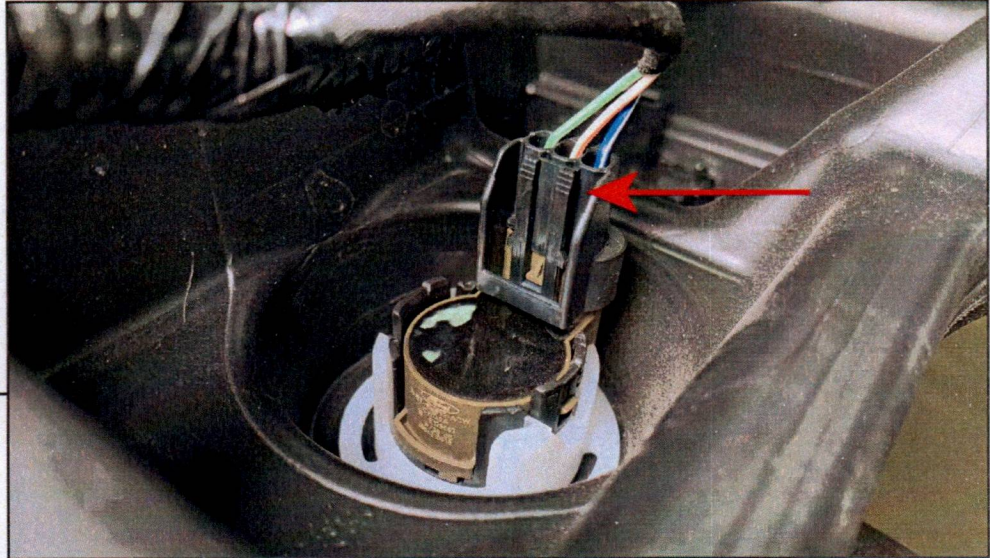
Install the included tailgate bracket to the vehicle using the original tire carrier bolts. Tighten all hardware evenly until secure.



## STEP 10

Fit the included bumper brackets into the vehicle frame rail on each side of the vehicle to align with the vehicle pre-drilled frame holes.

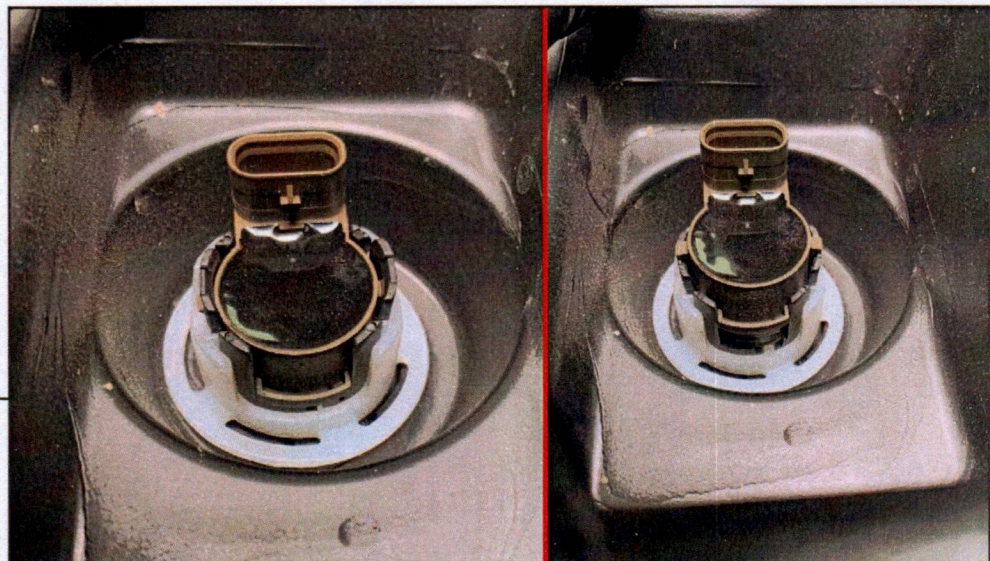
**STEP 11  
SENSOR  
REMOVAL**



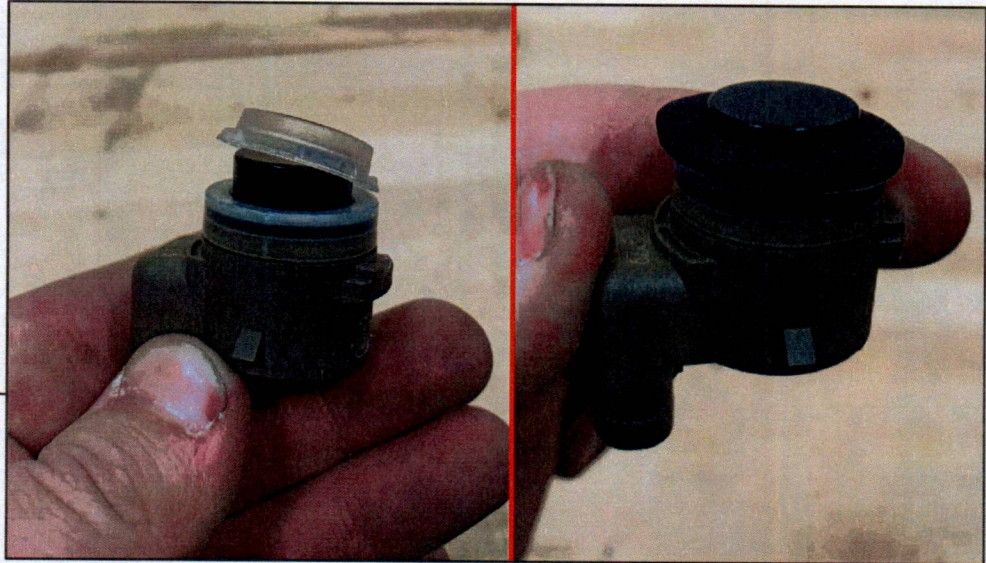
Optional: If equipped with bumper sensors, unplug the sensors by pressing the connector tab inwards while pulling up. Disconnect the wiring harness retaining clips from the bumper using a plastic panel removal tool and remove the harness.

For vehicles without proximity sensors, skip to Step 17.

**STEP 12  
SENSOR  
REMOVAL**

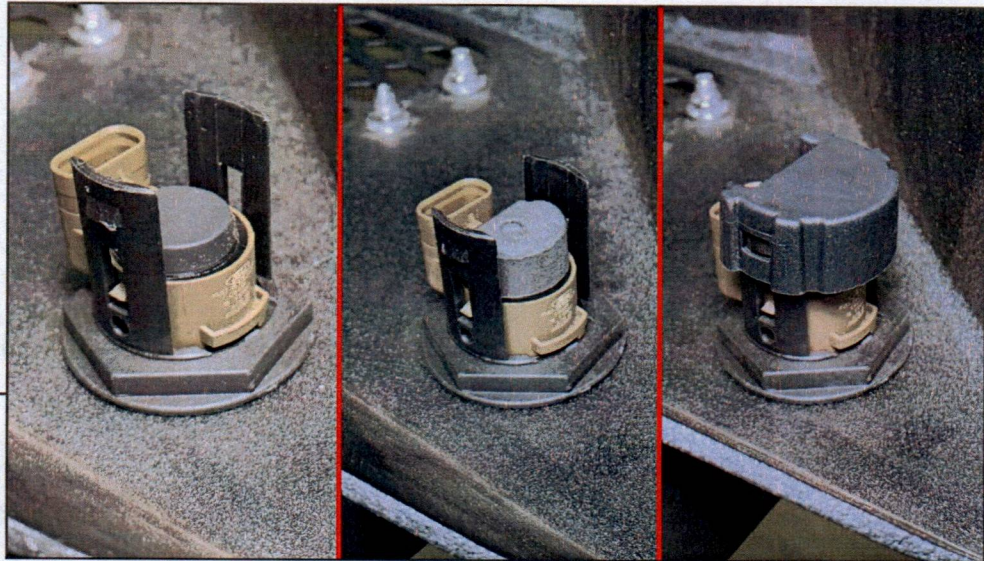


Remove the sensors from the bumper by using a small flat head screwdriver or pick to gently pry back the mounting tabs.



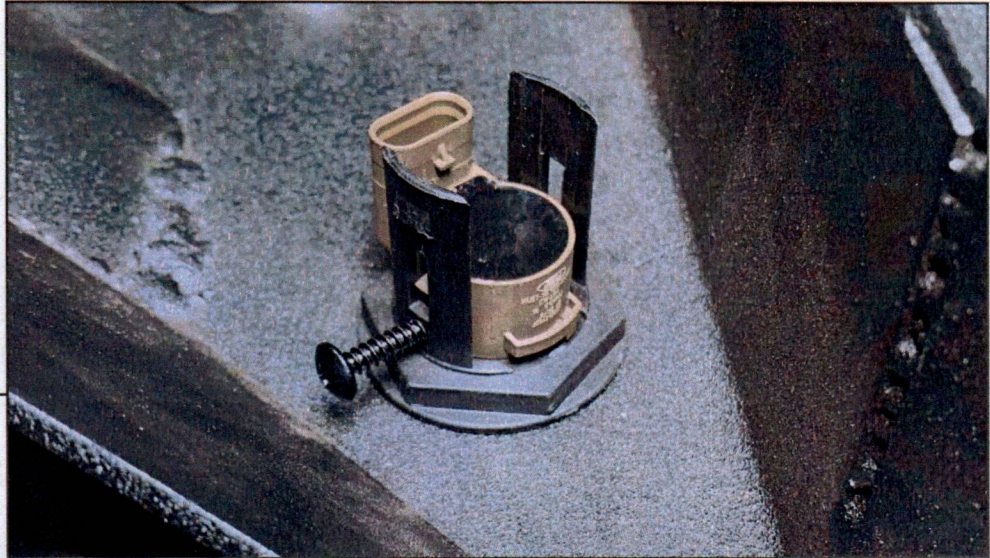
**STEP 13  
SENSOR  
REMOVAL**

Remove the rubber gasket from around the sensor. Install the provided foam ring gasket around the sensor.



**STEP 14  
INSTALLATION  
(OPTION 1)**

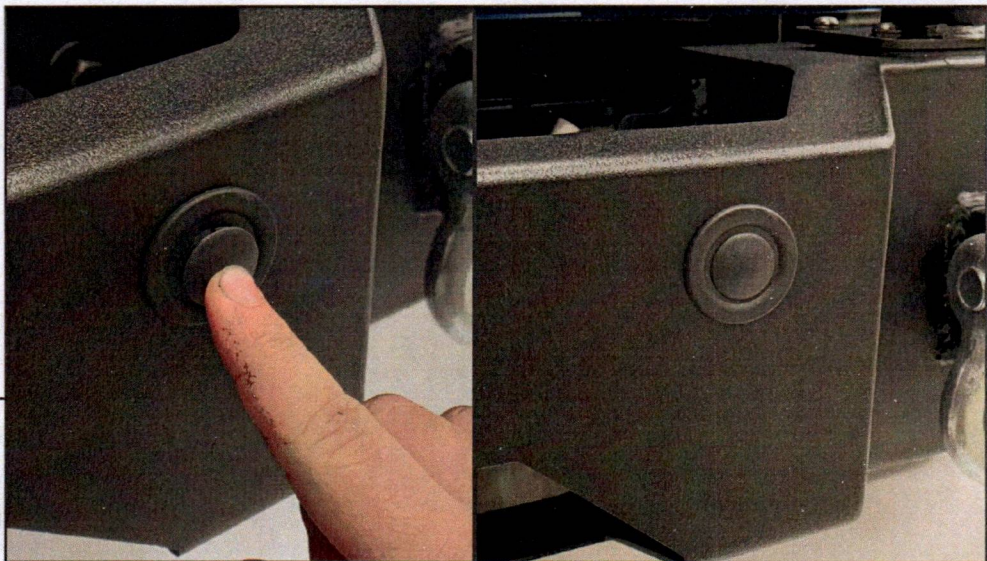
Place the sensor into the designated port, ensuring the mounting tabs are within the slots. Adhere (1) rubber grommet to the sensor using the attached adhesive. Place (1) foam pad onto the rubber grommet. Place the (1) plastic cap onto the assembly, ensuring the (2) tabs lock into place to secure the sensor tightly to the port.



**STEP 15  
INSTALLATION  
(OPTION 2)**

Place the sensor into the designated port, ensuring the mounting tabs are within the slots. Using (2) Phillips screws, gently tighten the screws until moderate pressure is on the sides of the sensor to hold the sensor into place.

**Note: Do NOT over-tighten the screws as the sensor can become damaged.**



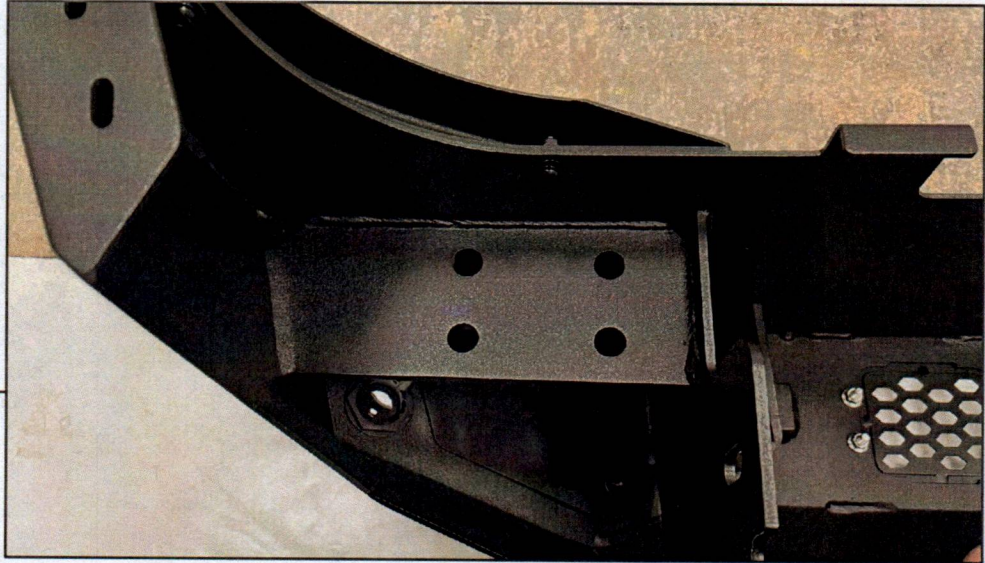
**STEP 16  
OPTION 3  
(NO SENSORS)**

**No Sensor:** Press the plastic cap into the backup sensor housing through the face of the bumper.

## **BARRICADE**

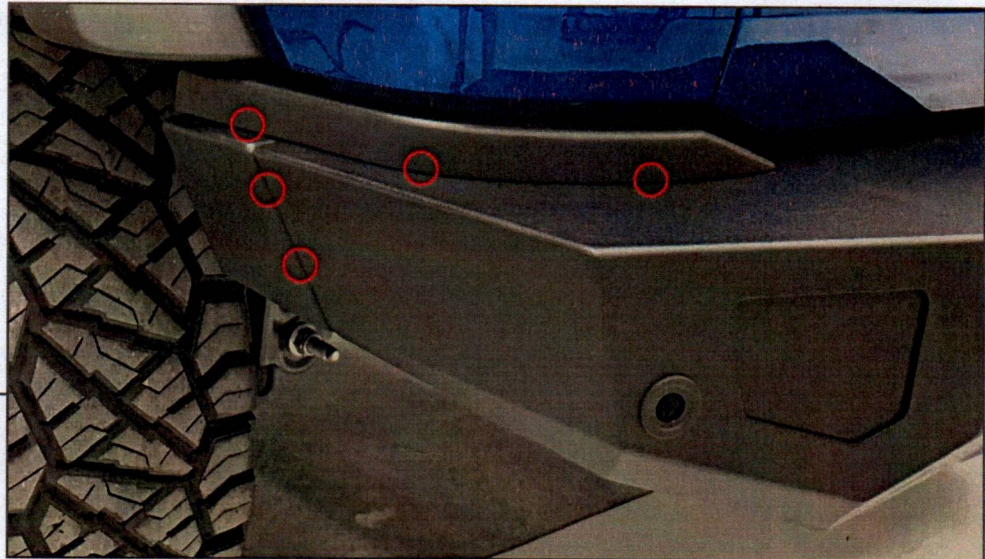
---

### **STEP 17**



Locate the bolt holes along the RH side of the bumper. Fit the included tire carrier post, and secure into place using (4) M12 x 50mm bolts, (4) M12 lock washers, and (4) M12 flat washers. Tighten the hardware evenly until secure.

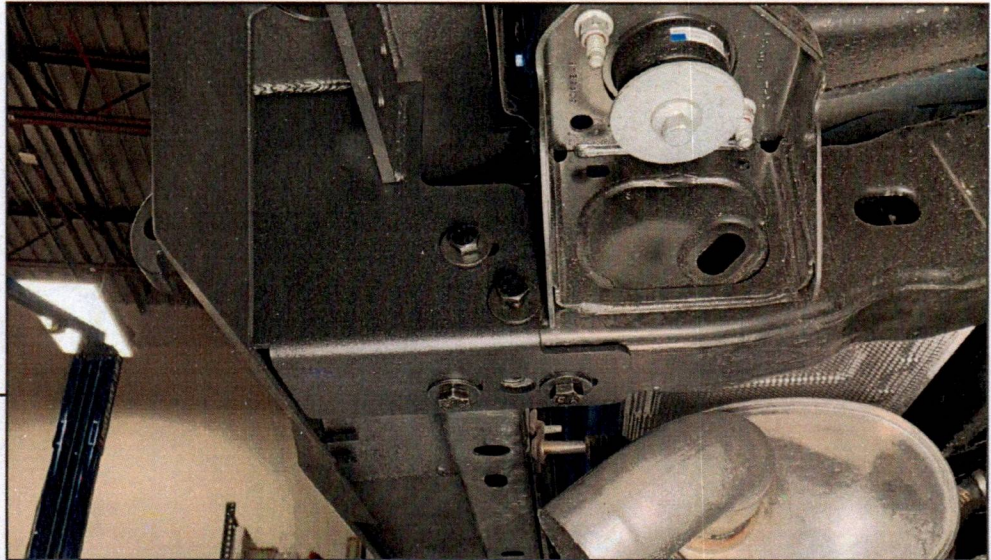
### **STEP 18**



Install the (2) side end caps and (2) top end caps using (10) M6 x 15mm combo Allen bolts and (4) M6 flange nuts.

## BARRICADE

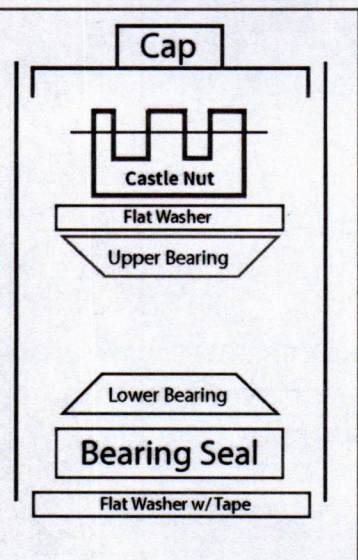
### STEP 19



Mount the new bumper to the bottom of the vehicle frame using (4) M12 x 45mm bolts, (4) M12 lock washers, and (4) M12 flat washers. Secure the bumper to the outside of the vehicle frame using (4) M10 x 35mm bolts, (4) M10 lock washers, and (4) M10 flat washers.

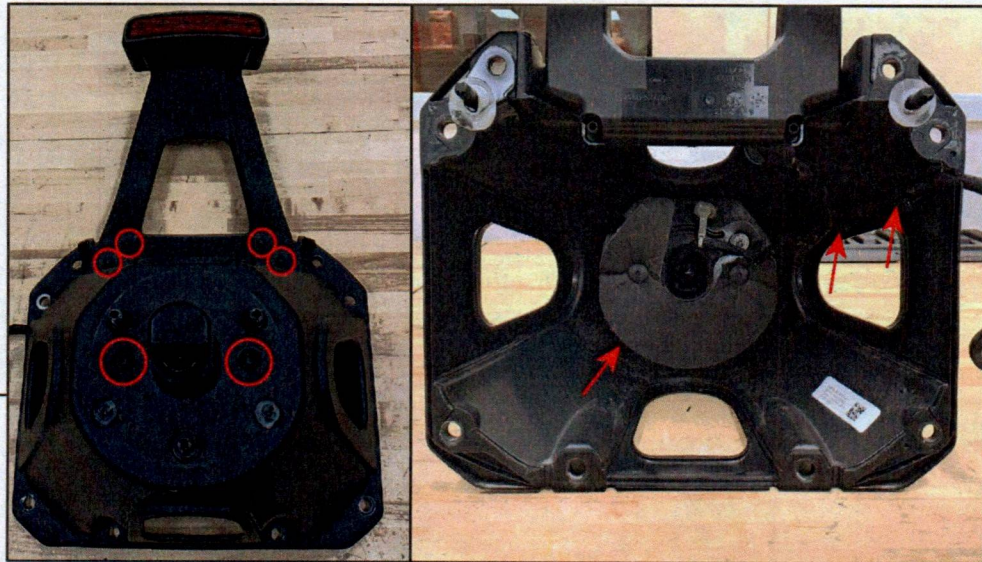
Adjust the bumper to the vehicle, and tighten the hardware to secure into place.

### STEP 20



Install the bearings and seals/washers into the tire carrier, and install to the new bumper. Ensure to pack the bearings with synthetic grease before installation. Tighten the castle nut and insert the cotter pin to secure the assembly into place. Add the included cap to enclose the assembly.

**STEP 21**



Remove (6) T-30 Torx bolts/screws from the tire carrier. Through the back of the tire carrier, dislodge the wiring harness retainers, remove the foam backing, and firmly pull the camera assembly from the tire carrier.

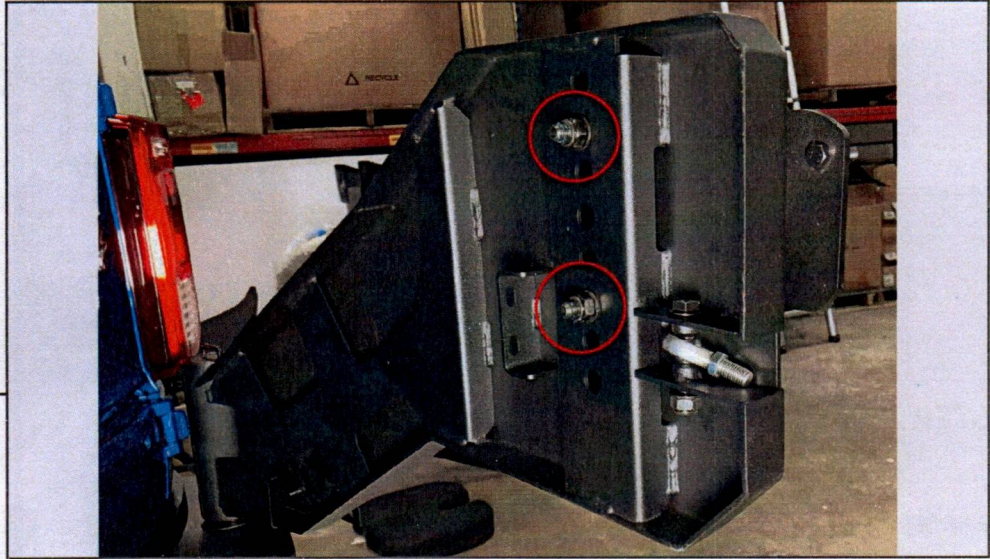
Remove (1) T-30 Torx screw from the camera retaining bracket to release the camera from the housing.

**STEP 22**



Secure the camera to the included camera housing using (2) M3 x 15mm Phillips bolts while using the included spacers.

**STEP 23**

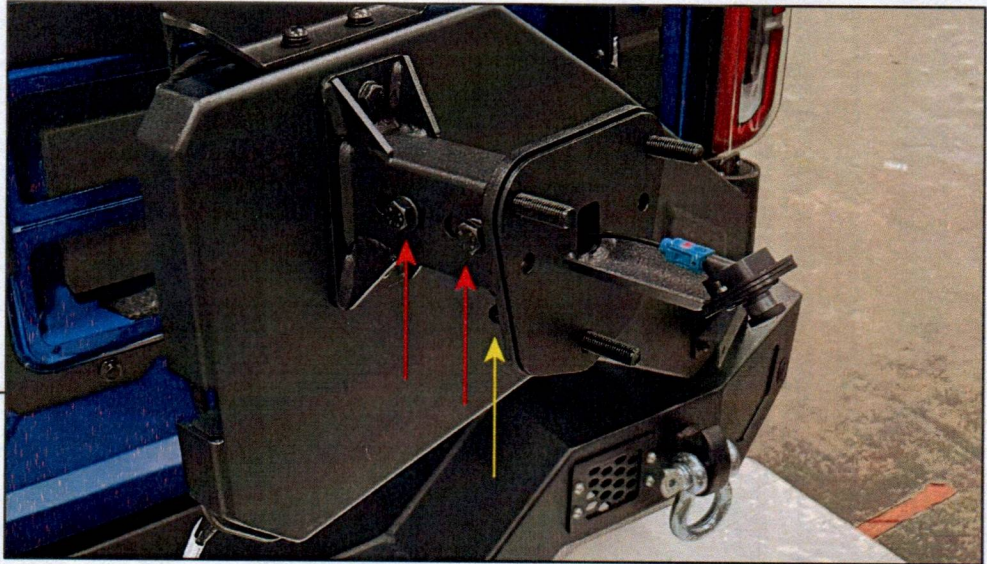


Secure the spare tire receiver bracket to the tire carrier using (2) M12 x 70mm bolts, (4) M12 flat washers, and (2) M12 lock nuts.

**STEP 24**

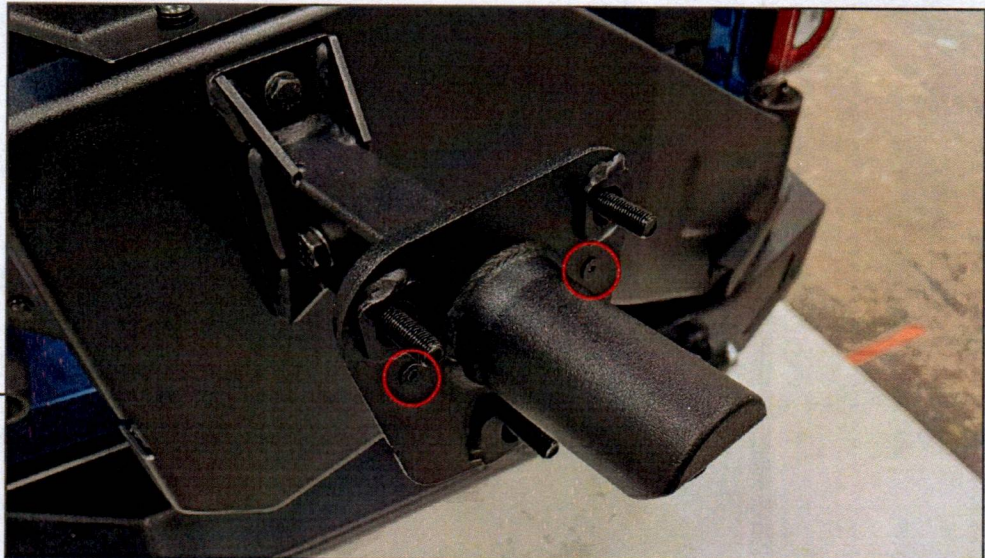


Secure the included rubber bumper to the included bumper bracket using (2) M6 x 25mm Allen bolts and (2) M6 lock nuts. Then secure the bracket to the inside of the tire carrier using (2) M6 x 25mm Allen bolts, (2) M6 flat washers, and (2) M6 flange nuts.

**STEP 25**

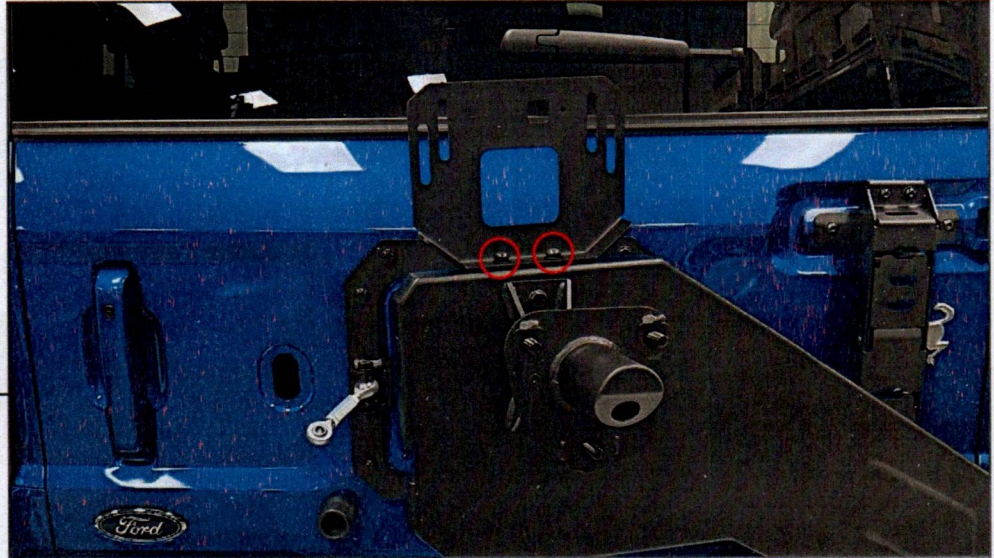
Fit the wheel stud bracket into the previously installed receiving bracket, and loosely secure using (2) M12 x 70mm bolts, (4) M12 flat washers, and (2) M12 lock nuts. Fit (1) M12 x 30mm bolt into the bottom of the bracket to lift the spare tire mount, then tighten the two M12 x 70mm bolts.

Plug the camera extension harness into the camera, and route the harness towards the inside of the tire carrier.

**STEP 26**

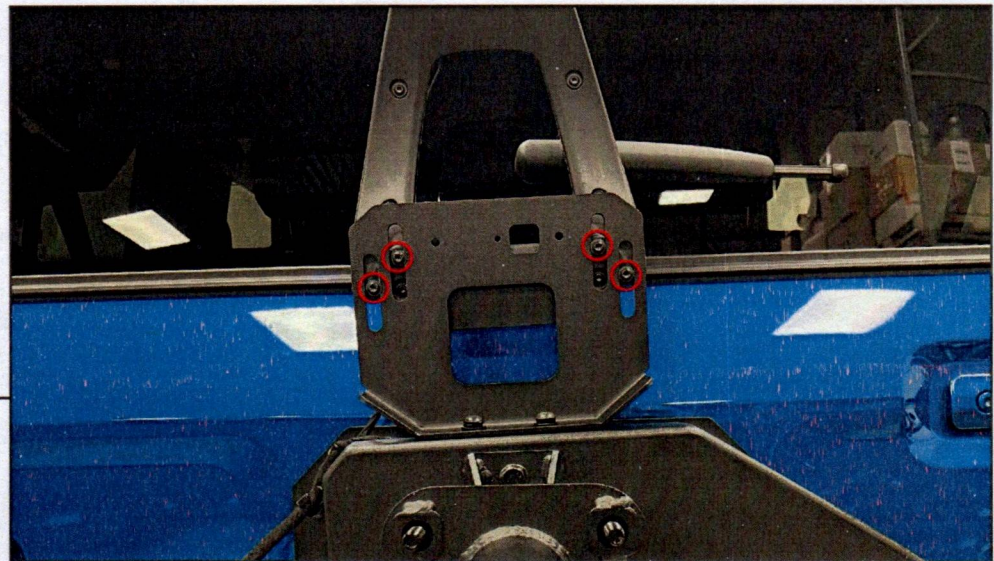
Fit the camera cover onto the camera mounting bracket, and secure using (2) M6 x 20mm tapered Allen bolts.

**STEP 27**

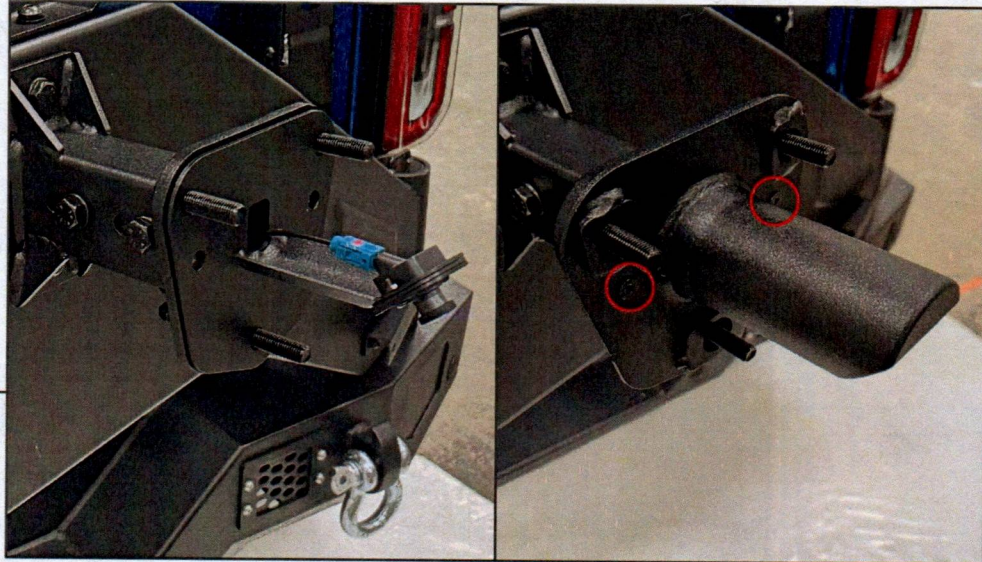


Secure the third brake light bracket to the tire carrier using (2) M10 x 20mm Allen bolts, (2) M10 lock washers, and (2) M10 flat washers.

**STEP 28**



Install the original third brake light assembly to the previously installed bracket using the original (4) T-30 Torx screws.



**STEP 29**

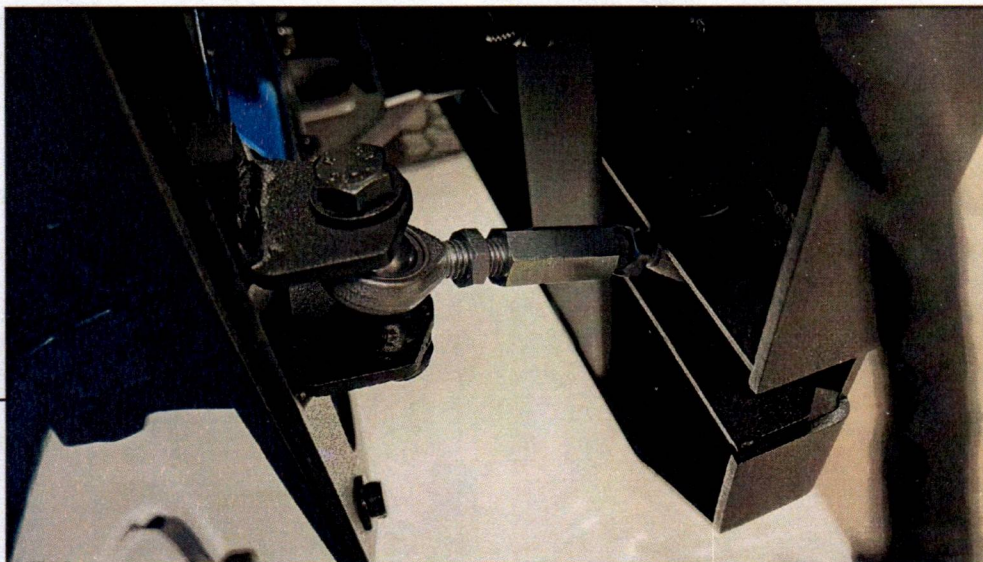
Plug in the appropriate camera extension harness, and route the harness towards the end of the tire carrier. Fit the camera mount to the tire carrier, and plug the camera harness into the camera.

Use (2) M6 tapered bolts to secure the camera mount to the tire carrier.



**STEP 30**

Mount the license plate bracket to the tire carrier using (2) M8 x 20mm Allen bolts, (2) M8 lock washers, and (2) M8 flat washers.

**STEP 31**

Secure the double heim joint to the tailgate mounted bracket and the tire carrier using (2) M12 x 75mm shoulder bolts, (4) M12 flat washers, and (2) M12 lock nuts. With the tailgate open, adjust the tire carrier to tailgate distance. Slowly close the tailgate until the tire carrier is tight when the tailgate is closed. Once adjusted, tighten the (2) jam nuts on the heim joint.

**STEP 32**

Transfer the original bumper wiring harness to the new bumper, and secure as necessary using the included (10) cable ties. Plug the included license plate lamp harness into the rear bumper harness, and route the LED lights to the license plate bracket. Mount the license plate to the bracket using (2) M6 x 20mm Allen bolts, (4) M6 flat washers, and (2) M6 nuts.

## **BARRICADE**

---



---

### **STEP 33**

Install the (2) 3/4" D-Rings to the bumper, tighten until secure. Plug the tire carrier wiring into the vehicle harness inside the tailgate, and fit the grommet into the tailgate.

Installation is now complete.