

MAXIMUS-3



FORD BRONCO/RAPTOR

WINCH MOUNT SADDLE

(Fits Factory Modular Steel Bumper)

PART #: BR1003WS

Approximated Installation Time: 2-3 Hours

Installation Difficulty Level: Easy

INSTALLATION GUIDES

PLEASE MAKE SURE YOU READ AND UNDERSTAND THE ENTIRE INSTALLATION GUIDE BEFORE YOU START. WE EXPECT YOU TO HAVE BASIC MECHANICAL ABILITIES TO PERFORM THIS INSTALLATION.

WE RECOMMEND THAT YOU SEPARATE AND IDENTIFY ALL THE PARTS AND HARDWARE KITS YOU RECEIVED WITH YOUR SHIPMENT BEFORE YOU PROCEED TO DISASSEMBLE YOUR VEHICLE.



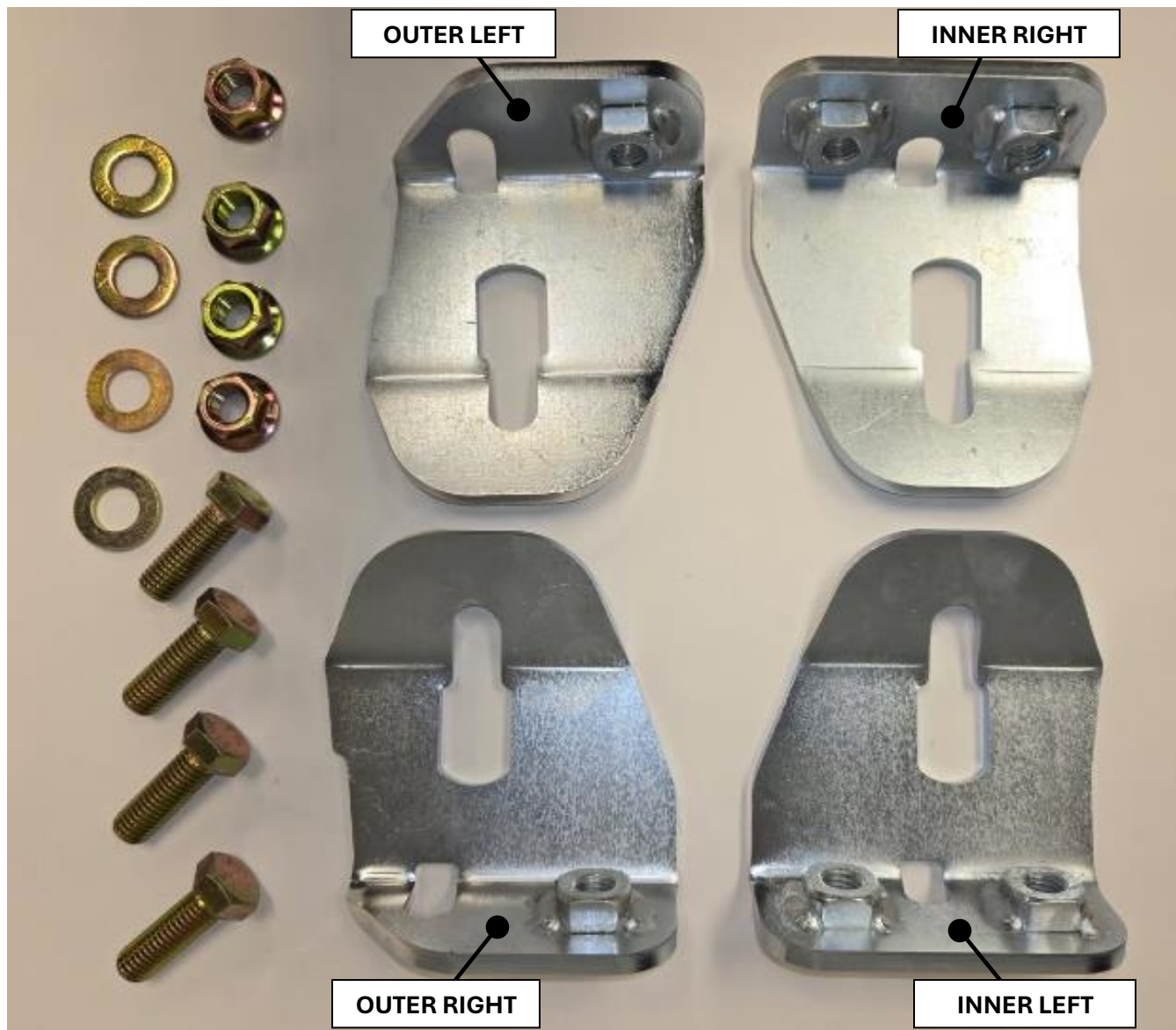
IMPORTANT

Follow these instructions precisely. Maximus-3 is not liable for any damage caused by improperly installed products. It is the purchaser's responsibility to ensure both the installation and maintenance are performed properly as set forth in this guide. We recommend using anti-size paste on thread bolts.

COMPONENT LIST	QTY
FAIRLEAD BRACKET	1
SLIDER TABS	2
BACK PLATES	2
PUCKS	4
OPTIONAL COMPONENTS	
FRAME HORN BRKT INNER L	1
FRAME HORN BRKT INNER R	1
FRAME HORN BRKT OUTER L	1
FRAME HORN BRKT OUTER R	1

HARDWARE LIST	QTY
M12 FLANGE BOLTS	4
M12 FLANGE NUTS	4
7/8 HITCH PINS	2
3/8 BOLTS	3
3/8 WASHERS	3
3/8 SERRATED NUTS	3
3/8 CARRIAGE BOLTS	2
3/8 WASHERS	2
3/8 NYLOC NUTS	2
OPTION: M12 HEX BOLT	4
OPTION: M12 SERRATED HEX NUT	4
OPTION: FLAT WASHER	4





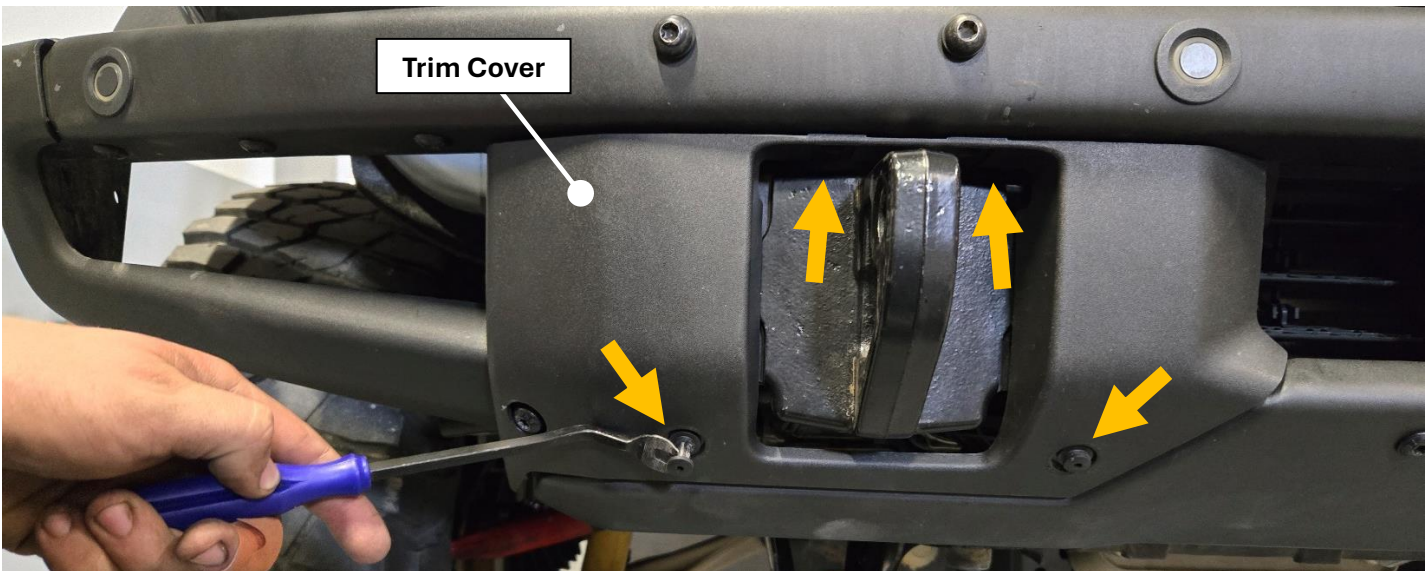
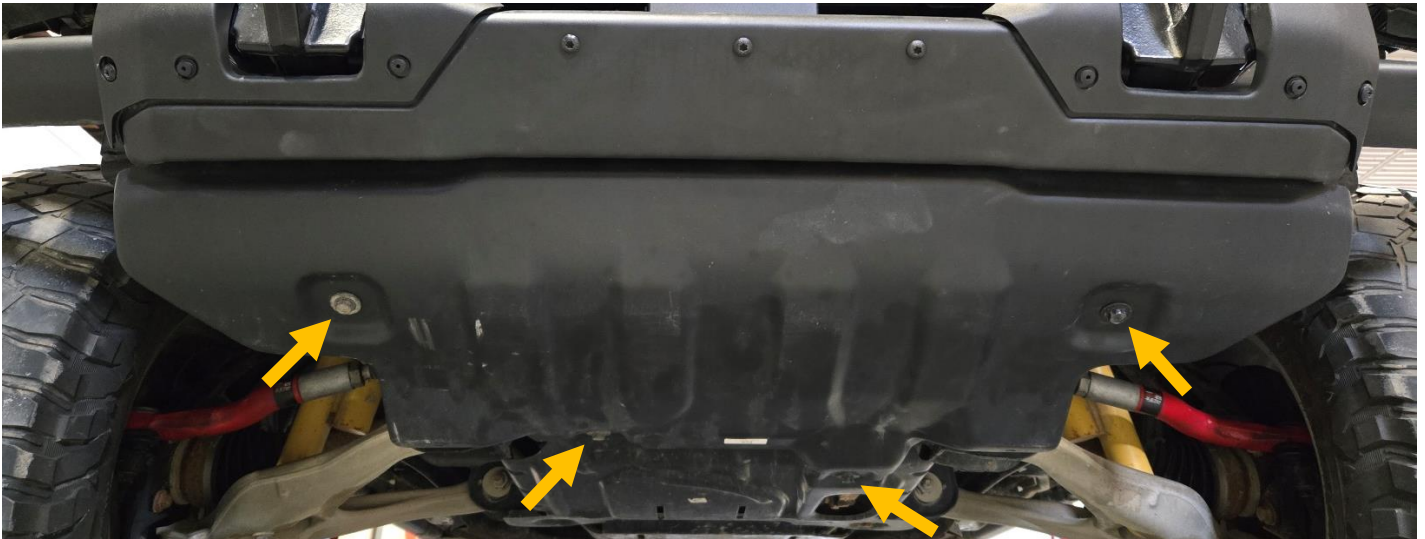
INSTALLATION STEPS

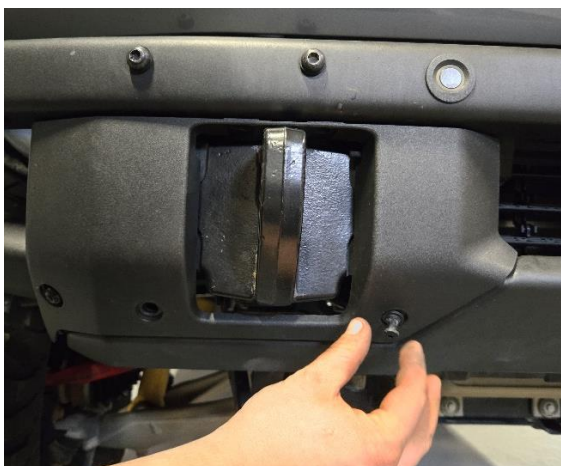
If you have frame horn reinforcement brackets already installed, **skip to step 2.**

STEP 1: Install Maximus-3 Frame Horn Reinforcement Brackets

- A. Remove the skid plate** using a 15mm Socket. Save all the factory bolts for reinstallation later.
- B. Disconnect the main wiring harness** located behind the bumper on the driver side.
- C. Remove plastic trim covers** from each side of the bumper.

For factory steel bumper you need to remove four (4) clips from each side and then pull the covers off.
Save all the factory clips for reuse later.





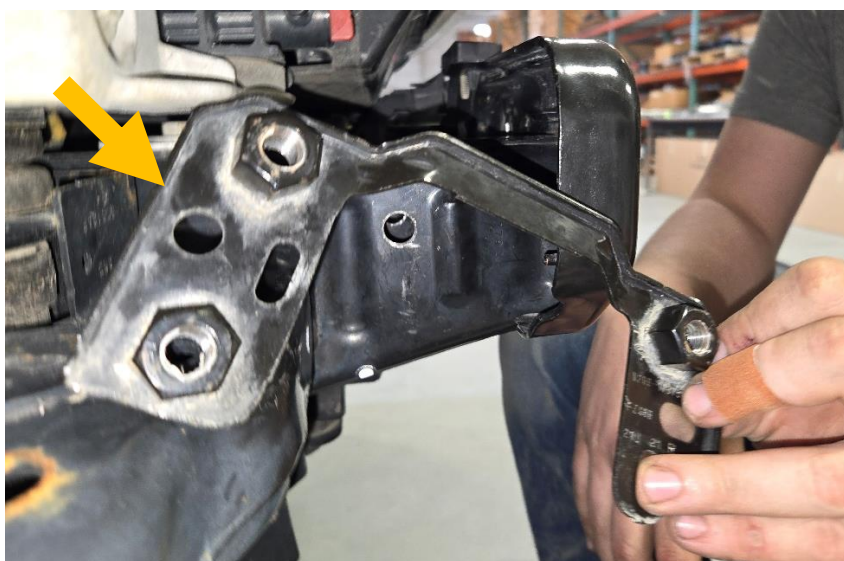
D. Remove the bumper by unbolting the 6 bolts (3 on each side) that hold the OEM bumper in place using a 15mm socket. Save all the factory bolts for reinstallation later.



E. Remove the factory mounting nut plate from behind the frame horns, one on each side. You will not need those nut brackets again for this installation.



Remove Factory Nut Plate



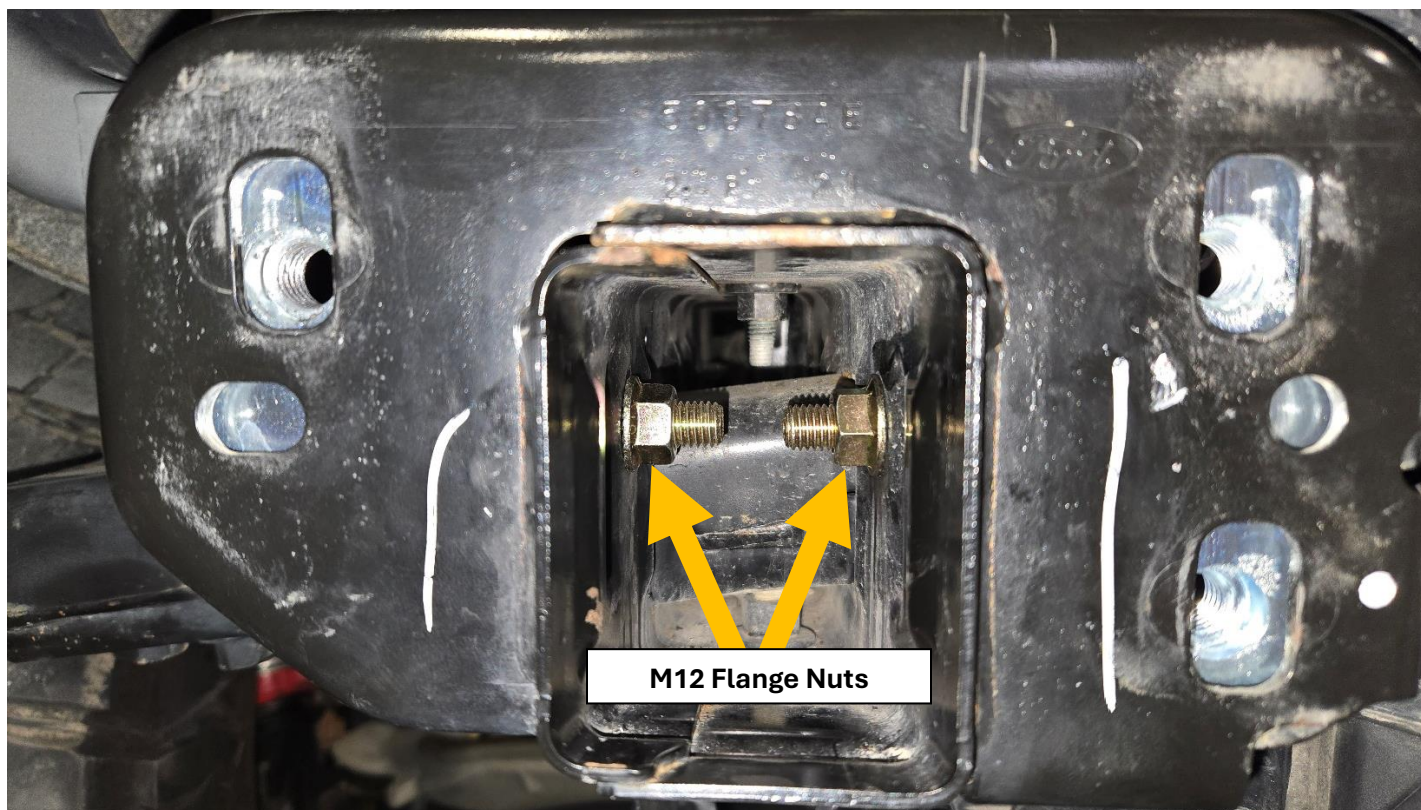
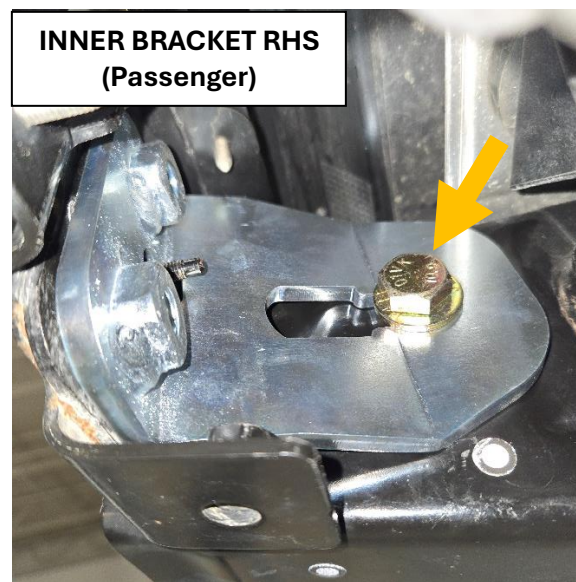
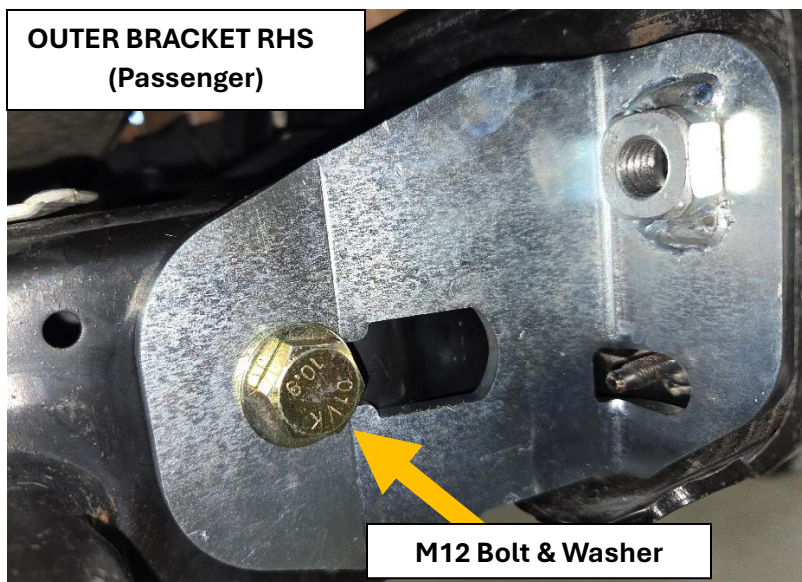
F. Install the Maximus-3 brackets as shown below using M12 bolt, serrated nuts and washers supplied. Note outer and inner brackets, driver and passenger side brackets, and their orientation. The single nut bracket goes on the outside of frame.



If mounting holes in the frame are small to fit the M12 bolts, please drill them out with a 1/2" drill bit.

Insert the bolt and washer from outside and the serrated flange nut from inside the box frame.

Align the nuts with the slotted mounting holes on the frame horns and loosely tighten the bolts using a 19mm socket/wrench, just enough to stay aligned behind the frame horns.



G. Reinstall your bumper and skid plate using your original bolts removed in step A and D.

If you have an aftermarket bumper, please make sure that the bumper bolts are M12x1.75 thread to match the threads in the Maximus-3 brackets.

Install the bumper plastic covers but leave the clips out if you are installing Maximus-3 winch mount.

H. Tighten all bolts to spec:

Bumper bolts = 60 lb.ft

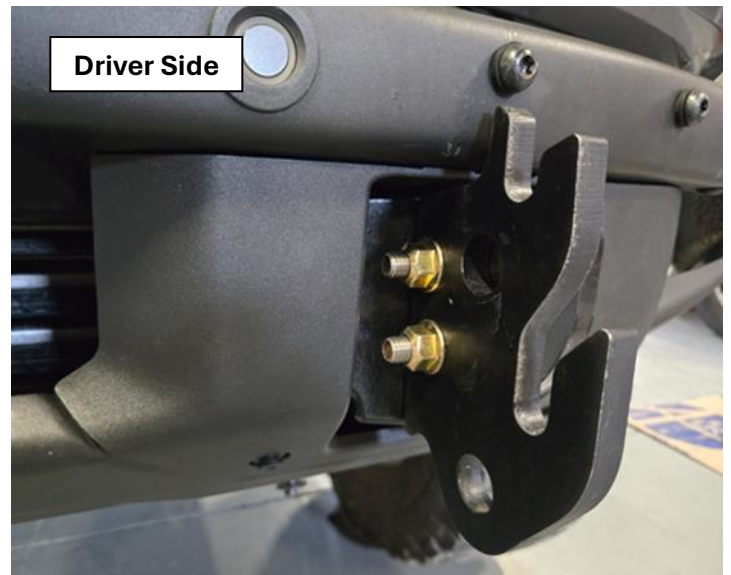
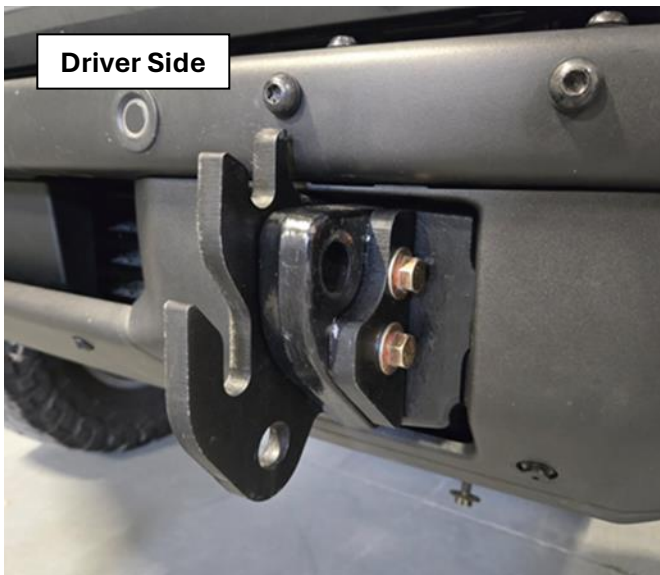
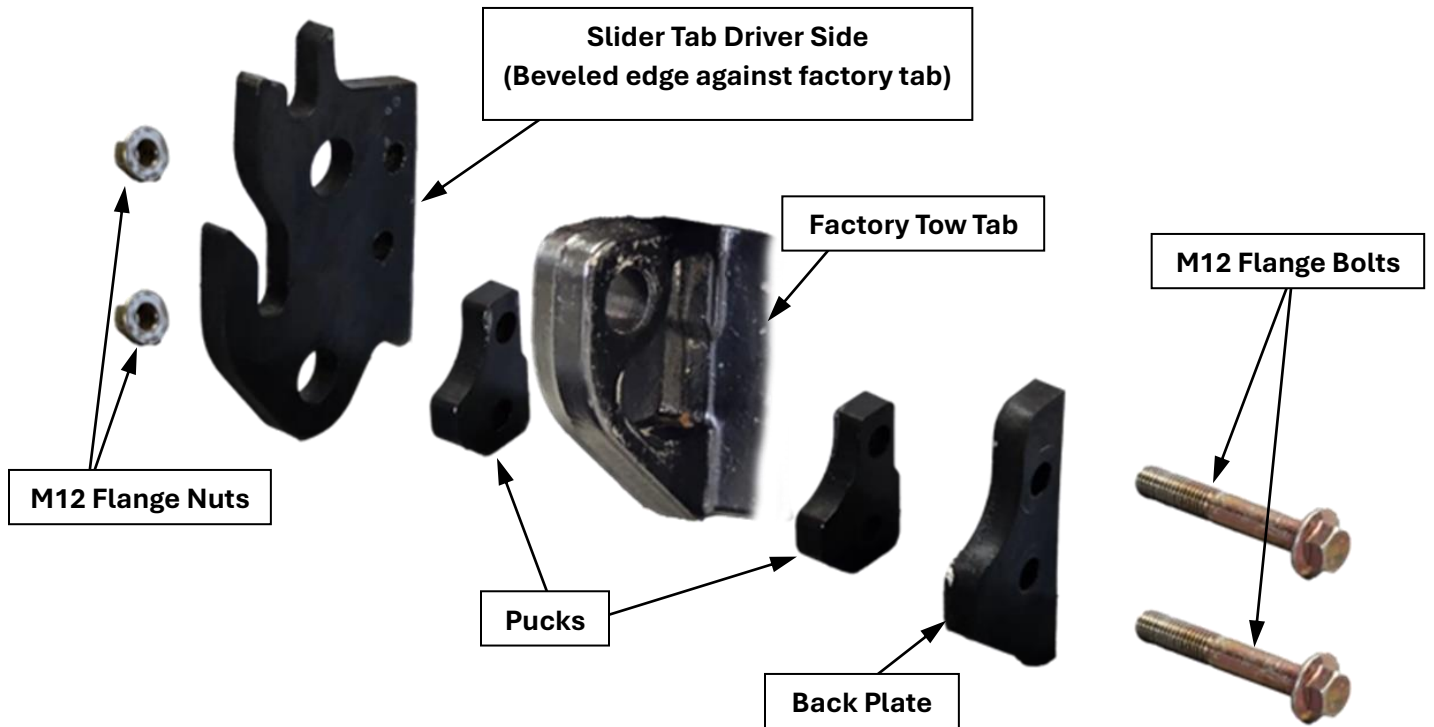
Maximus-3 brackets bolts = 84 lb.ft

STEP 2: Install Maximus-3 Winch Mount Saddle (refer to YouTube video on the website)

A. With the bumper plastic pin clips removed, pull the plastic cover out but leave hanging in place as shown below. This is because the cover cannot be reinstalled later after Maximus-3 mounting tabs are installed in the next step.

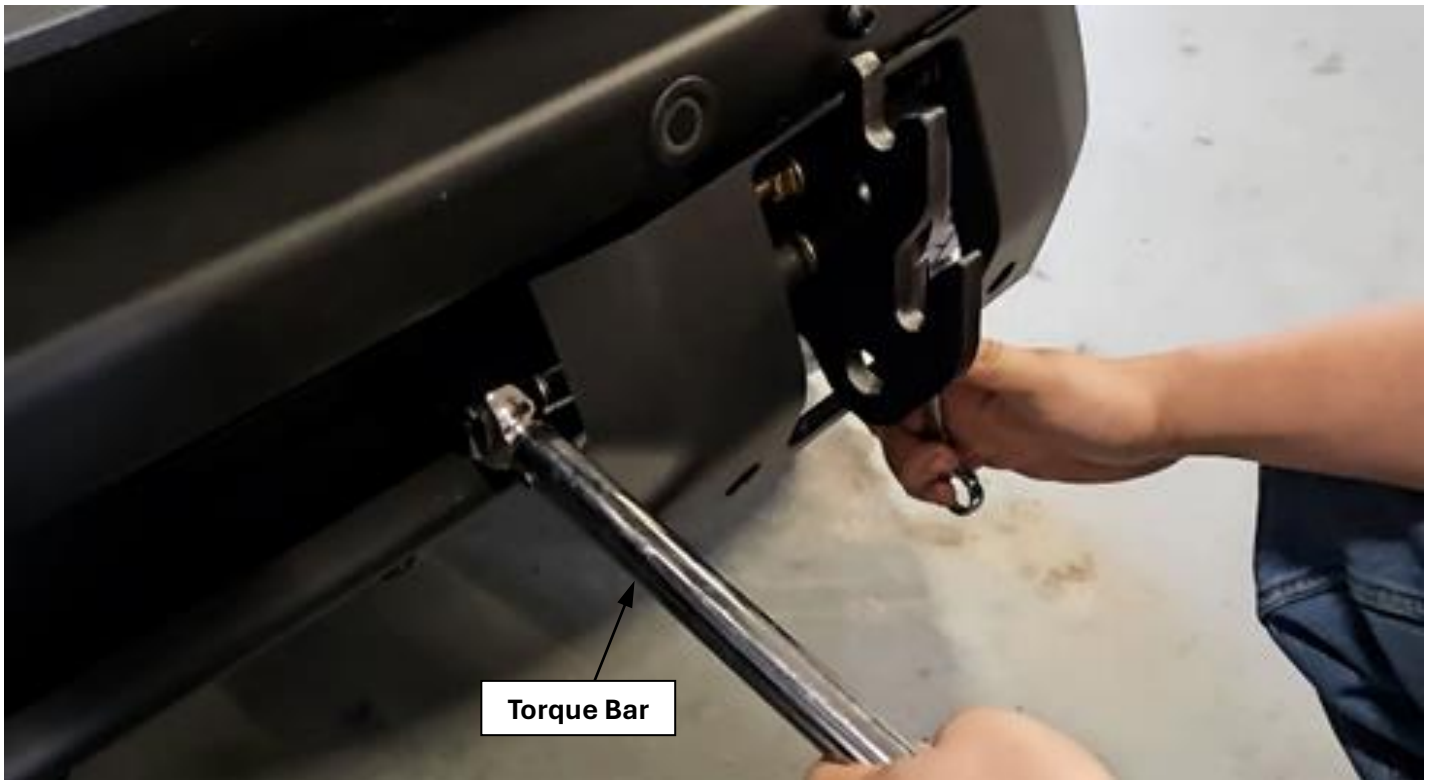


B. For the driver side: assemble the Slider Tab, 2 Pucks and Back Plate as shown below using M12 bolts and nuts provided. Make sure you do this with the plastic cover in place as you cannot add it later. Please note the order and orientation of the components.

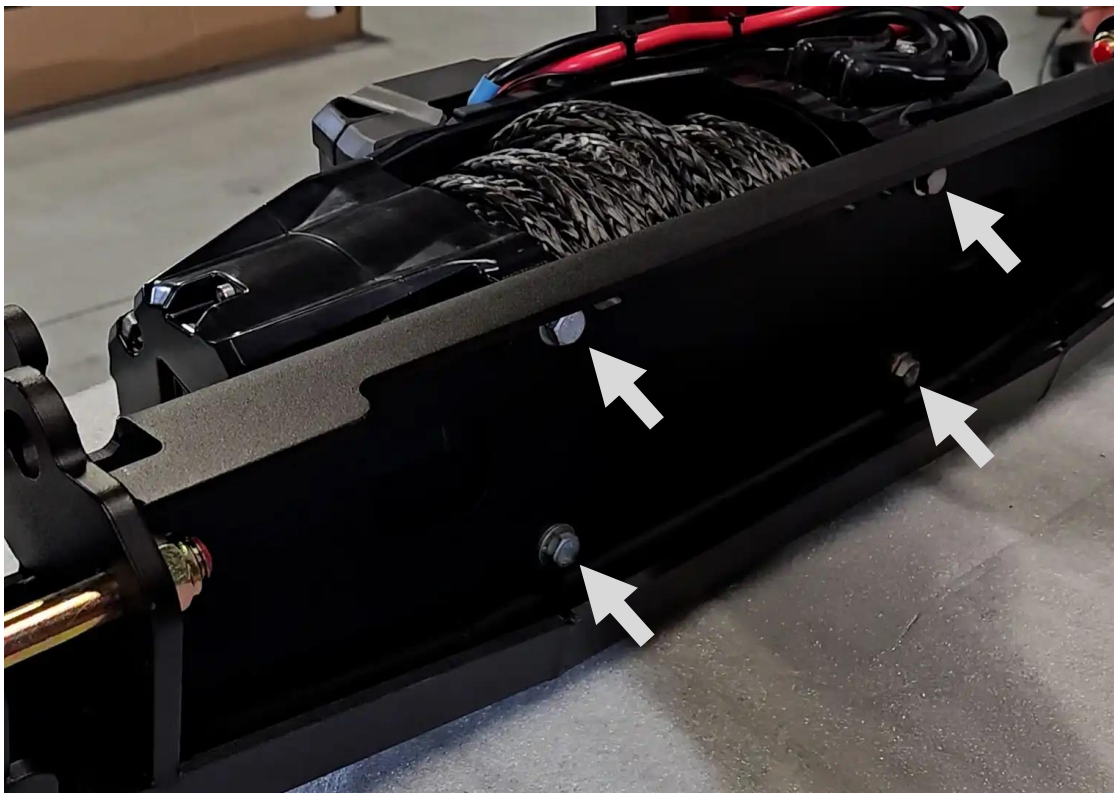


Repeat the same on the passenger side.

- C. Using a 16mm wrench on the bolt and 18mm socket, extension on the nut, torque all four (4) bolts to 88 lb.ft.** Slide the 18mm socket and extension between the bumper and the plastic trim cover, as shown in the picture below.



- D. Clip the plastic trim covers back in place and insert the pin clips, on both sides.
- E. Assemble your winch to the Maximus-3 winch mount using the hardware supplied with your winch kit following the manufacturer instructions, as shown below.



- F. Bolt your fairlead to the fairlead bracket** using two (2) carriage bolts, washers and nuts supplied, as shown below. Carriage bolts go through the square holes from the back side of the bracket.
- G. Bolt the fairlead bracket to the Maximus-3 winch mount** using three (3) bolts, washers and serrated flange nuts supplied, as shown below.



- H. Splice your winch power cables** (black and red) adding a battery quick connect/disconnect connector between. You can route your wire to the battery as desired.

For best results and cable length reach, terminate the winch side of the connector on the driver side.

- I. Connect your winch saddle assembly** to your ford bronco as shown below and then insert the 7/8" hitch pins and secure with safety pins on both sides.

Please refer to the YouTube video on the website.

