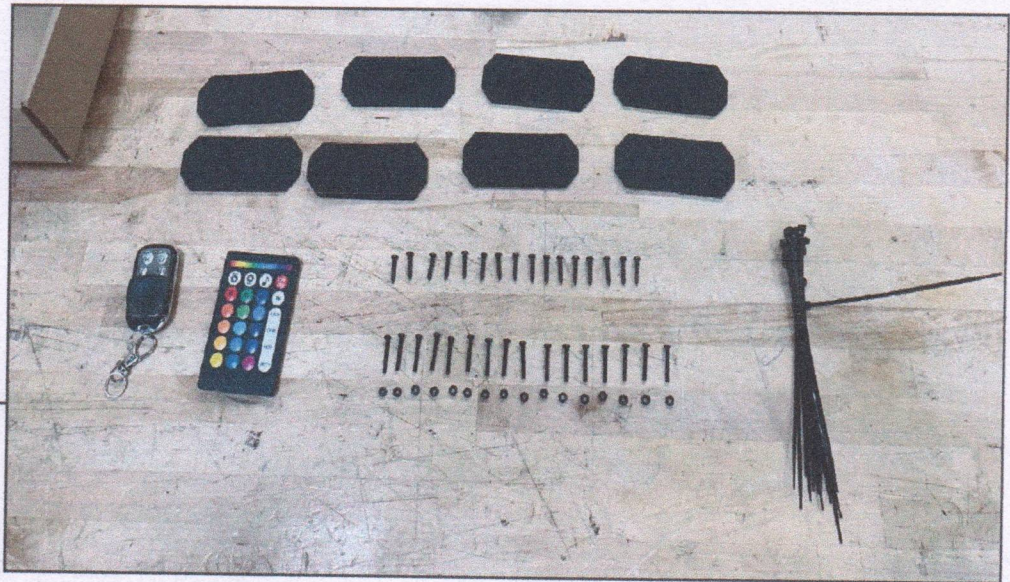


STEP 1



Lay out and identify all included components.

- Foam Pads will fit between the vehicle mounting surface and the rock light assembly.
- Phillips Screws OR Bolts w/ Nuts will be used to mount the rock lights, depending on preference.
- Cable Ties will secure the rock light harness while routing into place.
- Remote/Key Fob: Both can be used to trigger different lighting effects.

STEP 2



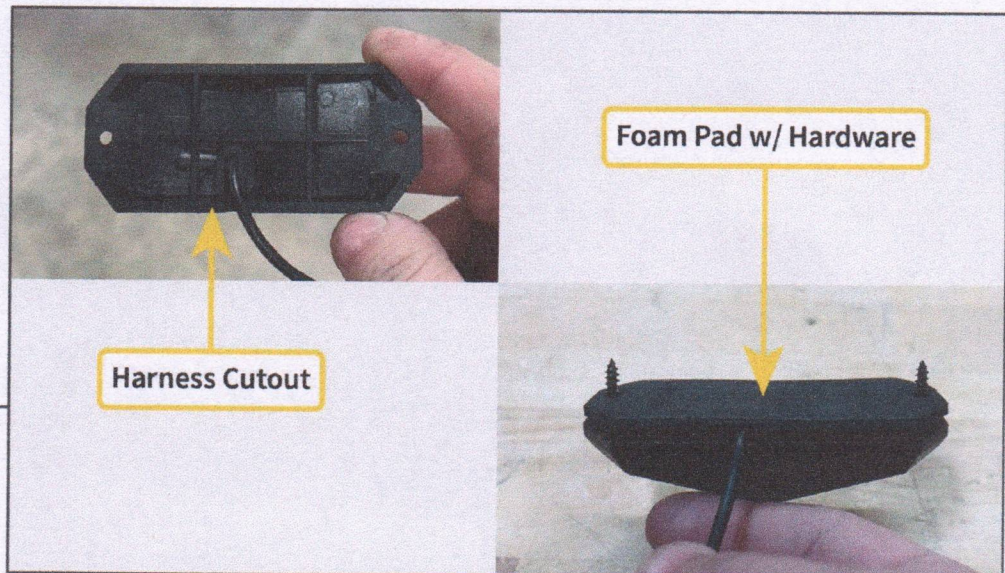
Beginning at the vehicle battery, route the (8) rock light wire leads on the main harness from the engine bay (LH/Driver Side) towards the rear of the vehicle along the frame. The wire leads will reach to the center of the vehicle if routed properly (for Wrangler JK/JL 4 Door).

Note: Routing the wiring harnesses neatly is important to ensuring proper fitment. If the wiring is incorrectly routed, there may not be enough length to each the main harness. Take your time to route the harness so each harness reaches the desired light mounting locations.



STEP 3

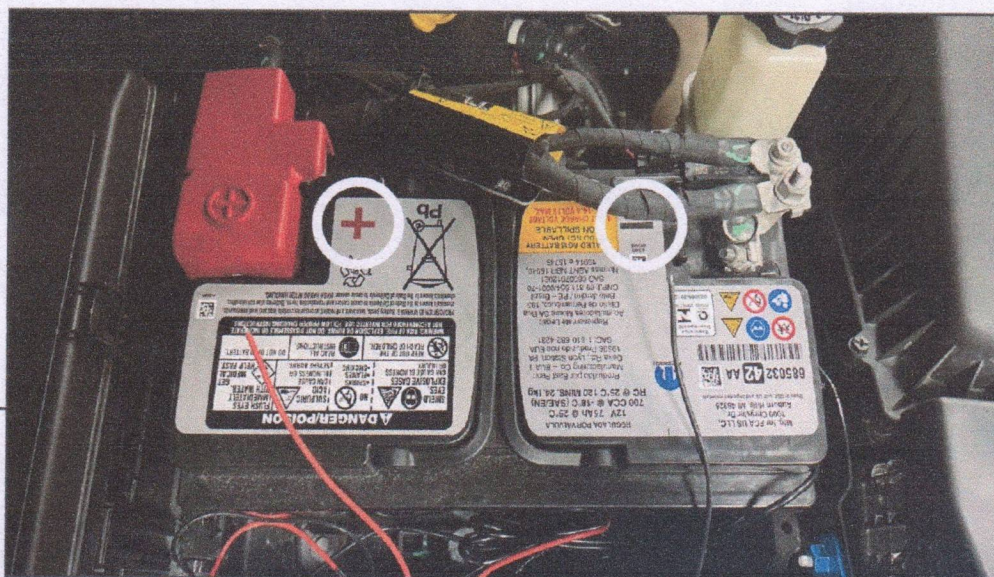
The rock lights can be mounted to any desired position on the vehicle (under running board, wheel well, undercarriage, etc). Use this time to decide on the mounting positions. Temporarily secure the lights into place using tape and ensure the wiring will reach the main harness leads.



STEP 4

Once the desired mounting position is decided, secure the rock lights using the included hardware (hardware type is mounting surface specific). Fit the rock light harness into the rock light cutout, and fit the foam pad into place. Then, secure the rock light to the vehicle using the included hardware.

Drilling a hole for the wiring harness to route above panels such as wheel well liners is recommended.



STEP 5

With all rock lights secured, neatly secure the wire leads using the included cable ties. Neatly bundle excessive wire length, if necessary. Ensure to route the wiring away from any hot/moving components under the vehicle.

Connect the Red wire terminal to the battery positive (+) terminal using (1) ring terminal. Connect the Black wire terminal to the battery negative (-) terminal using (1) ring terminal. Route the on/off switch to a suitable vehicle location. Press the button to power the lights on.



STEP 6

Remove the battery cover from the remote control. Then, test the lighting using the remote control and/or key fob remote.

Installation is now complete.



LED ROCK LIGHTS

- (1987-1995 WRANGLER YJ)
- (1997-2006 WRANGLER TJ)
- (2007-2018 WRANGLER JK)
- (2018-2025+ WRANGLER JL)

INSTALLATION INSTRUCTIONS

CONTENTS

- (10) Rock Lights
- (10) Foam Pads
- (20) Phillips Screws
- (20) Phillips Bolts
- (20) Hex Nuts
- (20) Cable Ties
- (1) Remote Controller
- (1) Key Fob Controller

TOOLS REQUIRED

- Drill and Drill Bits
- Phillips Bit / Screwdriver
- Pliers
- Panel Removal Tool
- 10mm Wrench

SKU # J251246