



WIDEBODY KIT

(2021-2024+ BRONCO - 4 DOOR)

INSTALLATION INSTRUCTIONS

CONTENTS

| | |
|--------------------------------|--|
| (1) LH Front Fender | (2) Front Fender Support Brackets [LH/RH] |
| (1) RH Front Fender | (2) Quarter Panel Support Brackets [LH/RH] |
| (1) LH Front Fender Liner | (2) Front Fender Plastic Bracket [LH/RH] |
| (1) RH Front Fender Liner | (2) Quarter Panel Plastic Bracket [LH/RH] |
| (1) LH Front Flare | (1) Fuel Filler Bracket |
| (1) RH Front Flare | (1) Fuel Filler Pin |
| (1) LH Quarter Panel | (1) Fuel Filler Door |
| (1) RH Quarter Panel | (12) LED Rock Lights |
| (1) LH Rear Fender Liner | (4) Wire Harnesses |
| (1) RH Rear Fender Liner | (24) Rock Light Phillips Screws |
| (1) LH Rear Flare | (58) M6x1.00 x 16mm Phillips Bolts |
| (1) RH Rear Flare | (58) M6 Flat Washers |
| (1) LH Rear Flare Add-On Panel | (58) M6x1.00 Clip Nuts |
| (1) RH Rear Flare Add-On Panel | (78) Plastic Flare Retaining Clips |
| (1) LH Rear Filler Panel | |
| (1) RH Rear Filler Panel | |

TOOLS REQUIRED

| | |
|---------------------|----------------------|
| 8, 10, 13mm Sockets | Isopropyl Alcohol |
| T-20 Torx Bit | Microfiber Cloth |
| Ratchet | Drill and Drill Bits |
| Panel Removal Tool | |

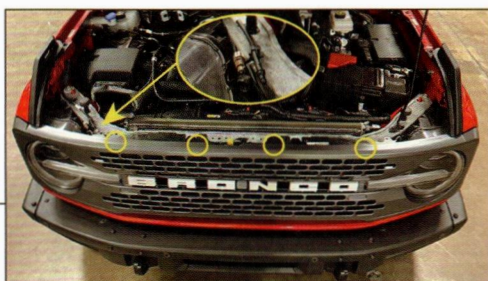
SKU # FB62885

STEP 1



Open the hood. Remove (7) plastic push clips from the radiator cover. Lift and remove the radiator cover from the vehicle.

STEP 2



Locate and remove the (4) 10mm bolts securing the grille to the radiator support. If applicable, unplug the front camera and washer nozzle along the RH side of the grille. Firmly pull the grille away from the vehicle to disengage the metal retaining clips around the perimeter of the grille. Set the grille aside.

STEP 3



Reach under the vehicle fender flare and turn the flare retaining latches 90°. Then, firmly pull the fender flare away from the vehicle.

STEP 4



Pull the edge of the front painted panel away from the fender. Then, firmly pull the center of the painted panel from the center of the vehicle. The painted panel is only secured using plastic retainers.

STEP 5



Designate a soft place for door storage.

Pull the door wiring harness from the chassis connector. Then, remove (1) 13mm bolt from each door hinge. Lift the door from the designated lift points, and place on a soft surface.

STEP 6



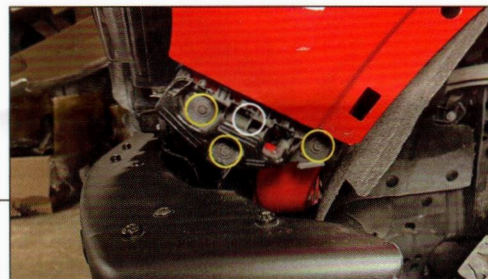
Remove (4) plastic push clips from the inner fender trim panel. Then, remove (3) 10mm screws from the inner fender trim panel. Remove the trim panel from the fender and set aside.

STEP 7



Remove (1) 8mm bolt from the top of the fender.

STEP 8



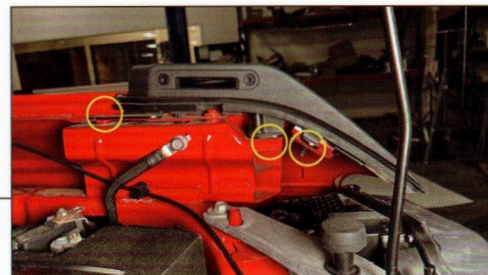
Remove (3) 10mm bolts from the front fender plastic panel. Then, remove (1) 10mm bolt securing the fender to the vehicle.

STEP 9



Remove (5) Phillips plastic screw clips and (4) 7mm screws securing the edge of the fender liner to the fender lip.

STEP 10



Remove (1) 10mm bolt and (2) 10mm nuts from the hood mounting point. Then, remove the mounting point from the vehicle and set aside.

STEP 11



Remove the (6) 10mm bolts securing the fender to the vehicle. Then, lift and remove the fender from the vehicle.

Note: (1) of the 10mm bolts must be removed behind the inner fender liner.

STEP 12



Remove (5) Phillips plastic screw clips from the inner fender liner. Then, use a pry tool to dislodge the (3) lower plastic clips from the vehicle frame. Remove the fender liner from the vehicle.

Place the new fender on a soft workable surface.

STEP 13



Identify the LH/RH components using the embossed labels ("L" or "R"). All brackets and components are specific to each part of the kit.

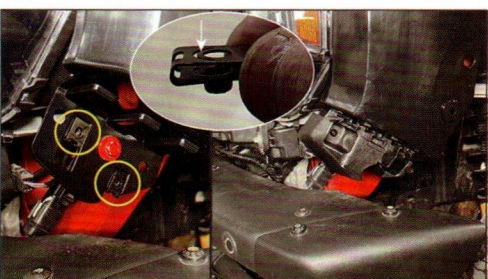
Fit the upper fender reinforcement bracket to the new fender, and secure into place using (3) M6 bolts, (3) M6 flat washers, and (3) M6 clip nuts.

STEP 14



Loosely fit the fender to the vehicle using the original fender mounting bolts. Adjust the fender to align with the hood and door, and then tighten the fender hardware to secure the fender into place.

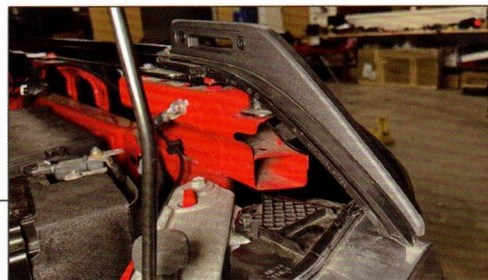
STEP 15



Fit (2) M6 clip nuts onto the front of the fender cutouts. Bend the clip nut metal fang downwards before fitting to ensure the clip nut stays in place.

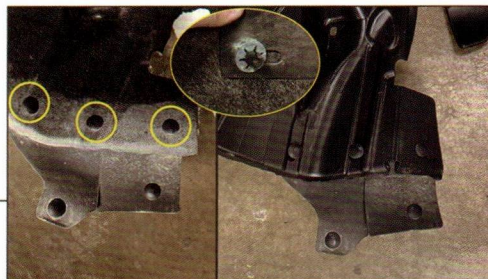
Secure the provided plastic front bracket to the fender using (2) M6 bolts and (2) M6 flat washers.

STEP 16



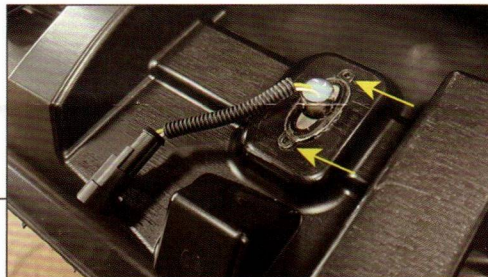
Secure the vehicle hood mounting point to the vehicle using the original hardware.

STEP 17



Remove the lower splash shield from the original inner fender liner using a pry tool to remove the metal star clips. Then, transfer the lower splash shield to the new inner fender liner reusing the plastic clips and star clips.

STEP 18



Fit the included rock lights into the top of the fender liner, and secure into place using (2) Phillips screws per rock light. The screws will create threads into the fender liner screw bosses.

Connect (1) wiring harness to the LED lights, ensuring the bare leads portion of the harness will route towards the front of the vehicle. Drilling (1) hole in the fender will be required to route the harness behind the fender towards the headlight wiring harness. See RED circle in Step 19.

STEP 19

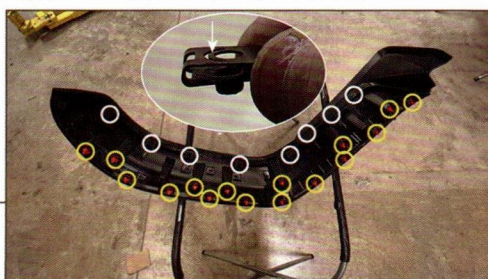


Fit the new fender liner to the vehicle. Route each wheel well mounting point in the liner to the OEM fender liner mounting holes. The liner will secure using OEM hardware inside of the wheel well.

Secure the fender liner to the outside of the fender using (6) M6 bolts, (6) M6 flat washers, and (6) M6 clip nuts.

Note: To gain additional access behind the fender to secure the liner, remove the headlight assembly by removing (2) 10mm bolts, (1) 8mm bolt, and (1) plastic push clip.

STEP 20



Place the fender flare on a soft surface. Install (16) plastic retaining clips into the top edge of the fender flare. Then, install (8) M6 clip nuts into the fender flare cutouts. Bend the clip nut metal fang downwards before fitting to ensure the clip nut stays in place.

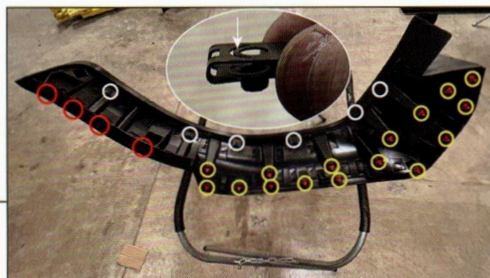
STEP 41



Fit the inner fender liner to the vehicle reusing the original inner fender liner hardware. Fit the included rock lights into the top of the fender liner, and secure into place using (2) Phillips screws per rock light. The screws will create threads into the fender liner screw bosses.

Connect (1) wiring harness to the LED lights, ensuring the bare leads portion of the harness will route towards the rear of the vehicle.

STEP 42



Place the fender flare on a soft surface. Install (16) plastic retaining clips into the top edge of the fender flare. Then, install (6) M6 clip nuts into the fender flare cutouts. Bend the clip nut metal tang downwards before fitting to ensure the clip nut stays in place.

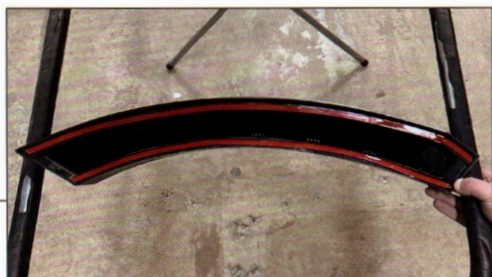
Remove (2) OEM fender flare retaining latches and (2) OEM plastic clips from the original fender flare and transfer to the new flare.

STEP 43



Fit the fender flare to the vehicle ensuring all plastic clips engage to the quarter panel. Then, secure the flare to the inner fender using (6) M6 bolts and (6) M6 flat washers.

STEP 44



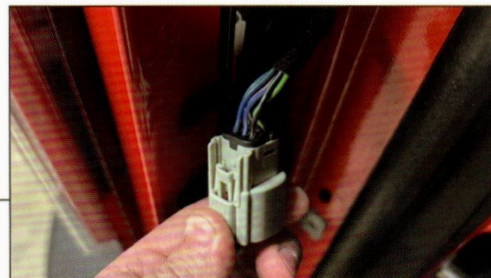
Using isopropyl alcohol and a microfiber cloth, clean the bottom-side of the flare add-on panel. Then, apply the included double sided tape to the flare add-on panel.

STEP 45



Clean the vehicle door using isopropyl alcohol and a microfiber cloth. Then, test fit the flare add-on panel before peeling the tape backing. Once familiar with fitment, peel the tape backing and firmly press the flare add-on panel to the vehicle door. Apply firm even pressure to encourage adhesion.

STEP 46



Splice the rock lighting into the vehicle parking lamp circuits in the headlight following the diagram below.

| LED Rock Lights | Vehicle Headlight Harness |
|-----------------|---------------------------|
| Red (+) | Blue/Gray |
| Black (-) | Black/Gray |

Re-install the grille, painted trim, and radiator cover to the vehicle reusing the original hardware.

STEP 47



Repeat steps 1-46 to install the opposite side of the widebody kit.

Installation is now complete.

STEP 21



Fit the fender flare to the vehicle until all of the plastic clips engage. Then, secure the flare to the inner fender liner using (8) M6 bolts and (8) M6 flat washers.

STEP 22

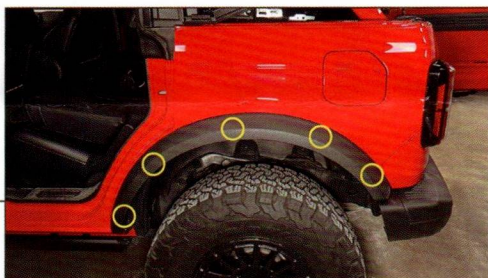


Splice the rock lighting into the vehicle parking lamp circuits in the headlight following the diagram below.

| LED Rock Lights | Vehicle Headlight Harness |
|-----------------|---------------------------------------|
| Red (+) | Green/Orange (LH) / Brown/Yellow (RH) |
| Black (-) | Black/Gray |

Re-install the grille, painted trim, and radiator cover to the vehicle reusing the original hardware.

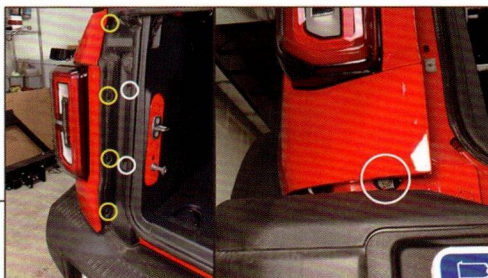
STEP 23



Remove the vehicle soft top/hard top from the vehicle following the OEM top removal procedure.

Reach under the vehicle fender flare and turn the flare retaining latches 90°. Then, firmly pull the fender flare away from the vehicle.

STEP 24



Open the tailgate. Remove (4) plastic screw clips and (2) 10mm screws. Then, remove the trim panel.

In-between the tail light trim panel and the rear bumper, remove (1) 10mm screw. Lowering the rear bumper may be necessary for adequate socket clearance.

STEP 25



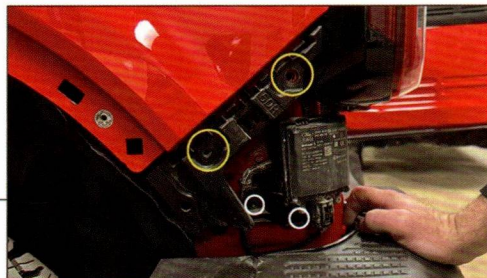
Firmly pull the inside portion of the tail light trim panel away from the tail light mounting bracket. Then, pull the tail light trim panel away from the quarter panel. Set the trim panel aside.

STEP 26



Remove the (6) plastic screw clips and (1) 7mm screw securing the fender liner to the outer edge of the quarter panel.

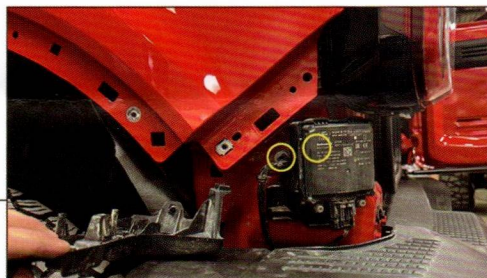
STEP 27



Remove (2) 10mm bolts from the plastic bracket. Remove the plastic bracket from the quarter panel by pressing the center tabs inwards.

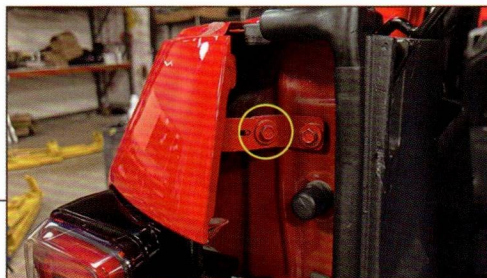
If equipped, remove (2) T-20 Torx screws securing the BLIS module to the vehicle.

STEP 28



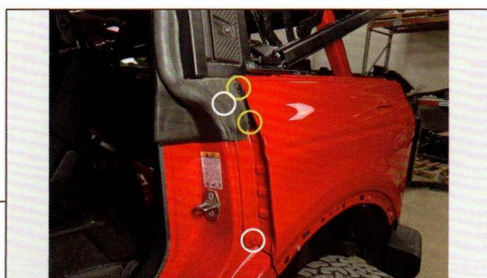
Remove (2) 10mm bolts (behind the BLIS module) securing the quarter panel to the rear of the vehicle.

STEP 29



Above the tail light, remove (1) 10mm bolt securing the quarter panel to the body.

STEP 30



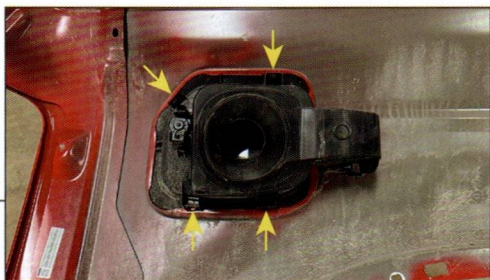
Use a panel removal tool to remove the plastic clips securing the door weatherseal to the quarter panel. Then, remove the (2) 10mm bolts securing the quarter panel to the vehicle.

STEP 31



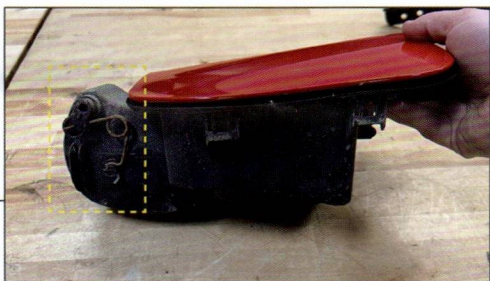
Remove the remaining (6) 10mm bolts securing the quarter panel to the vehicle, and set the quarter panel on a soft workable surface.

STEP 32



Using a pry tool, press the plastic retaining tabs securing the fuel filler assembly to the quarter panel. Place the assembly on a workable surface.

STEP 33



Remove the metal spring from the fuel door assembly. Then, remove the hinge pin securing the fuel door arm to the fuel filler assembly.

The hinge pin may need to be cut in order to be removed from the assembly.

STEP 34



Fit the included fuel door arm to the vehicle fuel filler assembly, and secure into place using the included hinge pin. Then, fit the original metal spring into place.

STEP 35



Fit the upper quarter panel reinforcement bracket to the new quarter panel, and secure into place using (3) M6 bolts, (3) M6 flat washers, and (3) M6 clip nuts.

STEP 36



Loosely fit the new quarter panel to the vehicle using the original mounting bolts. Adjust the quarter panel to align with the tailgate and rear door, and then tighten the hardware to secure the quarter panel into place.

With the quarter panel fully tightened, secure the BLIS module using the original (2) T-20 Torx screws, if applicable.

STEP 37



Fit (1) M6 clip nut into cutout at the rear edge of the quarter panel.

STEP 38



Fit the included quarter panel plastic panel in place, and secure using (1) M6 bolt and (1) M6 flat washer into the hole with the previously placed clip nut. Secure the upper portion of the plastic bracket into place using the OEM tail light bolt.

STEP 39



Place the original tail light trim panel on a workable surface. Press the (2) plastic tabs to remove the lower painted section from the trim panel core. Then, remove the (2) white clips from the lower painted section.

Transfer the (2) white clips to the included tail light trim lower panel, then fit the core assembly to the included tail light trim lower panel.

STEP 40



Install the tail light trim panel to the vehicle and secure to the vehicle using the original hardware.