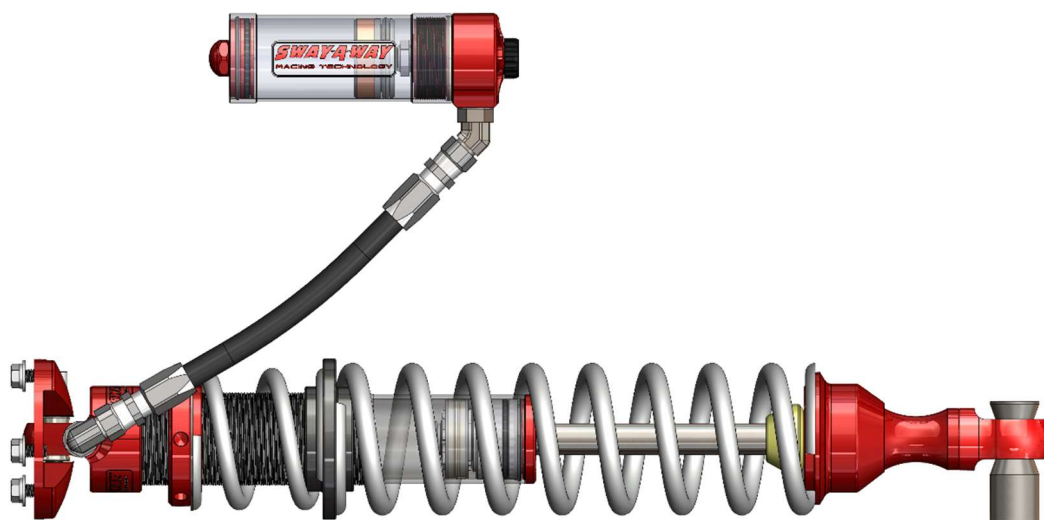


Sway-A-Way 2.5 Rear Coilover Kit Installation Instructions For 6th Gen Ford Bronco

Product Number: 302-0056-13-CA

Installation Time: 2-3 HRS.



Part Number	Description	Qty.
56000-1523L-CA	Shock, 2.5" Coilover RR-CA, 21+ Bronco Rear Left	1
56000-1523R-CA	Shock, 2.5" Coilover RR-CA, 21+ Bronco Rear Right	1
50003-203	Spanner Wrench	1
81576-L	Reservoir Bracket, 21+ Ford Bronco Rear Left	1
81576-R	Reservoir Bracket, 21+ Ford Bronco Rear Right	1
80601	Bolt, 3/8-16X1 Hex Gr 5 Plt	4
00P-0C1744-A	Washer, Flat: 1.00" OD, 7/16" ID, Zn Plate	8
00P-0C1113-A	Nut, Nyloc: 3/8-16 Gr 5, Zn Plt	4
56200-008	Hose Clamp, #40, 2" - 3", SS	4

Recommended Tools:

Sockets: 9/16", 8mm, 19mm, 27mm

Wrenches: 9/16", 7mm, 15mm, 30mm

Screwdriver: Philips

Preferable Equipment:

- 2-Post Lift
- Screw Jack
- Impact Wrench
- Breaker Bar

1. Raise the vehicle with a 2-post lift (preferable), or floor jack. If using a floor jack, place jack stands in the factory designated jack points.



2. Using a **19mm** socket, undo the lug nuts and remove the wheels.



3. It is recommended to complete **Steps 4-15** on one side of the vehicle before proceeding to repeat the steps for the other side.
4. Using a **7mm** wrench and **Philips Head** screwdriver, remove the fender liner fasteners. There should be three hex head screws towards the front, one wing nut at the top center, and the rest will be Philips head clips.



NOTE: Remove the wing nut last, so the fender liner will drop as you remove it.



5. Using a **15mm** wrench, remove all but one of the top hat mounting nuts from the factory coilover. Leave one nut loose, but still attached.



6. Using a **27mm** socket and **30mm** wrench, remove the lower coilover mounting bolt and nut.



7. Slowly remove the last top hat mounting nut, while supporting the coilover, and remove the coilover assembly by dropping it downwards and forwards.

8. Using the included 3/8" bolts, nyloc nuts, and washers, mount the corresponding reservoir bracket to the frame as shown in the below photo, (driver side bracket shown below). The washers should be installed between the bracket and the bolt head on the outside, and between the frame and the nyloc nut on the inside.



NOTE: You may need to adjust the bracket while tightening in order to get the bracket to sit parallel with the body mount as shown in the below photo.



9. Using a **9/16"** socket and wrench, torque the 3/8" reservoir mounting bolts to 30 Ft-Lbs.
10. Loosely attach the included reservoir hose clamps as shown in the below photo.



11. Loosely attach the three top hat 3/8" bolts, lock washers, and washers in the designated holes as shown in the below photos.



Driver Side



Passenger Side

12. Using a **27mm** socket and **30mm** wrench, install the factory lower coilover bolt and nut with the included misalignment spacers. Verify that the orientation of the misalignment spacers matches the below photos. Torque the bolt and nut to 350 Ft-Lbs.



Driver Side



Passenger Side

13. Using a **9/16"** wrench, torque the three top hat 3/8" bolts to 50 Ft-Lbs.

14. Using an **8mm** socket, mount the reservoir to the bracket as shown in the below photo.



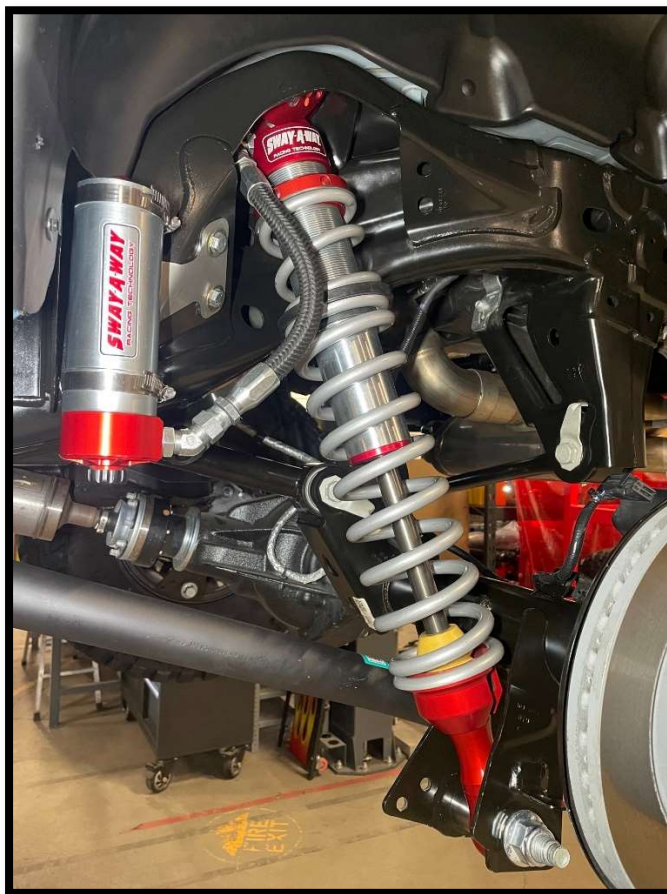
NOTE: You may need to adjust the reservoir while tightening in order to clock the 45 degree reservoir fitting inline with the frame. If mounted properly, the fitting should be clocked inline with the frame as shown in the below photo.



15. Using a **7mm** wrench and **Philips Head** screwdriver, reinstall the fender liner fasteners. There should be three hex head screws towards the front, one wing nut at the top center, and the rest will be Philips head clips.
16. Repeat **Steps 4-15** on the other side of the vehicle.

17. Using a **19mm** socket, reinstall the lug nuts and wheels.
18. Lower the vehicle on the ground and torque the lug nuts to 100 Ft-Lbs.
19. If you are happy with the achieved lift, your installation is now complete! If you would like to adjust your lift height, lift the vehicle back up with a jack, loosen the set screw on the preload collar, then using the included spanner wrench, spin the preload collar. 6 full turns (or 1/2" of adjustment) of the collar, will achieve 5/8" of lift or drop. Remember to tighten the set screw when all the adjustments have been made.

NOTE: It is recommended to drive the vehicle for 5 miles and check for loose hardware. Recheck after another 50 miles.



Part Torqued	Socket Size	Torque Value
Reservoir Bracket Mounting Bolts	9/16"	30 Ft-Lbs
Sway-A-Way Coilover Top Hat Mounting Bolts	9/16"	50 Ft-Lbs
Lower Coilover Mounting Bolts	27mm	350 Ft-Lbs
Wheel Lug Nuts	19mm	100 Ft-Lbs

THIS PAGE LEFT BLANK INTENTIONALLY

THIS PAGE LEFT BLANK INTENTIONALLY



advanced CONTROL engineering, inc.

Corona, CA 92879

<https://afepower.com/contact>