

Heretic

BEYOND LUMENS

Ford Bronco 21+ Fog Light Installation Instructions



Heretic

1168 West 500 North Suite 500
Centerville UT, 84014
801-725-4824
Support@hereticstudio.com

Heretic

BEYOND LUMENS

Tools Needed for Install:

Basic tool set

Recommended Items for Install:

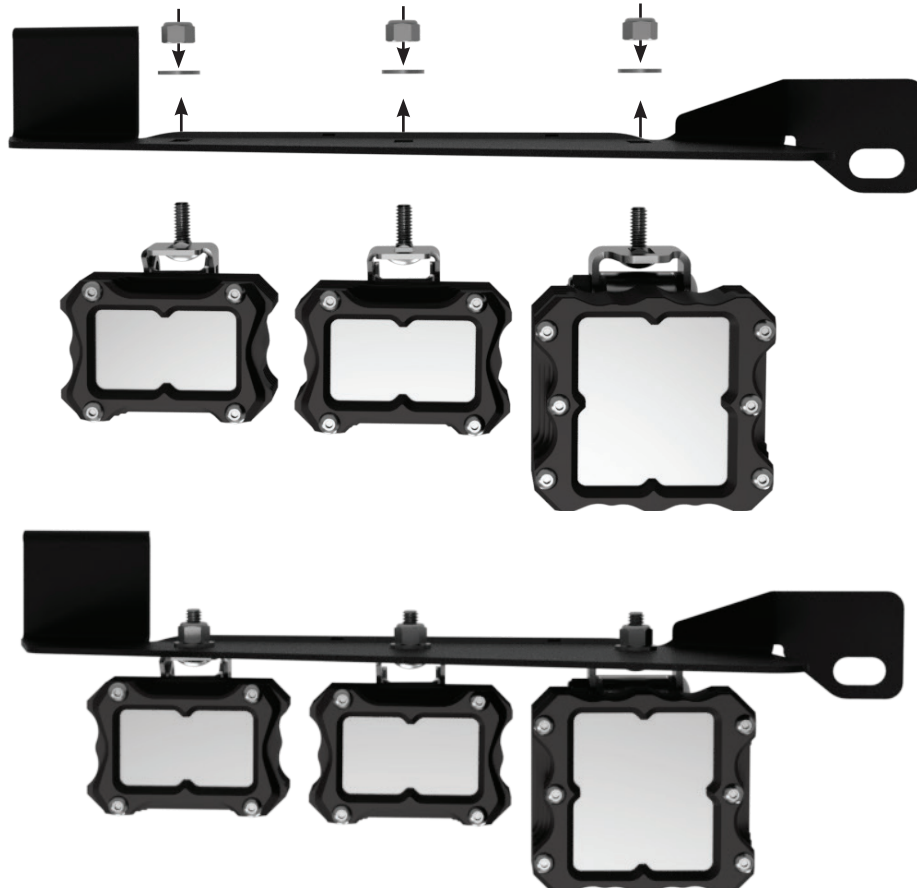
Basic Wire Connection Kit

Kit Contents: 2x Spacer 2x Light Bracket 6x Washer
2x M8 Flange Nut 6x 1/4 - 20 carriage bolt 2x Wire Harness
2x Harness Y-Splitter 6x 1/4 - 20 nyloc

Ford Bronco ('21+)

Step 1: Assemble the brackets. Using the supplied carriage, nyloc bolt, and washer, attach the lights to the bracket using a 7/16 wrench. When connecting the lights, ensure that the Quattro is located in the innermost mounting slot, as shown in the diagram below. Leave the bolts slightly loose for adjustments later in the installation.

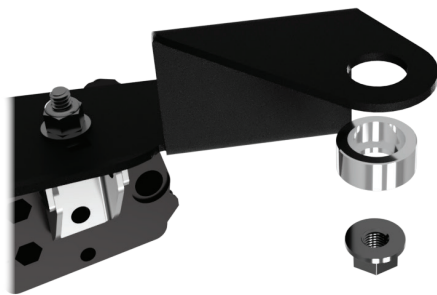
PASSENGER SIDE



Step 2: Before installing the bracket with the lights, remove the 13 mm bolt from the backside of the bumper. Once the 13mm bolt has been removed, locate the other mounting point. It is located on the outer side of the fog light pocket. There won't be any hardware to remove in this location. The bracket will sit around the bolt.



Step 3: Install the bracket with the lights attached into the fog light pocket. Once the bracket is lined up with the mounting locations, install the 13mm bolt. Next, using the supplied spacer and 13mm flange nut, place the bracket over the bolt in the picture, followed by the spacer and then the flange nut. Remember that the spacer will need to sit with the larger opening touching the bracket and the smaller opening touching the flange nut.

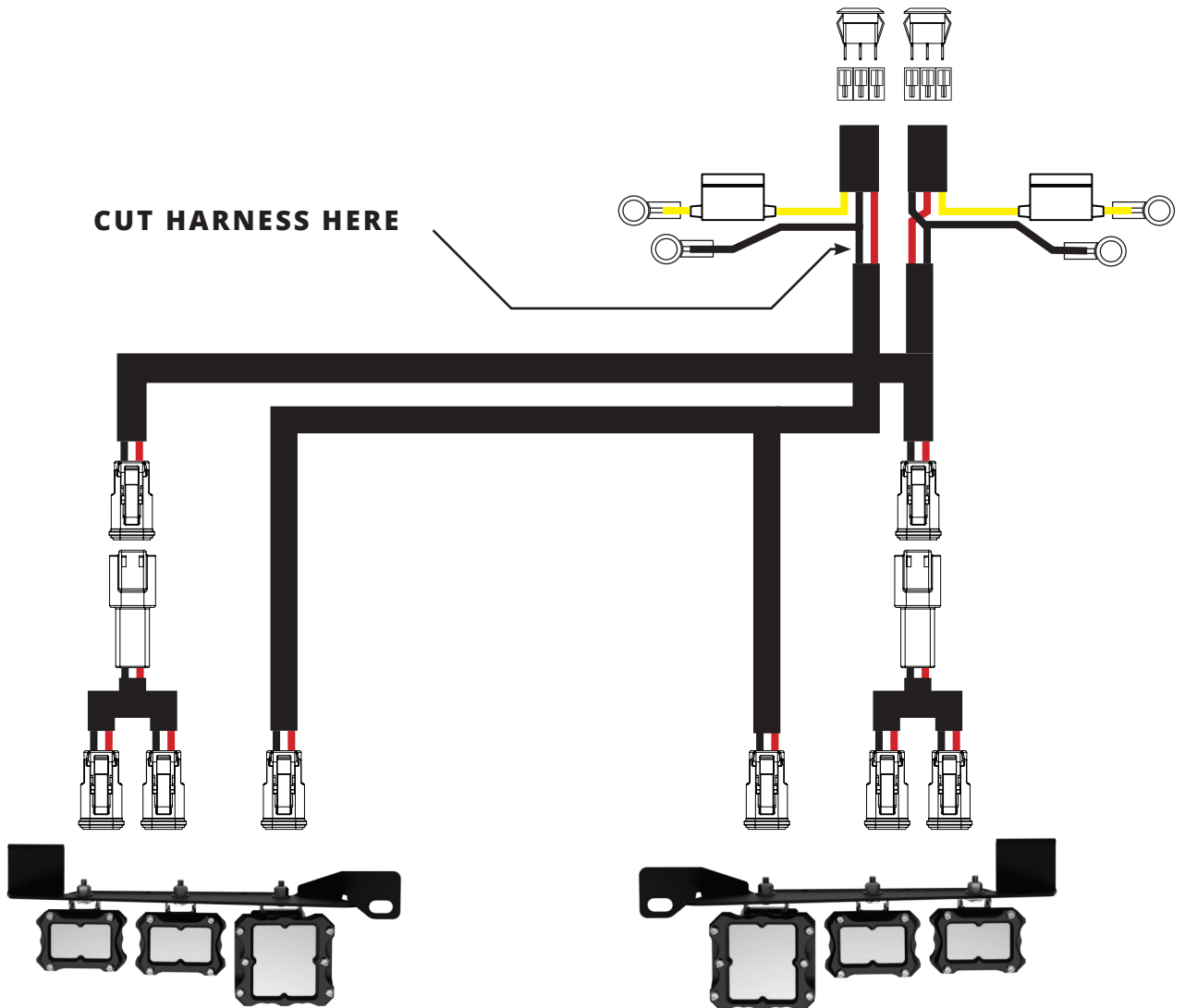


Repeat the same process for the driver side.

Step 4: With the lights installed, route the harness up to the factory AUX switches installing zip ties along the way. The harness supplied with the kit can be used with the factory AUX switches or as a stand-alone harness.



To connect the harness to the factory AUX switches, the harness will need to be trimmed. The supplied harness comes with a pre-wired switch that will need to be removed. To remove the switch, cut the harness in the indicated area leaving as much length as necessary to reach the factory AUX wires. Connect the red wires to the desired AUX wires and attach the black wires to a ground source.



IDENTIFYING THE AUX SWITCH WIRING:

AUX 1	YELLOW	30A
AUX 2	GREEN/BROWN	15A
AUX 3	VIOLET/GREEN	10A
AUX 4	BROWN	10A
AUX 5	BLUE/ORANGE	10A
AUX 6	YELLOW/ORANGE	10A

Step 5: With the lights mounted and connected to power, test the lights' functionality by turning the vehicle's ignition on and switching the corresponding AUX switch to the on position. Once functionality has been verified, adjust the angle of the lights to the desired position and tighten all of the 7/16 nyloc nuts.

Your install is now complete! Thanks for choosing Heretic!



@hereticstudio

Heretic
BEYOND LUMENS

Heretic

1168 West 500 North Suite 500
Centerville UT, 84014
801-725-4824
Support@hereticstudio.com