



TRAIL FORCE FRONT BUMPER

(2021-2024+ BRONCO)

INSTALLATION INSTRUCTIONS

CONTENTS

- (1) Front Bumper
- (2) 3/4" D-Rings
- (1) Over Rider Bar
- (1) Rear Bumper Cover Plate
- (1) LH End Cap
- (1) RH End Cap
- (1) LH Bumper Mounting Nut Plate
- (1) RH Bumper Mounting Nut Plate
- (1) Adaptive Cruise Control (ACC) Block Off Plate
- (4) Proximity Sensor Install Kits
- (6) M12x1.75 x 50mm Bolts
- (6) M12 Lock Washers
- (6) M12 Flat Washers
- (6) M8x1.25 x 25mm Allen Bolts
- (12) M8 Flat Washers
- (6) M8 Lock Washers
- (6) M8 Flange Nuts
- (3) M6x1.00 x 30mm Allen Bolts
- (9) M6x1.00 x 20mm Allen Bolts
- (8) M6x1.00 x 20mm Hex Bolts
- (20) M6 Lock Washers
- (40) M6 Flat Washers
- (20) M6 Flange Nuts
- (1) 4mm Allen Key
- (1) 5mm Allen Key

TOOLS REQUIRED

- 8mm, 10mm, 13mm, 15mm Sockets
- Ratchet
- 4mm, 5mm Allen Key
- Plastic Panel Removal Tool

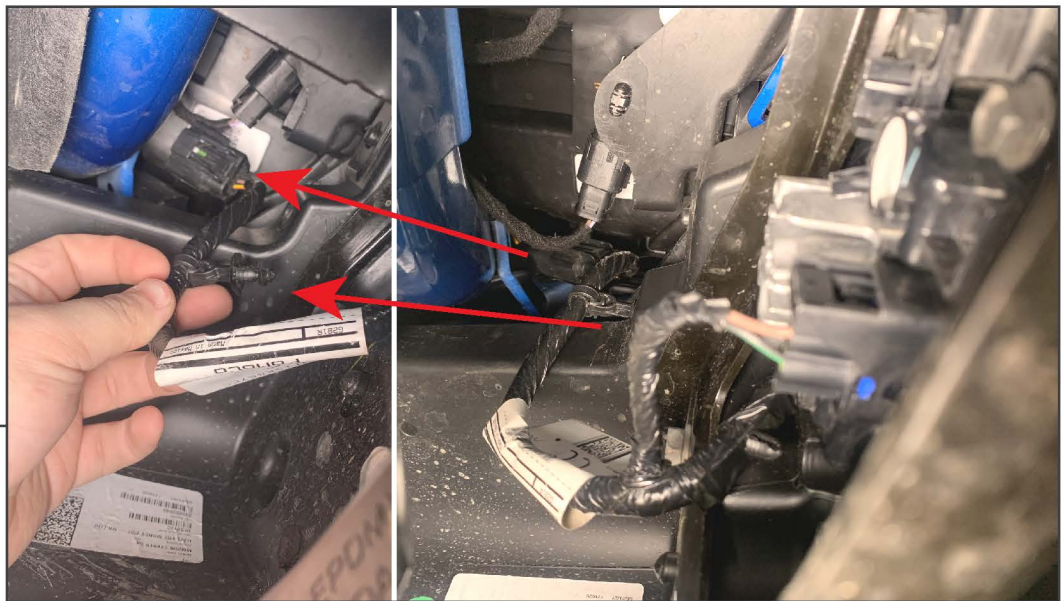
SKU # FB50383
Edited: 08/04/2024

STEP 1



Remove (6) 15mm bolts from the lower splash shield.

STEP 2



From under the bumper, reach upwards and unplug the fog light harness main connector located under the LH (Driver Side) headlight. Pull the plastic harness retainer from the vehicle.



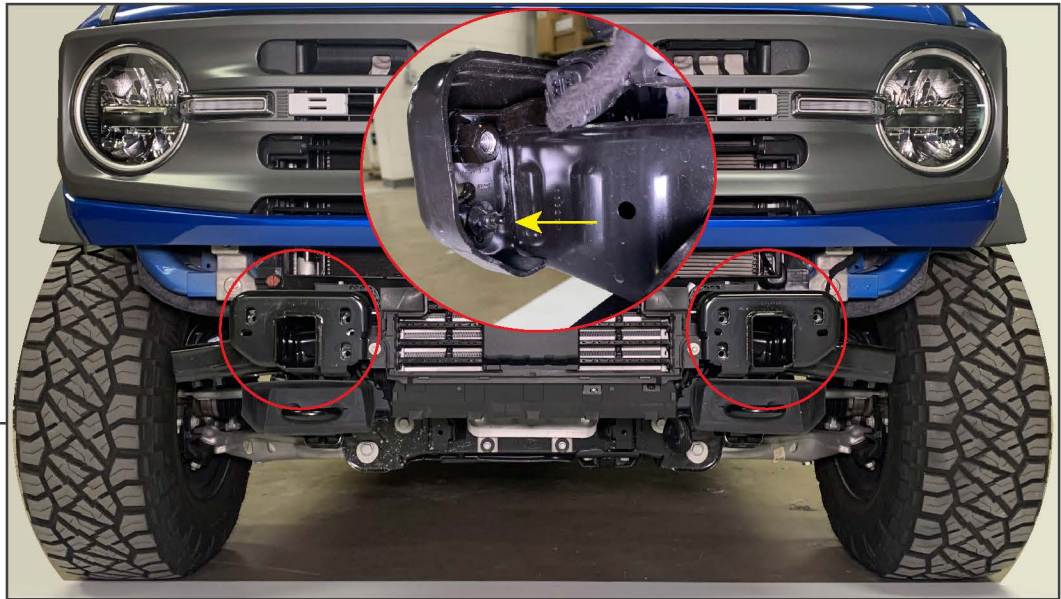
STEP 3

Remove the (2) plastic bumper covers using a plastic panel removal tool to reveal the bumper mounting hardware.



STEP 4

Remove (6) 15mm bolts from the front bumper, and remove the bumper assembly from the vehicle.



STEP 5

Unthread the (1) plastic wing nut from each of the bumper mounting nut plates, and remove each nut plate from the vehicle.

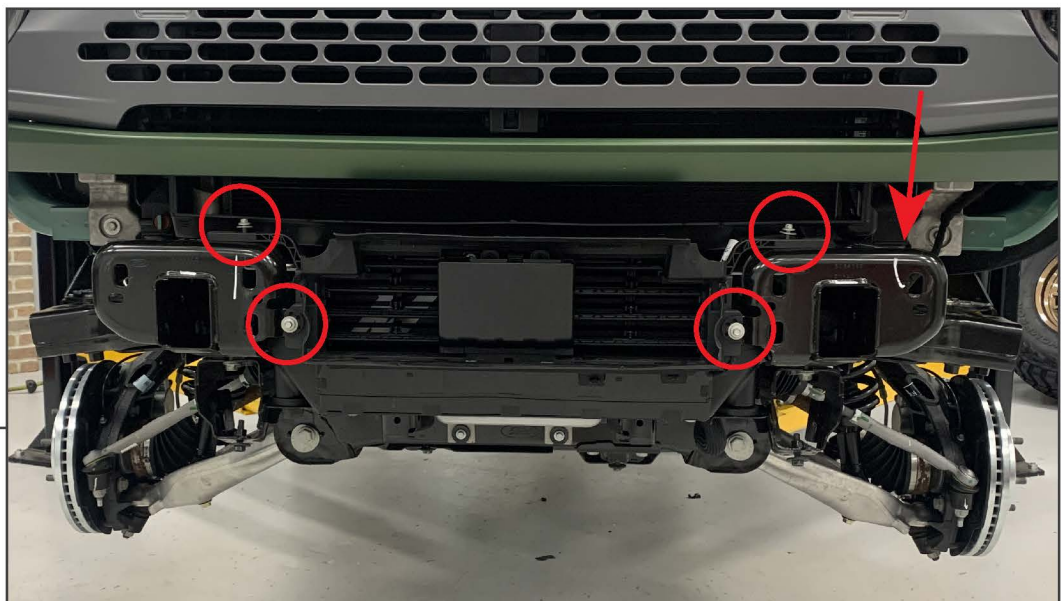


STEP 6

Unplug each fog light from the main harness, and remove each fog light from the bumper by removing (4) 10mm bolts.

**STEP 7**

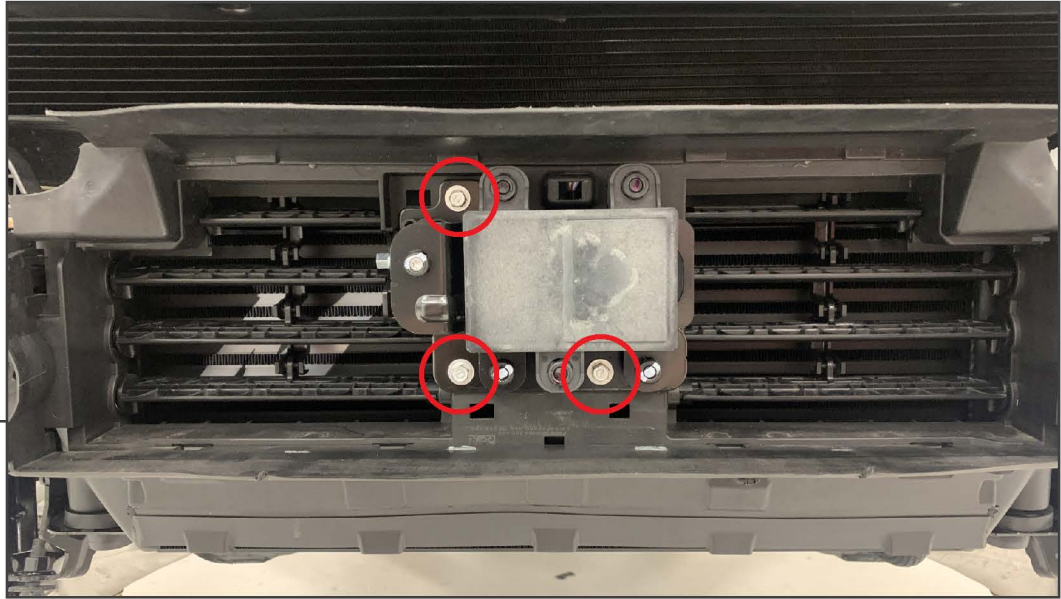
Remove (4) 10mm bolts and (4) 15mm bolts to remove the rear bumper brace to release the fog light harness from the bumper assembly.

**STEP 8
(ACC)****For vehicles with Adaptive Cruise Control (ACC):**

With the bumper removed, locate the front lower shutter assembly. Unplug the wiring harness connector along the LH side of the vehicle, and remove (4) 8mm bolts from the shutter assembly. Remove the shutter assembly from the vehicle and place on a workable surface.

For vehicles without Adaptive Cruise Control (ACC):

Skip to Step 14.



**STEP 9
(ACC)**

Remove (3) 8mm bolts from the Adaptive Cruise Control [ACC] module.

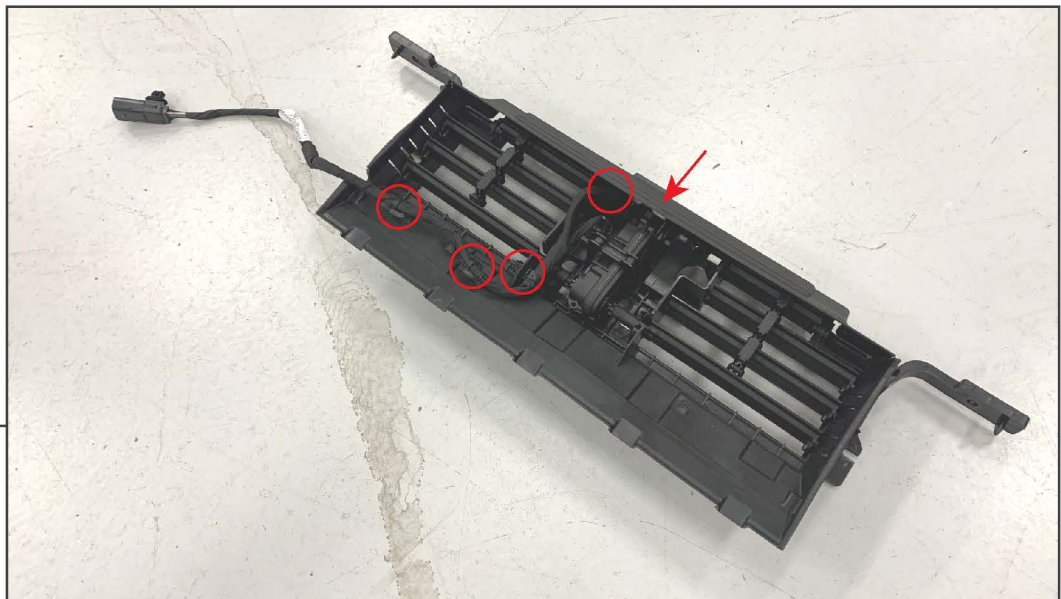


**STEP 10
(ACC)**

Unplug the ACC module from the shutter assembly wiring harness.

**STEP 11
(ACC)**

Using a pry tool, gently pry the ACC module away from the retaining bracket. The brackets are secured to the module using friction-fit ball studs.

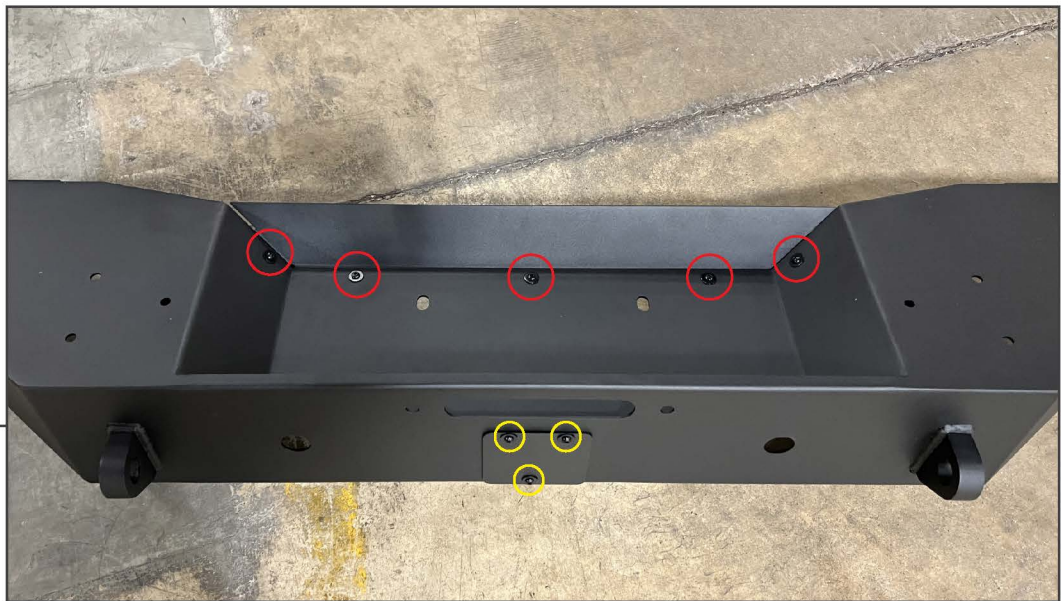
**STEP 12
(ACC)**

Unplug the shutter assembly motor by sliding the red lock, and pressing the tab. Then, use a pry tool to dislodge the wiring harness from the shutter assembly. With the harness removed, mount the shutter assembly to the vehicle using the original (4) 8mm bolts.

**STEP 13
(ACC)**

Mount the ACC module to the inside or outside of the bumper using (3) M6 x 30mm bolts, (6) M6 flat washers, and (3) M6 flange nuts, tighten until secure.

With the bumper mounted to the vehicle, route the wiring harness to the ACC module, shutter assembly motor, and the vehicle chassis connector. Clip the lower (3) clips into the vehicle shutter assembly to retain the harness. **Ensure the harness is routed away from any moving parts of the shutter assembly and is not stressed when mounted.

**STEP 14**

Vehicles without Adaptive Cruise Control (ACC): Secure the block off plate to the bumper using (3) M6 x 30mm Allen bolts, (6) M6 flat washers, and (3) M6 flange nuts.

Fit and secure the rear bumper plate to the bumper using (5) M6 x 20mm Allen bolts, (5) M6 lock washers, (10) M6 flat washers, and (5) M6 flange nuts.

**STEP 15**

Fit and secure the over rider bar to the pre-drilled holes in the top of the bumper using (6) M8 x 25mm Allen bolts, (6) M8 lock washers, (12) M8 flat washers, and (6) M8 flange nuts. Tighten the hardware evenly until secure.

**STEP 16**

Fit and secure the original fog lights into the bumper using (4) M6 x 20mm hex bolts, (4) M6 lock washers, (8) M6 flat washers, and (4) M6 flange nuts per fog light.

STEP 17**For vehicles with Front Proximity Sensors:**

If equipped with bumper sensors, unplug the sensors by pressing the connector tab inwards while pulling up. Disconnect the wiring harness retaining clips from the bumper using a plastic panel removal tool and remove the harness.

For vehicles without Front Proximity Sensors:

Skip to Step 22.

STEP 18

Remove the sensors from the bumper by using a small flat head screwdriver or pick to gently pry back the mounting tabs.

**STEP 19**

Remove the rubber gasket from around the sensor. Install the provided foam ring gasket around the sensor.

**STEP 20****Mounting Option 1:**

Place the sensor into the designated port, ensuring the mounting tabs are within the slots. Adhere (1) rubber grommet to the sensor using the attached adhesive. Place (1) foam pad onto the rubber grommet. Place the (1) plastic cap onto the assembly, ensuring the (2) tabs lock into place to secure the sensor tightly to the port.

STEP 21



Mounting Option 2:

Place the sensor into the designated port, ensuring the mounting tabs are within the slots. Using (2) Phillips screws, gently tighten the screws until moderate pressure is on the sides of the sensor to hold the sensor into place.

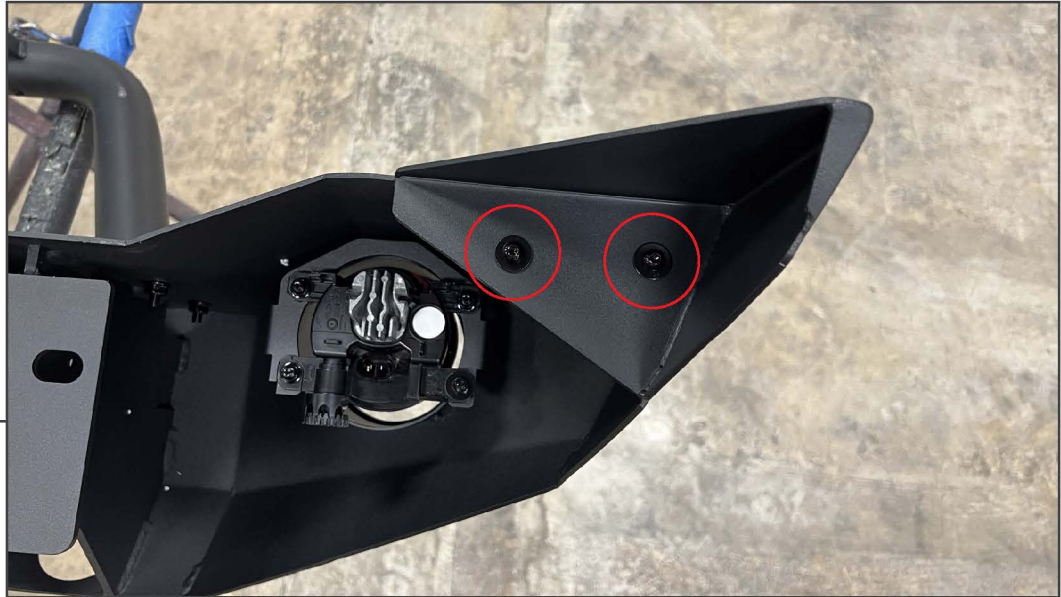
Note: Do NOT over-tighten the screws as the sensor can become damaged.

STEP 22



Mounting Option 3 (No Sensor):

Press the plastic cap into the backup sensor housing through the face of the bumper.

**STEP 23**

Fit and secure the LH and RH bumper end caps using (2) M6 x 20mm Allen bolts, (2) M6 lock washers, (4) M6 flat washers, and (2) M6 flange nuts per end cap.

Transfer the original front bumper wiring harness to the new bumper, and route the harness away from any mounting points. Harness can also be installed after the bumper is fitted to the vehicle, if desired.

**STEP 24**

Fit the included nut plates behind the vehicle frame rails. With assistance, lift the bumper to the vehicle frame rails and loosely secure into place using (6) M12 x 50mm bolts, (6) M12 lock washers, and (6) M12 flat washers.



STEP 25

Install the (2) 3/4" D-Rings to the bumper, tighten into place. Install a winch to the bumper using the pre-drilled holes (winch sold separately).

Installation is now complete.