



TAILGATE FOLDING TABLE

(2021-2024+ BRONCO)

INSTALLATION INSTRUCTIONS

CONTENTS

- (1) Tailgate Table Tray
- (1) Upper Mounting Plate
- (1) Lower Mounting Plate
- (2) Hanging Straps
- (2) Cup Holder Brackets
- (2) Foam Strips
- (2) Nut Brackets
- (2) M6x1.00 x 20mm 'T' Studs
- (4) M6x1.00 x 20mm Allen Bolts
- (2) M6x1.00 x 25mm Allen Bolts
- (2) M6 Spacers
- (4) M5x0.8 x 14mm Allen Bolts
- (4) M5x0.8 x 15mm Conical Bolts
- (4) M5x0.8 x 20mm 'T' Studs
- (16) M5 Flat Washers
- (8) M5 Lock Nuts
- (4) M5 Lock Washers
- (2) Nylon Strap Spacers
- (1) 2.5mm Allen Key
- (1) 4mm Allen Key
- (8) M6x12x1.6mm Flat Washers
- (2) M6x18x1.6mm Flat Washers
- (6) M6 Lock Washers
- (2) M6 Plastic Retainers
- (2) M6 Lock Nuts
- (2) M6 Hex Nuts
- (4) M5 Hex Nuts

TOOLS REQUIRED

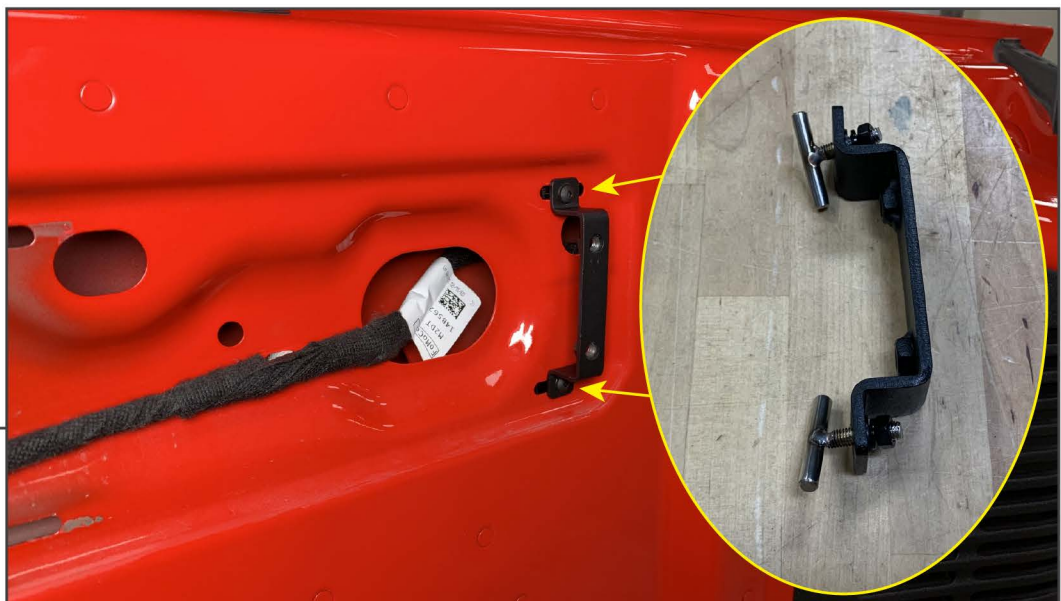
- 10mm Socket
- Ratchet
- Panel Removal Tool
- 2.5mm, 4mm Allen Keys (Provided)
- Exterior Detailer & Microfiber Cloth

SKU # FB37116
Edited: 10/25/2023



STEP 1

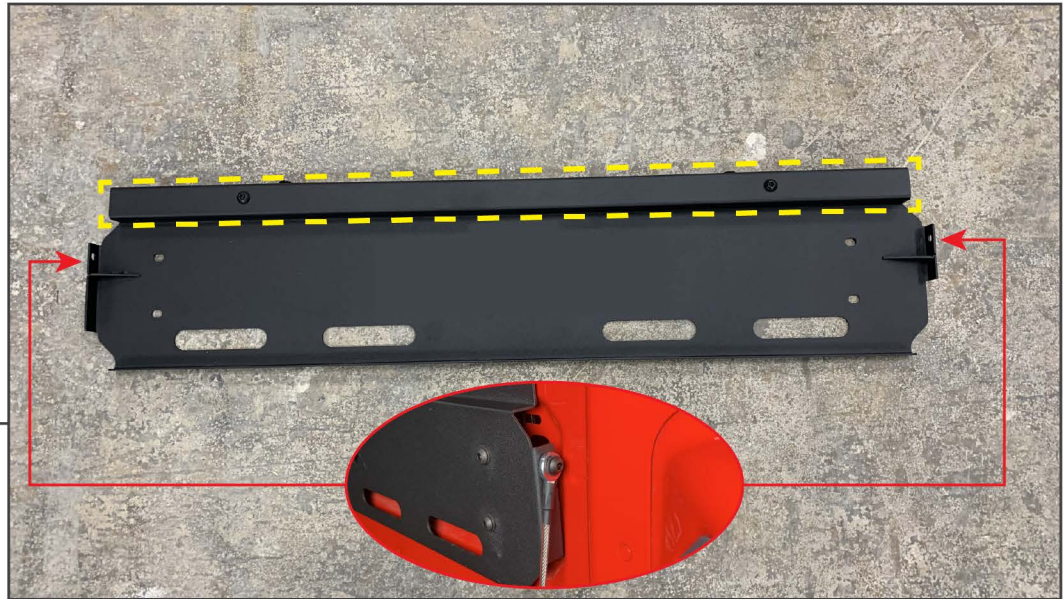
Open the vehicle tailgate. Clean the tailgate using exterior detailer and a microfiber cloth. Once clean and dry, dislodge the (4) clips to remove the upper plastic panel from the vehicle.



STEP 2

Using (2) M5 x 20mm 'T' studs, (2) M5 flat washers, (2) M5 lock washers, and (2) M5 hex nuts, thread the assembly onto the upper bracket. Then, fit the stud base behind the tailgate slots. Tighten each M5 hex nut until the bracket is secure. Ensure the stud base is turned 90 degrees from the slot for full engagement. Repeat this step for the remaining nut bracket on the opposite side of the tailgate.

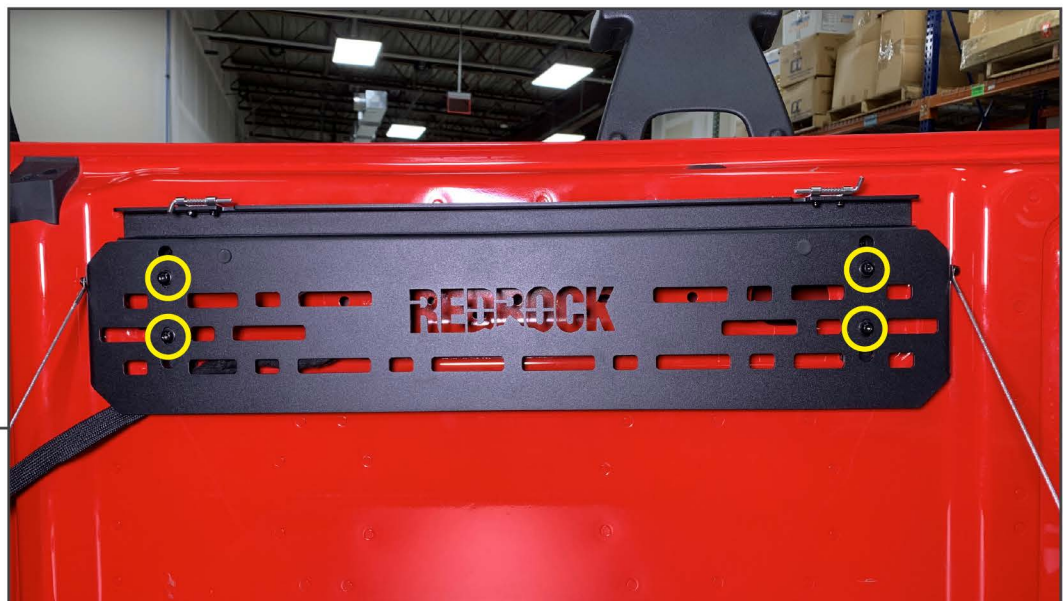
STEP 3



Install (1) foam strip on the upper and lower mounting plates to prevent the plates from directly touching the vehicle paint.

Secure the (2) hanging straps to the bolt holes along the sides of the upper mounting plate using (1) M5 x 14mm Allen bolt, (2) M5 flat washers, and (1) M5 lock nut per strap. Tighten until secure.

STEP 4



Mount the upper mounting plate to the vehicle tailgate using (4) M6 x 20mm Allen bolts, (4) M6 lock washers, (4) M6x12x1.6mm flat washers. Tighten until secure.



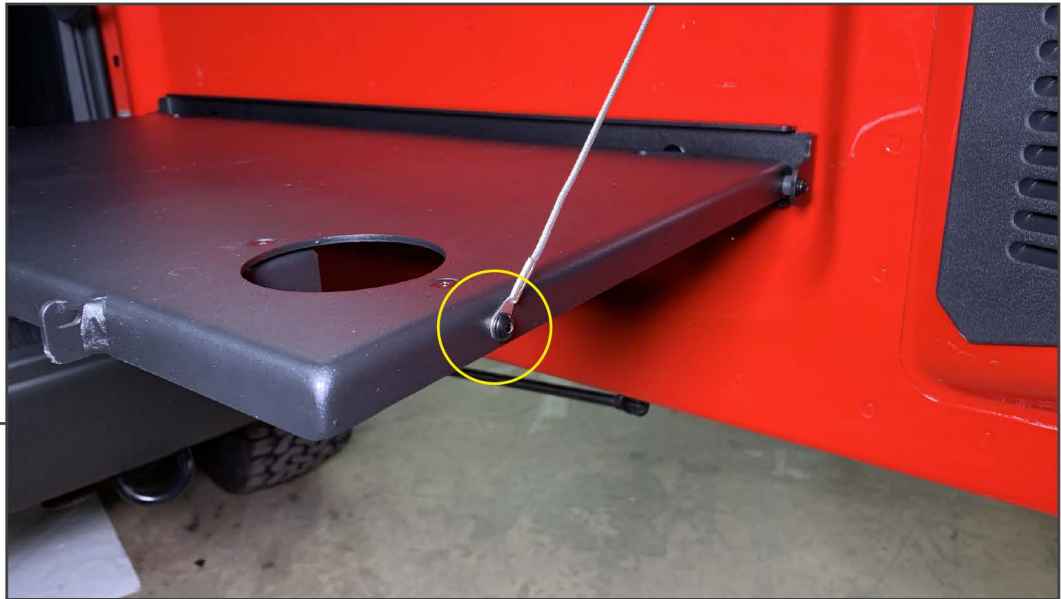
STEP 5

Mount the lower mounting plate to the vehicle tailgate using (2) M6 x 20mm 'T' studs w/ plastic retainers, (2) M6 spacers, (2) M6x18x1.6mm flat washers, (2) M6 lock washers, and (2) M6 hex nuts. Fit the stud base behind the tailgate slots, then tighten each M6 nut until the mounting plate is secure. Ensure the stud base is turned 90 degrees from the slot for full engagement.



STEP 6

Latch the tray into the latches on the upper mounting plate. Secure the tray to the lower mounting plate using (1) M6 x 25mm Allen bolt, (1) nylon strap spacer [in between the bracket and tray], (2) M6x12x1.6mm flat washers, and (1) M6 lock nut per side.



STEP 7

Secure the hanging straps to the bottom of the tray using (1) M5 x 14mm Allen bolt and (2) M5 flat washers, and (1) M5 lock nut per strap.



STEP 8

Secure each cup holder bracket to the tray using (2) M5 tapered Allen bolts, (2) M5 flat washers, and (2) M5 lock nuts.



STEP 9

Use the upper latches to secure the table when not in use.

Installation is now complete.