



DOOR SILL COVERS

(2021-2023+ BRONCO - 2 DOOR)

INSTALLATION INSTRUCTIONS

CONTENTS

(1) LH Front Entry Guard
(1) RH Front Entry Guard

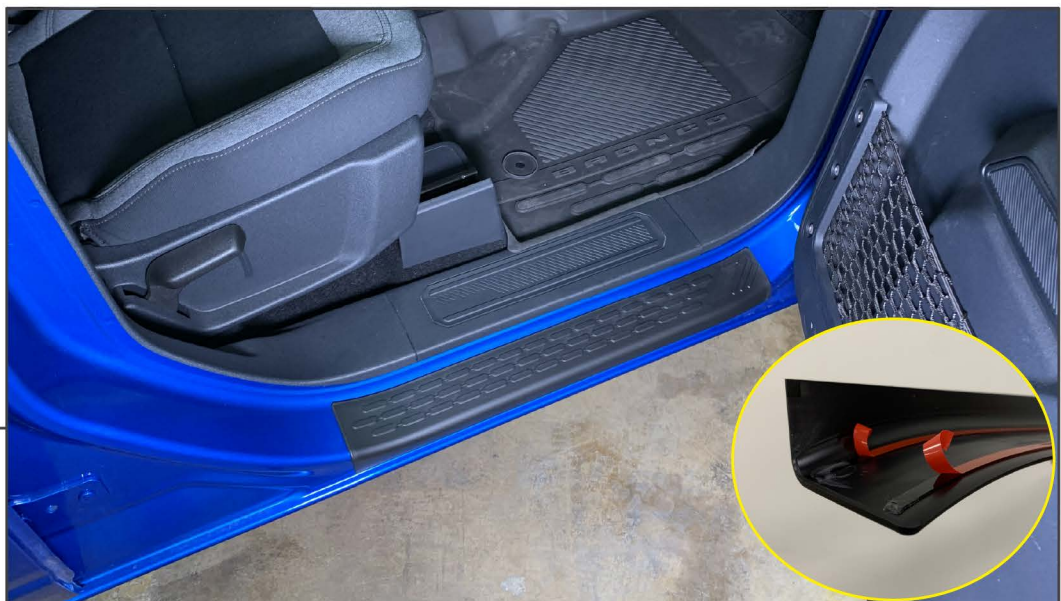
TOOLS REQUIRED

Isopropyl Alcohol
Microfiber Cloth



STEP 1

Using the designated door sill cover, test fit the cover to the vehicle before removing the adhesive tape.



STEP 2

Once familiar with fitment, clean the vehicle using isopropyl and a microfiber cloth at the cover adhesion location. Peel the double sided tape backing, and adhere the cover to the vehicle. Press the cover down firmly to ensure proper adhesion.

Repeat steps 1-2 to the remaining door sill cover. Installation is now complete.