



BRS RUNNING BOARDS

(2021-2023+ BRONCO - 2 DOOR)

INSTALLATION INSTRUCTIONS

CONTENTS

- (1) LH Running Board
- (1) RH Running Board
- (2) Front Mounting Brackets
- (4) Rear Mounting Brackets
- (4) M10x1.50 x 25mm Bolts
- (4) M10 Flat Washers
- (8) M8x1.25 x 20mm Bolts
- (8) M8 Flat Washers
- (8) M6x1.00 Nuts
- (8) M6 Flat Washers

TOOLS REQUIRED

10mm, 13mm, 15mm Sockets
Ratchet

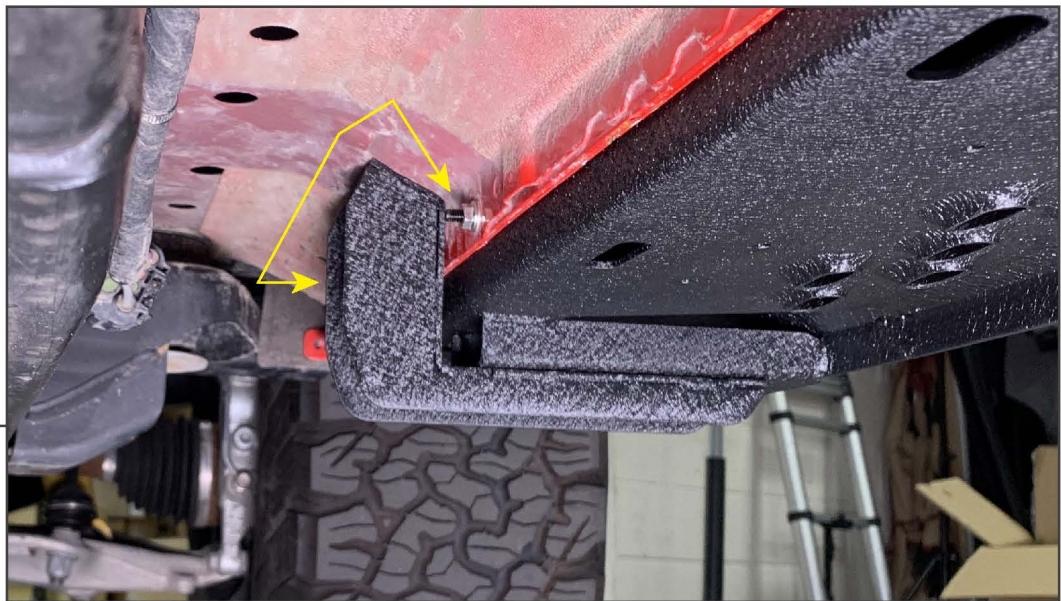
STEP 1



Identify the mounting brackets. The front mounting brackets are smaller than the rear brackets.

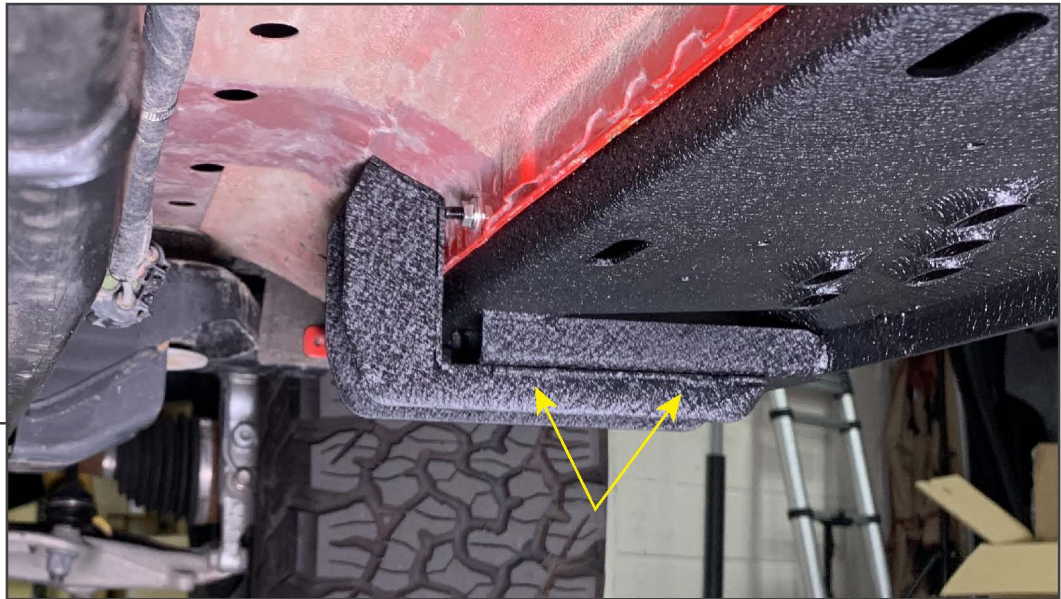
Loosely secure each mounting bracket to the vehicle using (1) M10 bolt and (1) M10 flat washer into the threaded hole under the vehicle in the rocker panel.

STEP 2



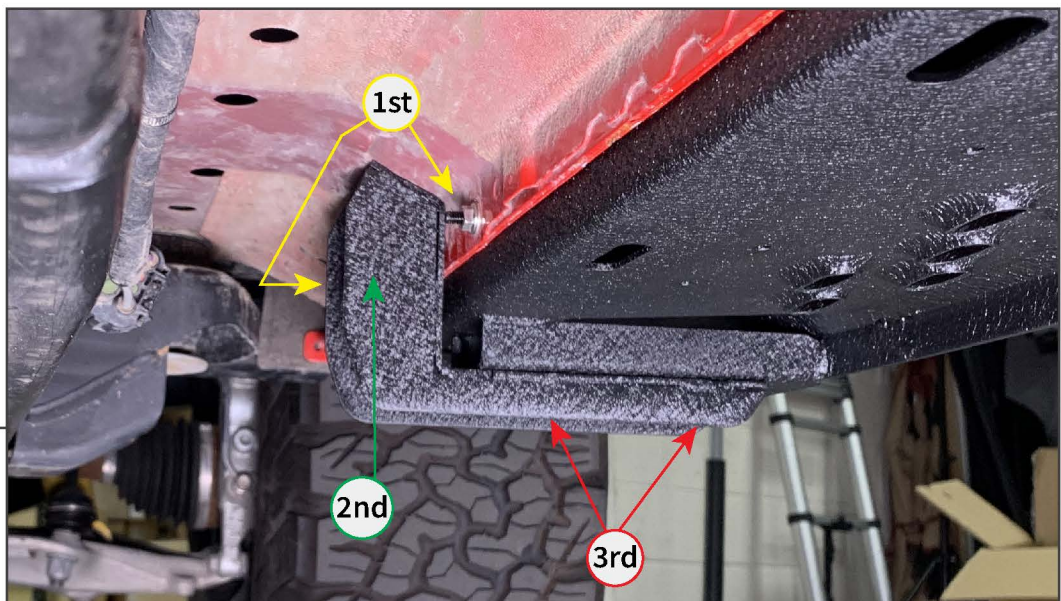
Fit the side step studs through the vehicle rocker panel pre-drilled holes. Loosely secure the side step to the vehicle rocker panel using (4) M6 flat washers and (4) M6 nuts.

STEP 3



Loosely secure the side step to the mounting brackets using the included (4) M8 bolts and (4) M8 flat washers.

STEP 4



With all mounting hardware loosely in place, begin tightening the mounting hardware following the diagram above. Tighten all hardware evenly until fully secure.



STEP 5

Repeat steps 1-5 for the remaining running board.

Installation is now complete.