



# BRS RUNNING BOARDS

(2021-2023+ BRONCO - 4 DOOR)

---

## INSTALLATION INSTRUCTIONS

### CONTENTS

---

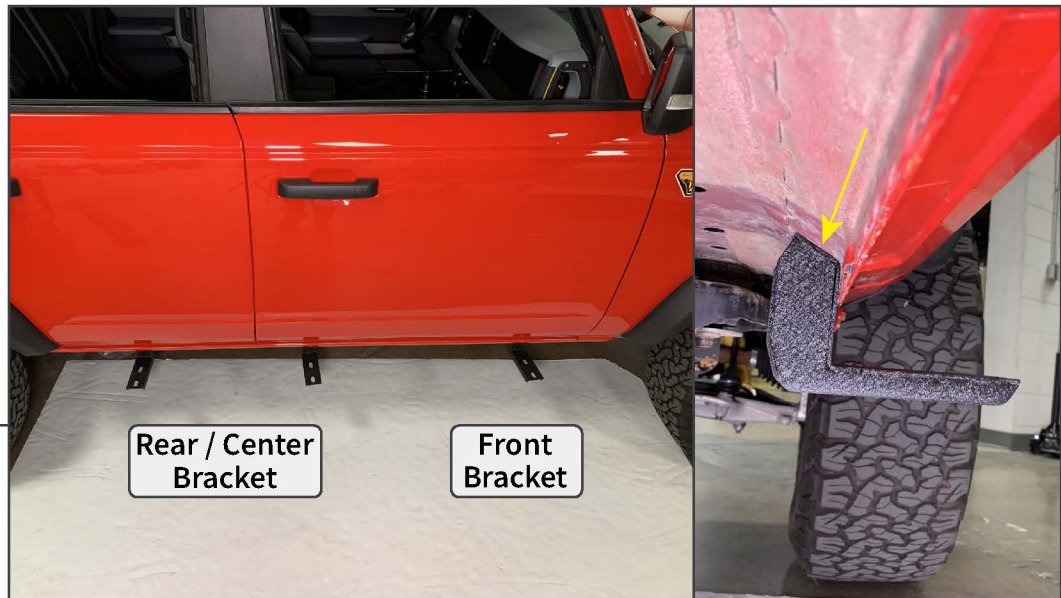
- (1) LH Running Board
- (1) RH Running Board
- (2) Front Mounting Brackets
- (4) Rear/Center Mounting Brackets
- (6) M10x1.50 x 25mm Bolts
- (6) M10 Flat Washers
- (12) M8x1.25 x 20mm Bolts
- (12) M8 Flat Washers
- (12) M6x1.00 Nuts
- (12) M6 Flat Washers

### TOOLS REQUIRED

---

10mm, 13mm, 15mm Sockets  
Ratchet

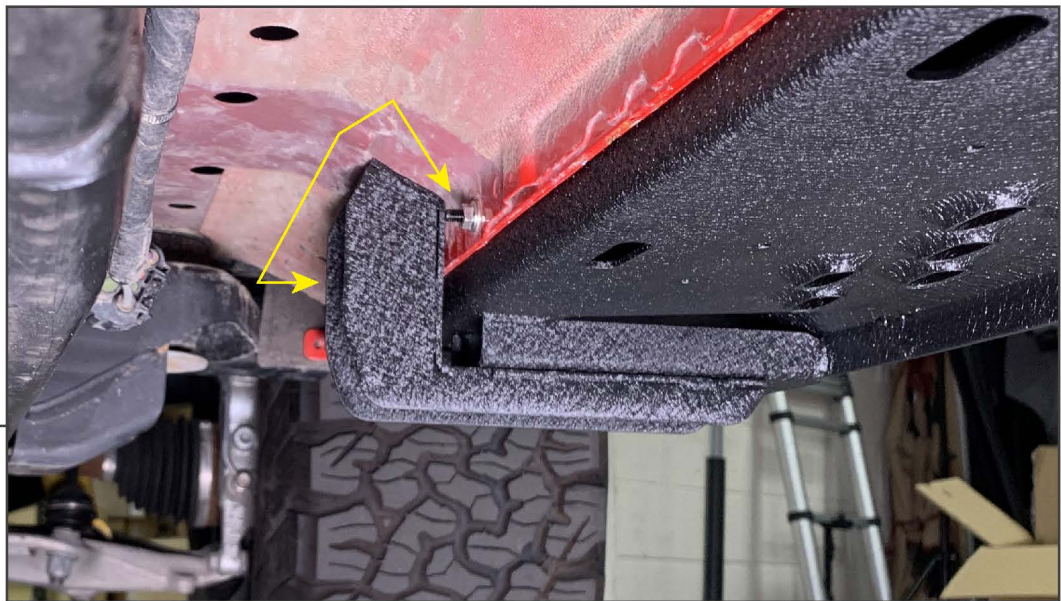
## STEP 1



Identify the mounting brackets. The front mounting brackets are smaller than the rear/center brackets.

Loosely secure each mounting bracket to the vehicle using (1) M10 bolt and (1) M10 flat washer into the threaded hole under the vehicle in the rocker panel.

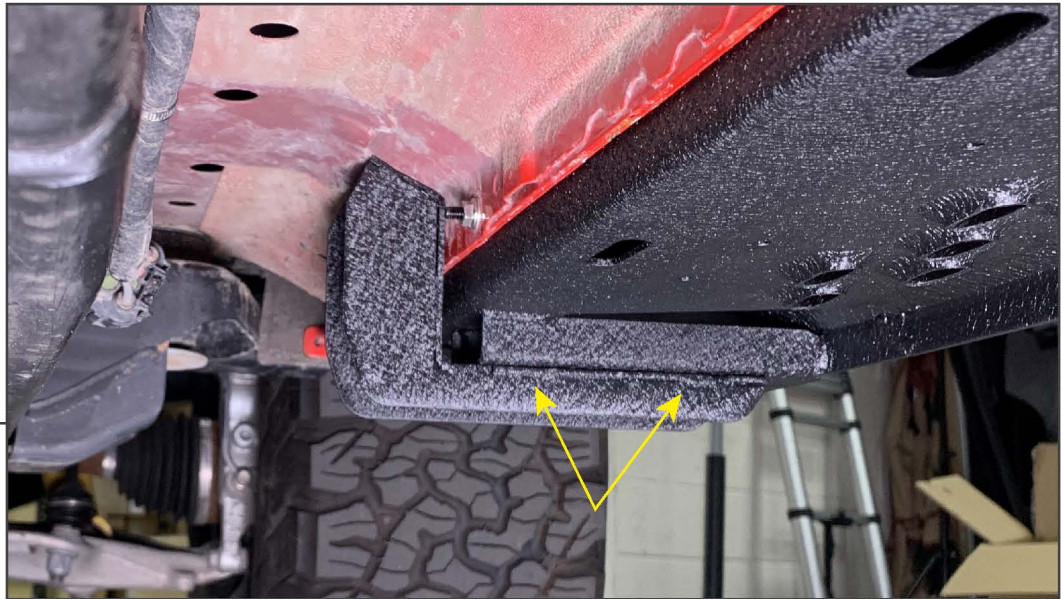
## STEP 2



Fit the side step studs through the vehicle rocker panel pre-drilled holes. Loosely secure the side step to the vehicle rocker panel using (6) M6 flat washers and (6) M6 nuts.

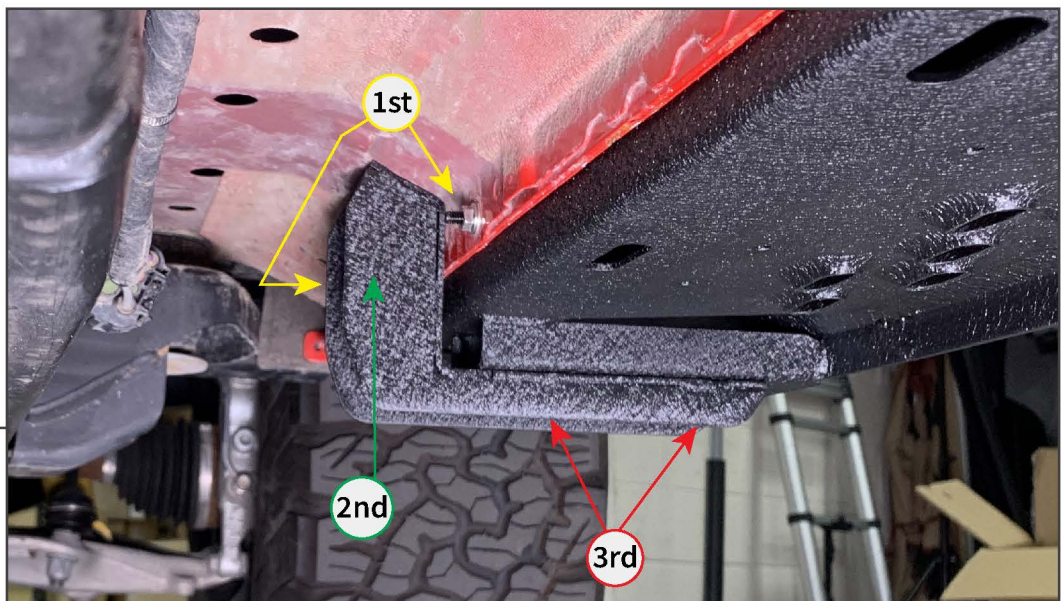


## STEP 3



Loosely secure the side step to the mounting brackets using the included (6) M8 bolts and (6) M8 flat washers.

## STEP 4



With all mounting hardware loosely in place, begin tightening the mounting hardware following the diagram above. Tighten all hardware evenly until fully secure.



---

## STEP 5

Repeat steps 1-5 for the remaining running board.

Installation is now complete.