



ATTACK STUBBY HD FRONT BUMPER

(2021-2023+ BRONCO)

INSTALLATION INSTRUCTIONS

CONTENTS

- (1) Front Bumper
- (1) Over-Rider Bar
- (2) Over-Rider Bar Foam Pads
- (2) Over-Rider Bar Block Off Plates
- (1) Winch Plate
- (1) Adaptive Cruise Control Block Off Plate
- (2) 3/4" D-Rings
- (4) M12x1.75 x 50mm Stud/Nut Plates
- (2) M12x1.75 x 50mm Bolts
- (6) M12 Lock Washers
- (6) M12 Flat Washers
- (4) M12 Nuts
- (4) M12 Plastic Stud Holders
- (6) M10x1.50 x 35mm Allen Bolts
- (6) M10 Lock Washers
- (12) M10 Flat Washers
- (6) M10 Nuts
- (3) M6x1.00 x 30mm Allen Bolts
- (8) M6x1.00 x 20mm Hex Bolts
- (14) M6 Flat Washers
- (11) M6 Flange Nuts
- (4) Proximity Sensor Mounting Kits
- (1) 6mm Allen Key
- (1) 4mm Allen Key

TOOLS REQUIRED

- 8mm, 10mm, 15mm, 17mm,
19mm Sockets
- Ratchet
- Panel Removal Tool

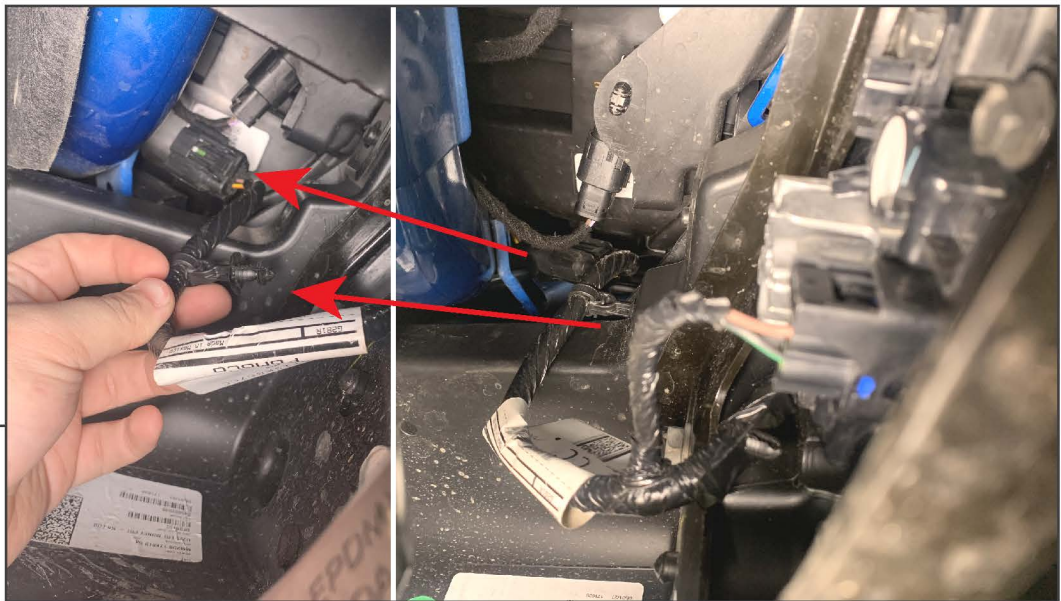
SKU # FB30797
Edited: 07/26/2023

STEP 1



Remove (6) 15mm bolts from the lower splash shield.

STEP 2



From under the bumper, reach upwards and unplug the fog light harness main connector located under the LH (Driver Side) headlight. Pull the plastic harness retainer from the vehicle.



STEP 3

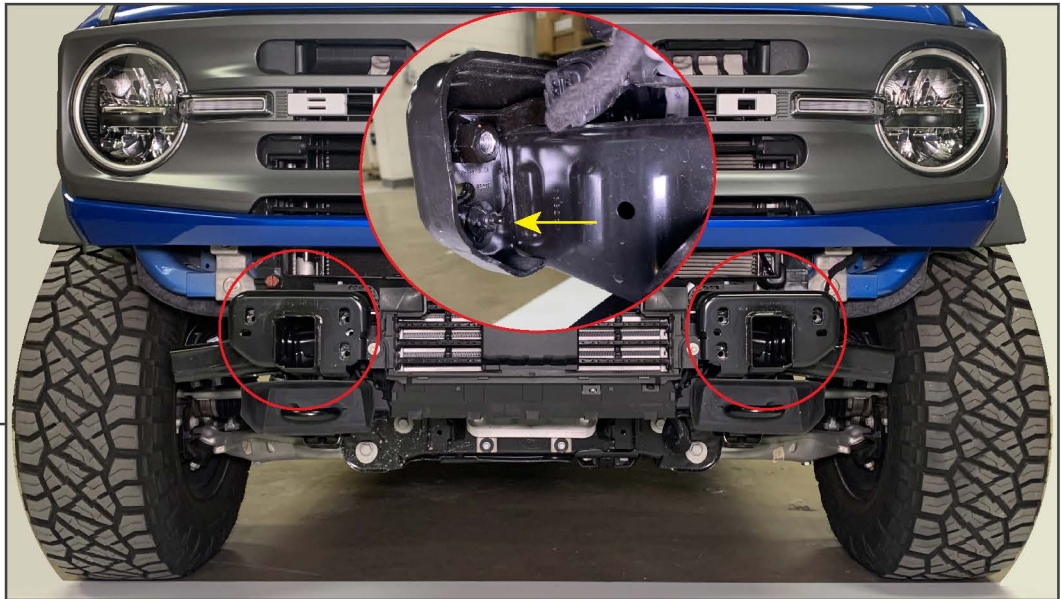
Plastic Front Bumper: Remove the (2) plastic bumper covers using a plastic panel removal tool to reveal the bumper mounting hardware.

Modular Front Bumper: Remove the (4) plastic push clips from each plastic cap, and then pull the plastic caps away from the bumper.



STEP 4

Remove (6) 15mm bolts from the front bumper, and remove the bumper assembly from the vehicle.



STEP 5

Unthread the (1) plastic wing nut from each of the bumper mounting nut plates, and remove each nut plate from the vehicle.



STEP 6

Unplug each fog light from the main harness, and remove each fog light from the bumper by removing (4) 10mm bolts.



STEP 7

Remove (4) 10mm bolts and (4) 15mm bolts to remove the rear bumper brace to release the fog light harness from the bumper assembly. Remove the proximity sensors, if equipped.

See step 17-22 for proximity sensor removal/installation.

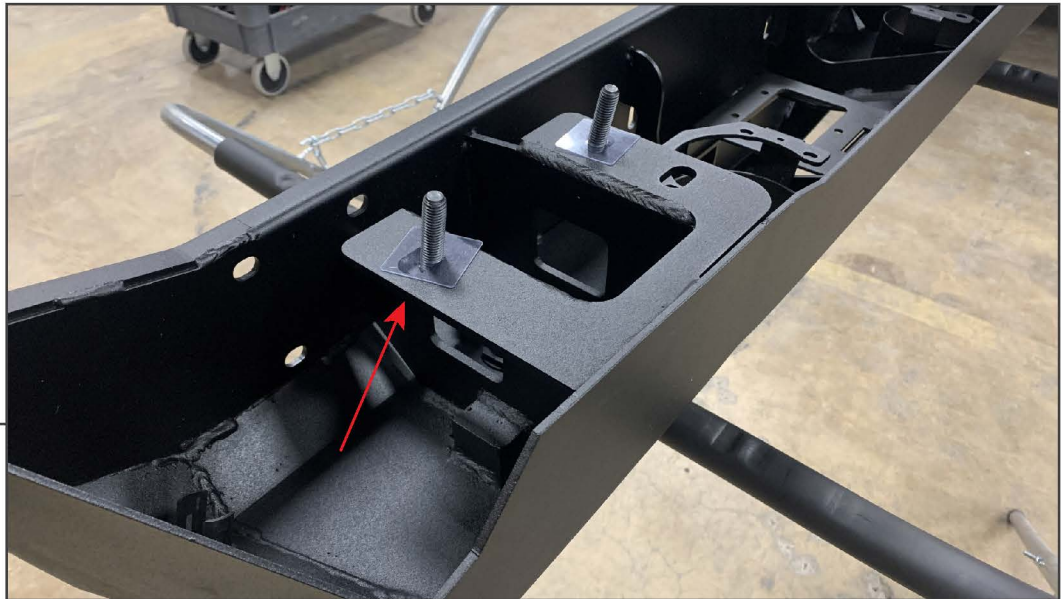


STEP 8

Place the bumper on a soft workable surface. Then, adhere the included foam pads to the bottom of the over-rider bar. Install the Over-Rider bar to the bumper using (3) M10x1.50 x 35mm Allen bolts, (3) M10 lock washers, (6) M10 flat washers, and (3) M10 nuts per side.

If preferred, install the block off plates in place of the over-rider bar using the hardware mentioned above.

Tighten all hardware evenly until secure.



STEP 9

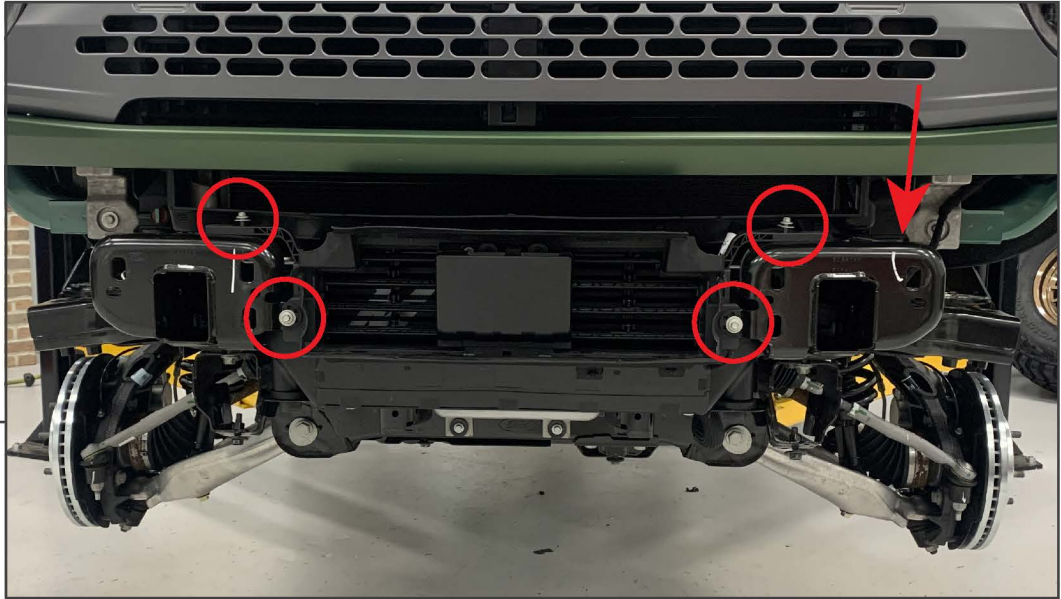
Fit the included (4) stud/nut plates to the inside of the bumper, allowing the stud to fit through the bumper mounting pad. Hold the studs in place using (4) plastic stud holders.



STEP 10

Secure the fog lights to each side of the bumper using (4) M6x1.00 x 25mm Allen bolts, (4) M4 flat washers, (4) M6 flange nuts.

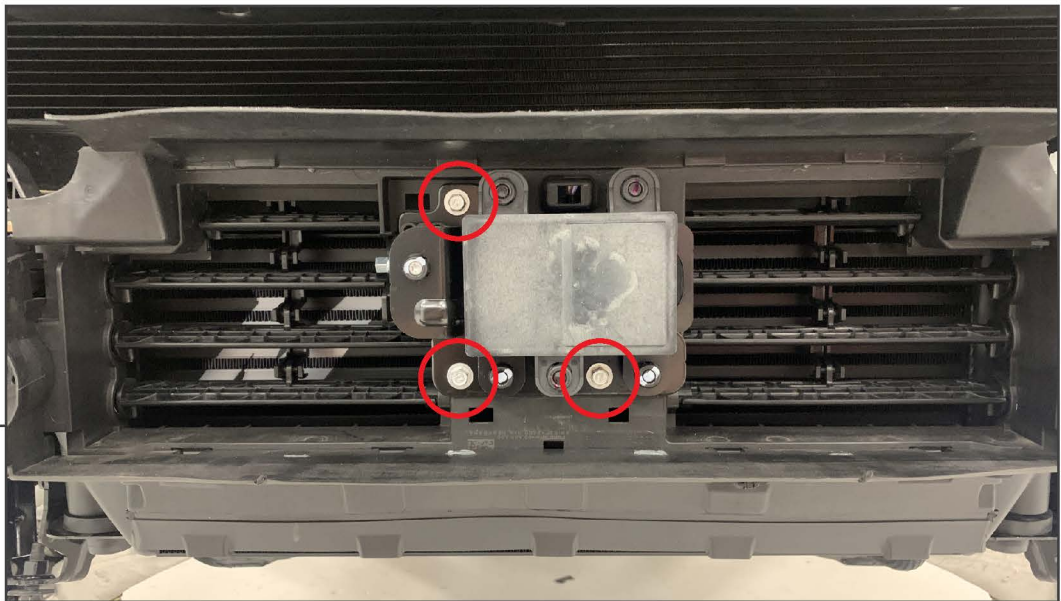
STEP 11 [ADAPTIVE CRUISE]



If the vehicle is not equipped with Adaptive Cruise Control, install the block off plate using (3) M6x1.00 x 30mm bolts, (3) M6 lock washers, (6) M6 flat washers, and (3) M6 nuts, then skip to step 17. ***Note: The block off plate is directional.**

With the bumper removed, locate the front lower shutter assembly. Unplug the wiring harness connector along the LH side of the vehicle, and remove (4) 8mm bolts from the shutter assembly. Remove the shutter assembly from the vehicle and place on a workable surface.

STEP 12 [ADAPTIVE CRUISE]



Remove (3) 8mm bolts from the Adaptive Cruise Control [ACC] module.



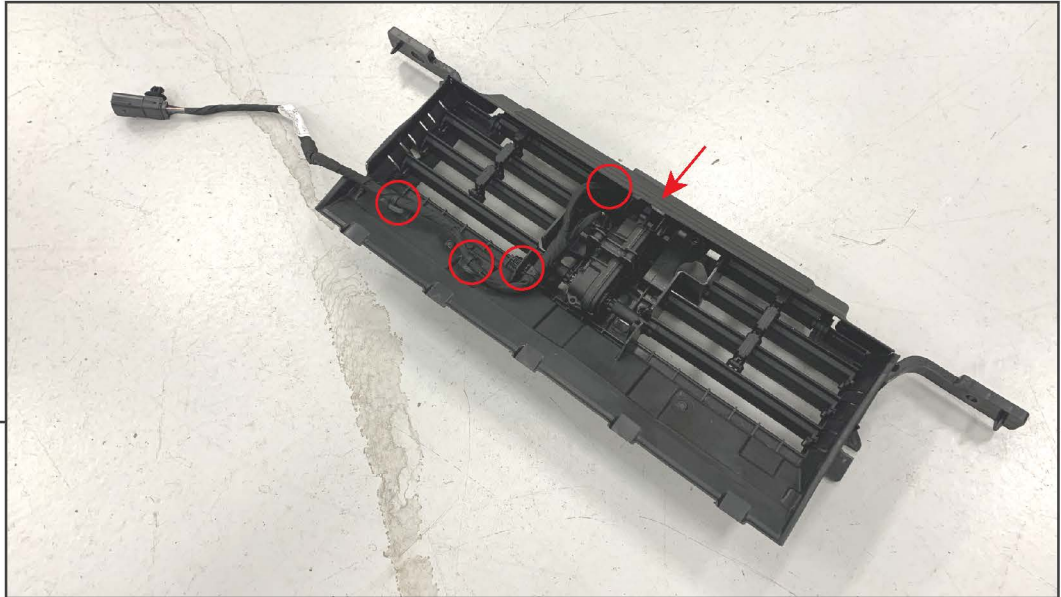
STEP 13
[ADAPTIVE
CRUISE]

Unplug the ACC module from the shutter assembly wiring harness.



STEP 14
[ADAPTIVE
CRUISE]

Using a pry tool, gently pry the ACC module away from the retaining bracket. The brackets are secured to the module using friction-fit ball studs.



STEP 15 [ADAPTIVE CRUISE]

Unplug the shutter assembly motor by sliding the red lock, and pressing the tab. Then, use a pry tool to dislodge the wiring harness from the shutter assembly. With the harness removed, mount the shutter assembly to the vehicle using the original (4) 8mm bolts.



STEP 16 [ADAPTIVE CRUISE]

Mount the ACC module to the bumper using (3) M6 x 25mm bolts, (3) M6 flat washers, and (3) M6 flange nuts, tighten until secure. The module can be installed in front or behind the bumper surface.

With the bumper mounted to the vehicle, route the wiring harness to the ACC module, shutter assembly motor, and the vehicle chassis connector. Clip the lower (3) clips into the vehicle shutter assembly to retain the harness. **Ensure the harness is routed away from any moving parts of the shutter assembly and is not stressed when mounted.



STEP 17 SENSOR REMOVAL

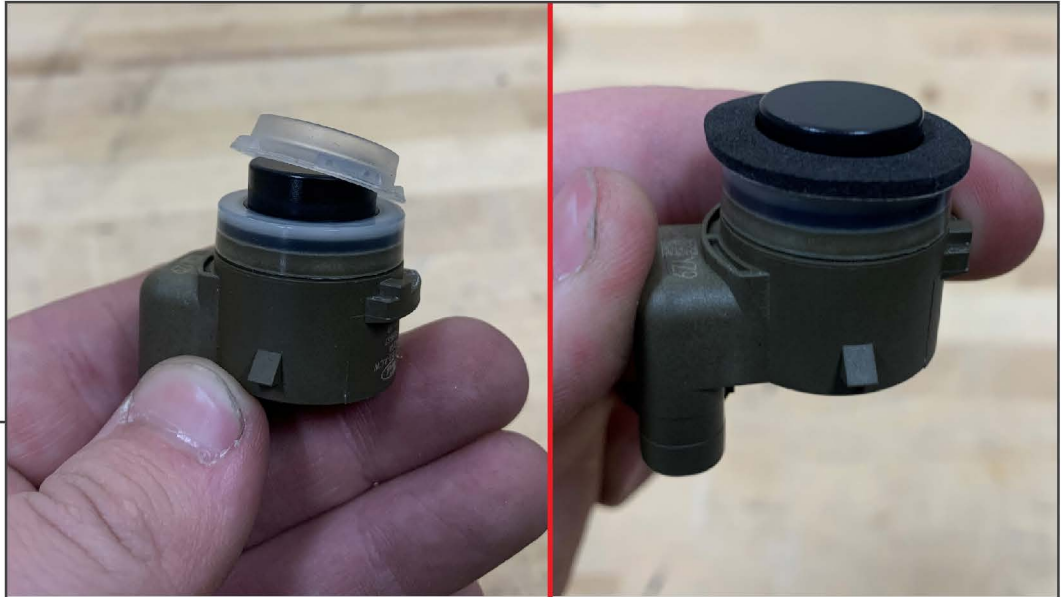
Optional: If equipped with bumper sensors, unplug the sensors by pressing the connector tab inwards while pulling up. Disconnect the wiring harness retaining clips from the bumper using a plastic panel removal tool and remove the harness.



STEP 18 SENSOR REMOVAL

Remove the sensors from the bumper by using a small flat head screwdriver or pick to gently pry back the mounting tabs.

STEP 19 SENSOR REMOVAL



Remove the rubber gasket from around the sensor. Install the provided foam ring gasket around the sensor.

STEP 20 INSTALLATION (OPTION 1)



Place the sensor into the designated port, ensuring the mounting tabs are within the slots. Adhere (1) rubber grommet to the sensor using the attached adhesive. Place (1) foam pad onto the rubber grommet. Place the (1) plastic cap onto the assembly, ensuring the (2) tabs lock into place to secure the sensor tightly to the port.

STEP 21 INSTALLATION (OPTION 2)



Place the sensor into the designated port, ensuring the mounting tabs are within the slots. Using (2) Phillips screws, gently tighten the screws until moderate pressure is on the sides of the sensor to hold the sensor into place.

Note: Do NOT over-tighten the screws as the sensor can become damaged.

STEP 22 OPTION 3 (NO SENSORS)



No Sensor: Press the plastic cap into the backup sensor housing through the face of the bumper.



STEP 23

With assistance, lift the bumper to the vehicle frame rails, fitting the studs through the vehicle frame bumper bolt holes. Secure the bumper into place using (2) M12x1.75 x 50mm bolts, (4) M12 nuts, (6) M12 lock washers, and (6) M12 flat washers per side. Adjust the bumper into place, and tighten the mounting hardware evenly until secure.



STEP 24

Winch Mounting: Place the included winch plate onto the bumper, aligning the (4) winch plate holes with the pre-drilled bumper holes. Using the hardware included with the winch, fit the winch mounting hardware from the bottom of the bumper, through the bumper and winch plate into the winch assembly. Tighten evenly until secure.

Note: Winch sold separately.



STEP 25

Install the (2) 3/4" D-Rings to the vehicle bumper.

Installation is now complete.