



---

# EXTREME HD FRONT BUMPER

(2021-2023+ BRONCO)

---

## INSTALLATION INSTRUCTIONS

### CONTENTS

---

- (1) Front Bumper
- (1) Over-Rider Bar
- (2) 3/4" D-Rings
- (1) LH Bumper Mounting Nut Plate
- (1) RH Bumper Mounting Nut Plate
- (2) Fog Light Mounting Brackets
- (1) ACC Block Off Plate
- (6) M12x1.75 x 50mm Hex Bolts
- (6) M12 Lock Washers
- (6) M12 Flat Washers
- (10) M8x1.25 x 25mm Allen Bolts
- (2) M8 Lock Washers
- (10) M8 Flat Washers
- (8) M8 Flange Nuts
- (3) M6x1.00 x 30mm Allen Bolts
- (3) M6 Lock Washers
- (6) M6 Flat Washers
- (3) M6 Nuts
- (12) M4x0.7 x 15mm Allen Bolts
- (12) M4 Lock Washers
- (20) M4 Flat Washers
- (8) M4 Nuts
- (4) Proximity Sensor Mounting Kits
- (1) 2.5mm Allen Key
- (1) 4mm Allen Key
- (1) 5mm Allen Key

### TOOLS REQUIRED

---

- 10mm, 15mm, 18mm Sockets
- Ratchet
- Plastic Panel Removal Tool

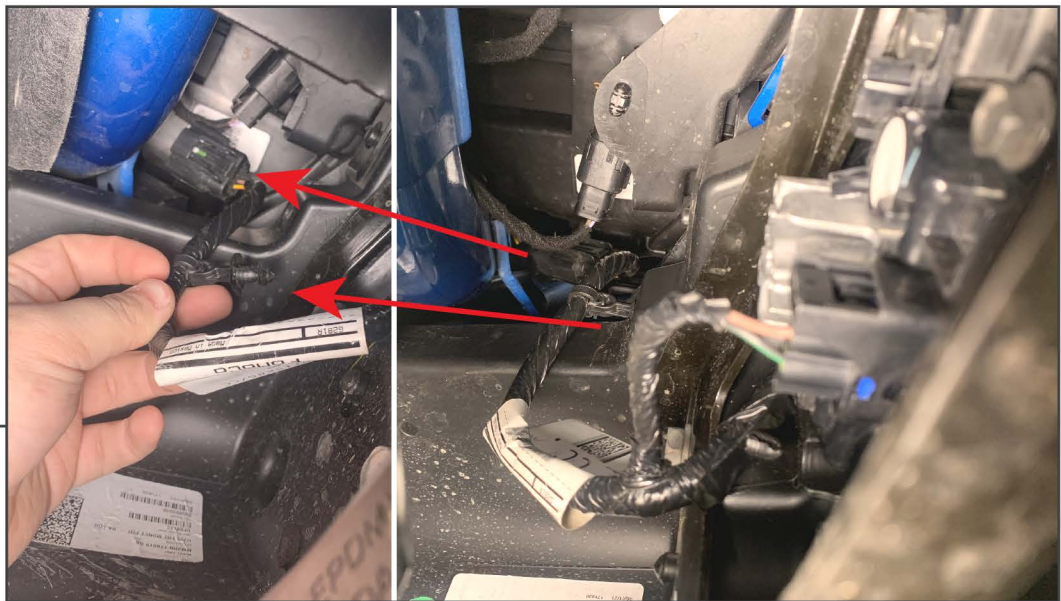
SKU # FB29807  
Edited: 04/10/2023

## STEP 1



Remove (6) 15mm bolts from the lower splash shield.

## STEP 2



From under the bumper, reach upwards and unplug the fog light harness main connector located under the LH (Driver Side) headlight. Pull the plastic harness retainer from the vehicle.



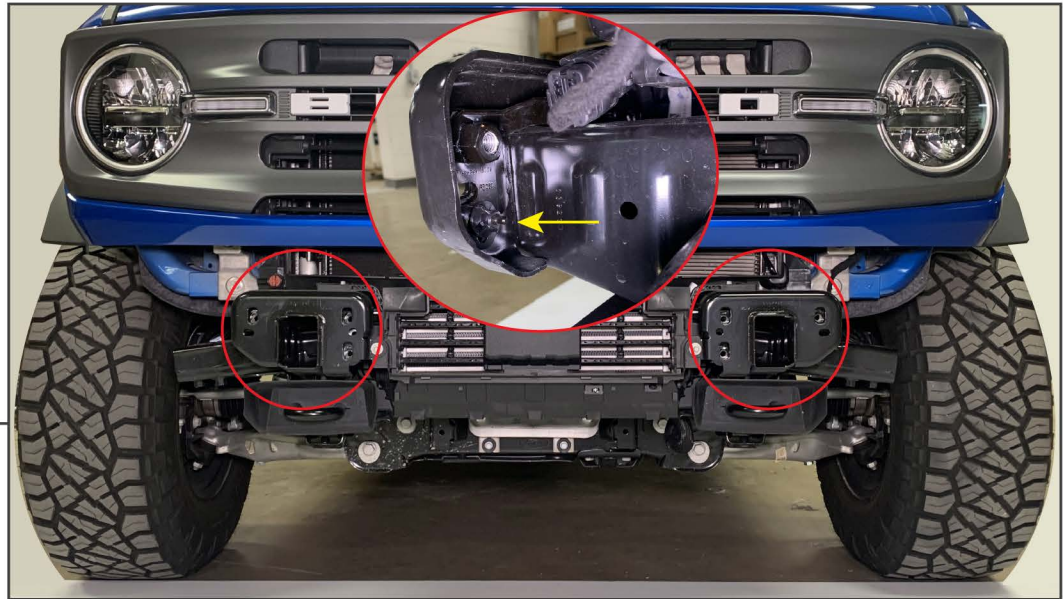
**STEP 3**

Remove the (2) plastic bumper covers using a plastic panel removal tool to reveal the bumper mounting hardware.



**STEP 4**

Remove (6) 15mm bolts from the front bumper, and remove the bumper assembly from the vehicle.



## STEP 5

Unthread the (1) plastic wing nut from each of the bumper mounting nut plates, and remove each nut plate from the vehicle.



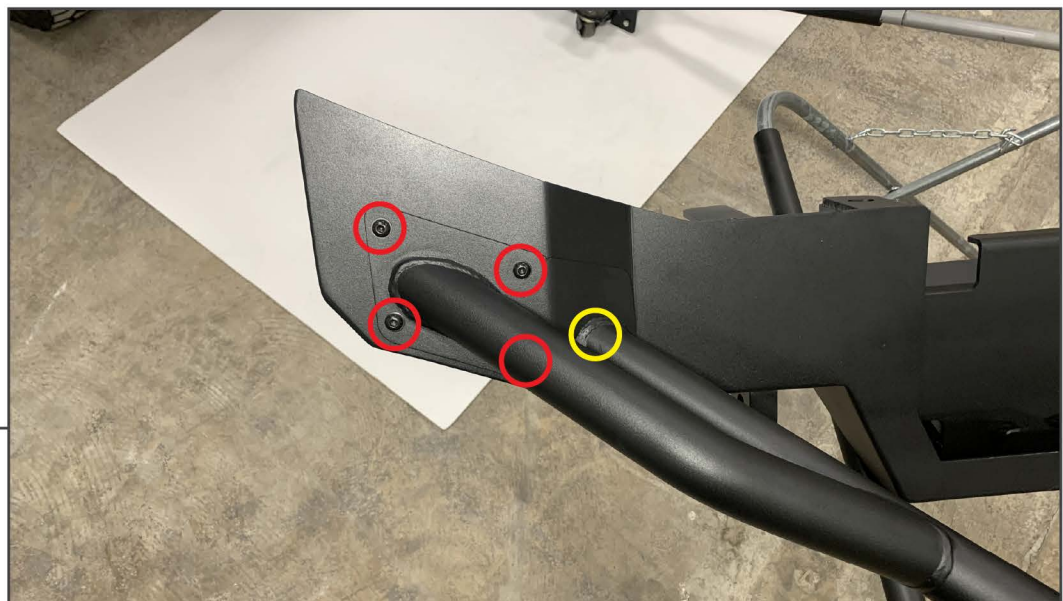
## STEP 6

Unplug each fog light from the main harness, and remove each fog light from the bumper by removing (4) 10mm bolts.

**STEP 7**

Remove (4) 10mm bolts and (4) 15mm bolts to remove the rear bumper brace to release the fog light harness from the bumper assembly. Remove the proximity sensors, if equipped.

See step 17-22 for proximity sensor removal/installation.

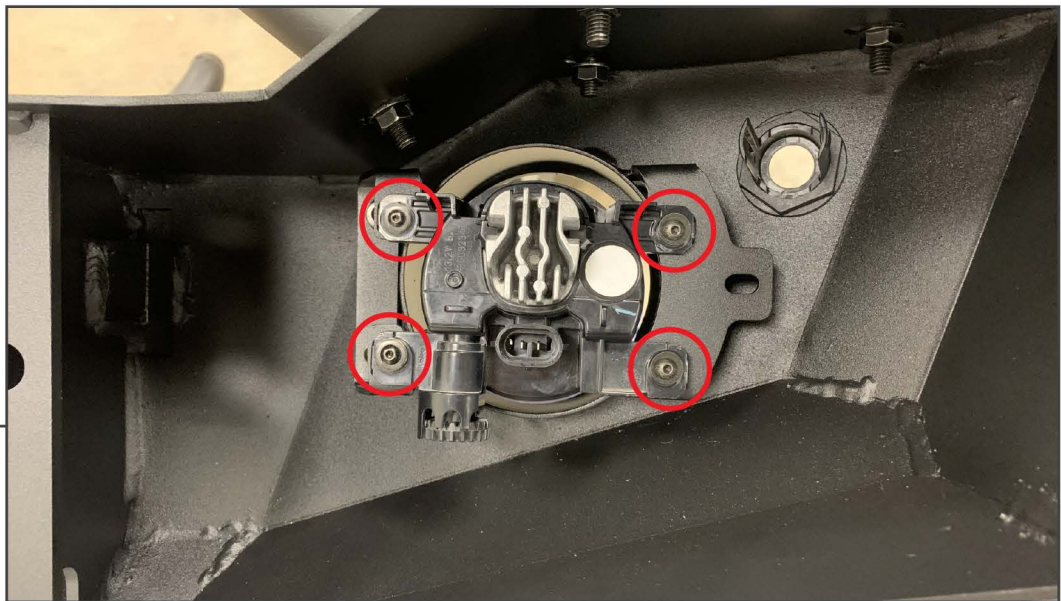
**STEP 8**

Place the bumper on a soft workable surface. Install the Over-Rider bar to the bumper using (4) M8x1.25 x 25mm Allen bolts, (4) M8 lock washers, (4) M8 flat washers, and (4) M8 flange nuts per side. Then, secure the inner-most bolt to the bumper from under the bumper surface using (1) M8x1.25 x 25mm Allen bolt, (1) M8 lock washer, and (1) M8 flat washer.

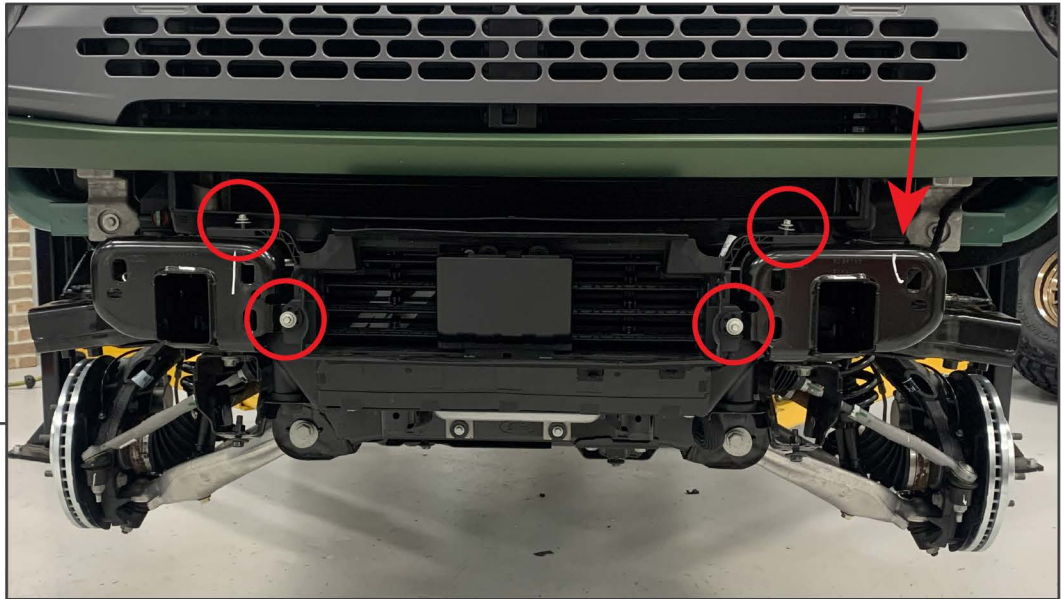
Tighten all hardware evenly until secure.

**STEP 9**

Install (1) fog light mounting bracket to the bumper fog light mounting pad using (2) M4x0.7 x 15mm Allen bolts, (2) M4 lock washers, and (2) M4 flat washers.

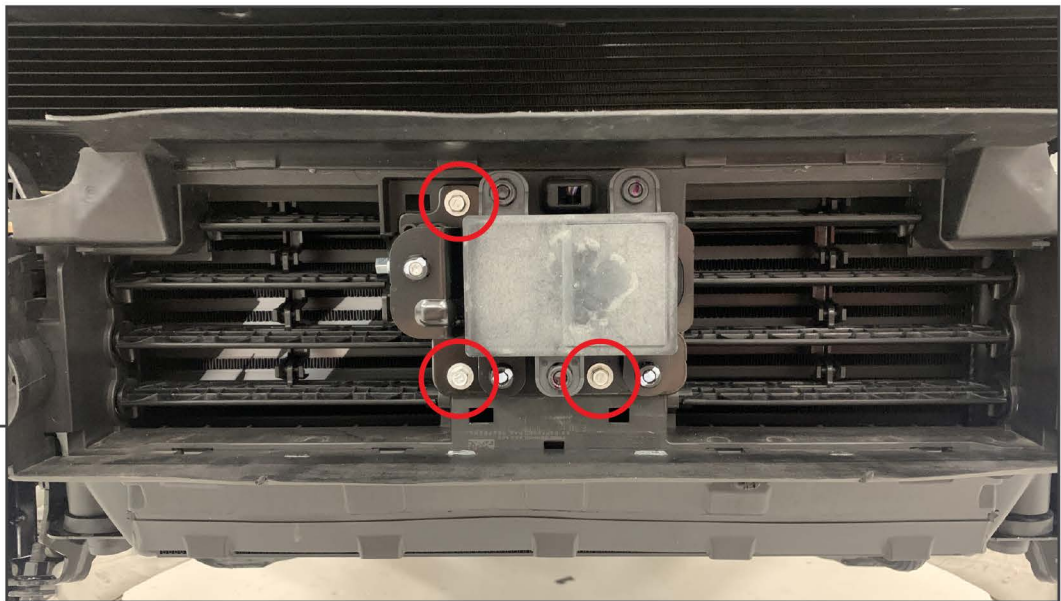
**STEP 10**

Secure the fog lights to each side of the bumper using (4) M4x0.7 x 15mm Allen bolts, (4) M4 lock washers, (8) M4 flat washers, (4) M4 nuts.

**STEP 11**  
**[ADAPTIVE**  
**CRUISE]**

If the vehicle is not equipped with Adaptive Cruise Control, install the block off plate using (3) M6x1.00 x 30mm bolts, (3) M6 lock washers, (6) M6 flat washers, and (3) M6 nuts, then skip to step 17. **\*Note: The block off plate is directional.**

With the bumper removed, locate the front lower shutter assembly. Unplug the wiring harness connector along the LH side of the vehicle, and remove (4) 8mm bolts from the shutter assembly. Remove the shutter assembly from the vehicle and place on a workable surface.

**STEP 12**  
**[ADAPTIVE**  
**CRUISE]**

Remove (3) 8mm bolts from the Adaptive Cruise Control [ACC] module.



**STEP 13**  
**[ADAPTIVE**  
**CRUISE]**

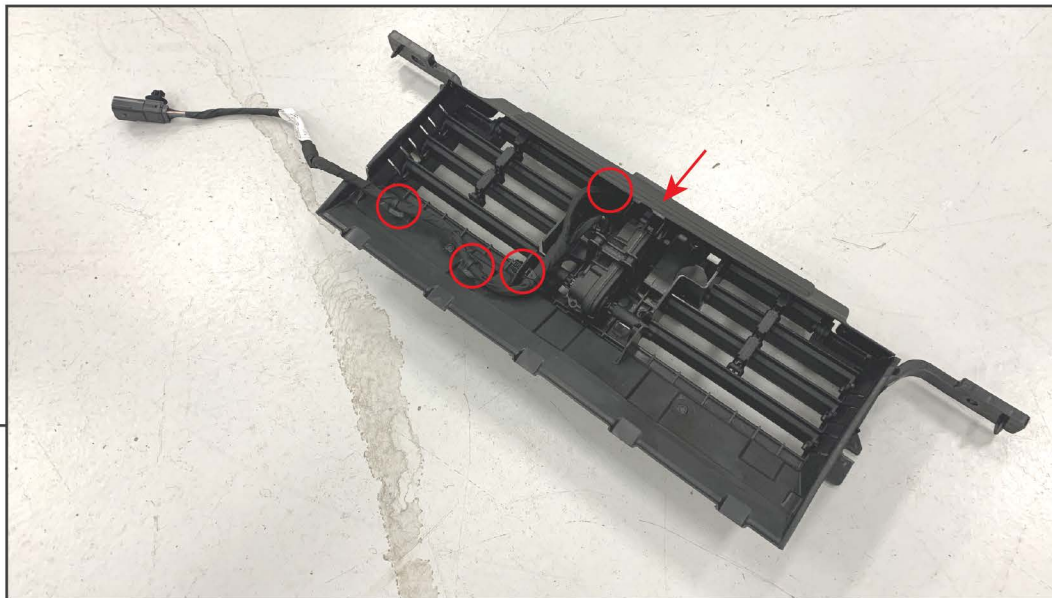
Unplug the ACC module from the shutter assembly wiring harness.



**STEP 14**  
**[ADAPTIVE**  
**CRUISE]**

Using a pry tool, gently pry the ACC module away from the retaining bracket. The brackets are secured to the module using friction-fit ball studs.



**STEP 15  
[ADAPTIVE  
CRUISE]**

Unplug the shutter assembly motor by sliding the red lock, and pressing the tab. Then, use a pry tool to dislodge the wiring harness from the shutter assembly. With the harness removed, mount the shutter assembly to the vehicle using the original (4) 8mm bolts.

**STEP 16  
[ADAPTIVE  
CRUISE]**

Mount the ACC module to the bumper using (3) M6 x 25mm bolts, (3) M6 flat washers, and (3) M6 nuts, tighten until secure. The module can be installed in front or behind the bumper surface.

With the bumper mounted to the vehicle, route the wiring harness to the ACC module, shutter assembly motor, and the vehicle chassis connector. Clip the lower (3) clips into the vehicle shutter assembly to retain the harness. \*\*Ensure the harness is routed away from any moving parts of the shutter assembly and is not stressed when mounted.

---

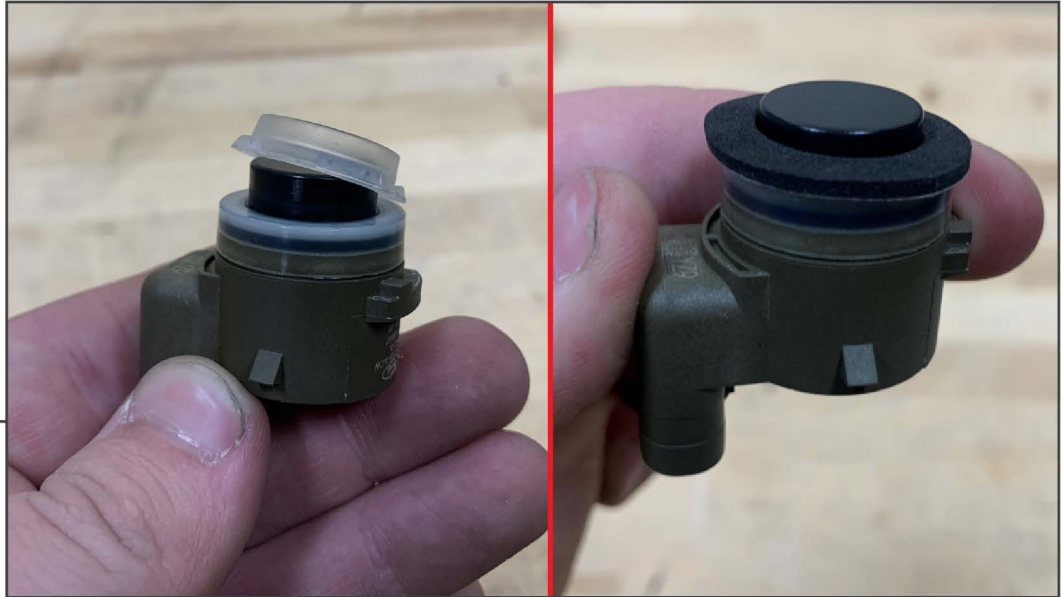
**STEP 17  
SENSOR  
REMOVAL**

Optional: If equipped with bumper sensors, unplug the sensors by pressing the connector tab inwards while pulling up. Disconnect the wiring harness retaining clips from the bumper using a plastic panel removal tool and remove the harness.

---

**STEP 18  
SENSOR  
REMOVAL**

Remove the sensors from the bumper by using a small flat head screwdriver or pick to gently pry back the mounting tabs.

**STEP 19  
SENSOR  
REMOVAL**

Remove the rubber gasket from around the sensor. Install the provided foam ring gasket around the sensor.

**STEP 20  
INSTALLATION  
(OPTION 1)**

Place the sensor into the designated port, ensuring the mounting tabs are within the slots. Adhere (1) rubber grommet to the sensor using the attached adhesive. Place (1) foam pad onto the rubber grommet. Place the (1) plastic cap onto the assembly, ensuring the (2) tabs lock into place to secure the sensor tightly to the port.

**STEP 21  
INSTALLATION  
(OPTION 2)**

Place the sensor into the designated port, ensuring the mounting tabs are within the slots. Using (2) Phillips screws, gently tighten the screws until moderate pressure is on the sides of the sensor to hold the sensor into place.

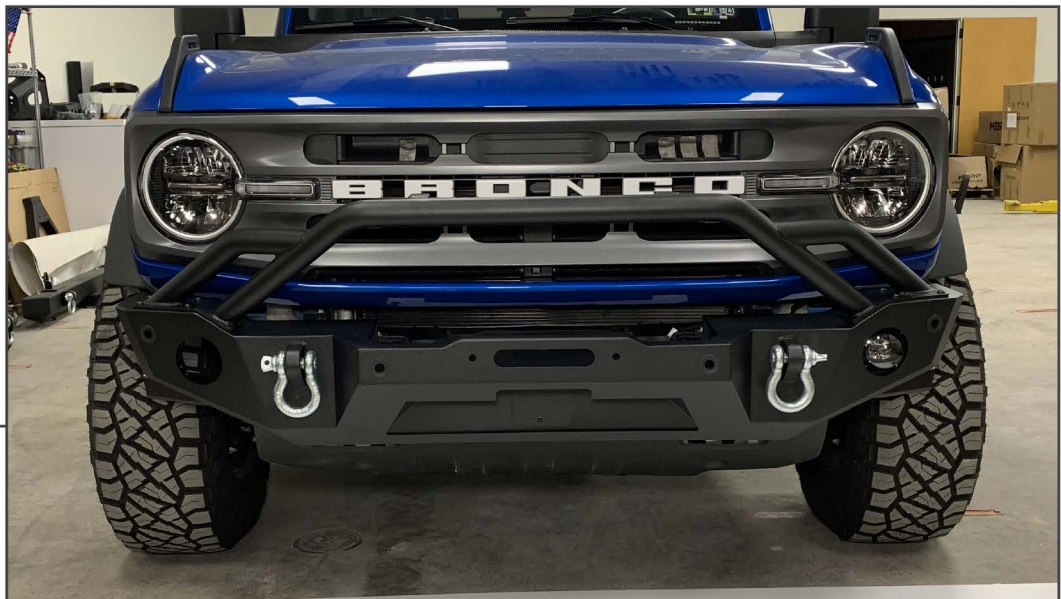
**Note:** Do NOT over-tighten the screws as the sensor can become damaged.

**STEP 22  
OPTION 3  
(NO SENSORS)**

**No Sensor:** Press the plastic cap into the backup sensor housing through the face of the bumper.

**STEP 23**

Place the (2) M12 bumper mounting nut plates behind the vehicle frame rails. With assistance, lift the bumper to the vehicle frame rails. Secure the bumper into place using (3) M12x1.75 x 50mm bolts, (3) M12 lock washers, and (3) M12 flat washers per side. Adjust the bumper into place, and tighten the mounting hardware evenly until secure.

**STEP 24**

Install the (2) 3/4" D-Rings to the vehicle bumper.

Installation is now complete.