



TRAIL FORCE HD FULL WIDTH FRONT BUMPER

(2021-2023+ BRONCO)

INSTALLATION INSTRUCTIONS

CONTENTS

- (1) Bumper
- (1) LH Corner Cap
- (1) RH Corner Cap
- (1) ACC Block Off Plate
- (2) 3/4" D-Rings
- (1) Over Rider Bar
- (2) M12 Nut Plates (LH and RH)
- (6) M12x1.75 x 50mm Hex Bolts
- (6) M12 Lock Washers
- (6) M12 Flat Washers
- (6) M8x1.25 x 25mm Allen Bolts
- (6) M8 Flat Washers
- (6) M8 Flange Nuts
- (3) M6x1.00 x 30mm Allen Bolts
- (8) M6x1.00 x 20mm Hex Bolts
- (4) M6x1.00 x 20mm Combo Bolts
- (11) M6 Flat Washers
- (15) M6 Flange Nuts
- (1) 4mm Allen Key
- (4) Proximity Sensor Mounting Kits

TOOLS REQUIRED

- 10mm, 13mm, 15mm, 19mm
Sockets
- Ratchet
- Flathead Screwdriver
- Plastic Panel Removal Tool
- 4mm, 5mm Allen Keys/Sockets

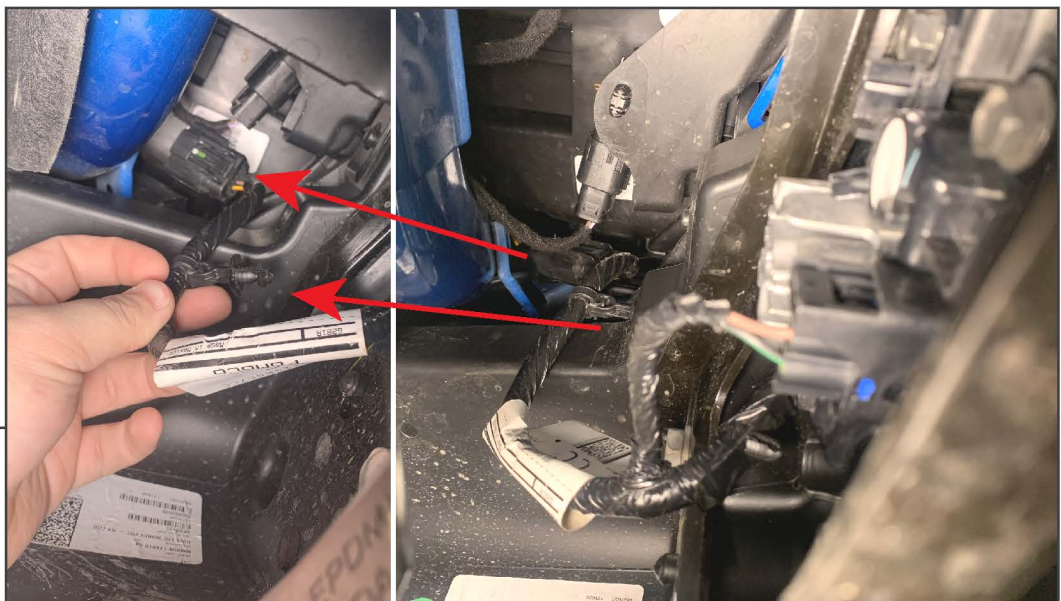
SKU # FB29354
Edited: 06/05/2023

STEP 1



Remove (6) 15mm bolts from the lower splash shield.

STEP 2



From under the bumper, reach upwards and unplug the fog light harness main connector located under the LH (Driver Side) headlight. Pull the plastic harness retainer from the vehicle.



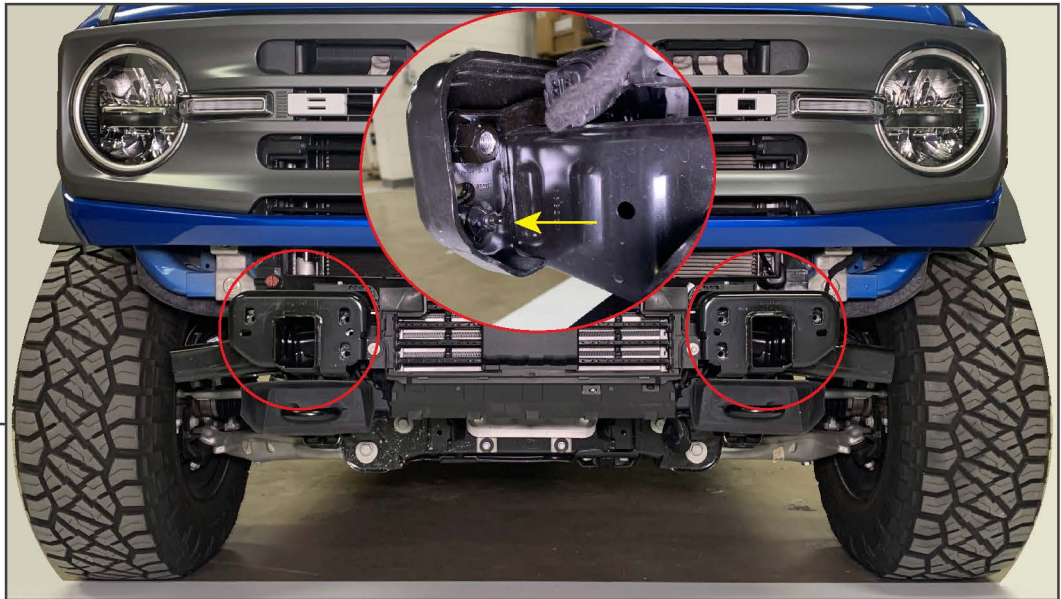
STEP 3

Remove the (2) plastic bumper covers using a plastic panel removal tool to reveal the bumper mounting hardware.



STEP 4

Remove (6) 15mm bolts from the front bumper, and remove the bumper assembly from the vehicle.

**STEP 5**

Unthread the (1) plastic wing nut from each of the bumper mounting nut plates, and remove each nut plate from the vehicle.

**STEP 6**

Unplug each fog light from the main harness, and remove each fog light from the bumper by removing (4) 10mm bolts.

**STEP 7**

Remove (4) 10mm bolts and (4) 15mm bolts to remove the rear bumper brace to release the fog light harness from the bumper assembly.

Note: If vehicle is equipped with proximity sensors, see step 17-22 to transfer the sensors to the new bumper.

**STEP 8**

Place the new bumper on a workable surface for assembly. Secure the Over Rider bar to the bumper using (6) M8x1.25 x 25mm bolts, (6) M8 flat washers, and (6) M8 flange nuts. Tighten all hardware evenly until secure.

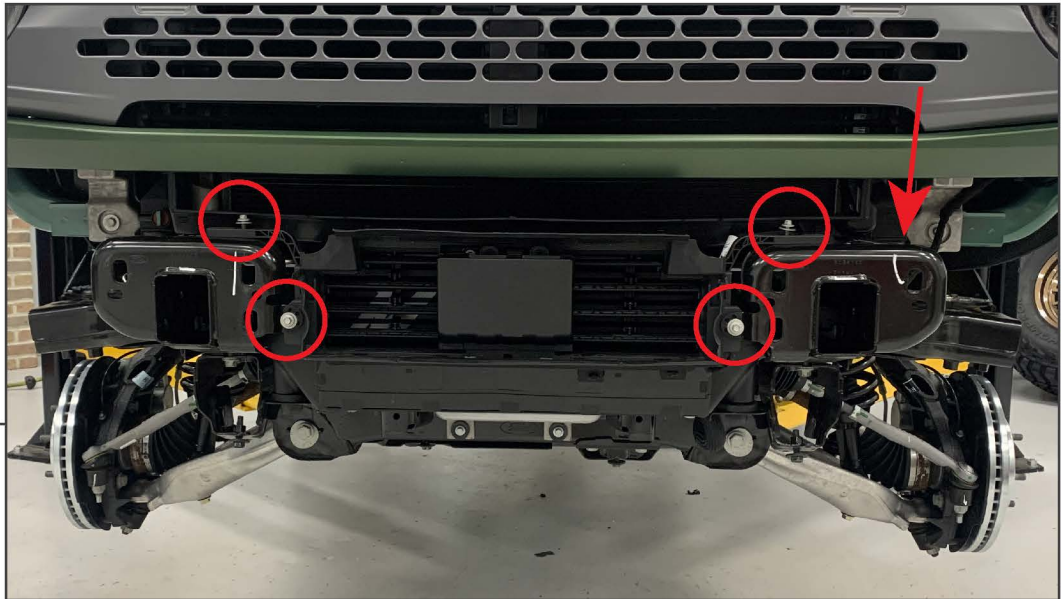
**STEP 9**

Secure the OEM fog lights to the vehicle bumper using (4) M6x1.00 x 20mm Hex bolts, (4) M6 flat washers, and (4) M6 flange nuts. Tighten all hardware evenly until secure.

**STEP 10**

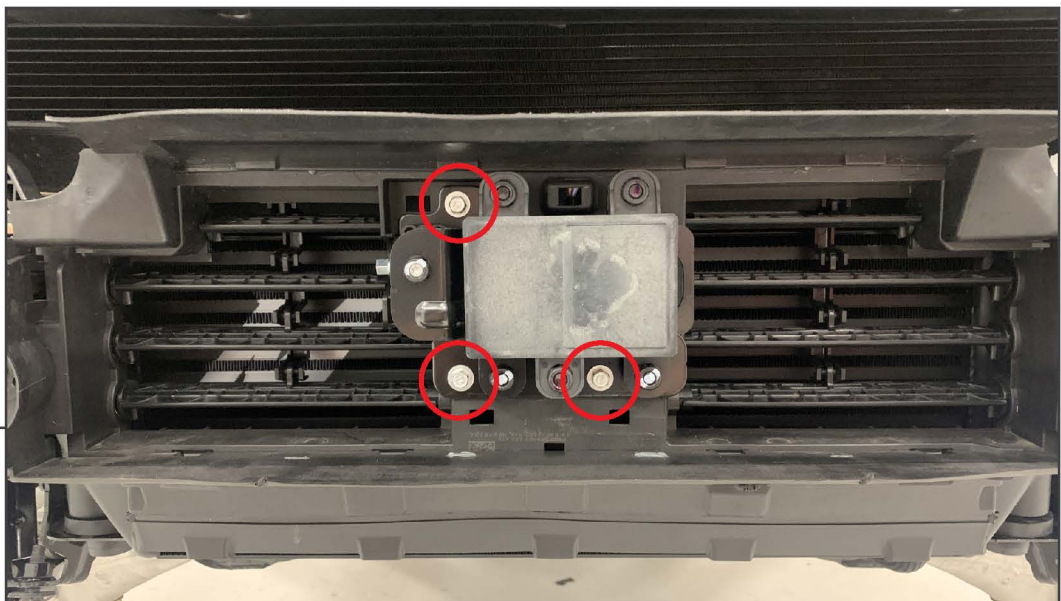
Vehicle without Adaptive Cruise Control [ACC]: Install the ACC block off plate into the bumper using (3) M6 x 30mm Allen bolts, (6) M6 flat washers, and (3) M6 flange nuts. Tighten until secure. **Note:** The block off plate is directional.

Vehicle with Adaptive Cruise Control [ACC]: View steps 11-16 to transfer the ACC module to the new bumper.



STEP 11
(ACC RELOCATION)

With the bumper removed, locate the front lower shutter assembly. Unplug the wiring harness connector along the LH side of the vehicle, and remove (4) 8mm bolts from the shutter assembly. Remove the shutter assembly from the vehicle and place on a workable surface.



STEP 12
(ACC RELOCATION)

Remove (3) 8mm bolts from the Adaptive Cruise Control [ACC] module.



STEP 13
(ACC RELOCATION)

Unplug the ACC module from the shutter assembly wiring harness.



STEP 14
(ACC RELOCATION)

Using a pry tool, gently pry the ACC module away from the retaining bracket. The brackets are secured to the module using friction-fit ball studs.



**STEP 17
(PROXIMITY
SENSORS)**

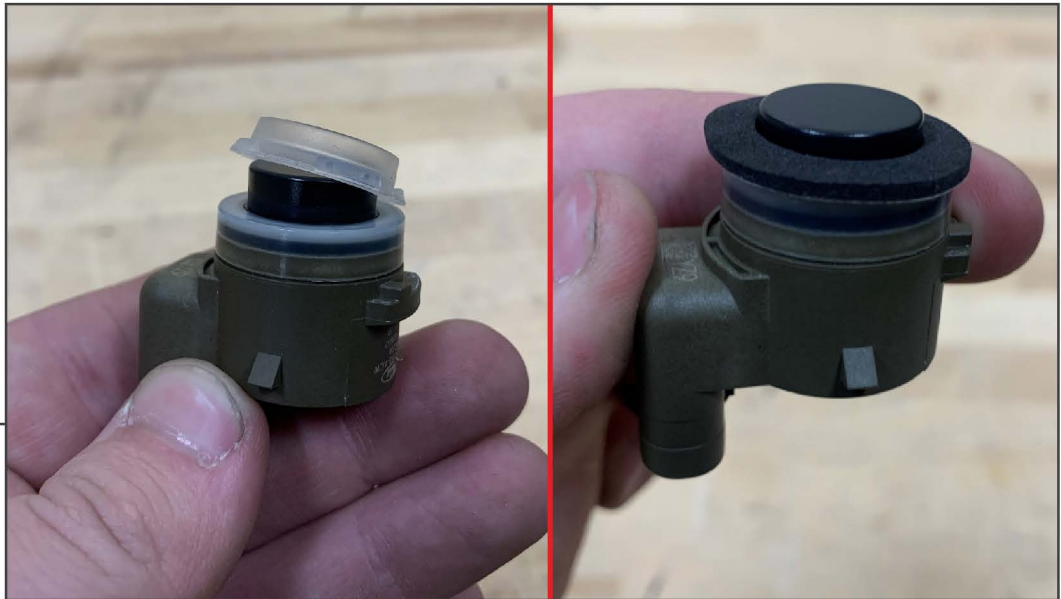
Vehicle without OEM Proximity Sensors: See step 22.

Vehicles with OEM Proximity Sensors: Unplug the sensors by pressing the connector tab inwards while pulling up. Disconnect the wiring harness retaining clips from the bumper using a plastic panel removal tool and remove the harness.



**STEP 18
(PROXIMITY
SENSORS)**

Remove the sensors from the bumper by using a small flat head screwdriver or pick to gently pry back the mounting tabs.



**STEP 19
(PROXIMITY
SENSORS)**

Remove the rubber gasket from around the sensor. Install the provided foam ring gasket around the sensor.



**STEP 20
(PROXIMITY
SENSORS
INSTALL 1)**

Place the sensor into the designated port, ensuring the mounting tabs are within the slots. Adhere (1) rubber grommet to the sensor using the attached adhesive. Place (1) foam pad onto the rubber grommet. Place the (1) plastic cap onto the assembly, ensuring the (2) tabs lock into place to secure the sensor tightly to the port.



**STEP 21
(PROXIMITY
SENSORS
INSTALL 2)**

Place the sensor into the designated port, ensuring the mounting tabs are within the slots. Using (2) Phillips screws, gently tighten the screws until moderate pressure is on the sides of the sensor to hold the sensor into place.

Note: Do NOT over-tighten the screws as the sensor can become damaged.



**STEP 22
(NO PROXIMITY
SENSORS)**

If vehicle is not equipped with sensors, press the plastic plug into the sensor port until the plug is flush with the port.

**STEP 23**

Fit the (2) M12 nut plates behind the vehicle frame rail. Then, lift the bumper to the vehicle frame rails. Loosely secure the bumper into place using (6) M12x1.75 x 50mm bolts, (6) M12 lock washers, and (6) M12 flat washers.

**STEP 24**

Secure the end caps to each side of the bumper using (2) M6x1.00 x 20mm combo Allen bolts, (2) M6 flat washers, and (2) M6 flange nuts. Ensure the end cap is level with the bumper, and tighten the hardware evenly until secure.

Adjust the bumper to best fit the vehicle, and tighten the bumper mounting hardware at the frame rails.



STEP 25

Install (2) 3/4" D-Rings to the vehicle mounting points. Neatly route the bumper wiring harness along the bumper/vehicle.

Installation is now complete.