



# 21-UP BRONCO TRAIL SERIES FRONT BUMPER

DOCUMENT: INST\_45203\_REVA • UPDATED: AUG 2022

Thank you for purchasing this ICON Vehicle Dynamics product. Please read through this entire document before proceeding with installation. If you are not confident in your mechanical skills, please seek the help of a professional to perform the installation. Check your packages immediately upon arrival to ensure that everything listed is included, and to check for damage during shipping. If anything is missing or damaged, or if you need technical assistance with any aspect of this installation, call (951) 689-ICON as soon as possible.



## APPLICATION

These installation instructions apply to the following products:

**45203** 21-UP BRONCO TRAIL SERIES FRONT BUMPER

## COMPONENTS INCLUDED

- (1) Bronco Trail Series Front Bumper
- (1) Bronco Trail Series Front Bumper Center Mesh
- (1) Bronco Trail Series Front Bumper Lower Mesh

## HARDWARE INCLUDED

- (1) Bumper Sensor Mount Kit (4 Mounts)
- (16) M6-1.00 X 20MM SS Button Head Cap Screw
- (4) Cable Tie Holder - Adhesive Backed
- (4) 5-1/2 X 0.14 Nylon Cable Tie - Black

## TOOLS REQUIRED

- Small flat blade screwdriver
- Body panel clip removal tool
- Side cutter & flush cutter
- 13mm & 15mm sockets and ratchet
- 4mm & 7/32" hex key and T-40 Torx driver bits

## IMPORTANT NOTICES - PLEASE READ FIRST

- ✓ **READ ALL INSTRUCTIONS THOROUGHLY FROM START TO FINISH BEFORE BEGINNING INSTALLATION! IF THESE INSTRUCTIONS ARE NOT PROPERLY FOLLOWED SEVERE FRAME, SUSPENSION OR TIRE DAMAGE MAY RESULT TO THE VEHICLE!**
- ✓ **ICON VEHICLE DYNAMICS RECOMMENDS ALL INSTALLATION TO BE PERFORMED BY A PROFESSIONAL SHOP/SERVICE TECHNICIAN. PRODUCT FAILURE CAUSED BY IMPROPER INSTALLATION WILL NOT BE COVERED UNDER ICON'S WARRANTY POLICY.**

## TECH NOTES

**NOTE:** These installation instructions are based on a clean installation on to a stock vehicle. Previously modified vehicles may require additional steps.

**NOTE:** Installation on Broncos equipped with Adaptive Cruise Control requires relocation of the ACC module with either one of the following products (sold separately):

**45209** 21-UP FORD BRONCO PRO SERIES ACC RELOCATION KIT

**45210** 21-UP FORD BRONCO TRAIL SERIES ACC RELOCATION KIT

## INSTALLATION INSTRUCTIONS

1. Ensure the vehicle is placed on a flat, level surface with the transmission in PARK (or first gear for vehicles equipped with a manual transmission), the tires chocked, and the emergency brake ON. Wear safety glasses from this point forward.
2. Behind the bumper on the left side (driver side) look for a large electrical connector. Disconnect it by depressing the locking tang and pulling the two halves of the connector apart.



FIG. 1

3. Remove the plastic inserts from the front of the bumper on both ends, which may be blank or surround the fog lights or tow hooks depending on which factory bumper the Bronco is equipped with. For the Modular Steel bumper, use a small screwdriver or trim panel tool to pry up the plastic clips that hold the cover in place. For the plastic factory bumper, firmly grasp the cover from the



edges and pull to disengage it's mounting pins (no tool required).



FIG. 2

4. If the Bronco is equipped with parking sensors mounted in the plastic covers, disconnect them from the vehicle's wiring harness. Use a small screwdriver or pick to depress the locking tang and separate the harness plug from the sensor.



FIG. 3

5. With the plastic covers removed and set aside, use a 15mm socket and ratchet to remove the six (6) bolts (three per side) that hold the bumper to the frame. Set the factory bumper bolts aside as they will be reused. If the Bronco is equipped with the Modular steel bumper, set the recovery tabs aside. The bumper bolts were threaded into a floating nut plate located behind the bumper mounting flange on either side. Ensure that the nut plates remain in place as they will be re-used.

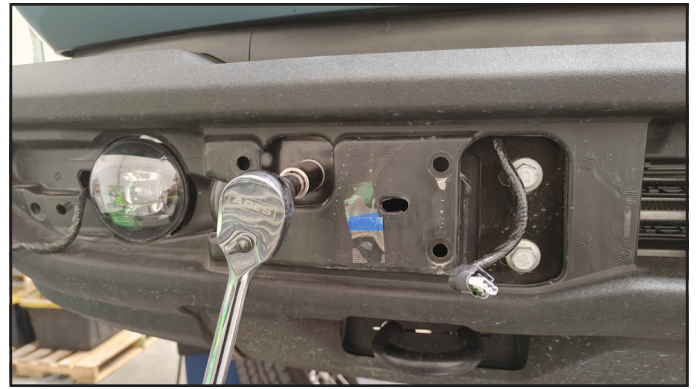


FIG. 4

6. With the bumper bolts removed, the bumper may now be removed from the vehicle. With the help of a friend, lift the bumper off of the vehicle and set it aside.
7. If the vehicle is equipped with the Modular steel bumper and parking sensors, the sensors will need to be removed from the bumper using the following procedure.

A. Begin by placing the bumper face-down on the floor or a workbench, with a piece of cardboard or moving blanket to protect the bumper's finish.

B. Use a 13mm socket and ratchet to remove the four (4) bolts (each side) that attach the steel two brackets to the back of the bumper.

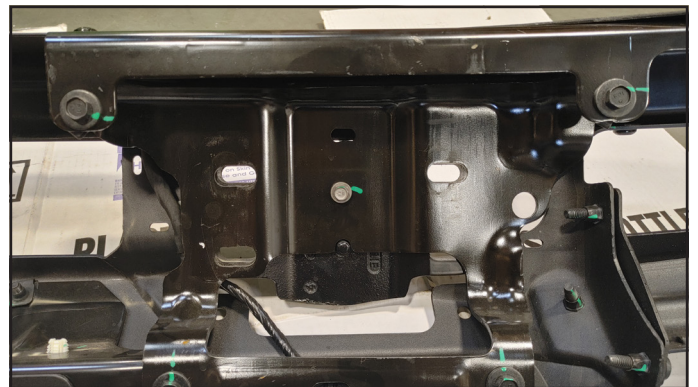


FIG. 5

C. Use a T40 Torx driver bit and ratchet to remove the sixteen (16) bolts (without washers) that fasten the internal brackets that conceal the wiring harness and parking sensors.





FIG. 6



FIG. 7

D. Use a T40 Torx driver bit and ratchet to remove the five (5) bolts from the center internal bracket.



FIG. 8

E. With brackets removed and wiring exposed, use a flat screwdriver or body panel clip removal tool to pry the wiring harness clips from the bumper and brackets.



FIG. 9

F. Remove the wiring harness from the bumper and set it aside to reinstall in the ICON bumper.

G. Remove the parking sensors from their bezels. Use a small flat blade screwdriver to pry back the retaining clips and pull the sensor out of the bezel.

The bezels can stay in the bumper as they will not be reused.

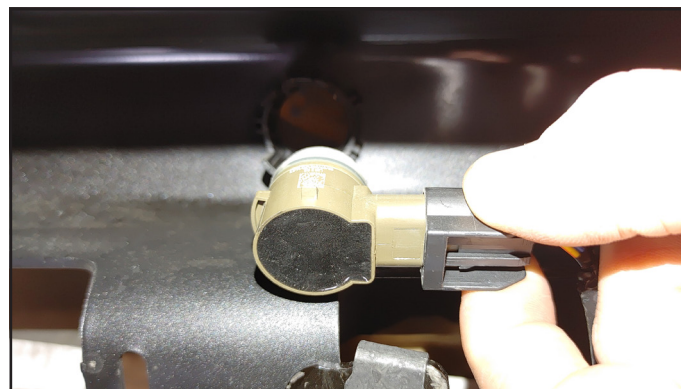


FIG. 10

8. If the vehicle is equipped with parking sensors, locate the four (4) Universal Sensor Bumper Mounts which were included in the hardware kit and install them into the four round holes cut into the surface of the ICON bumper, according to the instructions in the section titled "SUPPLEMENT: INSTALLING THE UNIVERSAL SENSOR MOUNT."
9. With the parking sensors installed (if equipped), lay the factory bumper wiring harness into the back side of the bumper and connect the parking sensor plugs into the parking sensors. Secure the wiring harness to the inside of the bumper with the supplied square adhesive-backed cable anchors and zip ties.
10. Return to the vehicle and remove the plastic air inlet shroud for the intercooler, which was revealed when the bumper was removed from the vehicle. Firmly grasp the shroud and pull away from the Bronco to release the retainer clips. Set the shroud aside as it will not be re-used.
11. If the vehicle is equipped with Adaptive Cruise Control, remove the ACC module from the vehicle and install it onto ICON's 21-UP FORD BRONCO TRAIL SERIES ACC RELOCATION KIT, part number 45210 (sold separately). Alternatively, ICON's 21-UP FORD BRONCO PRO SERIES ACC RELOCATION KIT, part number 45209 (sold separately) may be used to relocate the ACC to the grille area.

If the vehicle is not equipped with ACC, remove the empty ACC cover by pulling the top end away from the vehicle to release the retainer clip, then swing the cover down and pull the bottom tabs from their slots.

12. Install the aluminum Center Mesh panel into the bumper, positioned on the back/inside of the bumper shell, covering the rectangular center



cut-away in the bumper. If ICON's 21-UP FORD BRONCO ACC RELOCATION KIT FOR TRAIL SERIES FRONT BUMPER, part number 45210 (sold separately) is being used, install it in place of the standard Center Mesh that came with the Trail Series Front Bumper. Secure the mesh panel with using the ten (10) supplied M6-1.00 X 20MM SS Button Head Cap Screws

13. If desired, install LED auxiliary lights into the mounts located behind the rectangular cut-out in the center of the bumper. The mounting tabs will accommodate up to five (5) common size 3" cube lights or a single 20" 2-row LED light bar. If the ACC has been relocated using ICON's 21-UP FORD BRONCO ACC RELOCATION KIT FOR TRAIL SERIES FRONT BUMPER, part number 45210 (sold separately), only four (4) 3" cube lights may be mounted, with two on either side of the relocated ACC module. Install and wire lights according to the lighting manufacturer's instructions.
14. With the help of a friend, lift the bumper and install it on to the vehicle and use the six (6) factory bumper bolts (three per side) to fasten the bumper to the Bronco's bumper mounts. It may be necessary to reach behind the bumper mounting flange to align the floating nut plate. Use a 15mm ratchet and socket to tighten the bumper bolts until just snug, but not tight.



FIG. 13

15. With the bolts snug, step back and observe the bumper to see whether it is visually parallel to the Bronco's body and grille. If it is out of alignment, square it up and then tighten the bumper bolts to factory specifications.



FIG. 14

16. Complete any electrical connections for auxiliary lights (if desired) and any other accessories that have been mounted to the bumper, according to each accessory manufacturer's instructions.
17. Install the aluminum Lower Mesh panel using the ten (10) supplied M6-1.00 X 20MM SS Button Head Cap Screws. The plate may be passed through its designated hole at an angle and then maneuvered into position on the inside surface of the bumper. Tighten the fasteners with a 4mm hex key.
18. If a front skid plate is to be used, install it according to the instructions that came with it.
19. **VERIFY ALL FASTENERS ARE PROPERLY TORQUED BEFORE DRIVING VEHICLE.**



FIG. 16

*Congratulations! Your installation is complete.*  
**RETORQUE ALL NUTS, BOLTS AND LUGS AFTER 100 MILES AND PERIODICALLY THEREAFTER.**

**LIMITED LIFETIME WARRANTY**

*ICON Vehicle Dynamics warrants to the original retail purchaser who owns the vehicle on which the product was originally installed. ICON Vehicle Dynamics does not warrant the product for finish, alterations, modifications and/or installation contrary to ICON Vehicle Dynamics instructions. ICON Vehicle Dynamics products are not designed, nor are they intended to be installed on vehicles used in race applications, for racing purposes or for similar activities. (A "race" is defined as any contest between two or more vehicles, or a contest of one or more vehicles against the clock, whether or not such contest is for a prize). This warranty does not include coverage for police or taxi vehicles, race vehicles, or vehicles used for government or commercial purposes. Also excluded from this warranty are sales outside of the United States of America and Canada.*

*ICON Vehicle Dynamics' obligation under this warranty is limited to the repair or replacement, at ICON Vehicle Dynamics' discretion, of the defective product. Any and all costs of removal, installation or re-installation, freight charges and incidental or consequential damages are expressly excluded from this warranty. Items that are subject to wear are not considered defective when worn and are not covered.*

*ICON Vehicle Dynamics components must be installed as a complete kit as shown in our current application guide. Any substitutions or exemptions of required components will immediately void the warranty. Some finish damage may happen to parts during shipping and is not covered under warranty.*

*This warranty is expressly in lieu of all other warranties expressed or implied. This warranty shall not apply to any product that has been improperly installed, modified or customized subject to accident, negligence, abuse or misuse.*

**ICON VEHICLE DYNAMICS®**

PERFORMANCE SUSPENSION SYSTEMS AND SHOCK ABSORBERS

7929 Lincoln Ave. Riverside, CA 92504  
Phone: 951.689.ICON Fax: 951.689.1016  
[www.iconvehicledynamics.com](http://www.iconvehicledynamics.com)

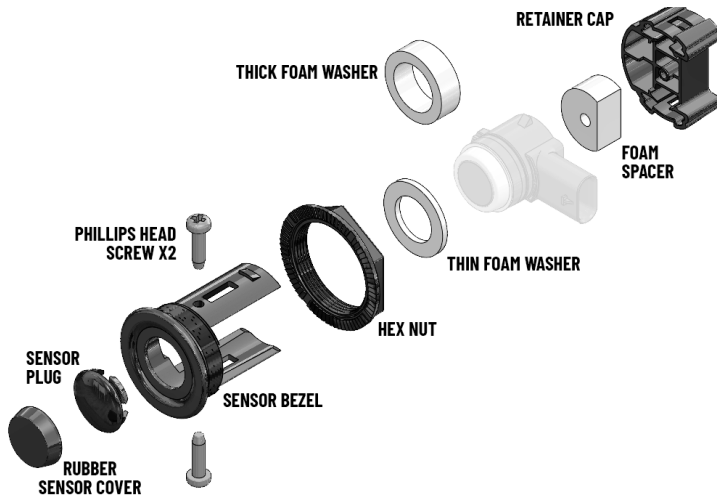
**FOLLOW US ON FACEBOOK!**



## UNIVERSAL PARKING SENSOR MOUNT KIT

DOCUMENT: INST\_295300\_REVA • UPDATED: AUG 2022

Thank you for purchasing this ICON Vehicle Dynamics product. Please read through this entire document before proceeding with installation. If you are not confident in your mechanical skills, please seek the help of a professional to perform the installation. Check your packages immediately upon arrival to ensure that everything listed is included, and to check for damage during shipping. If anything is missing or damaged, or if you need technical assistance with any aspect of this installation, call (951) 689-ICON as soon as possible.



### INSTALLATION INSTRUCTIONS

**NOTE:** Some of the photos included in the following instructions depict installation on a Jeep JK. In these instances the procedure as depicted in the photo is identical to installation on a Jeep JL or JT.

1. Ensure the vehicle is placed on a flat, level surface with the transmission in PARK (or first gear for vehicles equipped with a manual transmission), the tires chocked, and the emergency brake ON. Wear safety glasses from this point forward.
2. Begin by slipping the sensor bezel through the sensor cutout on the bumper and securing it by using the plastic hex nut. Orientate the bezel to ensure that the sensor does not collide with the bumper.

### APPLICATION

These installation instructions apply to the following products:

295300 BUMPER SENSOR MOUNT 4-PACK

### COMPONENTS INCLUDED

- (4) PLASTIC SENSOR BEZEL
- (4) PLASTIC HEX NUT
- (4) PLASTIC RETAINING CAP
- (4) PLASTIC SENSOR PLUG
- (6) RUBBER SENSOR COVER
- (8) PHILLIPS HEAD SCREW
- (4) THICK FOAM WASHER (ø1.00" x 0.375")
- (4) THIN FOAM WASHER (ø1.00" x 0.079")
- (4) FOAM SPACER

### IMPORTANT NOTICES - PLEASE READ FIRST

- ✓ **READ ALL INSTRUCTIONS THOROUGHLY FROM START TO FINISH BEFORE BEGINNING INSTALLATION! IF THESE INSTRUCTIONS ARE NOT PROPERLY FOLLOWED VEHICLE OR COMPONENT DAMAGE MAY RESULT!**
- ✓ **ICON VEHICLE DYNAMICS RECOMMENDS ALL INSTALLATION TO BE PERFORMED BY A PROFESSIONAL SHOP/SERVICE TECHNICIAN. PRODUCT FAILURE CAUSED BY IMPROPER INSTALLATION WILL NOT BE COVERED UNDER ICON'S WARRANTY POLICY.**



FIG. 1



FIG. 2

**NOTE:** For vehicle not equipped with sensors, use the sensor plug to cover the bezel opening and skip the remaining steps.



FIG. 3

**NOTE:** The remaining steps are while the Sensor Bezel and additional components are mounted into the



bumper. But in the following photos the procedure is shown outside of the bumper for clarity.

- Depending on the vehicle make, take sensor and slip it through the back of the bezel and determine if the front face is loose on the bezel opening. If the sensor has too much play, peel off the back of the  $\varnothing 1.00'' \times 0.079''$  washer and slip over the front face of the sensor without covering the face. If desired, you may take off the rubber grommet on the sensor for a cleaner fitment.



FIG. 4



FIG. 5

Note: For Toyota use the provided  $\varnothing 1.00'' \times 0.375''$  foam spacer.



FIG. 6

- Peel off the back of the foam spacer and place it onto the inner face of the retaining cap or directly onto the back of the sensor. Place the retaining cap onto the sensor bezel and gently press until the cap is secured.



FIG. 7



FIG. 8

Note: On sensors where the wire harness receptacle has a 90-degree elbow (so that the wire harness connects parallel to the sensor body, as shown in the image below), ensure that the connection clears the flat surface on the retaining cap.



FIG. 9

- If the sensor is still loose, use the provided Phillips Head Screws and gently thread until the sensor is tight. Ensure you don't overtighten to prevent damage to the sensor.



FIG. 10

- After the installation is completed, if one of the sensors is being triggered by other aftermarket products, use one of the provided rubber sensor covers to suppress the signal.





FIG. 11

Note: If the cover is used, the sensor will not be operational.

7. Repeat the procedure for the remaining three (3) Sensor Mounts.

*Congratulations! Your installation is complete.*



ICON VEHICLE DYNAMICS®  
PERFORMANCE SUSPENSION SYSTEMS AND SHOCK ABSORBERS

7929 Lincoln Ave. Riverside, CA 92504  
Phone: 951.689.ICON Fax: 951.689.1016  
[www.iconvehicledynamics.com](http://www.iconvehicledynamics.com)



FOLLOW US ON FACEBOOK!

