



CENTER CONSOLE MOLLE PANEL - PASSENGER SIDE

(2021-2022+ BRONCO)

INSTALLATION INSTRUCTIONS

CONTENTS

- (1) Molle Panel
- (2) Allen Bolts w/ Flat Washers
- (1) Hex Bolt w/ Flat Washer

TOOLS REQUIRED

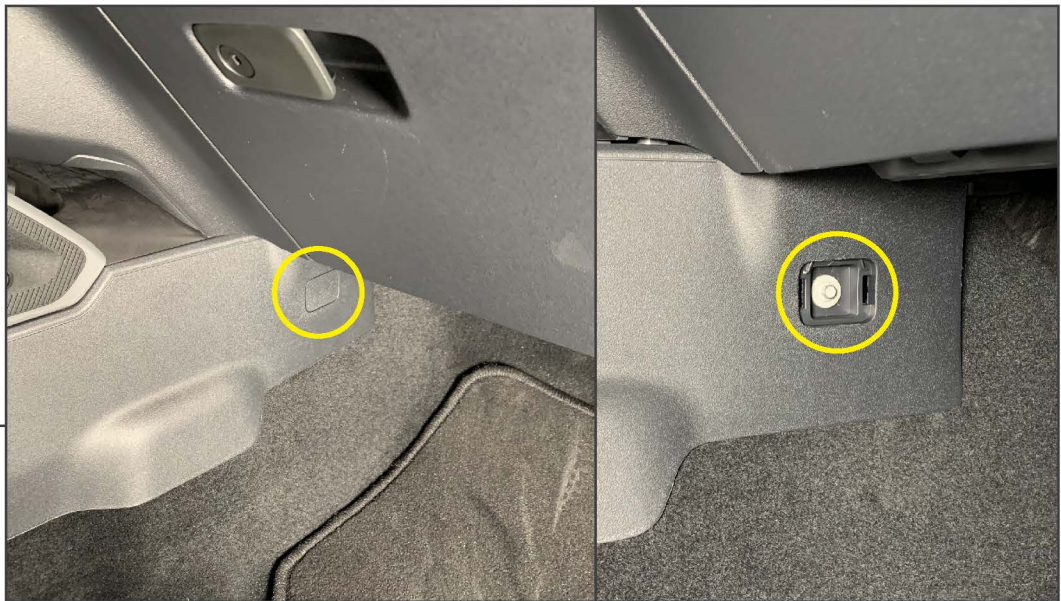
- Small Flathead Screwdriver
- T-30 Torx Socket
- 7mm, 8mm Sockets
- 4mm Allen Key/Socket
- Ratchet



STEP 1

Remove the (2) T-30 Torx bolts from the grab handle. Do not remove the grab handle.

Note: Hardware will not be reused.

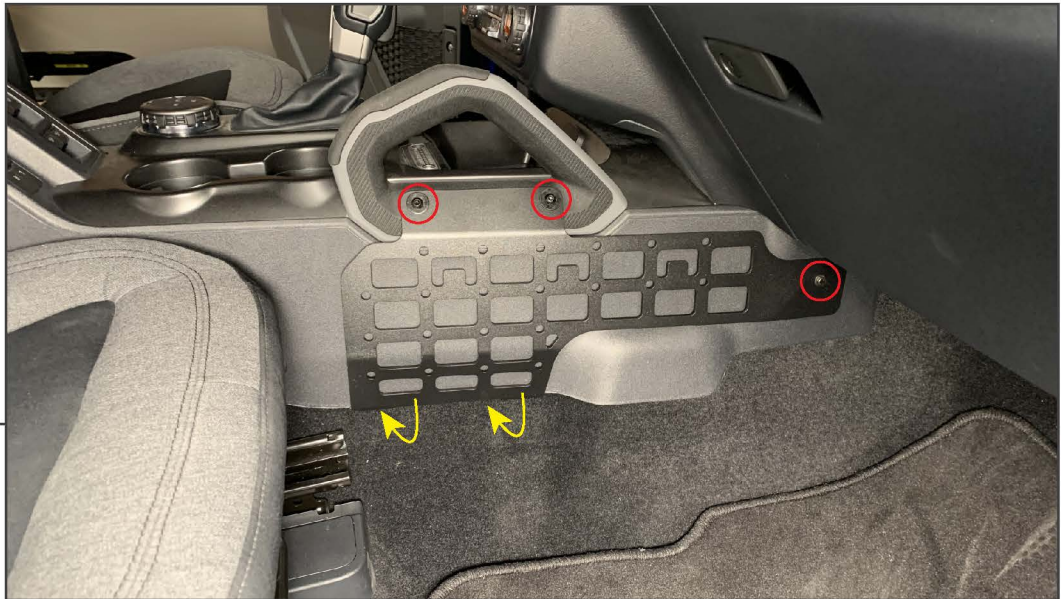


STEP 2

Using a small flathead screwdriver, remove the plastic cover from the side of the center console. Remove (1) 7mm bolt from the side of the center console.

Note: Hardware will not be reused.

STEP 3



Hook the bottom of the molle panel under the center console plastic. Secure the molle panel to the grab handle using (2) Allen bolts with flat washers. Secure the front of the molle panel using (1) Hex bolt with flat washer. Tighten hardware until secure.

STEP 4



Installation is now complete.