



EXTREME HD REAR BUMPER

(2021+ BRONCO)

INSTALLATION INSTRUCTIONS

CONTENTS

- (1) Bumper
- (2) 3/4" D-Rings
- (1) License Plate Bracket
- (1) LH Nut Plate
- (1) RH Nut Plate
- (1) LH Bumper End Cap
- (1) RH Bumper End Cap
- (1) LH Filler Panel
- (1) RH Filler Panel
- (1) License Plate Light Harness
- (1) Proximity Sensor Install Kit
- (4) M12x1.75 x 45mm Bolts
- (4) M12 Flat Washers
- (4) M12 Lock Washers
- (4) M10x1.50 x 35mm Bolts
- (2) M10x1.50 x 25mm Bolts
- (4) M10 Flat Washers (Large OD)
- (2) M10 Flat Washers (Small OD)
- (6) M10 Lock Washers
- (2) M10 Nuts
- (14) M6x1.00 x 20mm Allen Combo Bolts
- (8) M6 Flange Nuts
- (1) 4mm Allen Wrench

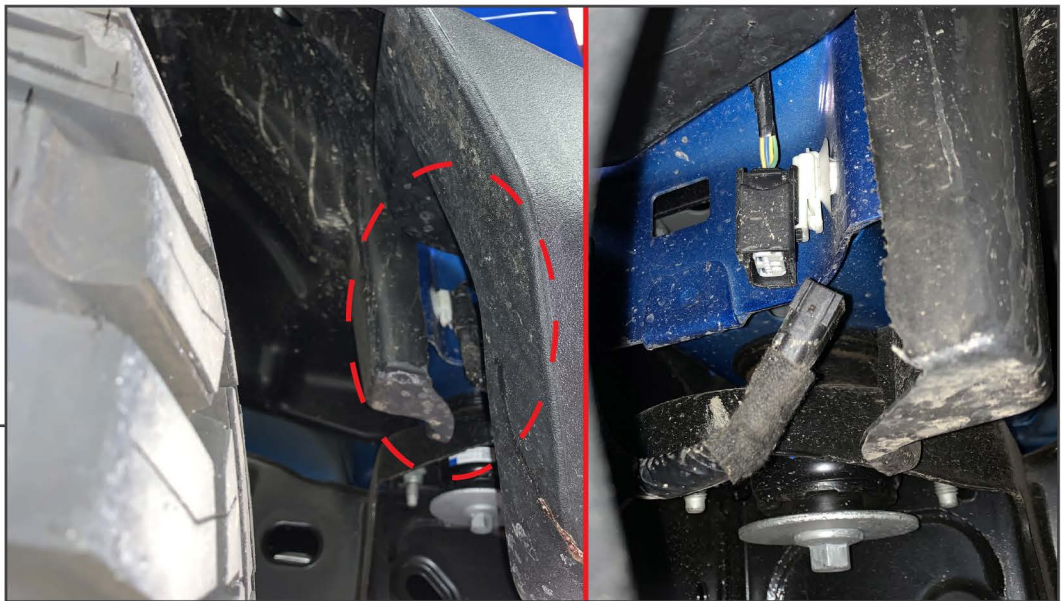
TOOLS REQUIRED

- 13mm, 15mm, 18mm Sockets
- Ratchet
- Panel Removal Tool
- Flathead Screwdriver

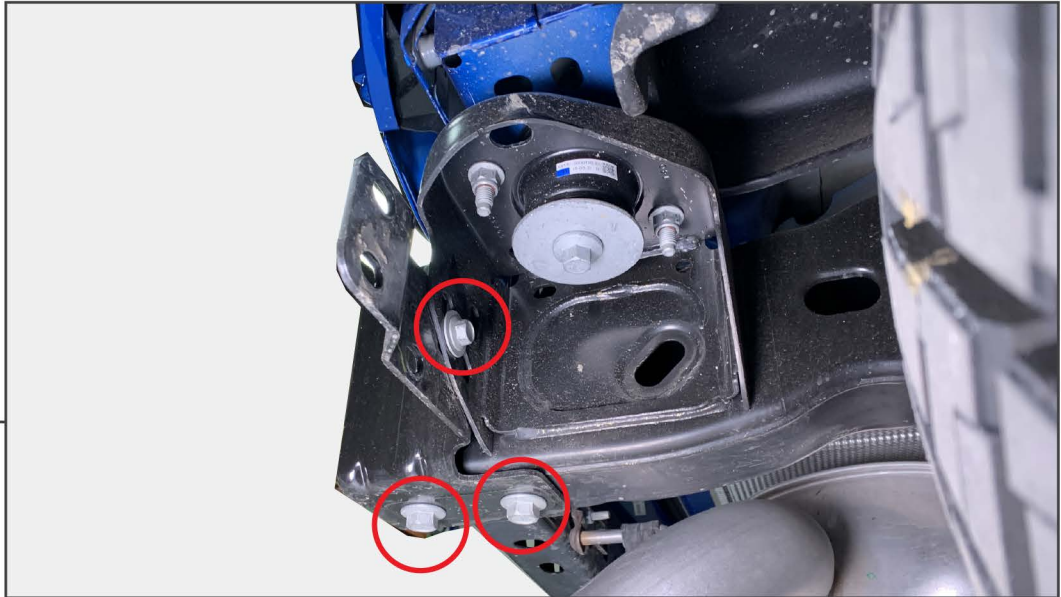
SKU # FB16445
Edited: 06/06/2022

**STEP 1**

Remove the (3) lug nuts from the spare tire and remove the spare tire from the vehicle.

**STEP 2**

Behind each rear wheel, disconnect (1) electrical connector per side to disconnect the rear backup sensors and the license plate lamp from the vehicle harness.

STEP 3

Along each rear frame rail, remove (1) 13mm bolt and (2) 18mm bolts from each side to remove the original bumper and tow hook from the vehicle.

STEP 4

Place the bumper face down on a soft surface. Remove the bumper mounting brackets by removing (8) 15mm bolts.

**STEP 5**

Unplug the license plate light and backup sensor harness from the bumper. Using a panel removal tool, remove all the wiring harness retaining push pins to remove the harness from the bumper.

**STEP 6**

Remove the backup sensors from the original bumper and transfer the sensors to the new bumper, if applicable. See the following steps for the different mounting styles.

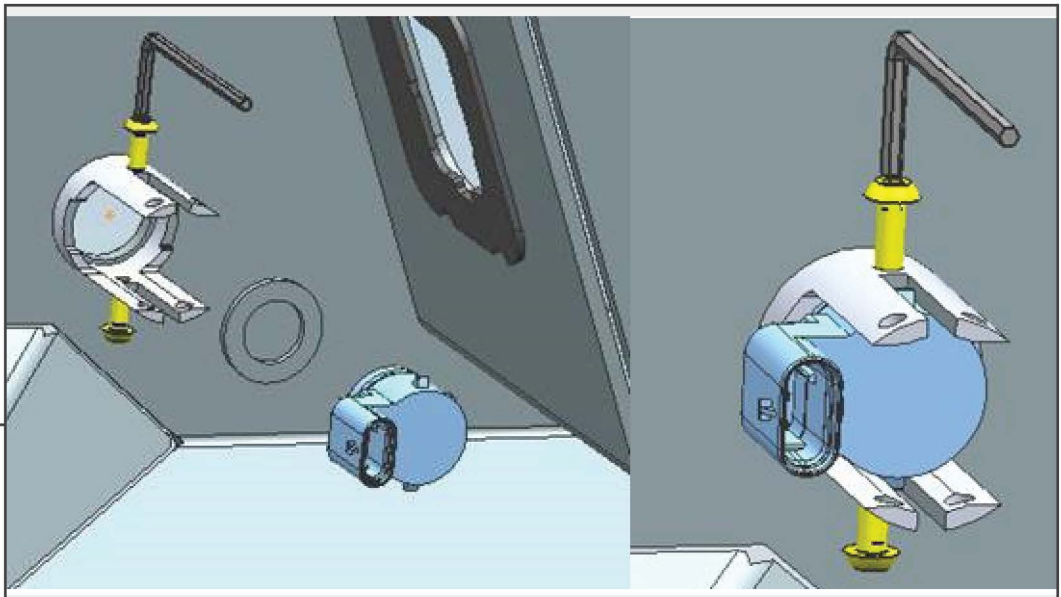
Proximity Sensor Mounting Options

BACKUP SENSORS



Optional: If equipped with back up sensors, remove the sensors from the bumper. Then remove the rubber gasket from the sensor. Prepare the sensor for re-installation by applying the supplied foam ring to the sensor. Then reference the following steps for the mounting options.

BACKUP SENSORS

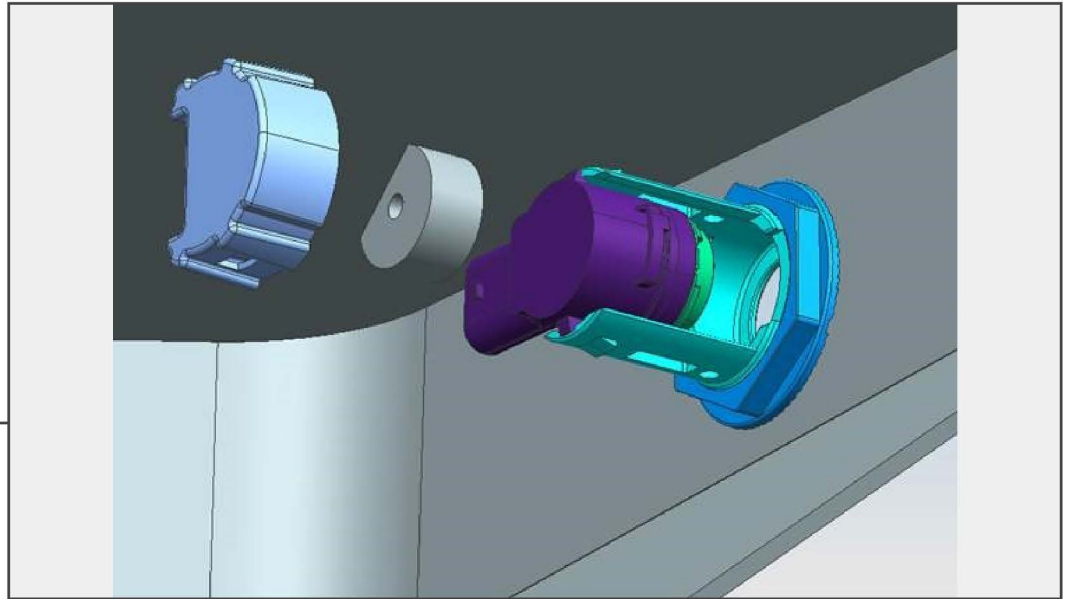


Optional Sensor Mounting: Using the provided M4 Allen screws lightly tighten the screws into the sensor to hold it in place.

****Note:** Over tightening the screws can damage the sensor.

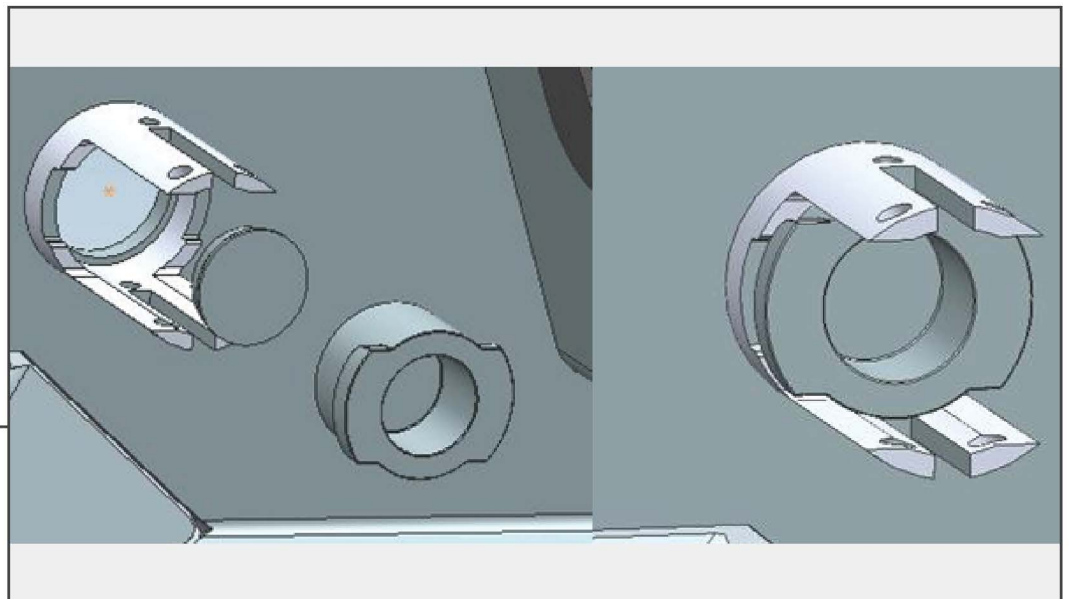
Proximity Sensor Mounting Options

BACKUP SENSORS

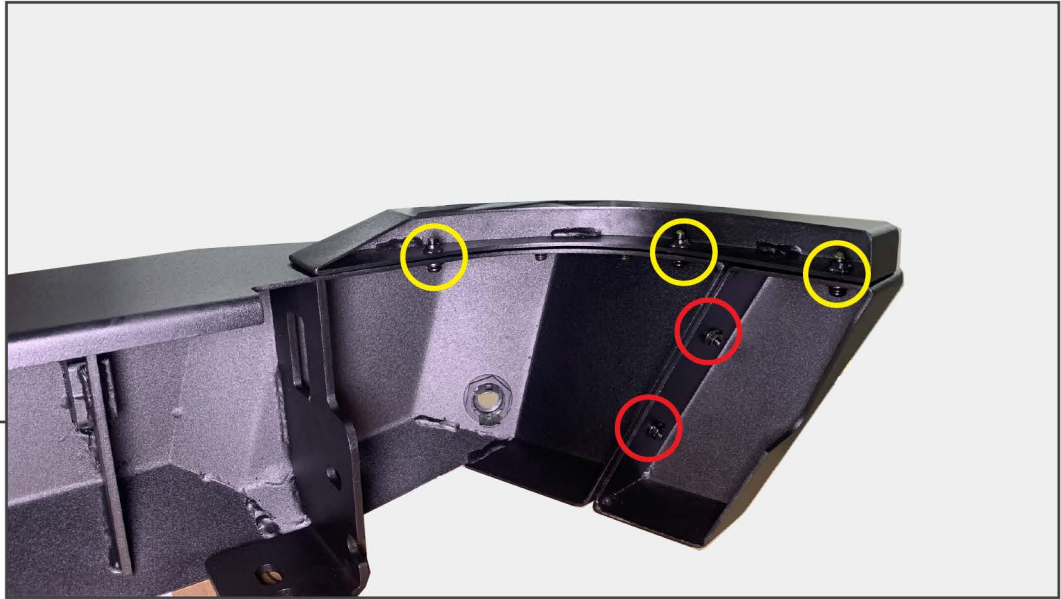


Optional Sensor Mounting: Place the round foam on the back of the sensor. Press the sensor into the bumper. Then clip the retaining plate onto the bumper to hold the sensor in place.

BACKUP SENSORS



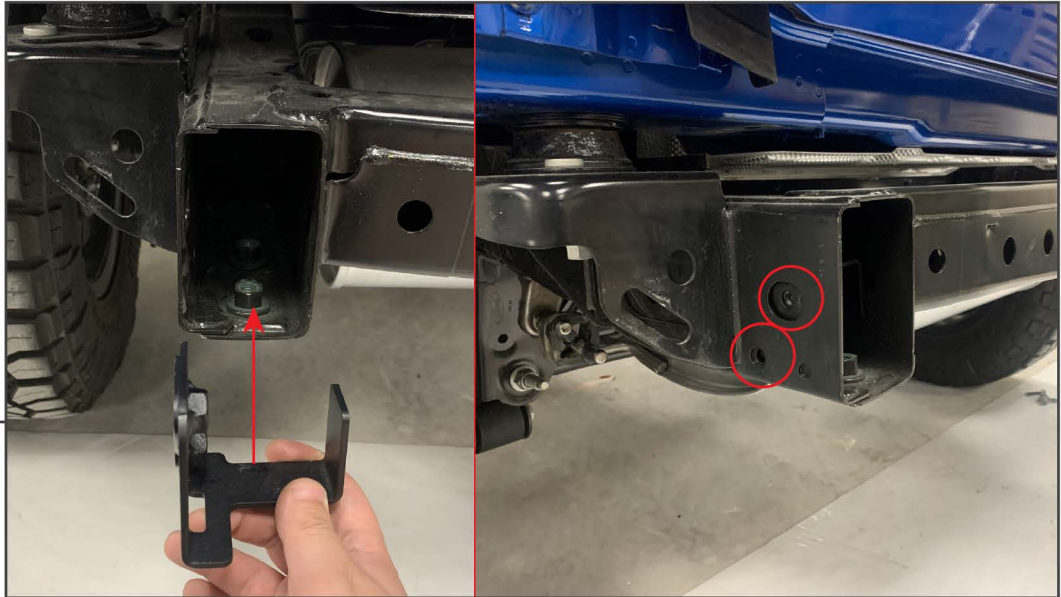
No Sensor: Mount the hard rubber plug to the front of the soft rubber plug. Press the assembly into the bumper so that the hard rubber plug is flush with the face of the bumper.

STEP 7

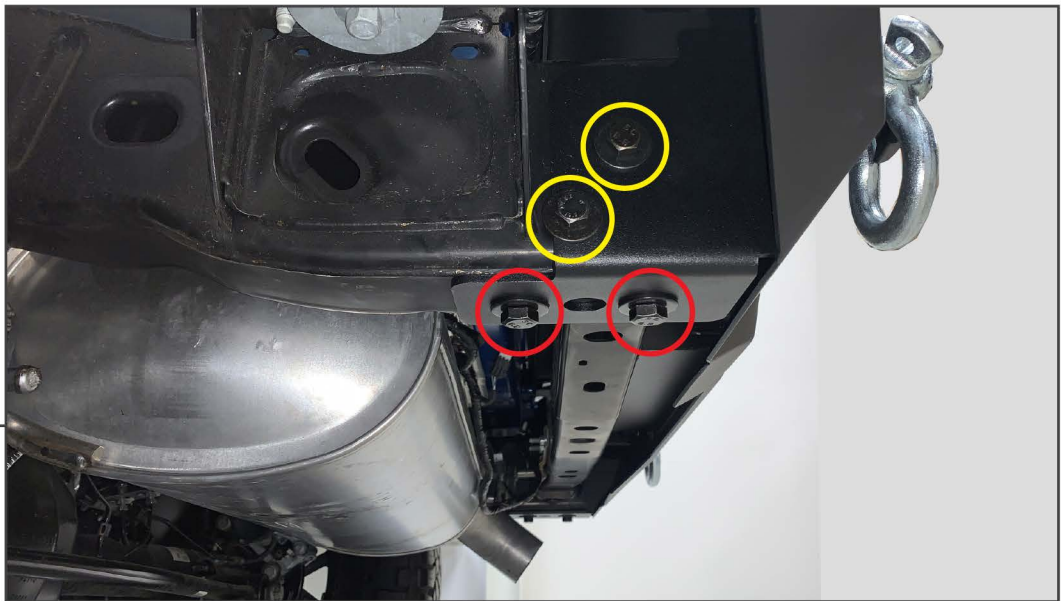
Secure the bumper end caps to the bumper using (2) M6 x 25mm bolts, and (2) M6 flange nuts per side. Secure the upper bumper filler panels using (3) M6 x 25mm bolts per side.

STEP 8

Secure the license plate mounting bracket to the bumper using (2) M10 x 25mm bolts, (2) M10 flat washers, (2) M10 lock washers, and (2) M10 flange nuts.

STEP 9

Insert the designated frame nut plates into the vehicle frame rail, as shown. Ensure the welded nuts align to the holes in the vehicle frame.

STEP 10

Mount the bumper to the vehicle using (2) M12 x 45mm bolts, (2) M12 flat washers, and (2) M12 lock washers per side at the bottom of the frame rail. Secure the bumper to the side frame rail into the previously installed nut plates using (2) M10 x 35mm bolts, (2) M10 flat washers, and (2) M10 lock washers per side.

**STEP 11**

Install the LED license plate bolts to the license plate bracket using the pre-installed hardware. Plug the harness connector into the vehicle license plate wiring harness.

**STEP 12**

Install the license plate to the license plate bracket using (4) M6 x 25mm bolts and (4) flange nuts.



STEP 13

Install the (2) 3/4" D-Rings to the mounting points.

Installation is now complete.