



ADVENTURE HD FRONT BUMPER

(2021-2023+ BRONCO)

INSTALLATION INSTRUCTIONS

CONTENTS

- (1) Bumper
- (1) LH Bumper Mounting Nut Plate
- (1) RH Bumper Mounting Nut Plate
- (1) LH Fog Light Bracket
- (1) RH Fog Light Bracket
- (1) LH Bumper End Cap
- (1) RH Bumper End Cap
- (1) Adaptive Cruise Control Block Off Plate
- (2) 3/4" D-Rings
- (1) Over-Rider Bar
- (6) M12x1.75 x 50mm Bolts
- (6) M12 Lock Washers
- (6) M12 Flat Washers
- (6) M8x1.25 x 25mm Allen Bolts
- (6) M8 Flat Washers
- (6) M8 Flange Nuts
- (3) M6x1.00 x 30mm Allen Bolts
- (12) M6x1.00 x 20mm Allen Bolts
- (15) M6 Lock Washers
- (30) M6 Flat Washers
- (15) M6 Nuts
- (1) Backup Sensor Transfer Kit
- (1) 4mm Allen Key
- (1) 5mm Allen Key

TOOLS REQUIRED

- 10mm, 13mm, 15mm, 16mm, 18mm Sockets
- Plastic Panel Removal Tool
- Phillips Screwdriver
- 4mm, 5mm Allen Key/Socket

WINCH BUMPER SPACER

- (2) Bumper Spacers
- (6) M12x1.75 x 65mm Bolts
- (6) M12 Lock Washers
- (6) M12 Flat Washers

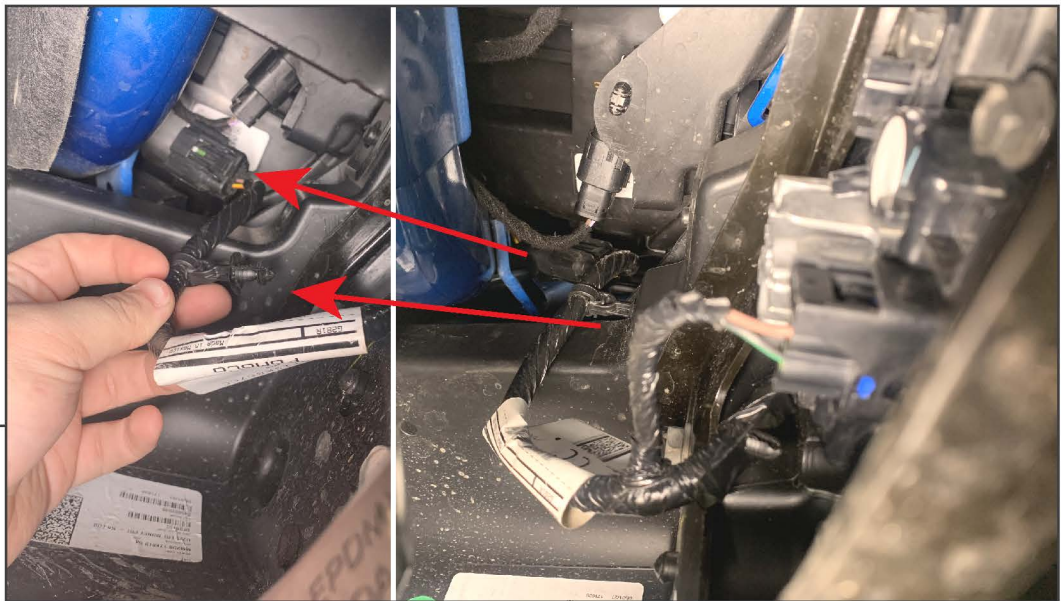
SKU # FB15954
Edited: 06/02/2022

STEP 1



Remove (6) 15mm bolts from the lower splash shield.

STEP 2



From under the bumper, reach upwards and unplug the fog light harness main connector located under the LH (Driver Side) headlight. Pull the plastic harness retainer from the vehicle.



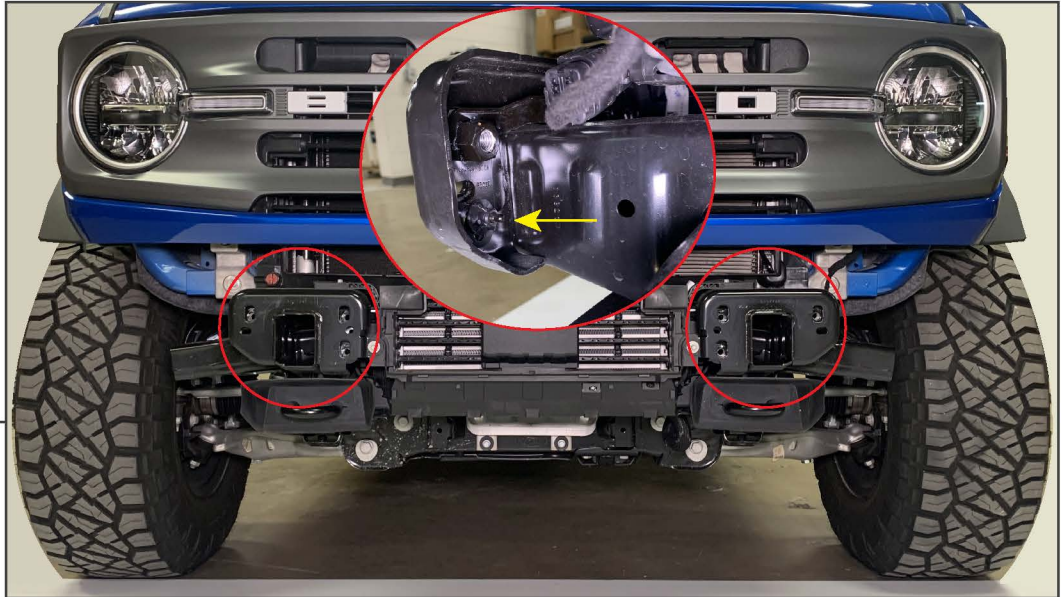
STEP 3

Remove the (2) plastic bumper covers using a plastic panel removal tool to reveal the bumper mounting hardware.



STEP 4

Remove (6) 15mm bolts from the front bumper, and remove the bumper assembly from the vehicle.

**STEP 5**

Unthread the (1) plastic wing nut from each of the bumper mounting nut plates, and remove each nut plate from the vehicle.

Note: If the vehicle has Adaptive Cruise Control, see step 11-16 for module removal/transfer.

**STEP 6**

Unplug each fog light from the main harness, and remove each fog light from the bumper by removing (4) 10mm bolts.

**STEP 7**

Remove (4) 10mm bolts and (4) 15mm bolts to remove the rear bumper brace to release the fog light harness from the bumper assembly.

**STEP 8**

Unplug the wiring harness from each fog light and proximity sensor, if applicable. The proximity sensors can be used on the new bumper.

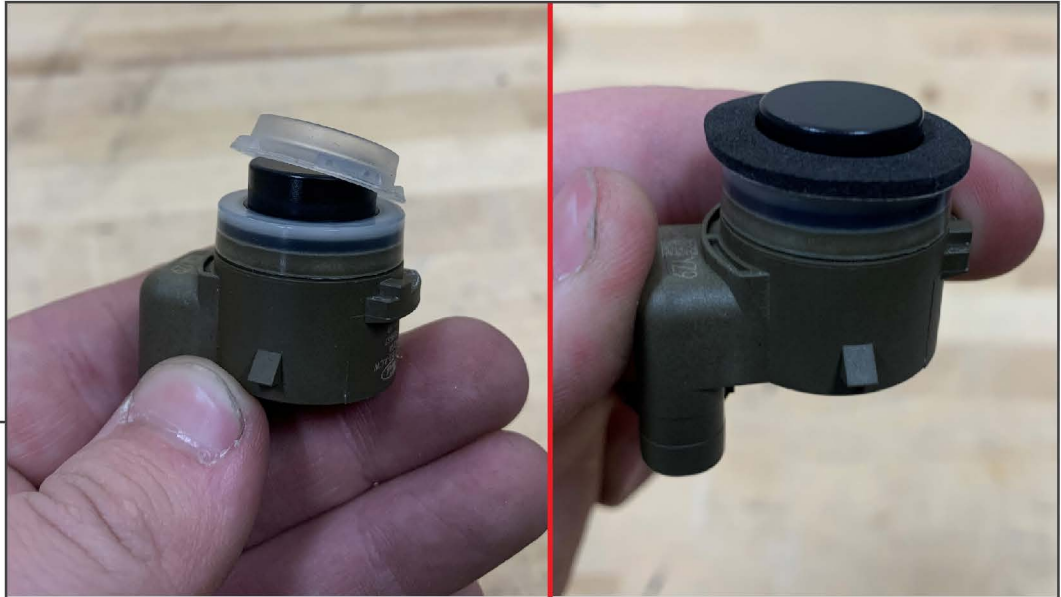
Place the new bumper on a soft surface. See the following steps regarding proximity sensor mounting. Once proximity sensors are addressed, proceed to Step 9.

**SENSOR
REMOVAL**

Optional: If equipped with bumper sensors, unplug the sensors by pressing the connector tab inwards while pulling up. Disconnect the wiring harness retaining clips from the bumper using a plastic panel removal tool and remove the harness.

**SENSOR
REMOVAL**

Remove the sensors from the bumper by using a small flat head screwdriver or pick to gently pry back the mounting tabs.

**SENSOR
REMOVAL**

Remove the rubber gasket from around the sensor. Install the provided foam ring gasket around the sensor.

**INSTALLATION
(OPTION 1)**

Place the sensor into the designated port, ensuring the mounting tabs are within the slots. Adhere (1) rubber grommet to the sensor using the attached adhesive. Place (1) foam pad onto the rubber grommet. Place the (1) plastic cap onto the assembly, ensuring the (2) tabs lock into place to secure the sensor tightly to the port.

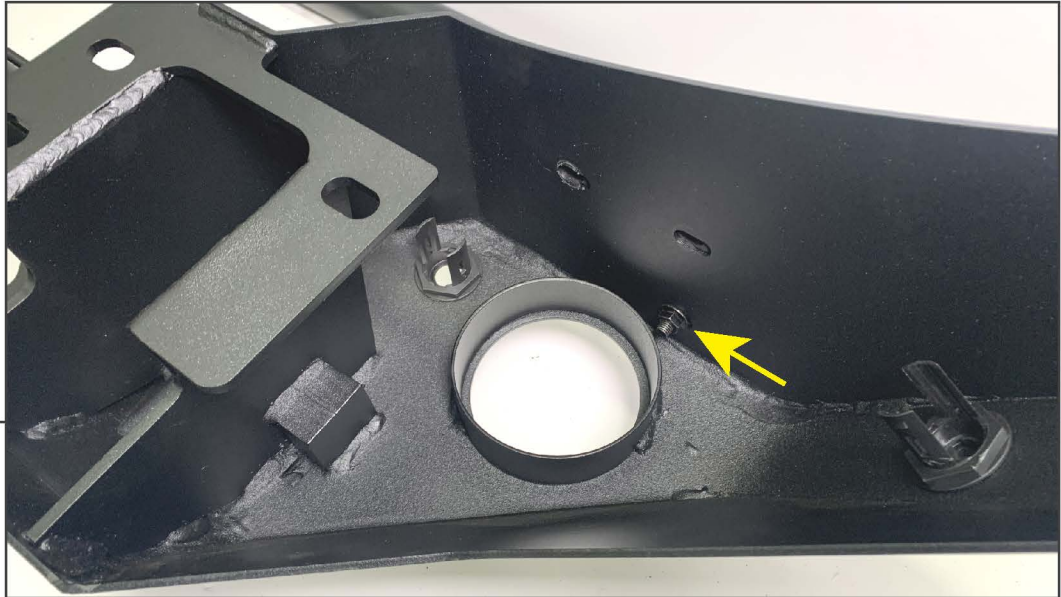
**INSTALLATION
(OPTION 2)**

Place the sensor into the designated port, ensuring the mounting tabs are within the slots. Using (2) Phillips screws, gently tighten the screws until moderate pressure is on the sides of the sensor to hold the sensor into place.

Note: Do NOT over-tighten the screws as the sensor can become damaged.

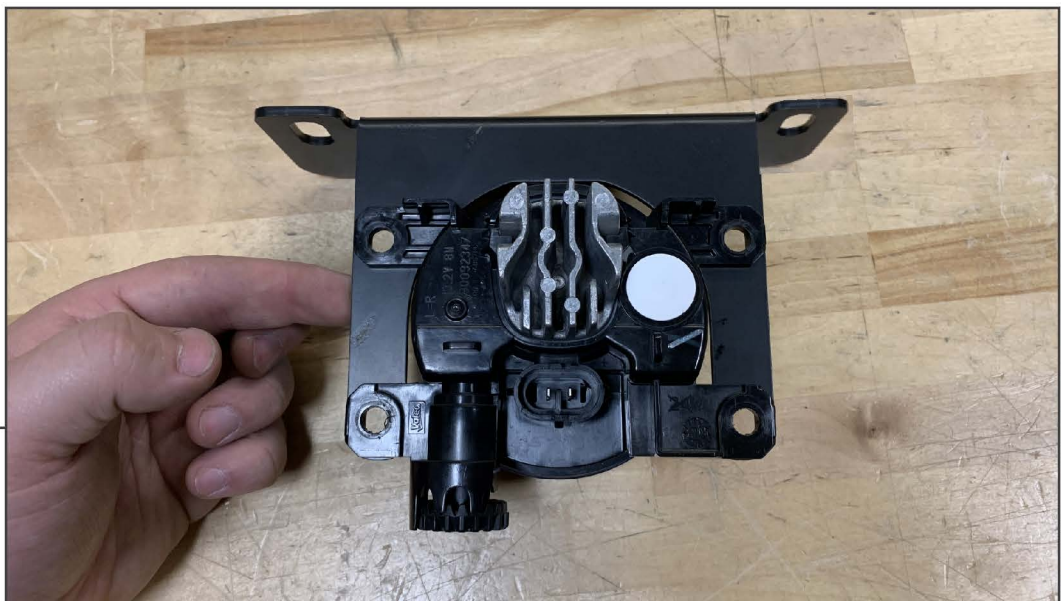
**OPTION 3
(NO SENSORS)**

If vehicle is not equipped with sensors, press the plastic plug into the sensor port until the plug is flush with the port.

**STEP 9**

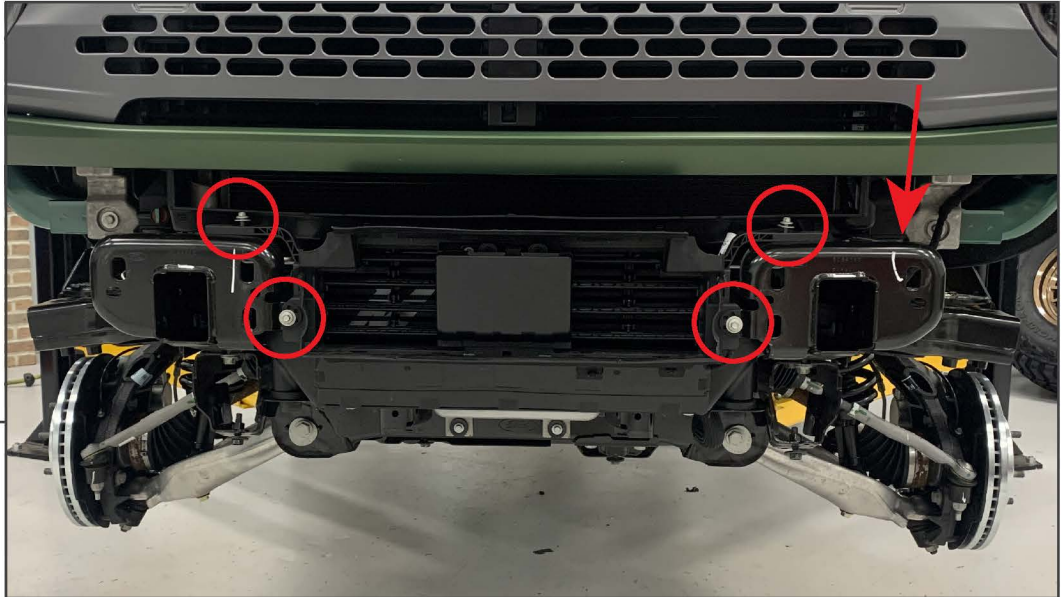
Place the bumper on a soft surface. Loosely install the over-rider bar to the bumper using (1) M8 x 25mm Allen bolt, (1) M8 flat washer, and (1) M8 flange nut per side.

Note: Ensure the bolts are located at the front most bolt hole, do not fully tighten for adjustment later.

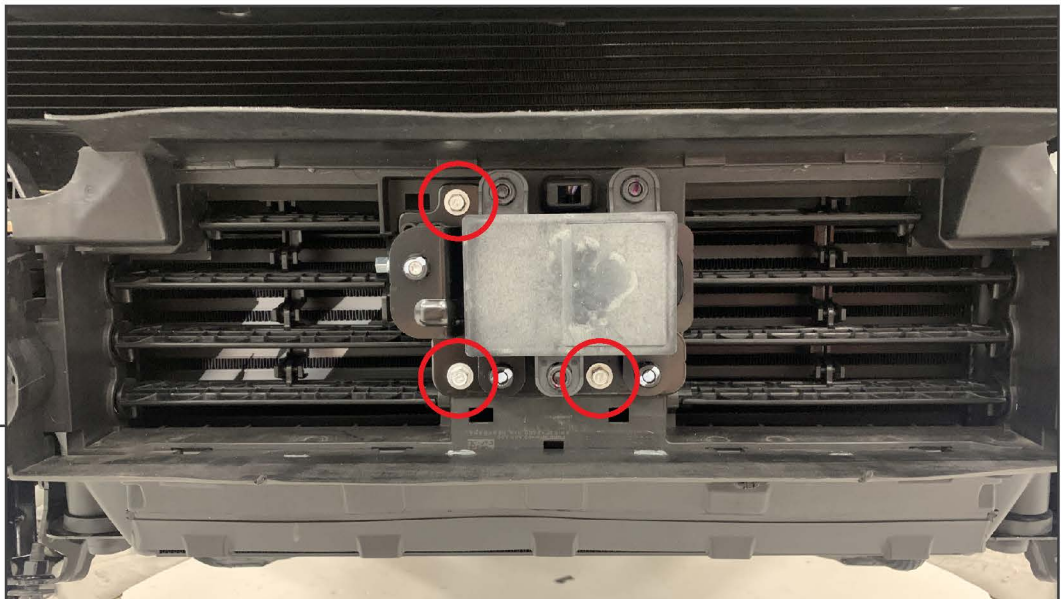
**STEP 10**

Secure the fog light to the fog light mounting bracket and secure using (4) M6 x 30mm Allen bolts, (4) M6 lock washers, (8) M6 flat washers, and (4) M6 nuts. Tighten until secure.

Repeat this step for the opposite side of the vehicle.

STEP 11

With the bumper removed, locate the front lower shutter assembly. Unplug the wiring harness connector along the LH side of the vehicle, and remove (4) 8mm bolts from the shutter assembly. Remove the shutter assembly from the vehicle and place on a workable surface.

STEP 12

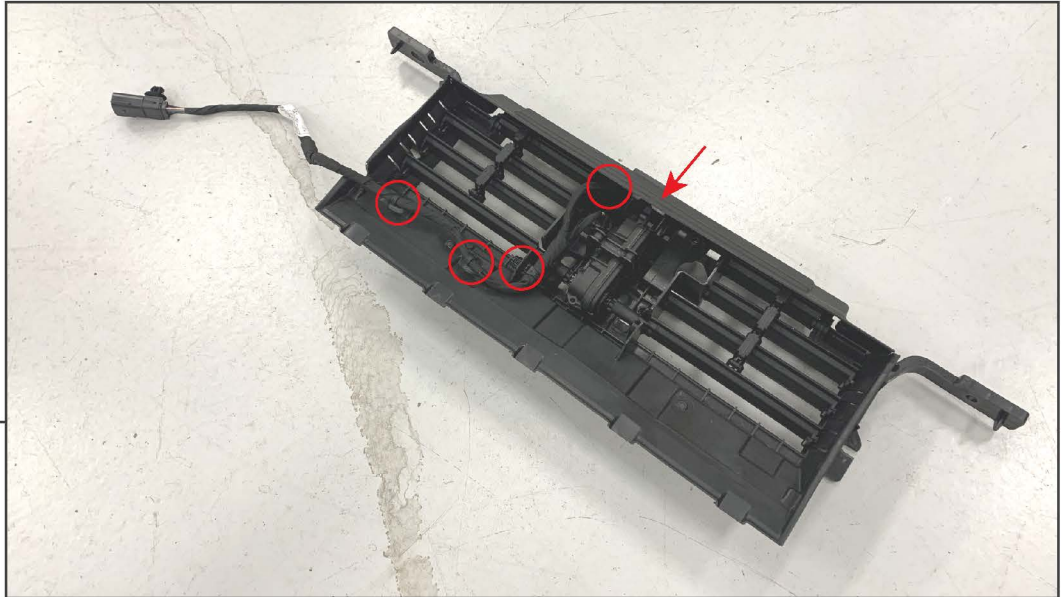
Remove (3) 8mm bolts from the Adaptive Cruise Control [ACC] module.

**STEP 13**

Unplug the ACC module from the shutter assembly wiring harness.

**STEP 14**

Using a pry tool, gently pry the ACC module away from the retaining bracket. The brackets are secured to the module using friction-fit ball studs.

STEP 15

Unplug the shutter assembly motor by sliding the red lock, and pressing the tab. Then, use a pry tool to dislodge the wiring harness from the shutter assembly. With the harness removed, mount the shutter assembly to the vehicle using the original (4) 8mm bolts.

STEP 16

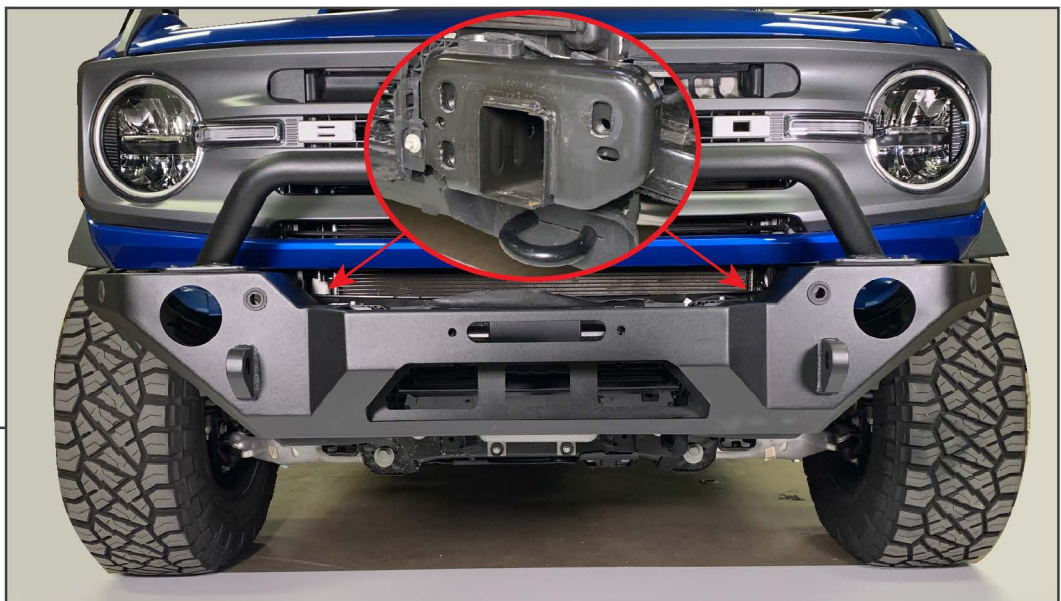
Mount the ACC module to the bumper using (3) M6 x 25mm bolts, (3) M6 flat washers, and (3) M6 flange nuts, tighten until secure.

With the bumper mounted to the vehicle, route the wiring harness to the ACC module, shutter assembly motor, and the vehicle chassis connector. Clip the lower (3) clips into the vehicle shutter assembly to retain the harness. **Ensure the harness is routed away from any moving parts of the shutter assembly and is not stressed when mounted.

**STEP 17**

Secure the fog light bracket to the bumper using (2) M8 x 25mm Allen bolts, (2) M8 flat washers, and (2) M8 flange nuts. Ensure the hardware passes through the over-rider bar, bumper, and fog light bracket.

Repeat this step for the opposite side of the vehicle.

**STEP 18**

Place the (2) bumper nut mounting plates behind each of the vehicle frame rails. Using (3) M12 x 50mm bolts, (3) M12 lock washers, and (3) M12 flat washers per side, secure the bumper to the vehicle. *Apply tape to the back side of the bumper nut mounting plates to assist installation.

Note: Some winches may interfere with the vehicle painted trim panel. For additional clearance, fit the (2) bumper spacers in-between the frame rail and the bumper, and secure into place using the (6) M12x1.75 x 65mm bolts, lock washers, and flat washers.

**STEP 19**

Install the bumper end caps using (2) M6 x 30mm bolts, (4) M6 flat washers, (2) M6 lock washers, and (2) M6 nuts per side. Install the Adaptive Cruise Control (ACC) block off plate OR the vehicle ACC module to the bumper using (3) M6 x 30mm bolts, (6) M6 flat washers, (3) M6 lock washers, and (3) M6 nuts.

Note: The provided ACC block off plate is directional.

**STEP 20**

Install the (2) 3/4" D-Rings into the bumper mounting points. Plug the fog lights into the vehicle fog light main connector.

Installation is now complete.