



DOOR ENTRY GUARDS

(2021+ BRONCO - 4 DOOR)

INSTALLATION INSTRUCTIONS

CONTENTS

- (1) LH Front Entry Guard
- (1) RH Front Entry Guard
- (1) LH Rear Entry Guard
- (1) RH Rear Entry Guard

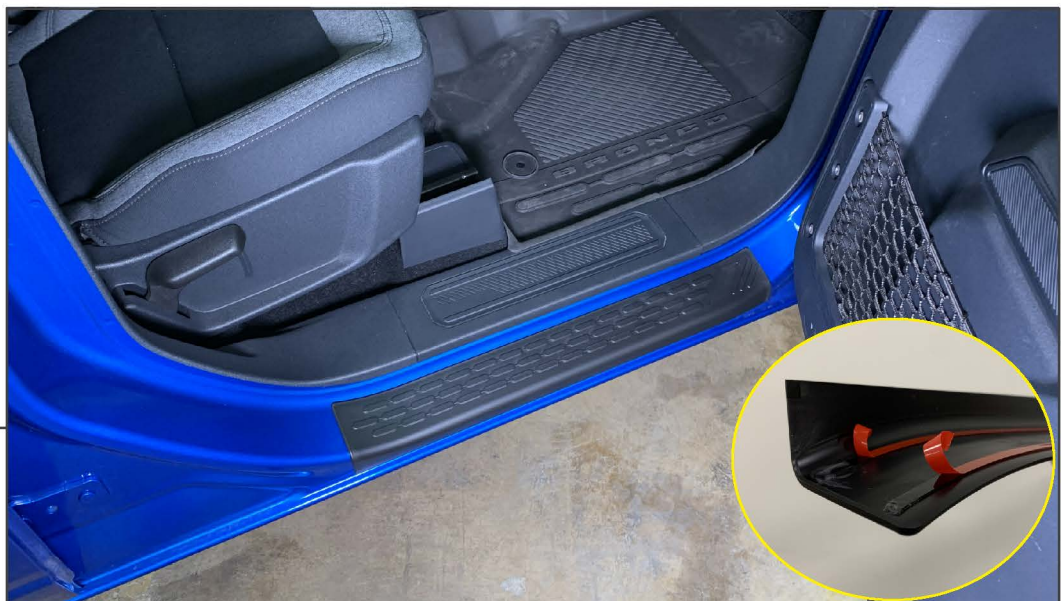
TOOLS REQUIRED

- Isopropyl Alcohol
- Microfiber Cloth



STEP 1

Using the designated door entry guard, test fit the guard to the vehicle before removing the adhesive tape.



STEP 2

Once familiar with fitment, clean the vehicle using isopropyl and a microfiber cloth at the guard adhesion location. Peel the double sided tape backing, and adhere the entry guard to the vehicle. Press the entry guard down firmly to ensure proper adhesion.

Repeat steps 1-2 to the remaining entry guards. Installation is now complete.