



OUTLAW S E R I E S

Installation Instructions 818120 2021-26 FORD BRONCO WITH 2.3L & 2.7L ENGINE

OVERVIEW:

1. Take a moment to read and understand these instructions before installing your Flowmaster performance system.

NOTE: Please inventory all parts now before continuing and if necessary, report any missing items to our tech line. This will avoid potentially stranding your vehicle until any missing replacement parts arrive.

ITM #	PART #	DESCRIPTION	QTY.
1	8430152-593	Outlaw Muffler	1
N/A	PK1083	Hardware Package includes:	1
2	529HA	Right Rear Frame Hanger	1
3	530HA	Left Rear Frame Hanger	1
4	HA168	Red Rubber Hanger	2
5	HW208	3/8"-16 x 1 Bolt	2
6	HW103	Nut 3/8"-16	2
7	HW303	3/8" Flat Washer	2
8	HW309	3/8" Lock Washer	2
9	HW502	3/8" Hanger Keeper	4
10	3401401	M8 Lock Nut	2

REMOVE STOCK EXHAUST SYSTEM:

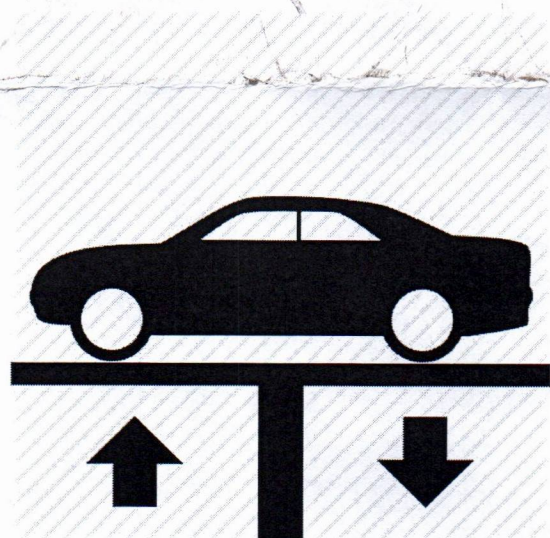
2. Raise vehicle up on a hoist or rack to working height. If you don't have access to a hoist or rack, support vehicle with jack stands.

WARNING

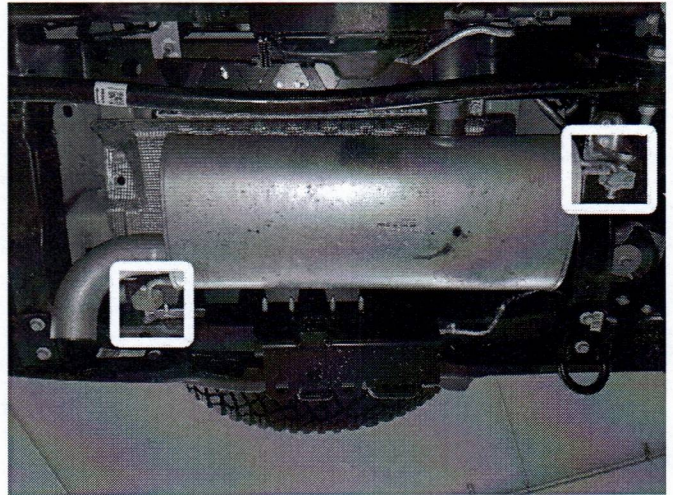
Avoid serious burns! Allow your vehicle time to cool completely before touching any factory engine components.

To ease preparation and installation of your new kit:

- Apply penetrating lubricant to mounts, bolts and clamps before you remove them.
- Use stands as necessary to support parts as you detach them from your vehicle and again as you install new parts.



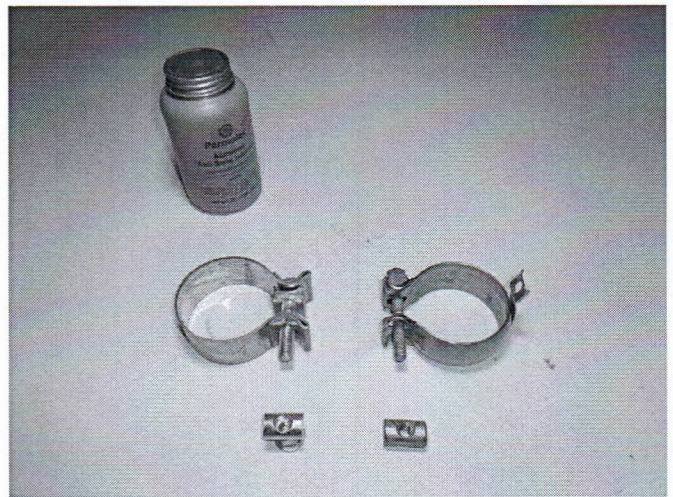
- Support exhaust with stands. Loosen clamp, separate both rubber isolators from frame then dismount muffler (leaving isolators on it) and remove it from vehicle.



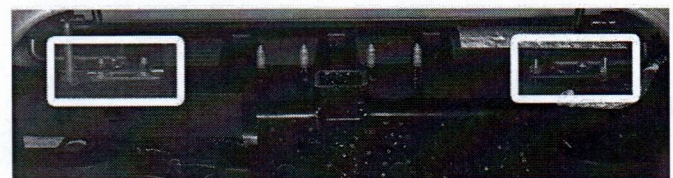
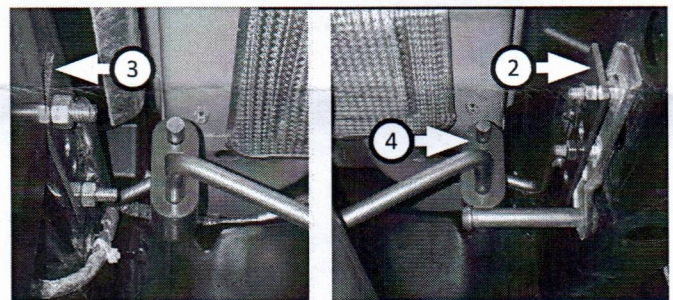
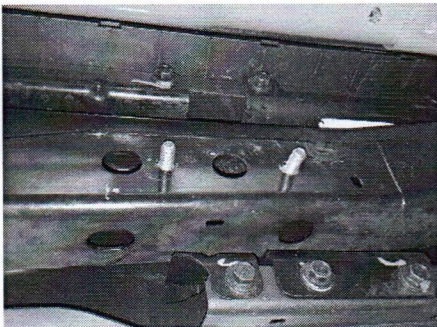
INSTALL FLOWMASTER EXHAUST SYSTEM:

- Apply anti-seize compound to threaded fasteners for a more secure install.

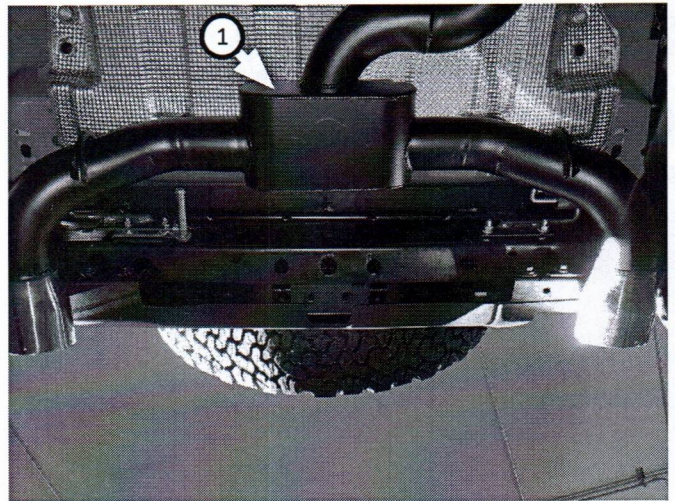
NOTE: The image in this step is intended for illustrative purposes only and may or may not accurately reflect components included in your kit.



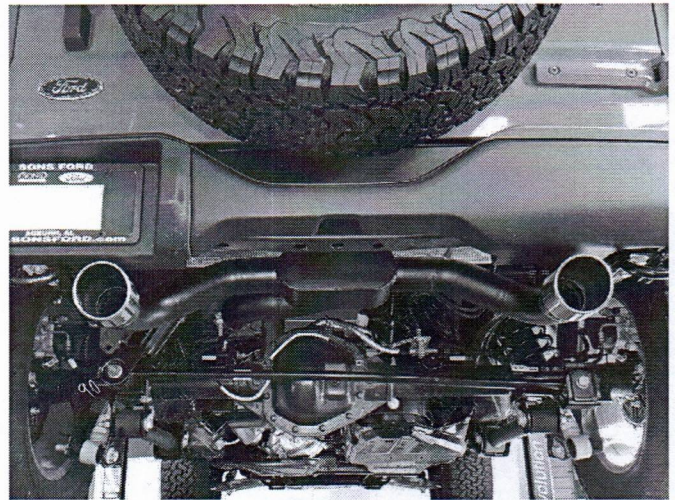
- Place **right rear frame hanger (2)** onto driver side isolator mount studs. Fasten it in place with (x2) **lock nuts (10)**. Place **left rear frame hanger (3)** onto passenger side frame, fastening it in place with (x2 ea.) **bolts (5)**, **lock washers (8)**, **flat washers (7)** and **nuts (6)**. Place **rubber hanger (4)** onto rear frame hangers.



6. Connect **muffler (1)** to mid pipe, inserting wire hanger into rubber hanger. Adjust exhaust components for fit; maintaining 1/2" clearance and compensating for suspension, travel and vibration then tighten all clamps.



7. Fit (x4) **hanger keepers (9)** onto each hanger.
8. Recommended: Secure slip-fit connections with a 1-inch tack weld then spray high-temp paint over each weld to prevent rust and premature corrosion.



Congratulations, the installation of your FLOWMASTER performance exhaust system is now complete!





OUTLAW

S E R I E S

Installation Diagram
818120
2021-26 FORD BRONCO
WITH 2.3L & 2.7L ENGINE

