



---

# 40” LIGHT BAR W/ WINDSHIELD MOUNTING BRACKETS

(2021+ FORD BRONCO)

---

## INSTALLATION INSTRUCTIONS

### CONTENTS

---

- (1) 40” Light Bar
- (1) Light Bar Wiring Harness
- (1) LH Mounting Bracket
- (1) RH Mounting Bracket
- (8) Cable Ties
- (4) Adhesive Cable Mounts
- (2) M8x1.25 x 15mm Allen Bolts
- (2) M8x1.25 x 25mm Bolts
- (4) M8 Lock Washers
- (4) M8 Flat Washers
- (2) M8 Nuts
- (1) M6x1.00 x 15mm Bolt
- (2) M6 Flange Nuts
- (4) Allen Key

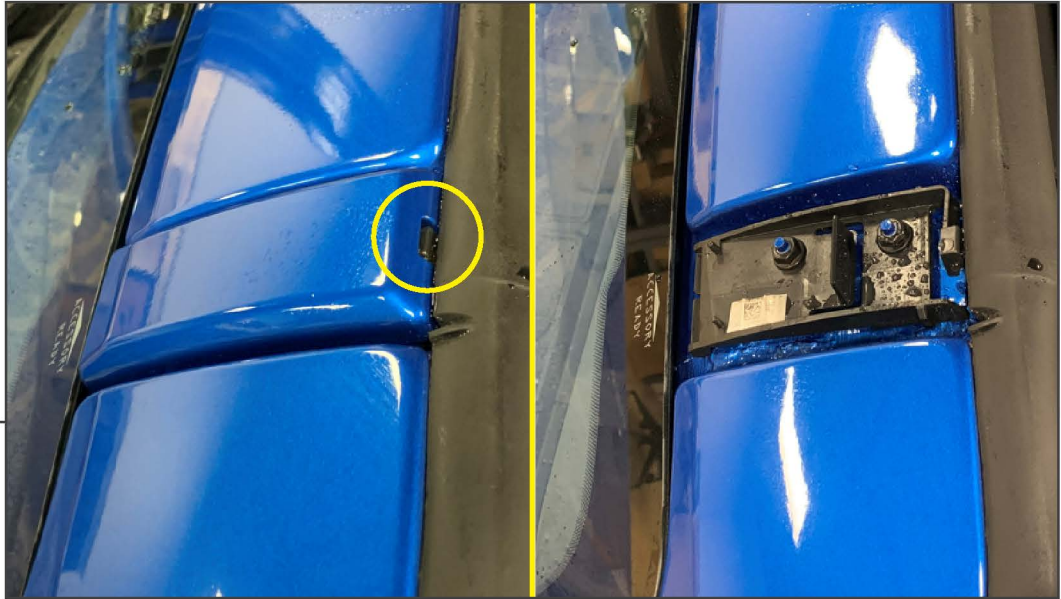
### TOOLS REQUIRED

---

- 10mm Socket
- T-30 Torx Socket/Bit
- Ratchet
- Razor Knife
- Adjustable Wrench

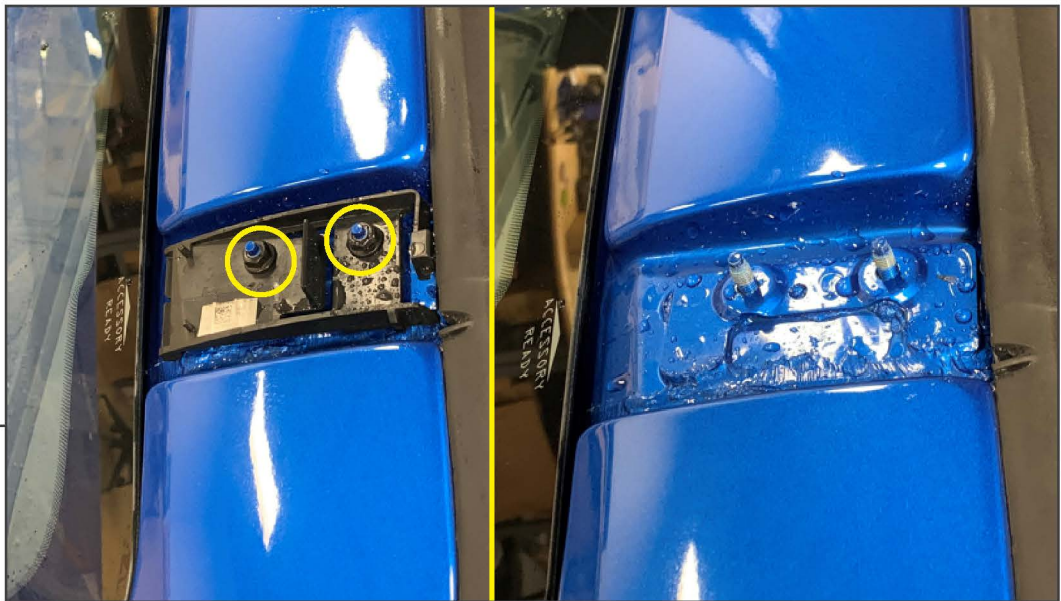
SKU # FB13197

## STEP 1



Locate the accessory mounting point above the windshield on each side of the vehicle. Press the plastic tab inwards to release the painted cap from the vehicle.

## STEP 2



Remove (2) 10mm nuts from the cap retainer. Remove the retainer from the vehicle.

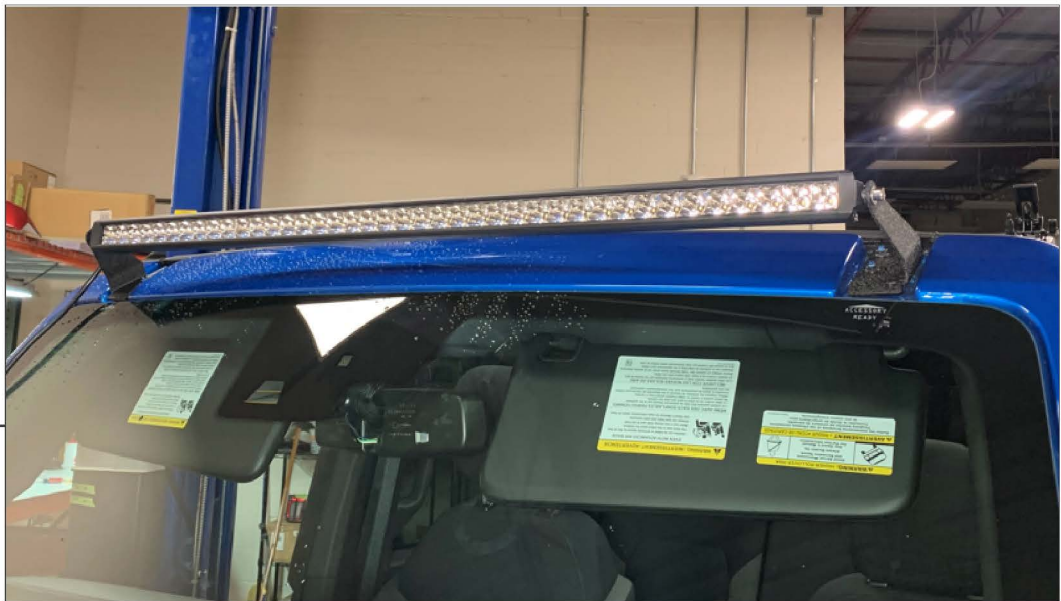
**Note:** Hardware will be reused.



## STEP 3

Install the designated light bar mounting bracket to the vehicle using the (2) original 10mm nuts. Do not fully tighten nuts to allow for adjustments later.

Repeat steps 1-3 to the opposite side of the vehicle to install the remaining light bar bracket.



## STEP 4

Mount the light bar to the brackets using (2) M8 x 15mm Allen bolts, (2) M8 lock washers, and (2) M8 flat washers. Tighten the hardware evenly. Ensure light bar harness is on the RH side of the vehicle when installed.





## STEP 5

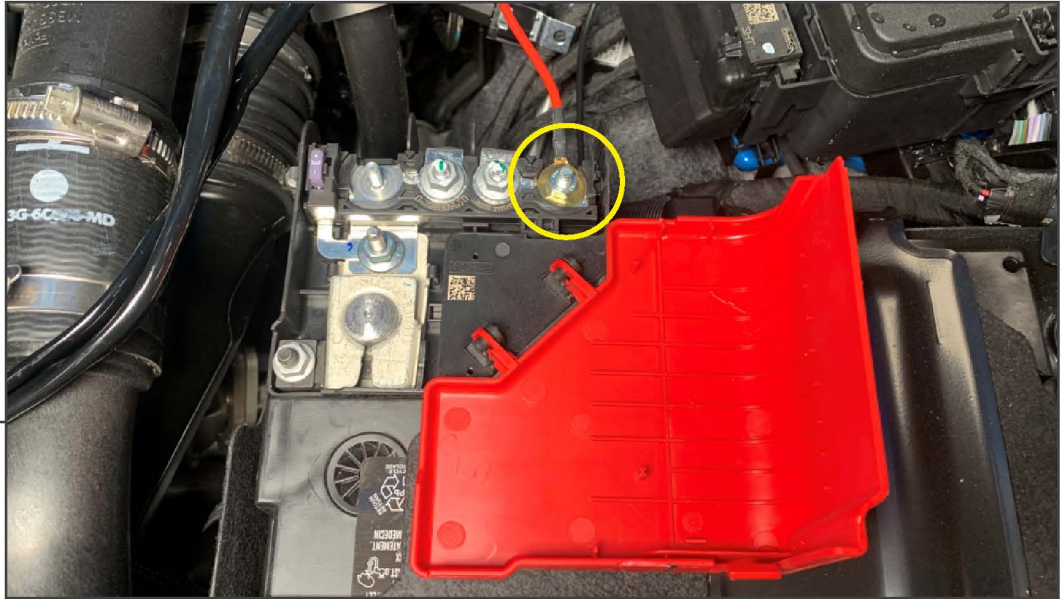
Plug the light bar into the included light bar wiring harness. Tightly secure the wiring harness down the side of the windshield using the (4) adhesive cable mounts. Remove (1) T-30 Torx bolt from the windshield cowl, and remove the antenna using an adjustable wrench. Tuck the wiring harness into the cowl, then re-install the (1) T-30 Torx bolt and the antenna into the vehicle.



## STEP 6

Route the light bar switch towards the inside of the vehicle through a suitable firewall grommet. Carefully cut the grommet with a razor knife to allow entry to the vehicle cab.

## STEP 7



Secure the positive lead to the unused battery stud using the included (1) M6 flange nut.

## STEP 8



Route the negative lead to the open hole in the battery terminal. Secure the negative lead using the included (1) M6 bolt and (1) M6 flange nut.





---

## STEP 9

Neatly route the wiring harness in the engine bay, and secure into place using the included (8) cable ties. Ensure to avoid any hot/moving components.

Installation is now complete.