



40” LIGHT BAR W/ WINDSHIELD MOUNTING BRACKETS

(2021+ FORD BRONCO)

INSTALLATION INSTRUCTIONS

CONTENTS

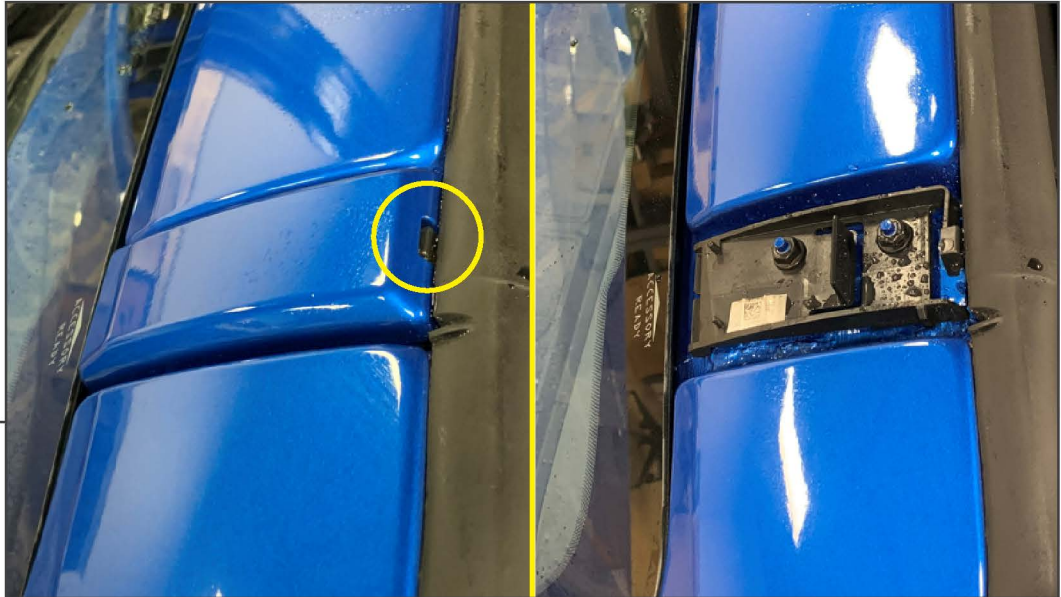
- (1) 40” Light Bar
- (1) Light Bar Wiring Harness
- (1) LH Mounting Bracket
- (1) RH Mounting Bracket
- (8) Cable Ties
- (4) Adhesive Cable Mounts
- (2) M8x1.25 x 15mm Allen Bolts
- (2) M8x1.25 x 25mm Bolts
- (4) M8 Lock Washers
- (4) M8 Flat Washers
- (2) M8 Nuts
- (1) M6x1.00 x 15mm Bolt
- (2) M6 Flange Nuts
- (1) Allen Key

TOOLS REQUIRED

- 10mm Socket
- T-30 Torx Socket/Bit
- Ratchet
- Razor Knife
- Adjustable Wrench

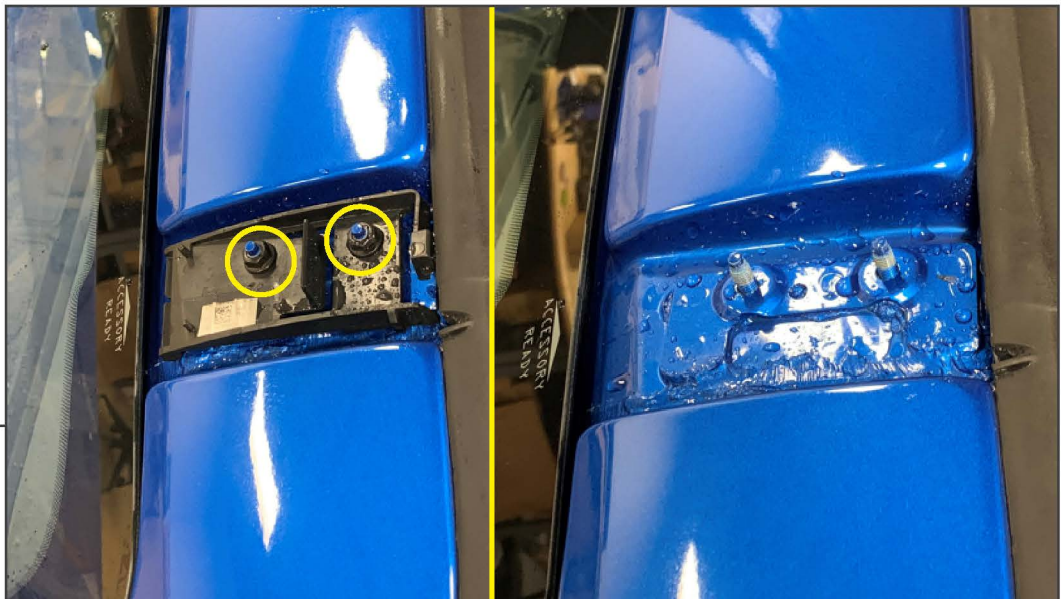
SKU # FB13196

STEP 1



Locate the accessory mounting point above the windshield on each side of the vehicle. Press the plastic tab inwards to release the painted cap from the vehicle.

STEP 2



Remove (2) 10mm nuts from the cap retainer. Remove the retainer from the vehicle.

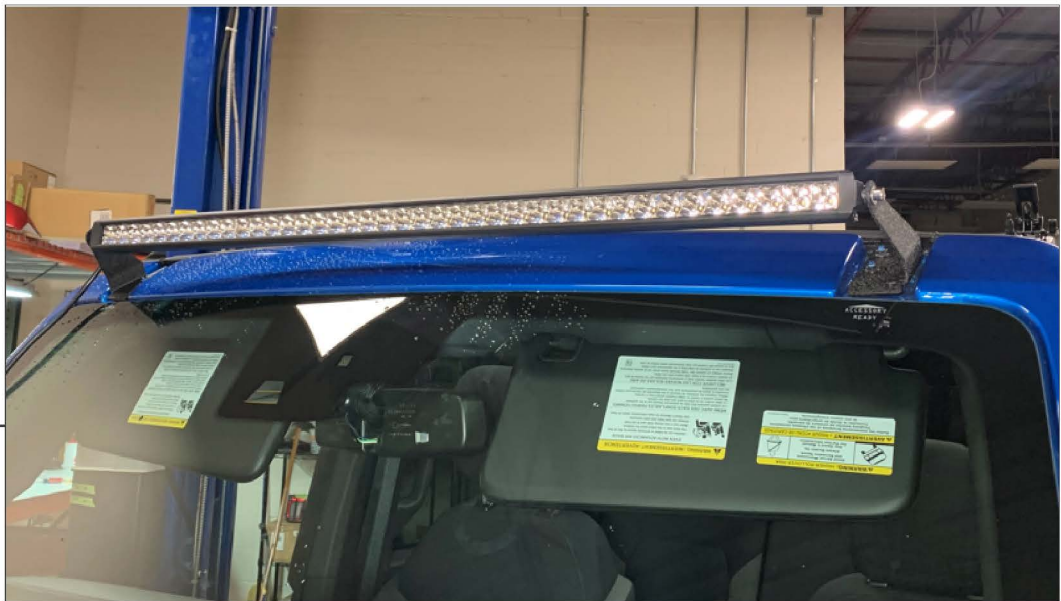
Note: Hardware will be reused.



STEP 3

Install the designated light bar mounting bracket to the vehicle using the (2) original 10mm nuts. Do not fully tighten nuts to allow for adjustments later.

Repeat steps 1-3 to the opposite side of the vehicle to install the remaining light bar bracket.



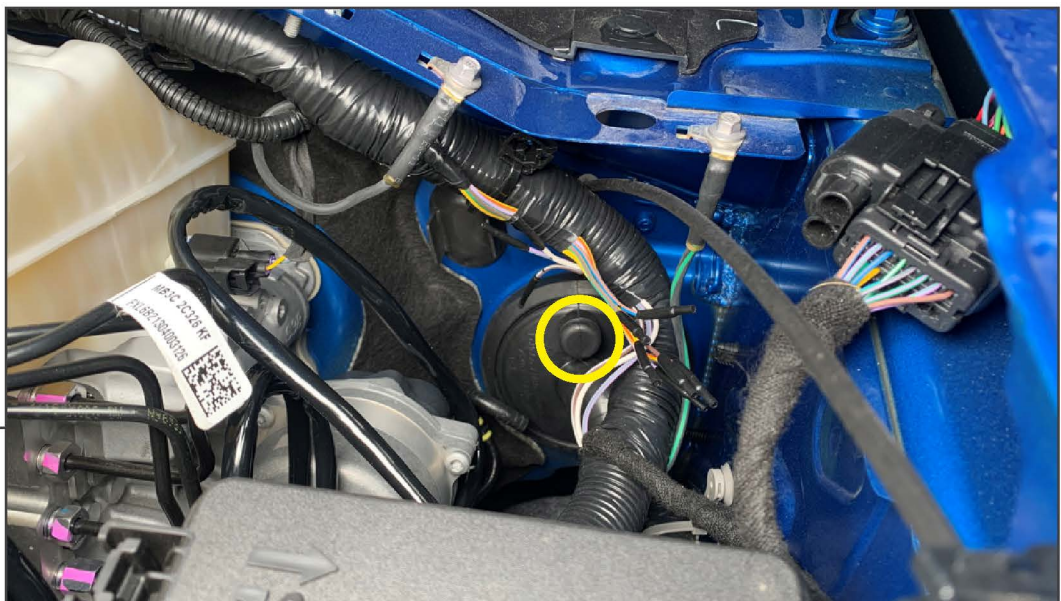
STEP 4

Mount the light bar to the brackets using (2) M8 x 15mm Allen bolts, (2) M8 lock washers, and (2) M8 flat washers. Tighten the hardware evenly. Ensure light bar harness is on the RH side of the vehicle when installed.



STEP 5

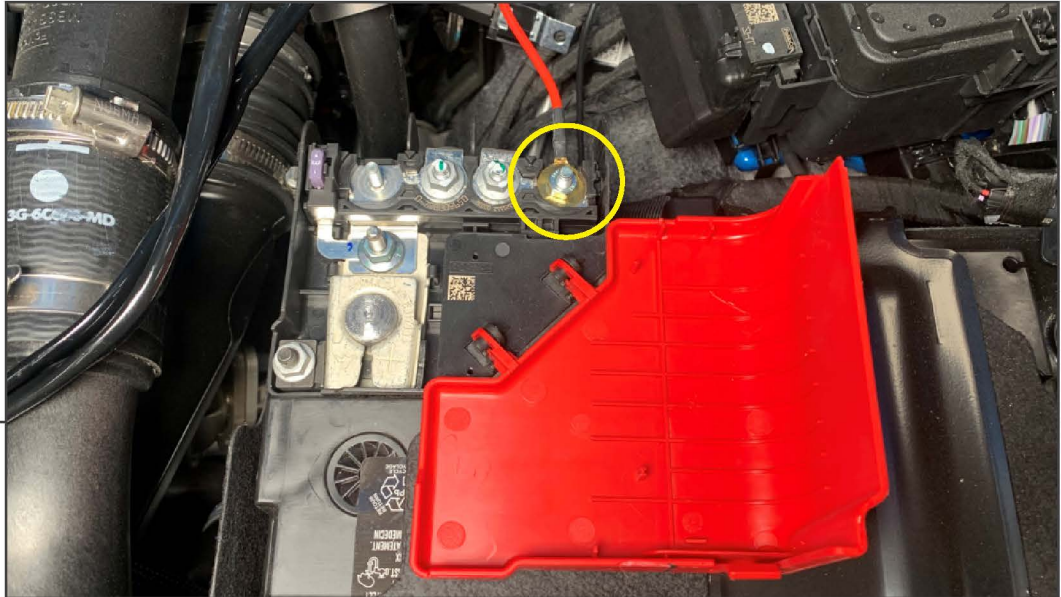
Plug the light bar into the included light bar wiring harness. Tightly secure the wiring harness down the side of the windshield using the (4) adhesive cable mounts. Remove (1) T-30 Torx bolt from the windshield cowl, and remove the antenna using an adjustable wrench. Tuck the wiring harness into the cowl, then re-install the (1) T-30 Torx bolt and the antenna into the vehicle.



STEP 6

Route the light bar switch towards the inside of the vehicle through a suitable firewall grommet. Carefully cut the grommet with a razor knife to allow entry to the vehicle cab.

STEP 7



Secure the positive lead to the unused battery stud using the included (1) M6 flange nut.

STEP 8



Route the negative lead to the open hole in the battery terminal. Secure the negative lead using the included (1) M6 bolt and (1) M6 flange nut.



STEP 9

Neatly route the wiring harness in the engine bay, and secure into place using the included (8) cable ties. Ensure to avoid any hot/moving components.

Installation is now complete.