

iArmor[®] Series

INSTALLATION INSTRUCTIONS

PART#: IA-N310H

BEFORE INSTALLATION

REMOVE CONTENTS FROM BOX. VERIFY ALL PARTS ARE PRESENT. READ INSTRUCTIONS CAREFULLY BEFORE STARTING INSTALLATION. ASSISTANCE IS RECOMMENDED. THANK YOU FOR CHOOSING OUR PRODUCT!

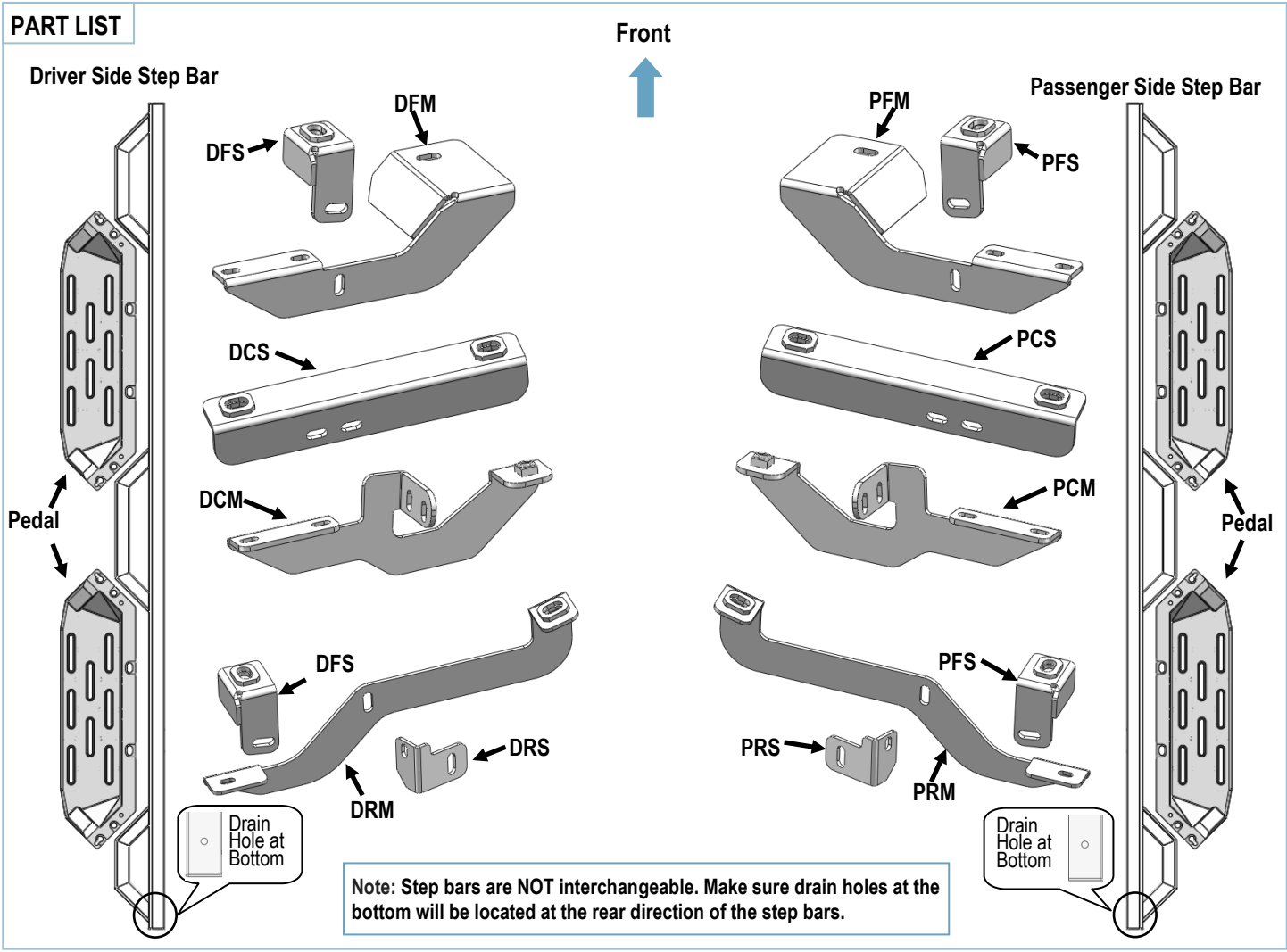
These instructions are provided for reference only. We strongly recommend installation by a professional installer for the best results. We are not responsible for any damage caused during installation.

*ROCKER PANEL MOUNT

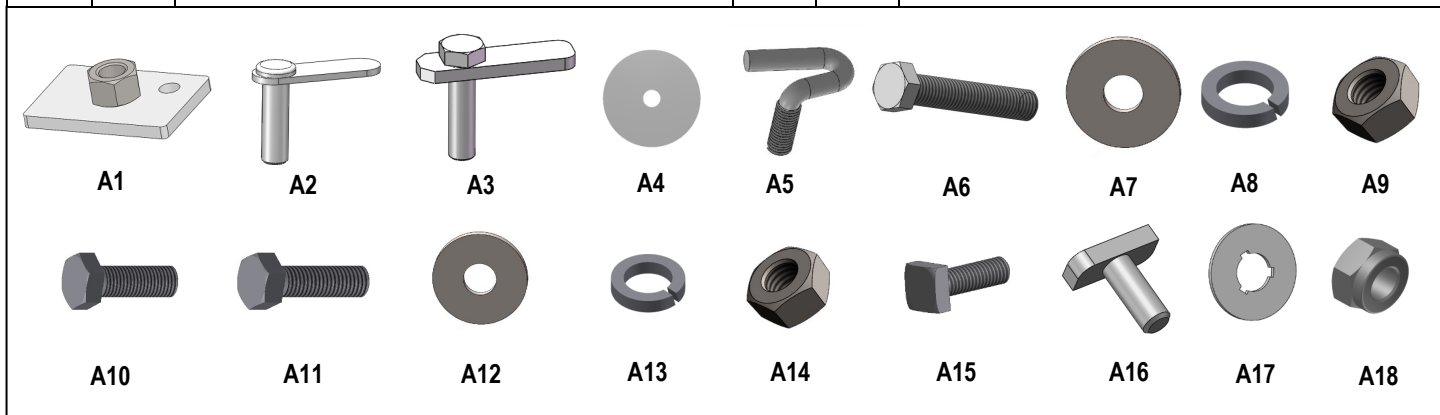
Torque Value

Fastener Size	Tightening Torque (ft-lbs)	Required
6mm	6-7	√
8mm	16-18	√
10mm	31-32	X
12mm	56-58	X
14mm	92-94	X

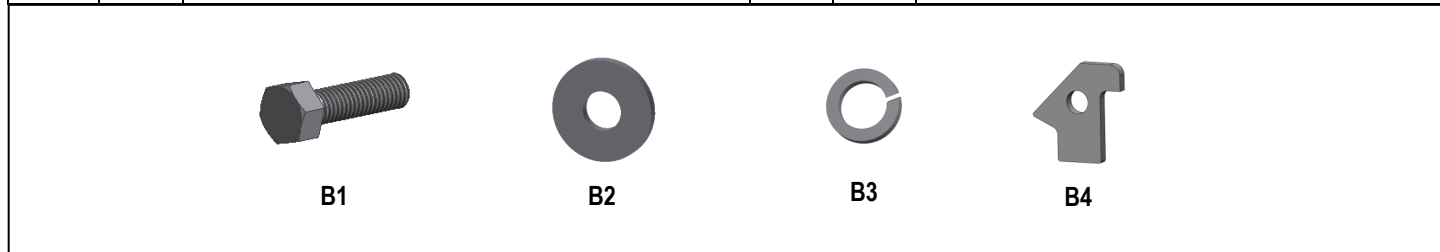
Mounting Bracket List							
Item	QTY	Bracket Label	Description	Item	QTY	Bracket Label	Description
1#	1	DFM	Mounting Bracket for Driver Front	7#	1	PFM	Mounting Bracket for Passenger Front
2#	1	DCM	Mounting Bracket for Driver Center	8#	1	PCM	Mounting Bracket for Passenger Center
3#	1	DRM	Mounting Bracket for Driver Rear	9#	1	PRM	Mounting Bracket for Passenger Rear
4#	2	DFS	Support Bracket for Driver Front/ Rear	10#	2	PFS	Support Bracket for Passenger Front/ Rear
5#	1	DCS	Support Bracket for Driver Center	11#	1	PCS	Support Bracket for Passenger Center
6#	1	DRS	Support Bracket for Driver Rear	12#	1	PRS	Support Bracket for Passenger Rear



Hardware Package A (For Brackets & Bars Installation)					
Item	QTY	Description	Item	QTY	Description
A1	2	Support Plates	A10	2	M8X1.25-25 Hex Bolts
A2	2	M10X35 Bolt Plates	A11	2	M8X1.25-30 Hex Bolts
A3	2	M10X40 Bolt Plates	A12	28	M8 Large Flat Washers
A4	4	M10 Plastic Washers	A13	8	M8 Lock Washers
A5	8	M10 J-Bolts	A14	8	M8 Hex Nuts
A6	2	M10X60mm Hex Bolts	A15	2	M8X1-20 Square Head Bolts
A7	14	M10 Large Flat Washers	A16	10	M8X1.25-20 T-Bolts
A8	14	M10 Lock Washers	A17	10	M8 Plastic Washers
A9	14	M10 Hex Nuts	A18	12	M8 Nylon Lock Nuts



Hardware Package B (For Step Pedals Installation)					
Item	QTY	Description	Item	QTY	Description
B1	24	M8X1.25-30 Hex Bolts	B3	24	M8 Lock Washers
B2	16	M8 Large Flat Washers	B4	8	Spacers

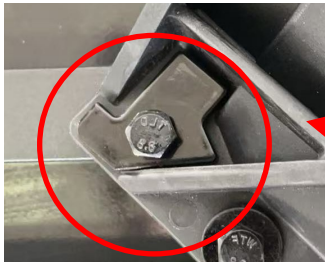
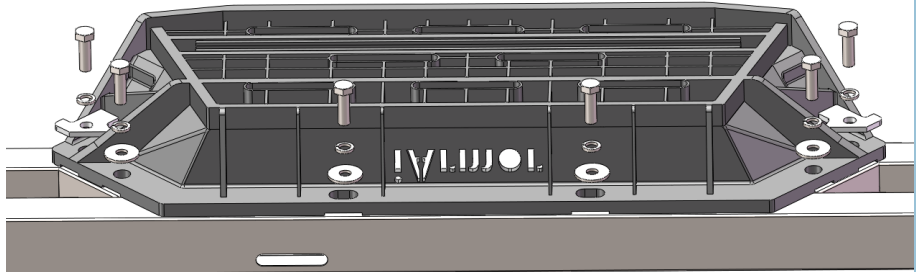


STEP 1: Step Bars Assembly

Assemble (4) Pedals onto the (2) step bars (Two pedals for one step bar) by using:

- (24) B1 (M8X1.25-30mm Hex Bolts),
- (16) B2 (M8 Large Flat Washers)
- (24) B3 (M8 Lock Washers)
- (8) B4 (Spacers)

IMPORTANT: Never use metal hammers on the pedal during installation this will cause damage!

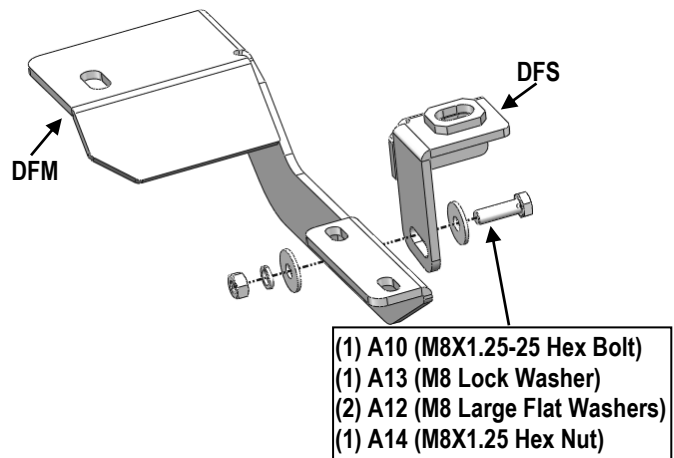


STEP 2: Assemble Driver Side Mounting Brackets

(1) Assemble Driver Front Mounting Bracket (DFM+DFS) (Fig 1) with:

- (1) A10 (M8X1.25-25 Hex Bolt)
- (1) A13 (M8 Lock Washer)
- (2) A12 (M8 Large Flat Washers)
- (1) A14 (M8X1.25 Hex Nut)

Note: Do not fully tighten hardware at this time.

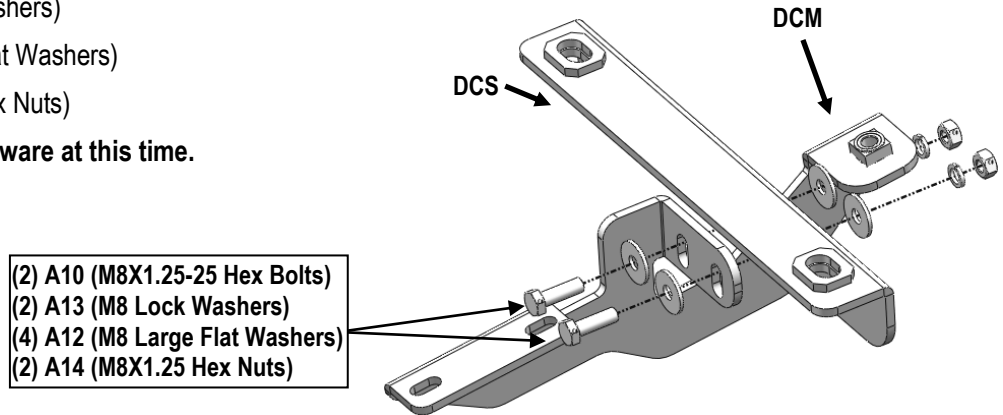


(Fig 1) Driver Front Mounting Bracket Assembly (DFM+DFS)

(2) Assemble Driver Center Mounting Bracket (DCM+DCS) (Fig 2) with:

- (2) A10 (M8X1.25-25 Hex Bolts)
- (2) A13 (M8 Lock Washers)
- (4) A12 (M8 Large Flat Washers)
- (2) A14 (M8X1.25 Hex Nuts)

Note: Do not fully tighten hardware at this time.

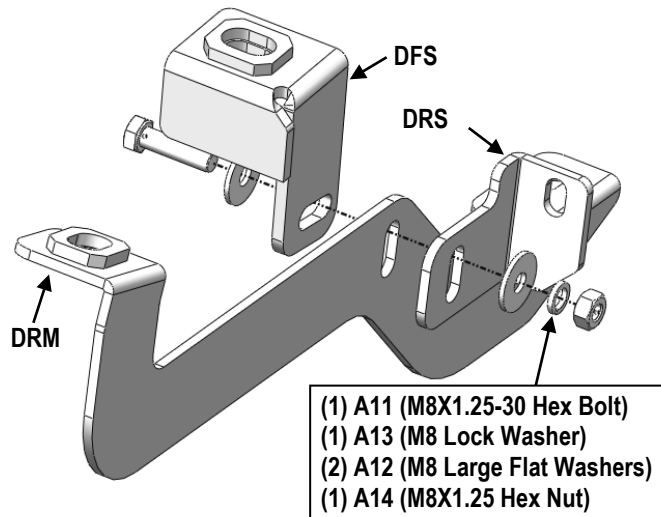


(Fig 2) Driver Center Mounting Bracket Assembly (DCM+DCS)

(3) Assemble Driver Rear Mounting Bracket (DRM+DRS+DFS) (Fig 3) with:

- (1) A11 (M8X1.25-30 Hex Bolt)
- (1) A13 (M8 Lock Washer)
- (2) A12 (M8 Large Flat Washers)
- (1) A14 (M8X1.25 Hex Nut)

Note: Do not fully tighten hardware at this time.



(Fig 3) Driver Rear Mounting Bracket Assembly (DRM+DRS+DFS)

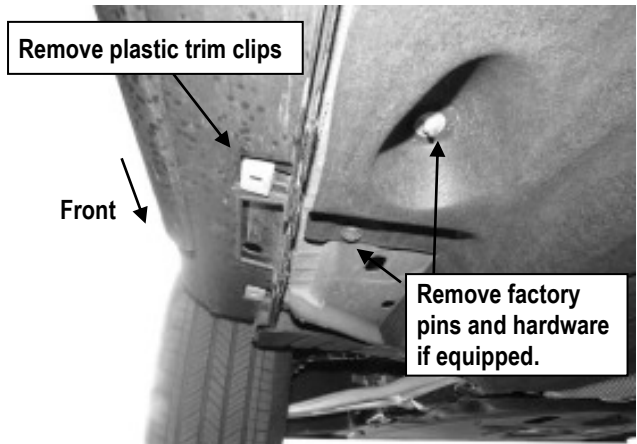
STEP 3: Locate Driver Side Mounting Locations

Start the installation from Driver Side Mounting Locations.

- Remove the large plastic cover on the bottom of the floor panel if equipped, (Fig 4).
- Determine which plastic clips need to be removed. Carefully remove only the plastic clips for installation.



NOTE: Scan the QR code or follow link for M10 J-Bolt installation video.
<https://youtu.be/BqQis3QjZnc>

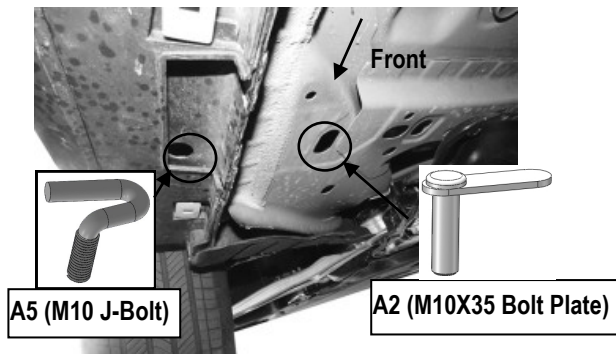


(Fig 4) Driver Side Front Mounting Location

(1) **Locate the Driver Side Front Mounting Location.** (Fig 5).

Insert (1) A2 (M10X35 Bolt Plate) into the slot on the floor panel, (Fig 5). Thread (1) A4 (M10 Plastic Washer) onto the Bolt Plate to hold it in place within the bracket installation.

Select (1) A5 (M10 J-Bolt), insert the tail of J-Bolt all the way up into the round hole on the side panel. Rotate and pull the J-Bolt outwards, keep the thread pointing to the ground, (Fig 6).



(Fig 5) Driver Side Front Mounting Location



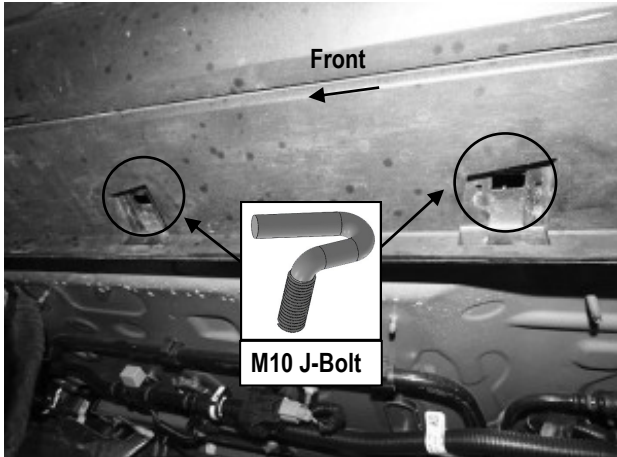
(Fig 6) A5 (M10 J-Bolt) Installation (On Driver Side Mounting Location)

(2) Locate the Driver Side Center Mounting Location. (Fig 7).

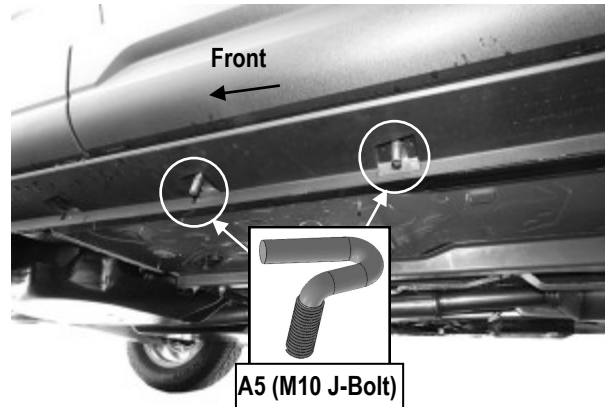
Select (2) A5 (M10 J-Bolt), insert the tail of J-Bolt all the way up into the round hole on the side panel. Rotate and pull the J-Bolt outwards, keep the thread pointing to the ground, (Fig 8).



NOTE: Scan the QR code or follow link for M10 J-Bolt installation video.
<https://youtu.be/BqQis3QjZNc>



(Fig 7) Driver Side Center Mounting Location



(Fig 8) M10 J-Bolts Installation
 (On Driver Side Center Mounting Location)

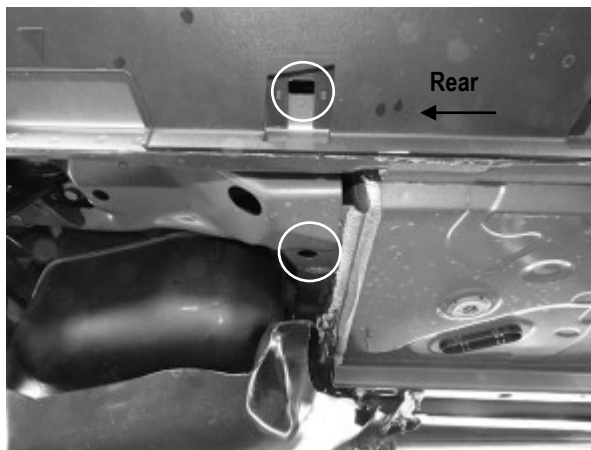
(3) Locate the Driver Side Rear Mounting Location. (Fig 9).

Remove the Factory Cover if equipped;

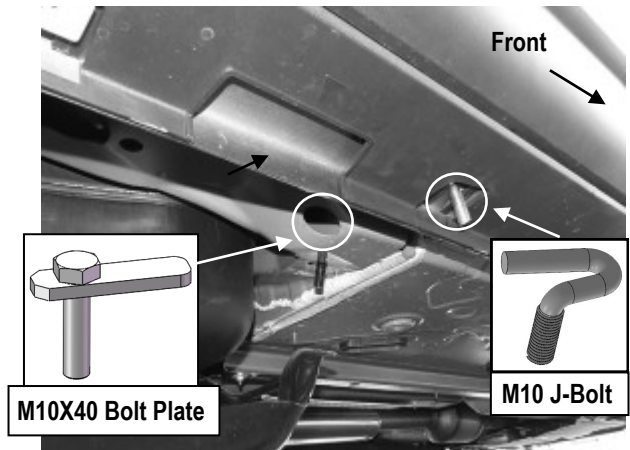
- Insert (1) A2 (M10X35 Bolt Plate) into the slot on the floor panel, (Fig 9). Thread (1) A4 (M10 Plastic Washer) onto the Bolt Plate to hold it in place within the bracket installation.
- Select (1) A5 (M10 J-Bolt), insert the tail of J-Bolt all the way up into the round hole on the side panel. Rotate and pull the J-Bolt outwards, keep the thread pointing to the ground, (Fig 10).



NOTE: Scan the QR code or follow link for M10 J-Bolt installation video.
<https://youtu.be/BqQis3QjZNc>



(Fig 9) Driver Side Rear Mounting Location



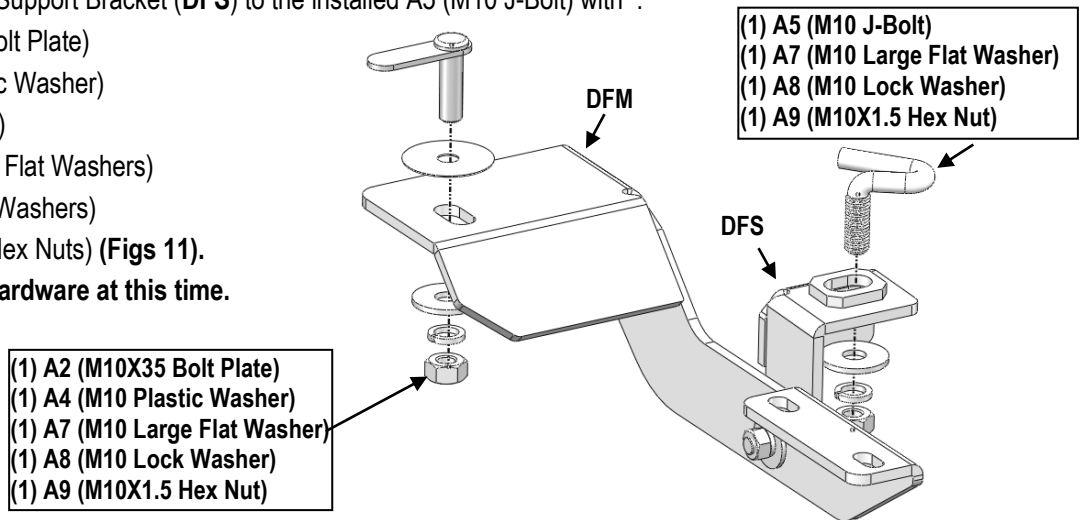
(Fig 10) Install (1) M10 J-Bolt And (1) M10X40 Bolt Plate

STEP 4: Install Driver Side Mounting Brackets

(1) On Driver Side Front Mounting Location. Attach the assembled Mounting Bracket to the installed A2 (M10X35 Bolt Plate), and Secure the Drive Front Support Bracket (DFS) to the installed A5 (M10 J-Bolt) with :

- (1) A2 (M10X35 Bolt Plate)
- (1) A4 (M10 Plastic Washer)
- (1) A5 (M10 J-Bolt)
- (2) A7 (M10 Large Flat Washers)
- (2) A8 (M10 Lock Washers)
- (2) A9 (M10X1.5 Hex Nuts) (Figs 11).

Note: Do not fully tighten hardware at this time.



(Fig 11) Driver Front Mounting Bracket Installation

(2) On Driver Side Center Mounting Location. Attach the Assembled Driver Center Mounting Bracket to the (2) installed A5 (M10 J-Bolt) (Figs 12) with :

- (2) A5 (M10 J-Bolts)
- (2) A7 (M10 Large Flat Washers)
- (2) A8 (M10 Lock Washers)
- (2) A9 (M10X1.5 Hex Nuts) .



NOTE: Scan the QR code or follow link for Support Plate installation.

<https://www.youtube.com/watch?v=R51s7Vk1Sy4>

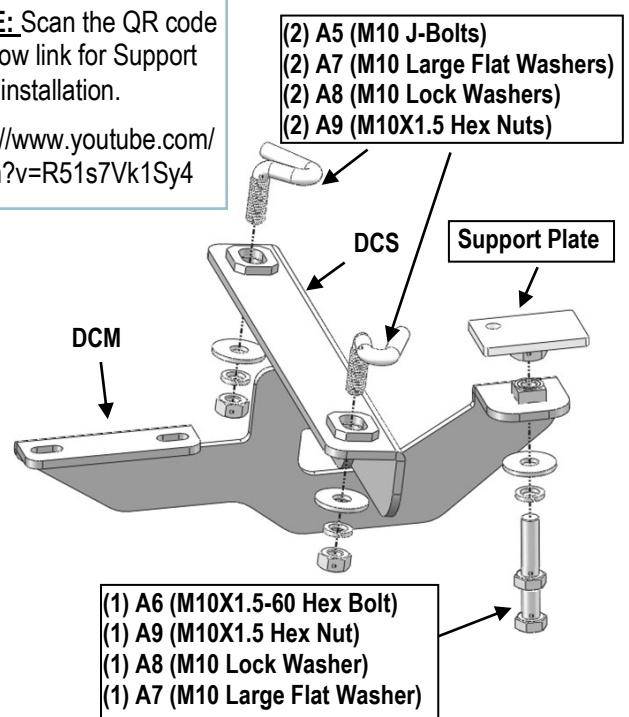
Select and install (1) A1 (Support Plate) (Fig 12):

a. Thread (1) A9 (M10X1.5 Hex Nut) to (1) A6 (M10X1.5-60mm Hex Bolt). Slide (1) A8 (M10 Lock Washer) and (1) A7 (M10 Flat washer) onto the A6 (M10X1.5-60mm Hex Bolt). (**NOTE:** Use the A9 (M10X1.5 Hex Nut) to adjust the level of the Mounting Bracket.)

b. Thread the A6 (M10X1.5-60mm Hex Bolt) assembly into the welded nut on the back of the Mounting Bracket. Place the A1 (Support Plate) onto the end of the A6 (M10 Hex Bolt), (Fig 12).

c. Tighten Hex Bolt to press the Support Plate onto the floor panel. Do not tighten Hex Bolt all the way.

Note: Do not fully tighten hardware at this time.

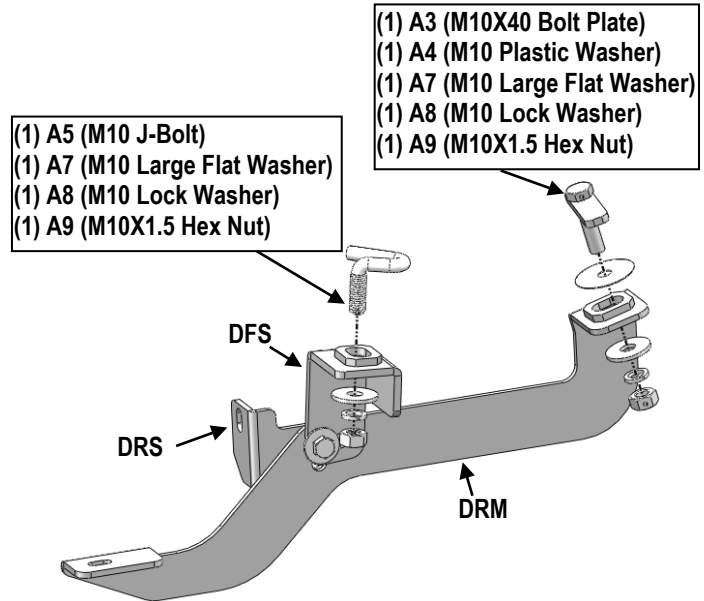


(Fig 12) Driver Center Brackets Installation

(3) On Driver Side Rear Mounting Location. Attach the Assembled Driver Rear Mounting Bracket to the installed A3 (M10X40 Bolt Plate) ,and Secure the Drive Front Support Bracket (DFS) to the installed A5 (M10 J-Bolt) with :

- (1) A3 (M10X40 Bolt Plate)
- (1) A4 (M10 Plastic Washer)
- (1) A5 (M10 J-Bolt)
- (2) A7 (M10 Large Flat Washers)
- (2) A8 (M10 Lock Washers)
- (2) A9 (M10X1.5 Hex Nuts) (Figs 13).

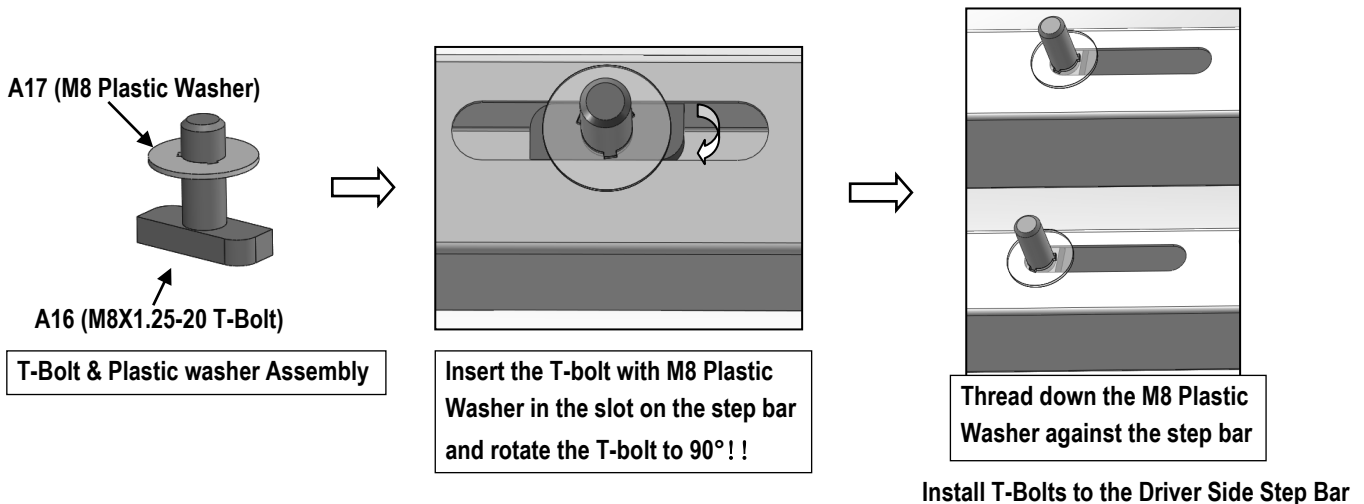
Note: Do not fully tighten hardware at this time.



(Fig 13) Driver Rear Mounting Bracket Installation

STEP 5: Install T-Bolts to the Driver Step Bar

- Assemble (5) A16 (M8X1.25-20 T-Bolts) and (5) A17 (M8 Plastic Washers)
- Install the (5) A16 (M8X1.25-20 T-Bolts) with plastic washers in the slots on the assembled Driver side step bar.
- Rotate the T-Bolts to 90 degree, thread down the M8 Plastic Washers against the step bar.



STEP 6: Driver Side Step Bar Installation

(1) Attach the Assembled Driver Side Step Bar onto the Installed Front & Center Mounting Brackets (Fig 14) with:

- (4) A17 (M8 Plastic Washers)
- (4) A16 (M8X1.25-20 T-Bolts)
- (4) A12 (M8 Large Flat Washers)
- (4) A18 (M8 Nylon Lock Nuts)

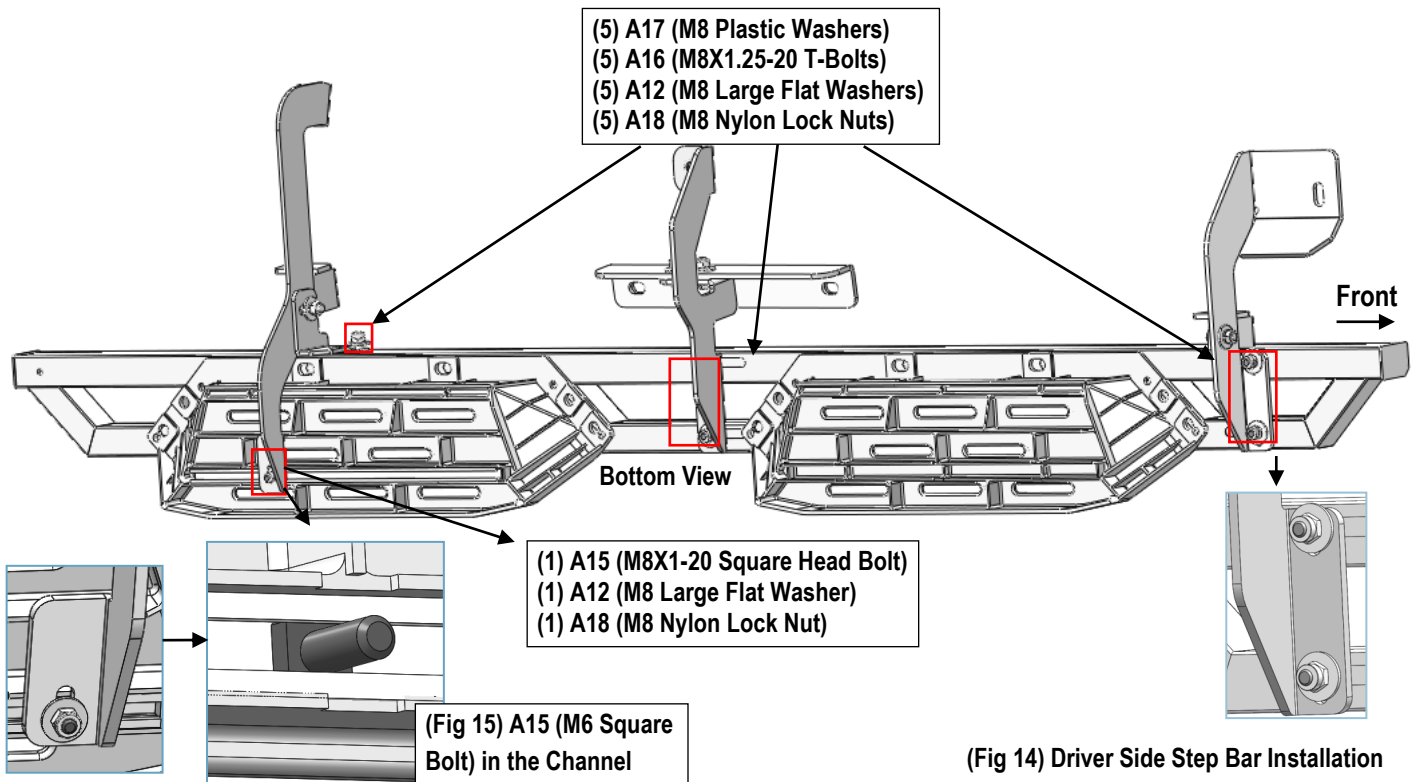
(2) Attach the Step bar to the Driver Rear Mounting Bracket:

- The Rear mounting bracket is located under the rear pedal.
- Slide (1) A15 (M8X1.25-20 Square Head Bolt) into the channel at the bottom of the pedal (Fig 15) .
- And the secure the Driver Rear Mounting Bracket to the bottom of the pedal with:
 - *. (1) A12 (M8 Large Flat Washer)
 - *. (1) A18 (M8 Nylon Lock Nut)

(3) Secure the Driver Rear Support Bracket (DCS) to the slot on back side of the step bar with:

- (1) A17 (M8 Plastic Washer)
- (1) A16 (M8X1.25-20 T-Bolt)
- (1) A12 (M8 Large Flat Washer)
- (1) A18 (M8 Nylon Lock Nut)

Note: Do not fully tighten at this time.



STEP 7: Driver Side Step Bar Adjustment

- Level and adjust the assembled Step Bar properly.
- Tighten all 6mm hardware with 6-7 ft-lbs torque: all 8mm hardware with 16-18 ft-lbs torque.

STEP 8: The Other Side Step Bar Installation

Move to the other side of the vehicle. Repeat **Steps 2-7** for the other side step bar installation.

Attention

- Do periodic inspections to the installation to make sure that all hardware is secure and tight.
- In order to protect your bars/boards, please use mild soap/non-abrasive products for cleaning only.